



JEFFERSON ELEMENTARY SCHOOL ACTION PLAN

OSHKOSH SAFE ROUTES TO SCHOOL PROGRAM



920.424.0165 | 244 W. 11th Avenue | Oshkosh, WI 54902 | EastCentralSRTS.org

SAFE ROUTES TO SCHOOL (SRTS) BACKGROUND INFORMATION

The purpose of the SRTS program is to provide safe pedestrian and bicycle facilities that encourage healthier lifestyles. Programs can be established to educate students, parents, and the community on the benefits of walking and bicycling to school and provide tips to do so safely. Major SRTS goals are:

1. To enable and encourage children, including those with disabilities, to walk and bike to school.
2. To make bicycling and walking to school a safer and more appealing transportation alternative, thereby encouraging a healthy and active lifestyle from an early age.
3. To facilitate the planning, development, and implementation of projects and activities that will improve safety and reduce traffic, fuel consumption, and air pollution in the vicinity of schools.

SRTS Planning efforts assess the facilities and conditions near school, examine how students are currently traveling to/from school, and identify safety concerns/issues raised by parents and the community. Infrastructure and non-infrastructure recommendations are then created and implemented, sometimes with grant funding assistance, by the SRTS Task Force and other community members. SRTS Plans focus on projects within two miles of an elementary or middle school (Kindergarten-8th grade) and address the 5 E's:

Engineering Enforcement Education Encouragement Evaluation

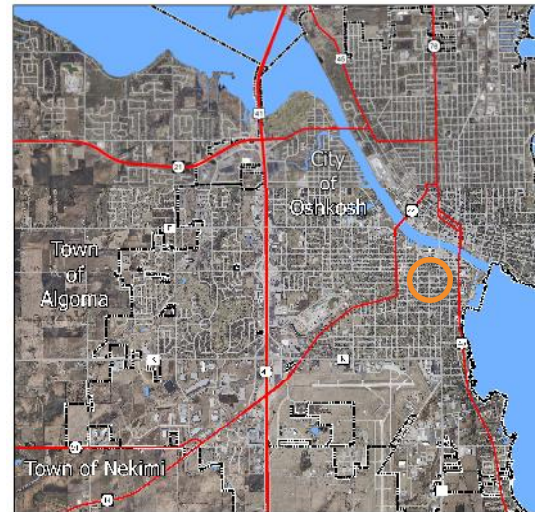
JEFFERSON ELEMENTARY BACKGROUND INFORMATION

Jefferson Elementary School is a neighborhood school located on the corner of W. 10th Ave. and Minnesota St. in the City of Oshkosh. Walking or biking is the most common form of transportation students use getting to and from school with 53 percent of students reporting using one of those two methods. A family vehicle is the next highest mode of transportation for students traveling to and from school at 35 percent. The biggest reason parents do not allow their children to walk or bike is weather/climate and the next two highest reasons are traffic/intersection related. The school is located only one block off of W. Ninth Ave. and Oregon St. which are both minor arterial streets with 2010 daily traffic counts of 6400 and 10100 respectively. Crossing guards are located at the intersections of W. 9th Ave. & Minnesota St. and at W. 11th Ave & Oregon St. helping to provide a safe crossing for students walking or biking.



SCHOOL DEMOGRAPHICS

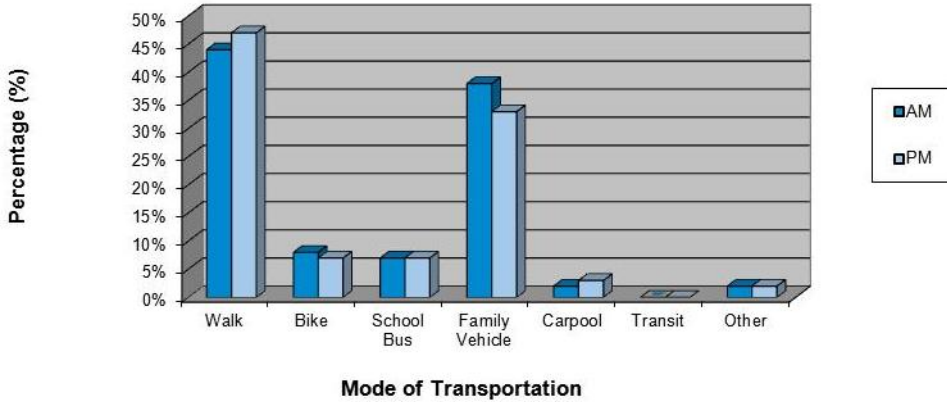
Enrollment:	158 students
Grades:	K - 5
Principal:	Julie Skelton
Start Time:	8:05 a.m.
End Time:	2:45 p.m.
Task Force Rep.:	Julie Skelton Ann Rumbuc



SRTS & School Background Info.....	1
Survey Results & Background Info.....	2
Bike & Walk Audit Results.....	3
Recommendations: The 5 E's.....	4

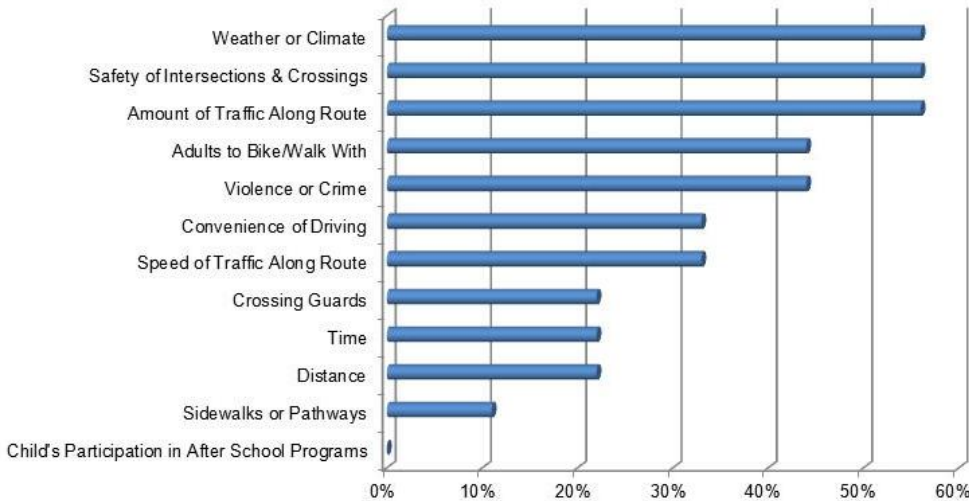
PARENT & STUDENT SURVEY RESULTS

**Jefferson Elementary School Student Survey Results
Morning and Afternoon Comparison**



Survey Data Collected in Spring 2010

**Jefferson Elementary School
Parent Concerns of Children That Do Not Walk or Bike to School**



Survey Data Collected in Spring 2010

DRAFT

Background Information

The City of Oshkosh has an excellent sidewalk network, but many schools also have arterial and/or collector streets nearby that can create barriers to pedestrian/bicycle traffic (i.e. W. 9th Ave. and Oregon St.). Here, safe intersections and crossings are crucial. Several other non-motorized transportation facilities are also found throughout the city, including:

- WIOUWASH Trail
- Trails within Menominee Park and South Park
- Trail located north of Carl Traeger ES & MS

WORK IN PROGRESS

The Oshkosh SRTS program originated from a group of individuals from the school district and the City of Oshkosh that began meeting to address safety issues after a student was struck and injured by a vehicle in 2005. The group has been meeting since that time to address bike/pedestrian safety concerns at and around schools and to encourage more students to walk or bike to school safely. The committee also worked to develop a city-wide SRTS Plan which was completed in 2008. In 2010, the City of Oshkosh was awarded a SRTS Grant. Along with encouragement, educational, and enforcement activities, grant funding will result in the installation of a set of Speed Boards and Rectangular Rapid Flashing Beacons on W. 9th Ave. near Jefferson ES. The City of Oshkosh is also in the process of updating its Pedestrian and Bicycle Circulation Plan. When construction on the US Highway 41 project is complete, there will be a multi-use trail along the causeway over Lake Butte des Morts.



Oshkosh Bike Rodeo - May 2011



Oshkosh Bike Rodeo - May 2011



JEFFERSON ELEMENTARY SCHOOL BIKE/WALK AUDIT RESULTS

DRAFT

Source: Aerial photography Winnebago County, 2008. ECWRPC provided the school location and bike and walk audit results.

Audit Conducted
10.5.2010 - P.M.

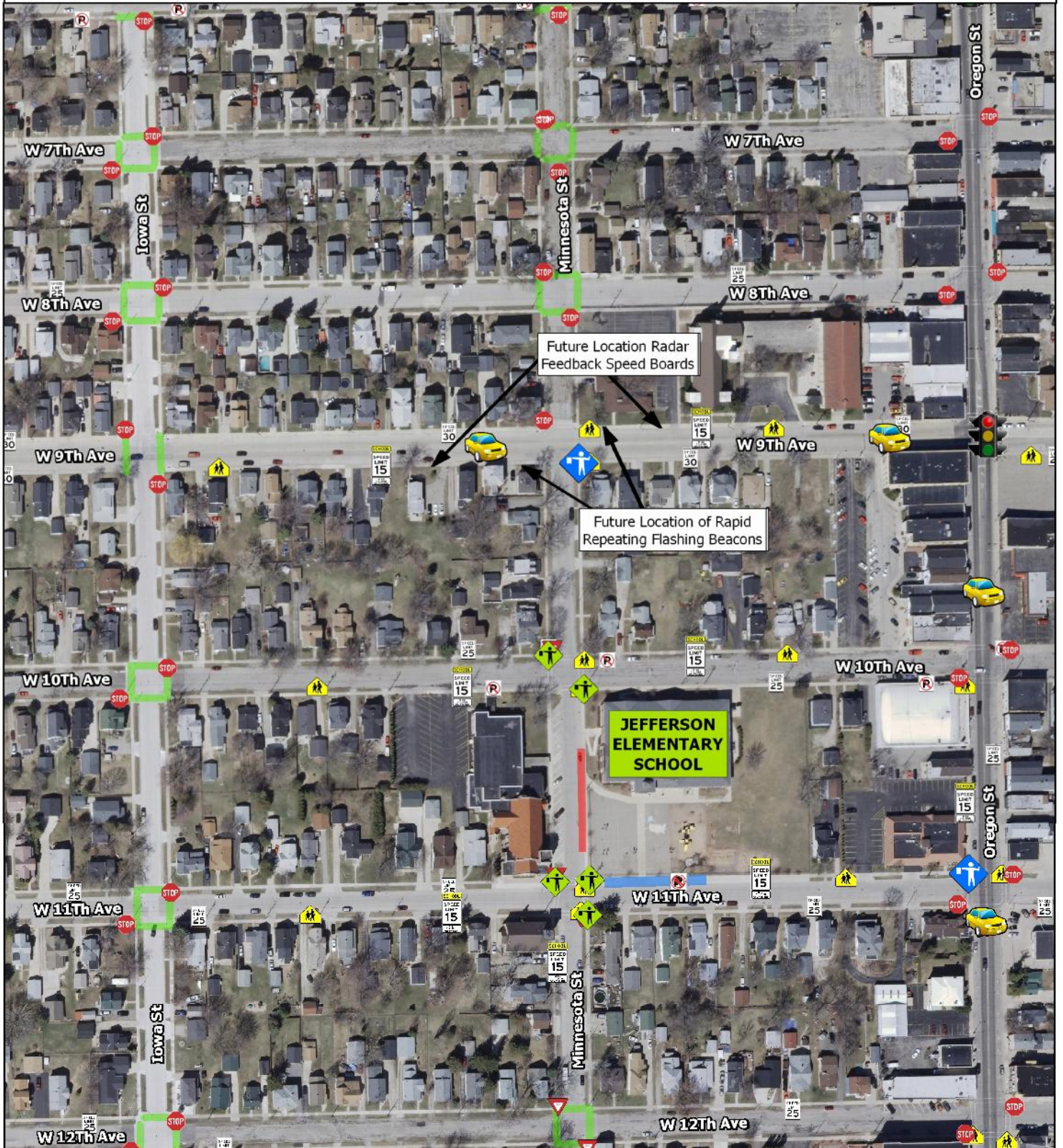


This data was created for use by the East Central Wisconsin Regional Planning Commission Geographic Information System. Any other use/application of this information is the responsibility of the user and such use/application is at their own risk. East Central Wisconsin Regional Planning Commission disclaims all liability regarding fitness of the information for any use other than for East Central Wisconsin Regional Planning Commission business.

Prepared By
EAST CENTRAL WISCONSIN
REGIONAL PLANNING COMMISSION-SEPTEMBER 2011



-  Excessive Traffic Volume & Speed
-  Bus Loading Area
-  Crossing Guard
-  Area Used by Most Parents Picking-Up Students
-  Student Safety Patrol
-  Crosswalk Not Marked



RECOMMENDATIONS

~ Engineering ~

- Installation of Rapid Repeating Flashing Beacons and Speed Boards on W. 9th Ave.
- Ladder style crosswalks at designated intersections
- Curb extensions at 11th Ave. and Minnesota Ave. and at 10th Ave. and Minnesota Ave.
- Change angled parking at the church to back in only
- Signage for designated bus and parent parking
- No parking on the south side of 11th Ave. (potential future bike lane)
- Have the PTO form a "Dad's Club" - The "Dad's Club" could make signs or help with the construction of a project.

~ Enforcement ~

- **Speed Zone Campaign** - Continue to participate in the Speed Zone Campaign in the fall and spring of each school year.
- **Implement Increased Enforcement from SRTS Grant Funds**
- **Student Safety Patrol Program**
- **Crossing Guards**
- **Enforce No Parking Areas** - Work with the Oshkosh PD to enforce No Parking Areas.
- **Corner Captains** - Have adults spaced at equal intervals along a designated route to make sure that children who are walking to or from school get there safely.

~ Education ~

- **Pick-up & Drop-off Procedures** - Educate parents and the community on the pick-up and drop-off procedures at and around the school.
- **Bicycle/Pedestrian Safety Speakers**
- **Parent Pledge Program** - Continue participating in the Regional SRTS Parent Pledge Program.
- **Math Class** - Have students do statistics on the student and parent survey results.
- **Art Class** - Have a poster contest regarding bike safety or have students create signs that say no parking or idling. Then have the "Dad's Club" create the signs with the winning poster.
- **Public Service Announcements (PSA)** - Create PSAs with the local radio station to address pedestrian/bicycling issues and seasonal issues.

~ Encouragement ~

- **Bike Rodeo** - Continue hosting annual Bike Rodeo
- **Participate in Walk/Bike to School Day Events**
- **Walking Wednesday Program**
- **Themed Walk to School Days**
- **Walk to Win Program**
- **Competitions** - Have competitions between schools to see who can walk the most miles
- **Mileage Punch Card Program** - Have principals or faculty members stand at a particular spot on different days and punch cards. On days of bad weather (i.e. rain or snow) students may receive double punches. Reward students with toe tokens or prizes donated by the community.
- **Recess Rovers/Morning Mile**
- **Walking School Bus Program** - Students who are walking to school meet at a designated location and all walk together to school.

DRAFT

~ Evaluation ~

- **Student and Parent Surveys** - Conduct periodic parent and student surveys in conjunction with the Regional SRTS Program.
- **Bike/Walk Audits** - Continue annual audits to assess safety concerns at and around the school.
- **Geography Class** - Have students put a push pin on a map where they live and color code the push pin to match the mode of transportation the use to get to and from school.

EXAMPLES

curb extensions



ladder style crosswalk

The intersection improvements shown above help shorten the crossing distance, reduce traffic speeds, and increase drivers' awareness of pedestrians. These could be used to improve safety at intersections near Jefferson ES.



East Central Wisconsin Regional
Planning Commission
400 Ahnaip Street, Suite 100
Menasha, WI 54952
920.751.4770
www.eastcentralsrts.org