



SMITH ELEMENTARY SCHOOL ACTION PLAN

OSHKOSH SAFE ROUTES TO SCHOOL PROGRAM



920.424.0174 | 1745 Oregon Street | Oshkosh, WI 54902 | EastCentralSRTS.org

SAFE ROUTES TO SCHOOL (SRTS) BACKGROUND INFORMATION

The purpose of the SRTS program is to provide safe pedestrian and bicycle facilities that encourage healthier lifestyles. Programs can be established to educate students, parents, and the community on the benefits of walking and bicycling to school and provide tips to do so safely. Major SRTS goals are:

1. To enable and encourage children, including those with disabilities, to walk and bike to school.
2. To make bicycling and walking to school a safer and more appealing transportation alternative, thereby encouraging a healthy and active lifestyle from an early age.
3. To facilitate the planning, development, and implementation of projects and activities that will improve safety and reduce traffic, fuel consumption, and air pollution in the vicinity of schools.

SRTS Planning efforts assess the facilities and conditions near school, examine how students are currently traveling to/from school, and identify safety concerns/issues raised by parents and the community. Infrastructure and non-infrastructure recommendations are then created and implemented, sometimes with grant funding assistance, by the SRTS Task Force and other community members. SRTS Plans focus on projects within two miles of an elementary or middle school (Kindergarten-8th grade) and address the 5 E's:

Engineering Enforcement Education Encouragement Evaluation

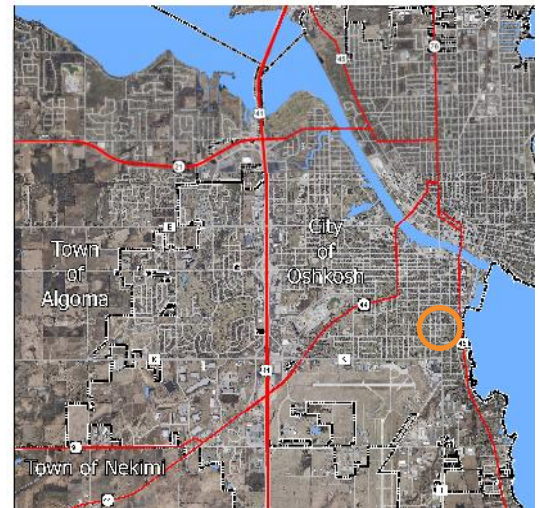
SMITH ELEMENTARY BACKGROUND INFORMATION

Smith Elementary School is a neighborhood school located on the corner of Oregon St. and W. 18th Ave. Over half of students, 55 percent, travel to and from school in a family vehicle while 36 percent reported walking or biking to school. The biggest reason parents do not allow their children to walk or bike is weather/climate and the next two highest reasons are traffic/intersection related. Oregon St. is a minor arterial street with a 2010 daily traffic count of 6800 vehicles going past the school. South Park Ave. and W. 20th Ave./ County Highway A are in close proximity to the school and are also minor arterials with a 2010 daily traffic count of 6100 and 11300 vehicles respectively. Main St./U.S. Highway 45 runs along Lake Winnebago just east of the school and is a principal arterial roadway with a 2010 daily traffic count of 5700 vehicles. A crossing guard is located at the school which provides a safe crossing on Oregon St. at W. 18th Ave. for students walking and biking.

DRAFT

SCHOOL DEMOGRAPHICS

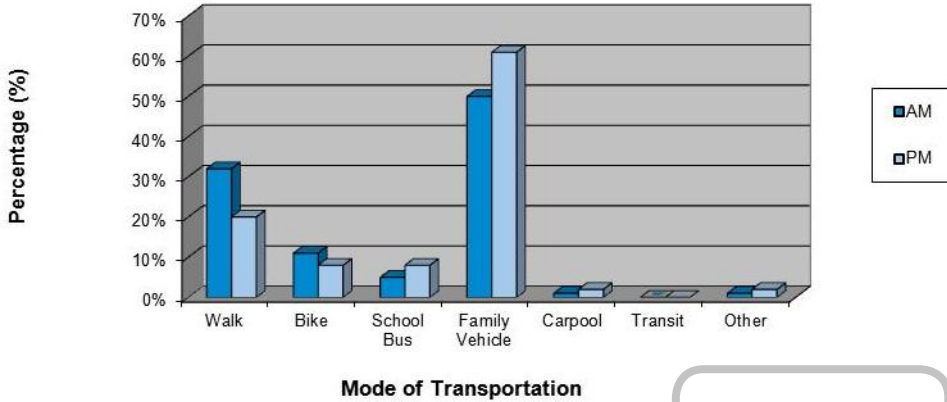
Enrollment:	200 students
Grades:	K - 5
Principal:	Marcie Gundlach
Start Time:	8:05 a.m.
End Time:	2:45 p.m.
Task Force Rep.:	Chris Richards



SRTS Background Information.....	1
Survey Results & Existing Facilities.....	2
Bike & Walk Audit Results.....	3
Recommendations: The 5 E's.....	4

PARENT & STUDENT SURVEY RESULTS

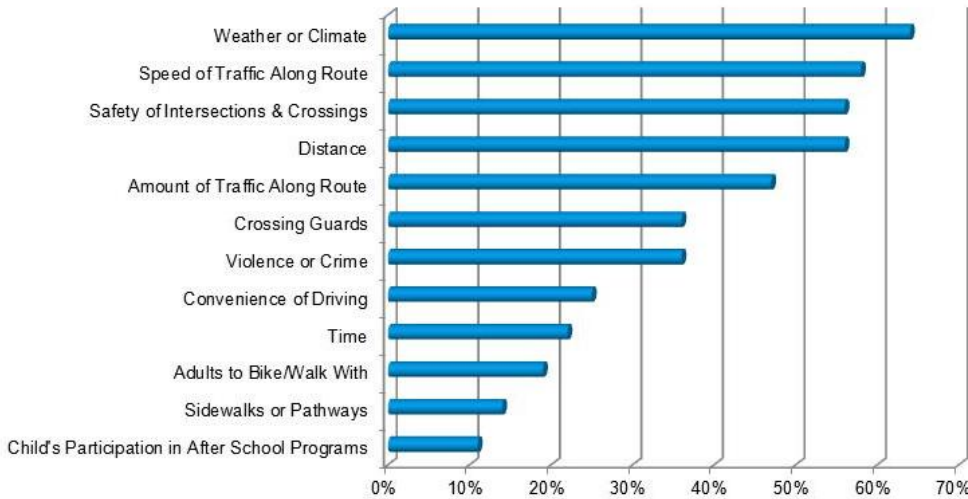
**Smith Elementary School Student Survey Results
Morning and Afternoon Comparison**



Survey Data Collected in Spring 2010

DRAFT

**Smith Elementary School
Parent Concerns of Children That Do Not Walk or Bike to School**



Survey Data Collected in Spring 2010

Background Information

The City of Oshkosh has an excellent sidewalk network, but many schools also have arterial and/or collector streets nearby that can create barriers to pedestrian/bicycle traffic (i.e. W. 9th Ave. and Oregon St.). Here, safe intersections and crossings are crucial. Several other non-motorized transportation facilities are also found throughout the city, including:

- WIOUWASH Trail
- Trails within Menominee Park and South Park
- Trail located north of Carl Traeger ES & MS

WORK IN PROGRESS

The Oshkosh SRTS program originated from a group of individuals from the school district and the City of Oshkosh that began meeting to address safety issues after a student was struck and injured by a vehicle in 2005. The group has been meeting since that time to address bike/pedestrian safety concerns at and around schools and to encourage more students to walk or bike to school safely. The committee also worked to develop a city-wide SRTS Plan which was completed in 2008. In 2010, the City of Oshkosh was awarded a SRTS Grant. Along with encouragement, educational, and enforcement activities, grant funding will result in the installation of six ladder-style crosswalks at three intersections near Smith ES. The City of Oshkosh is also in the process of updating its Pedestrian and Bicycle Circulation Plan. When construction on the US Highway 41 project is complete, there will be a multi-use trail along the causeway over Lake Butte des Morts.



Oshkosh Bike Rodeo - May 2011



Oshkosh Bike Rodeo - May 2011

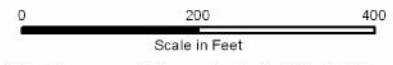


SMITH ELEMENTARY SCHOOL BIKE/WALK AUDIT RESULTS

DRAFT

Source: Aerial photography Winnebago County, 2008.
ECWRPC provided the school location and
bike and walk audit results.

Audit Conducted
10.18.2010 - P.M.

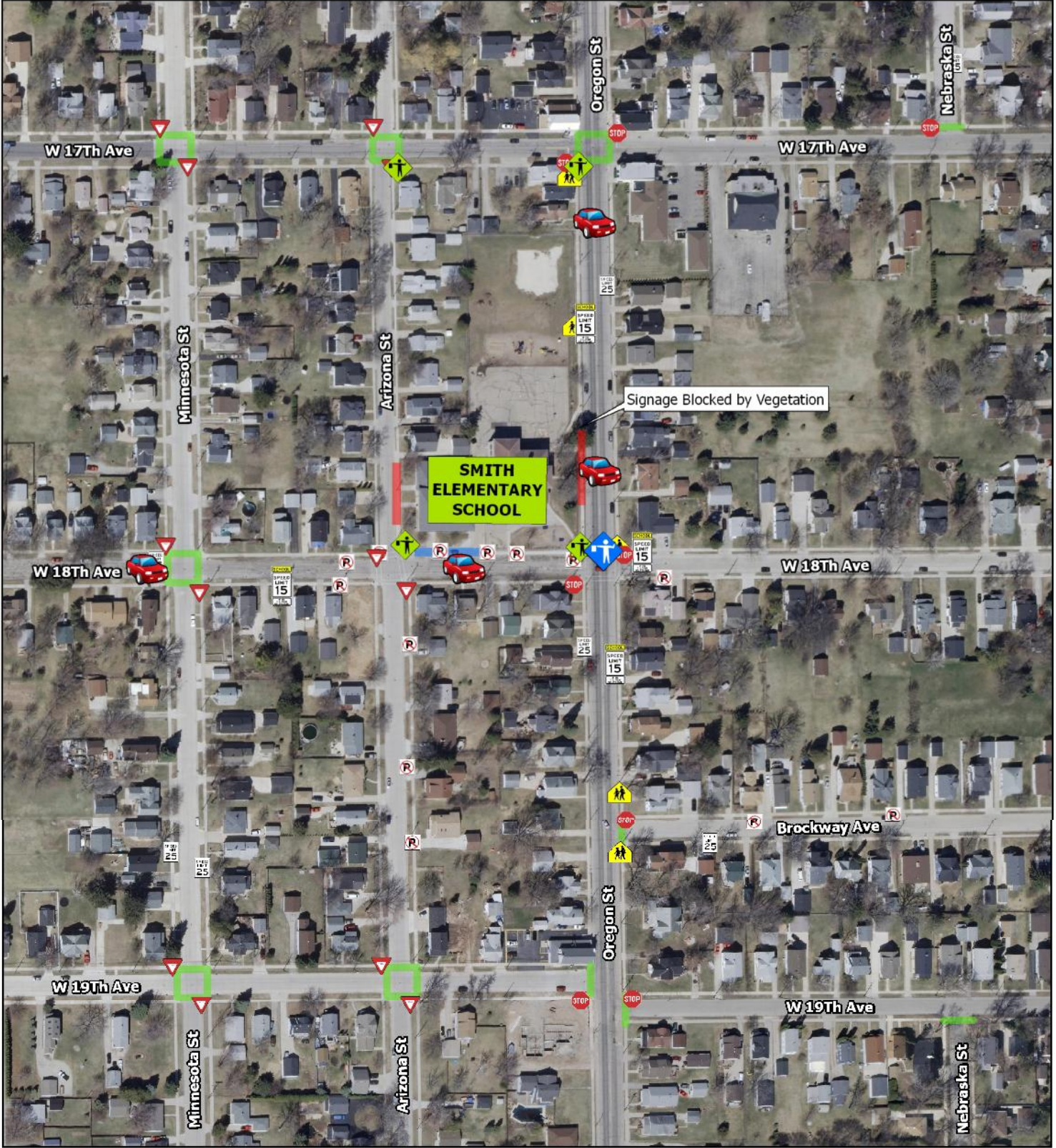


This data was created for use by the East Central Wisconsin Regional Planning Commission Geographic Information System. Any other use/application of this information is the responsibility of the user and such use/application is at their own risk. East Central Wisconsin Regional Planning Commission disclaims all liability regarding fitness of the information for any use other than for East Central Wisconsin Regional Planning Commission business.

Map Prepared By
EAST CENTRAL WISCONSIN
REGIONAL PLANNING COMMISSION-SEPTEMBER 2011



-  Excessive Traffic Speeds
-  Bus Loading Area
-  Crossing Guard
-  Area Used by Most Parents Picking-Up Students
-  Student Safety Patrol
-  Crosswalk Not Marked



RECOMMENDATIONS

~ Engineering ~

- **No parking on the south side of 18th Ave. in front of the school** - Designated parent parking area and signage for this area along with education for the parents on how to use the pick-up and drop-off area.
- **Ladder style crosswalks at designated intersections**
- **Maximize visibility of School Zone signage on Oregon Street** - Periodically trim vegetation.
- **Have the PTO form a "Dad's Club"** - The "Dad's Club" could make signs or help with the construction of a project.

~ Enforcement ~

- **Speed Zone Campaign** - Continue to participate in the Speed Zone Campaign in the fall and spring of each school year.
- **Student Safety Patrol Program**
- **Crossing Guards**
- **Enforce No Parking Areas** - Work with the Oshkosh PD to enforce No Parking Areas.
- **Corner Captains** - Have adults spaced at equal intervals along a designated route to make sure that children who are walking to or from school get there safely.

~ Education ~

- **Pick-up & Drop-off Procedures** - Educate parents and the community on the pick-up and drop-off procedures at and around the school.
- **Parent Pledge Program** - Continue participating in the Regional SRTS Parent Pledge Program.
- **Math Class** - Have students do statistics on the student and parent survey results.
- **Art Class** - Have a poster contest regarding bike safety or have students create signs that say no parking or idling. Then have the "Dad's Club" create the signs with the winning poster.
- **Public Service Announcements (PSA)** - Create PSAs with the local radio station to address pedestrian/bicycling issues and seasonal issues.

~ Encouragement ~

- **Bike Rodeo** - Continue promoting annual Bike Rodeo
- **Participate in Walk/Bike to School Day Events**
- **Walking Wednesday Program**
- **Themed Walk to School Days**
- **Walk to Win Program**
- **Competitions** - Have competitions between schools to see who can walk the most miles
- **Mileage Punch Card Program** - Have principals or faculty members stand at a particular spot on different days and punch cards. On days of bad weather (i.e. rain or snow) students may receive double punches. Reward students with toe tokens or prizes donated by the community.
- **Recess Rovers/Morning Mile**
- **Walking School Bus Program** - Students who are walking to school meet at a designated location and all walk together to school.



~ Evaluation ~

- **Student and Parent Surveys** - Conduct periodic parent and student surveys in conjunction with the Regional SRTS Program.
- **Bike/Walk Audits** - Continue annual audits to assess safety concerns at and around the school.
- **Geography Class** - Have students put a push pin on a map where they live and color code the push pin to match the mode of transportation the use to get to and from school.

EXAMPLES

parking signage near schools



The signage shown above provides specific parking requirements for parents that choose to drive their student to/from school. This can help prevent conflicts between vehicles and pedestrians/bicyclists. Similar signs could be installed near Smith ES to help control traffic.



East Central Wisconsin Regional
Planning Commission
400 Ahnaip Street, Suite 100
Menasha, WI 54952
920.751.4770
www.eastcentralsrts.org