



GREENVILLE ELEMENTARY SCHOOL ACTION PLAN

HORTONVILLE AREA SAFE ROUTES TO SCHOOL PROGRAM



920.757.7160 | W6822 Greenridge Drive | Greenville, WI 54942 | EastCentralSRTS.org

SAFE ROUTES TO SCHOOL BACKGROUND INFORMATION

The purpose of the SRTS program is to provide safe pedestrian and bicycle facilities that encourage healthier lifestyles. Programs can be established to educate students, parents, and the community on the benefits of walking and bicycling to school and provide tips to do so safely. Major SRTS goals are:

1. To enable and encourage children, including those with disabilities, to walk and bike to school.
2. To make bicycling and walking to school a safer and more appealing transportation alternative, thereby encouraging a healthy and active lifestyle from an early age.
3. To facilitate the planning, development, and implementation of projects and activities that will improve safety and reduce traffic, fuel consumption, and air pollution in the vicinity of schools.

SRTS Planning efforts assess the facilities and conditions near school, examine how students are currently traveling to/from school, and identify safety concerns/issues raised by parents and the community. Infrastructure and non-infrastructure recommendations are then created and implemented, sometimes with grant funding assistance, by the SRTS Task Force and other community members. SRTS Plans focus on projects within two miles of an elementary or middle school (Kindergarten-8th grade) and address the 5 E's:

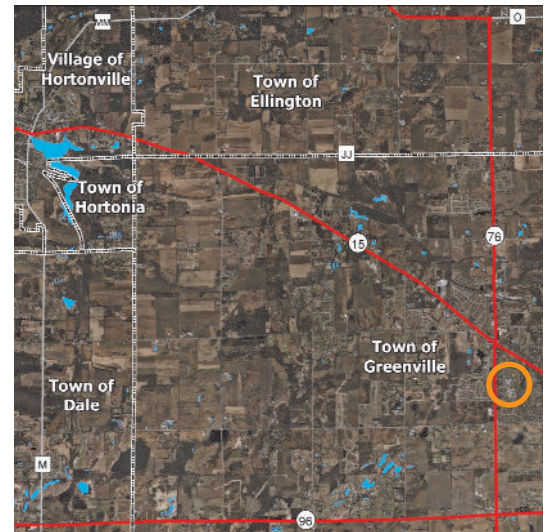
Engineering Enforcement Education Encouragement Evaluation

GREENVILLE ELEMENTARY BACKGROUND INFORMATION

Greenville Elementary School is located in the Town of Greenville on the corner of Greenridge Dr. and Fawn Ridge Dr., just south of Greenville Middle School. The majority of students, approximately 70 percent, travel to and from school via school bus. In comparison, an average of only 6 percent of students travel by foot or bike (even though about 30 percent of students live within one mile of school). For parents of children that do not walk or bike to/from school, their top three concerns deal with the amount of traffic, distance from school, and speed of traffic. In 2010, STH 76 / Municipal Dr. and STH 15 / Greenville Dr. had average daily traffic counts of 6,000 and 15,200 vehicles respectively. These two highways present barriers to walking and biking, but local roads closer to school also pose challenges, especially since many streets do not connect and there are no sidewalks in place. However, the Greenville Elementary/Middle School area is served by two multi-use trails, which provide access to/from other parts of the community.

SCHOOL DEMOGRAPHICS

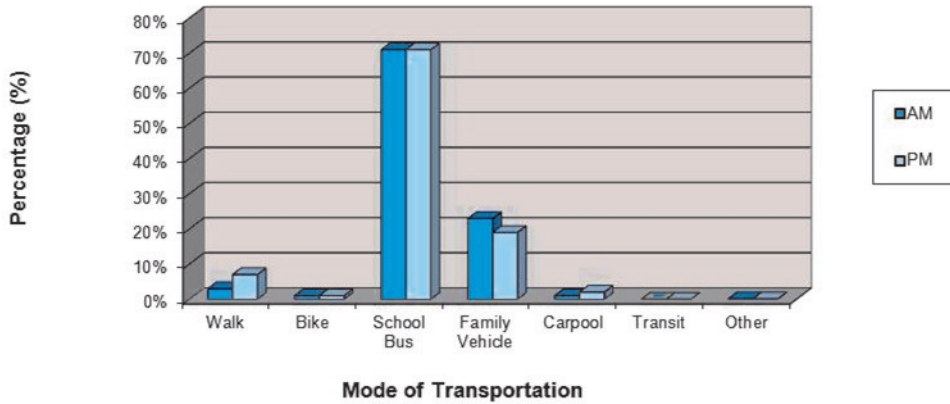
Enrollment:	727 students
Grades:	K - 4
Principal:	Janna Cochrane
Start Time:	8:00 a.m.
End Time:	3:10 p.m.
Task Force Rep.:	Janna Cochrane



SRTS Background Information.....	1
Survey Results & Background Info.....	2
Bike & Walk Audit Results.....	3
Recommendations: The 5 E's.....	4

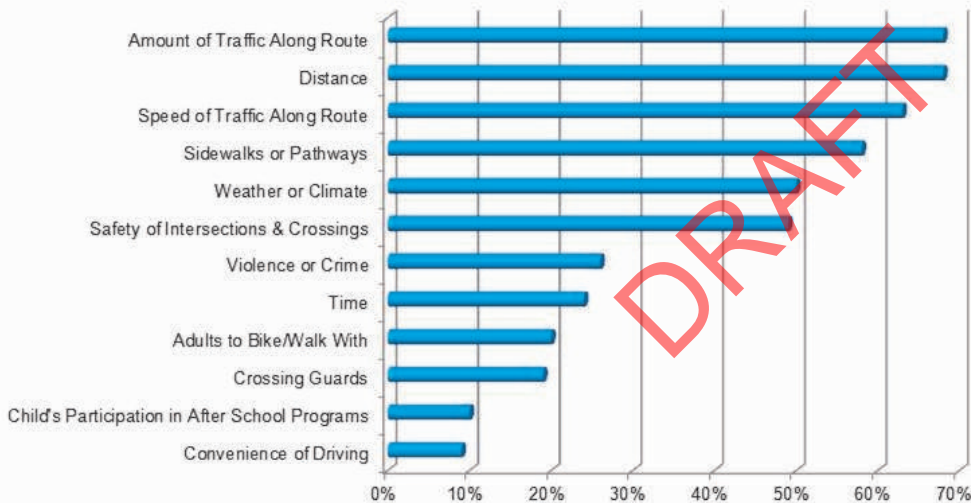
PARENT & STUDENT SURVEY RESULTS

**Greenville Elementary School Student Survey Results
Morning and Afternoon Comparison**



Survey Data Collected in Spring 2010

**Greenville Elementary School
Parent Concerns of Children That Do Not Walk or Bike To School**



Survey Data Collected in Fall 2009

Background Information

The Village of Hortonville and Town of Greenville are growing communities located west of the Fox Cities. Both are divided by one or more state highways – STH 15 & 76. Although two safe tunnel crossings have been built, these high traffic/speed roads still present a “barrier” to walking and biking. Few sidewalks are located in either municipality, except in the central part of Hortonville. Instead, multi-use trails serve as the primary non-motorized transportation facilities, including:

- WIOUWASH State Trail
- STH 76 Trail
- STH 15 Trail
- Lily of the Valley Trail

WORK IN PROGRESS

The Hortonville SRTS Task Force has been meeting regularly since 2009 to address safety concerns and promote walking and biking to school safely. Schools continue to take part SRTS-related activities, including Walk to School Day and Bike Safety Day. In 2010, the Task Force applied for SRTS grant funding to create a trail extension, install signage, increase law enforcement, and add bicycle curriculum. Although these projects were not awarded, they still have merit and can be pursued in the future.



Walking Event in Lions Park - Oct. 2011



Walking Event in Lions Park - Oct. 2011

GREENVILLE ES & MS BIKE/WALK AUDIT RESULTS

Source: Aerial photography and right-of-way data provided by Outagamie County, ?????. ECWRPC provided the school location and bike and walk audit results.

Audit Conducted
??,??,????



This data was created for use by the East Central Wisconsin Regional Planning Commission Geographic Information System. Any other use/application of this information is the responsibility of the user and such use/application is at their own risk. East Central Wisconsin Regional Planning Commission disclaims all liability regarding fitness of the information for any use other than for East Central Wisconsin Regional Planning Commission business.

Map Prepared By
EAST CENTRAL WISCONSIN
REGIONAL PLANNING COMMISSION-NOVEMBER 2011



-  Excessive Traffic Volume & Speed
-  Bike Racks
-  Trail Underpass
-  No Sidewalk
-  Bus Loading Area
-  Area Used by Most Parents Picking-Up Students
-  Multi-Use Trail



EXAMPLES

rapid repeating flashing beacon

pedestrian refuge island



ladder style crosswalk

The street design elements shown above help identify crossings and calm the speed of vehicular traffic. Any or all of these could be used on streets near Greenville ES.



East Central Wisconsin Regional
Planning Commission
400 Ahnaip Street, Suite 100
Menasha, WI 54952
920.751.4770
www.eastcentralsrts.org

SRTS Action Plan prepared by East Central Wisconsin Regional Safe Routes to School Program, April 2012. For additional information, please contact Melissa Kraemer Badtke, Regional SRTS Coordinator, at 920.751.4770 or visit www.eastcentralsrts.org.

RECOMMENDATIONS

~ Engineering ~

- **High Visibility Crosswalks** - Emphasize the recommended path for crossing an intersection.
- **Traffic Calming Measures** - Include traffic calming measures (i.e. pedestrian refuge island, curb bump-outs, etc.) when reconstructing roadways near schools or on routes that students use to walk/bike to school.
- **Bike Racks** - Install additional bike racks near school.
- **Trail Connection** - Create a multi-use trail along Kimberly Ct. to connect the schools to the existing trail network.
- **Safe Crossings** - Explore pedestrian/bicycle friendly traffic solutions for crossing Fawn Ridge Dr. and Greenridge Dr.
- **Multi-Use Trail** - Create an on-campus trail that connects with the existing trail system near Greenville MS.
- **Add Stop Sign at Driveway Exit**
- **Add "No Parking" Signage Near Parking Lot Entrance**
- **Add Solar-Powered Speed Signs on Fawn Ridge Dr. and Greenridge Dr.**

~ Enforcement ~

- **Law Enforcement Presence** - Increase the presence of law enforcement near school during arrival/dismissal times (possible opportunity to partner with the FVTC Law Enforcement Program).
- **Speed Trailers** - Place these at or near schools to show passing motorists the speed at which they are traveling.
- **School Zone Campaign** - First Week: parents and students hold banners to remind drivers to slow down in school zones. Second Week: parent volunteers use radar guns to track drivers who are speeding in school zones and they receive a letter in the mail. Third Week: a law enforcement officer writes citations to speeding drivers.

~ Education ~

- **Parent Pledge Program** - Continue participating in the Regional SRTS Parent Pledge Program.
- **Bike Rodeo/Safety Course** - Coordinate bike rodeos featuring bike safety lessons and tune-ups.
- **Classroom Activities** - Add bicycle/pedestrian safety to the curriculum (i.e. bike education in P.E. class, poster contest in Art class, etc.).
- **Media Campaign** - Create signage and public service announcements (PSAs) focused on pedestrian awareness and safety in school zones
- **Pick-up & Drop-off Procedures** - Educate parents and the community on the pick-up, drop-off, and parking procedures at and around the school.

~ Encouragement ~

- **Frequent Walker Card/Frequent Rider Miles** - Have faculty members check students' punch cards every time they walk/bike to school. Once their card is full, students will receive a reward.
- **Golden Sneaker Award** - A competition between classrooms to have the greatest number of students walking/biking to school.
- **Walking School Bus Program or Cycle Train** - Students meet at a designated location and walk or bike to school together (accompanied by at least one adult).
- **No Idling Policy** - Encourage bus drivers and parents to turn off the engines of their vehicles while waiting for students.

~ Evaluation ~

- **Student and Parent Surveys** - Conduct periodic parent and student surveys in conjunction with the Regional SRTS Program.
- **Geography Class** - Have students put a push pin on a map where they live and color code the push pin to match the mode of transportation the use to get to and from school.
- **Bike/Walk Audits** - Continue annual audits to assess safety concerns at and around the school.