



# OMRO ELEMENTARY SCHOOL ACTION PLAN

## OMRO SAFE ROUTES TO SCHOOL PROGRAM



920.685.3100 | 1000 N. Webster Avenue | Omro, WI 54963 | EastCentralSRTS.org

### SAFE ROUTES TO SCHOOL BACKGROUND INFORMATION

The purpose of the SRTS program is to provide safe pedestrian and bicycle facilities that encourage healthier lifestyles. Programs can be established to educate students, parents, and the community on the benefits of walking and bicycling to school and provide tips to do so safely. Major SRTS goals are:

1. To enable and encourage children, including those with disabilities, to walk and bike to school.
2. To make bicycling and walking to school a safer and more appealing transportation alternative, thereby encouraging a healthy and active lifestyle from an early age.
3. To facilitate the planning, development, and implementation of projects and activities that will improve safety and reduce traffic, fuel consumption, and air pollution in the vicinity of schools.

SRTS Planning efforts assess the facilities and conditions near school, examine how students are currently traveling to/from school, and identify safety concerns/issues raised by parents and the community. Infrastructure and non-infrastructure recommendations are then created and implemented, sometimes with grant funding assistance, by the SRTS Task Force and other community members. SRTS Plans focus on projects within two miles of an elementary or middle school (Kindergarten-8th grade) and address the 5 E's:

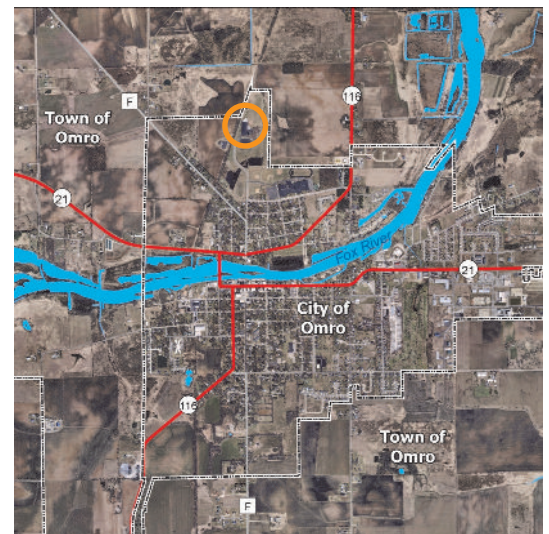
**Engineering Enforcement Education Encouragement Evaluation**

### OMRO ELEMENTARY BACKGROUND INFORMATION

Omro Elementary School is located in the City of Omro on N. Webster Ave., just north of Omro High and Middle Schools. The majority of students, approximately 62 percent, travel to and from school via school bus. In comparison, an average of six percent of students travel by foot or bike (even though about 21 percent of students live within one mile of school). For parents of children that do not walk or bike to/from school, their top three concerns deal with the speed of traffic, amount of traffic, and distance from school. In 2010, average daily traffic counts for streets near school were as follows: STH 21 / W. Main St. – 11,000; STH 116 / W. River Dr. – 4,900; and CTH F / N. Webster Ave. – 1,000 vehicles. Nearly all students wishing to walk or bike to/from school must cross one or more of these heavily-travelled roadways, which can present some challenges.

### SCHOOL DEMOGRAPHICS

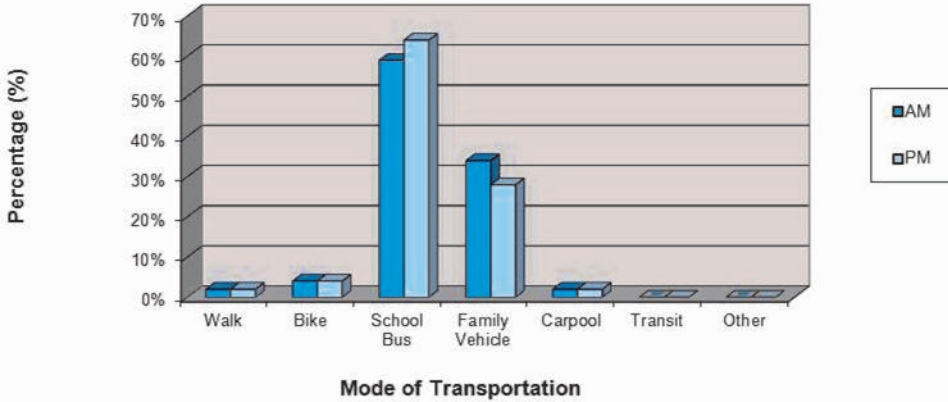
<b>Enrollment:</b>	366 students
<b>Grades:</b>	2 - 5
<b>Principal:</b>	Dave Wellhoefer
<b>Start Time:</b>	7:50 a.m.
<b>End Time:</b>	2:45 p.m.
<b>Task Force Rep.:</b>	Ann Bauer



SRTS Background Information.....	1
Survey Results & Existing Facilities.....	2
Bike & Walk Audit Results.....	3
Recommendations: The 5 E's.....	4

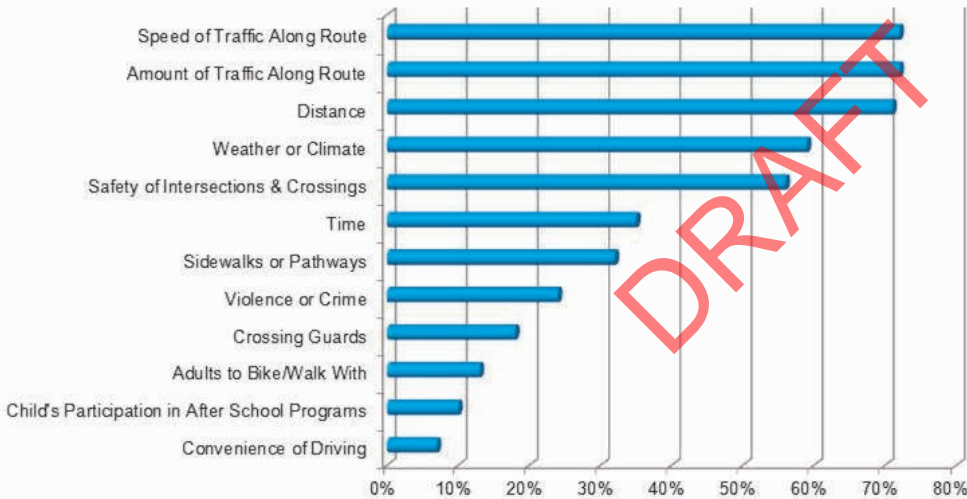
# PARENT & STUDENT SURVEY RESULTS

**Omro Elementary School Student Survey Results  
Morning and Afternoon Comparison**



Survey Data Collected in Spring 2010

**Omro Elementary School  
Parent Concerns of Children That Do Not Walk or Bike To School**



Survey Data Collected in Winter 2008

## EXISTING FACILITIES: NON-MOTORIZED

The Omro School District is very large district made up of mostly rural areas. Only 43% of the Elementary School students live within two miles of the school, and many of these students must cross one or more major "barriers" – State Highways 21 and 116 and the Fox River – to walk/bike there. The City of Omro does have a sidewalk network, however several gaps exist and there are areas that lack sidewalks entirely. Additional walking/biking facilities include:

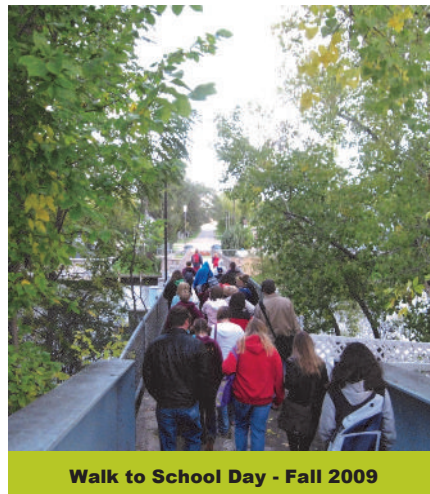
- Fox Trail
- Pedestrian bridge over the Fox River
- Designated routes with SRTS signage

## WORK IN PROGRESS

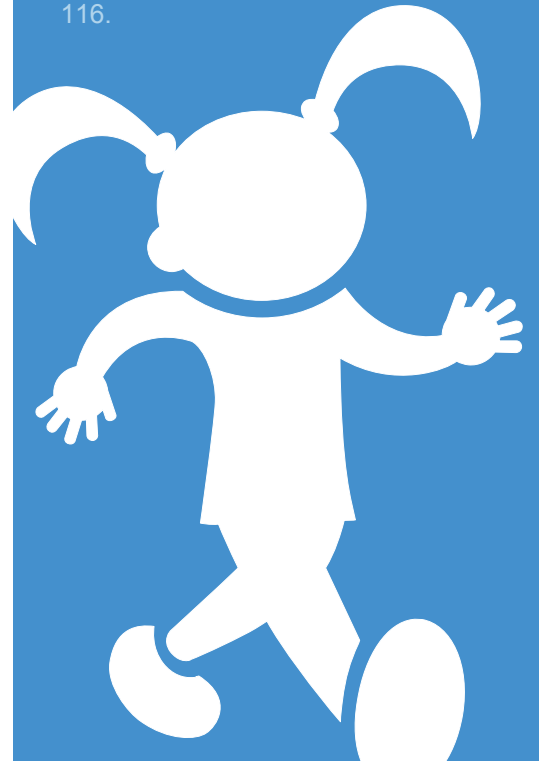
In 2010, the City of Omro and Omro School District were awarded an SRTS Grant to build a bicycle maintenance/storage facility for the Omro MS Bicycle Program, fill in a sidewalk gap near H.B. Patch Elementary School, and replace outdated pedestrian crossing signage/signals on STH 21 and STH 116.



Visit With Rep. Tom Petri - Fall 2010



Walk to School Day - Fall 2009



# OMRO ELEMENTARY & MIDDLE SCHOOLS BIKE/WALK AUDIT RESULTS

Source: Aerial photography Winnebago County, 2009.  
ECWRPC provided the school location and  
bike and walk audit results.

Audit Conducted  
??,??,????



This data was created for use by the East Central Wisconsin Regional Planning Commission Geographic Information System. Any other use/application of this information is the responsibility of the user and such use/application is at their own risk. East Central Wisconsin Regional Planning Commission disclaims all liability regarding fitness of the information for any use other than for East Central Wisconsin Regional Planning Commission business.

Map Prepared By  
EAST CENTRAL WISCONSIN  
REGIONAL PLANNING COMMISSION-JANUARY 2012



- Excessive Traffic Volume & Speed
- Excessive Traffic Speed
- Bike Racks
- No Sidewalk
- Bus Loading Area
- Area Used by Most Parents Picking-Up Students
- Multi-Use Trail
- Bike Lane



## EXAMPLES

*rapid repeating flashing beacon*

*pedestrian refuge island*



*ladder style crosswalk*

The street design elements shown above help identify crossings and calm the speed of vehicular traffic. Any or all of these could be used on streets near Omro ES.



## RECOMMENDATIONS

### ~ Engineering ~

- **Ladder style crosswalks at designated intersections**
- **Continue to explore pedestrian/bicycle-friendly traffic solutions for STH 21 & 116**
- **Signage for designated bus and parent parking**
- **Use traffic calming devices at key intersections at and around the school** - (i.e. S. Webster Ave. & W. Main St.; N. Webster Ave. & W. River Dr.)
- **Consider bicycle/pedestrian accommodations during the (re)construction of nearby streets.**

### ~ Enforcement ~

- **Enforce Sidewalk Snow Removal Ordinance** - Work with the City of Omro to ensure sidewalks are clear during the winter months.
- **Crossing Guards**
- **Enforce School Zone Speed Limits and No Parking Areas** - Work with the Omro Police Department to enforce Speed Limits and No Parking Areas, particularly in school zones.

### ~ Education ~

- **Classroom Activities** - Add bicycle/pedestrian safety to the curriculum (i.e. bike education in Physical Education class, poster contest in Art class, etc.).
- **Bicycle/Pedestrian Safety Speakers**
- **Bicycle Rodeo/Safety Course** - Coordinate bike rodeos featuring bike safety lessons and tune-ups.
- **Parent Pledge Program** - Continue participating in the Regional SRTS Parent Pledge Program.

### ~ Encouragement ~

- **Walk to School Day/Bike Safety Day** - Continue participating in these annual events to promote walking and biking safely.
- **Walking School Bus / Bicycle Train Programs** - Continue to coordinate and enhance these efforts. Accompanied by at least one trained adult, students meet at designated locations and walk/bike to school together.
- **Walk to Win Program**
- **Golden Sneaker Award** - A competition between classrooms to have the greatest number of students walking/biking to school.
- **Mileage Punch Card Program** - Have principals or faculty members stand at a particular spot on different days and punch cards. On days of bad weather (i.e. rain or snow) students may receive double punches. Reward students with toe tokens or prizes donated by the community.

### ~ Evaluation ~

- **Student and Parent Surveys** - Conduct periodic parent and student surveys in conjunction with the Regional SRTS Program.
- **Bike/Walk Audits** - Continue annual audits to assess safety concerns at and around the school.
- **Geography Class** - Have students put a push pin on a map where they live and color code the push pin to match the mode of transportation the use to get to and from school.



East Central Wisconsin Regional  
Planning Commission  
400 Ahnaip Street, Suite 100  
Menasha, WI 54952  
920.751.4770  
[www.eastcentralsrts.org](http://www.eastcentralsrts.org)