



IMMANUEL LUTHERAN SCHOOL ACTION PLAN

HORTONVILLE AREA SAFE ROUTES TO SCHOOL PROGRAM



920.757.6606 | W7265 School Road | Greenville, WI 54942 | EastCentralSRTS.org

SAFE ROUTES TO SCHOOL BACKGROUND INFORMATION

The purpose of the SRTS program is to provide safe pedestrian and bicycle facilities that encourage healthier lifestyles. Programs can be established to educate students, parents, and the community on the benefits of walking and bicycling to school and provide tips to do so safely. Major SRTS goals are:

1. To enable and encourage children, including those with disabilities, to walk and bike to school.
2. To make bicycling and walking to school a safer and more appealing transportation alternative, thereby encouraging a healthy and active lifestyle from an early age.
3. To facilitate the planning, development, and implementation of projects and activities that will improve safety and reduce traffic, fuel consumption, and air pollution in the vicinity of schools.

SRTS Planning efforts assess the facilities and conditions near school, examine how students are currently traveling to/from school, and identify safety concerns/issues raised by parents and the community. Infrastructure and non-infrastructure recommendations are then created and implemented, sometimes with grant funding assistance, by the SRTS Task Force and other community members. SRTS Plans focus on projects within two miles of an elementary or middle school (Kindergarten-8th grade) and address the 5 E's:

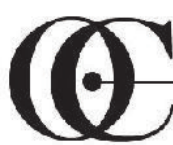
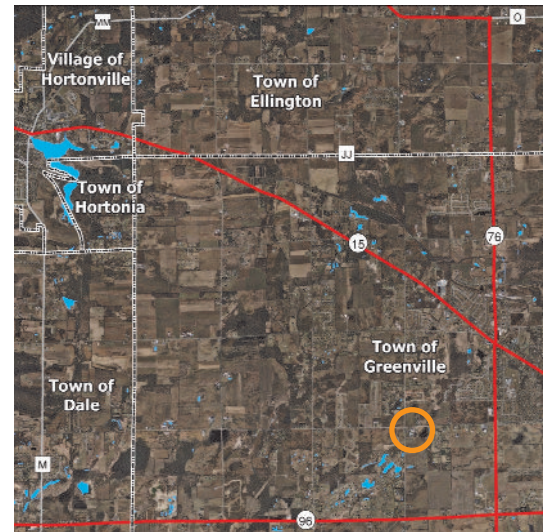
Engineering Enforcement Education Encouragement Evaluation

IMMANUEL LUTHERAN BACKGROUND INFORMATION

Immanuel Lutheran School is located in a rural area in the Town of Greenville at the intersection of School Rd. and Julius Dr. The majority of students, approximately 59 percent, travel to and from school via family vehicle. In comparison, no students travel by foot or bike (even though about 17 percent of students live within one mile of school). For parents of children that do not walk or bike to/from school, their top three concerns deal with the speed of traffic, amount of traffic, and distance from school. There are no sidewalks and very few homes in the surrounding area, and the speed limits on adjacent roads range from 45-55 mph. However, the Fox West YMCA and nearby STH 76 Trail are less than a mile away; connecting to these would be an asset to the school and its students. The lack of signage and markings in the recently-expanded parking lot (next to the new church facility) has caused a few issues, but there are plans to fix this in the near future.

SCHOOL DEMOGRAPHICS

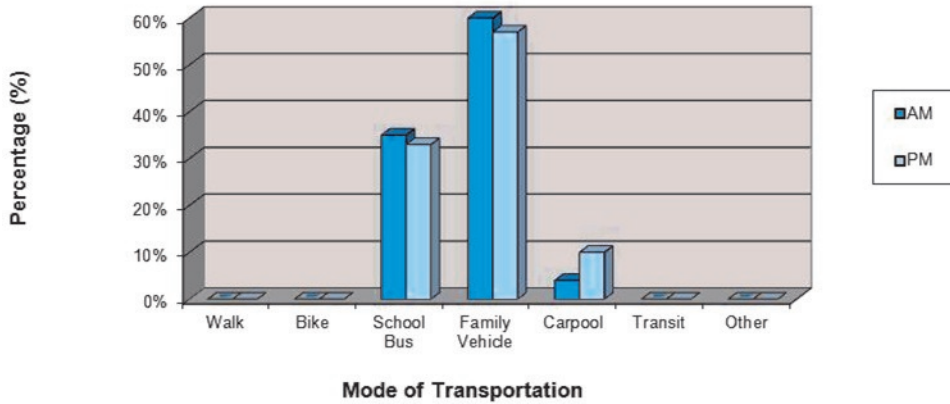
Enrollment:	227 students
Grades:	K - 8
Principal:	Richard Huebner
Start Time:	8:00 a.m.
End Time:	3:05 p.m.
Task Force Rep.:	Richard Huebner



SRTS Background Information.....	1
Survey Results & Background Info.....	2
Bike & Walk Audit Results.....	3
Recommendations: The 5 E's.....	4

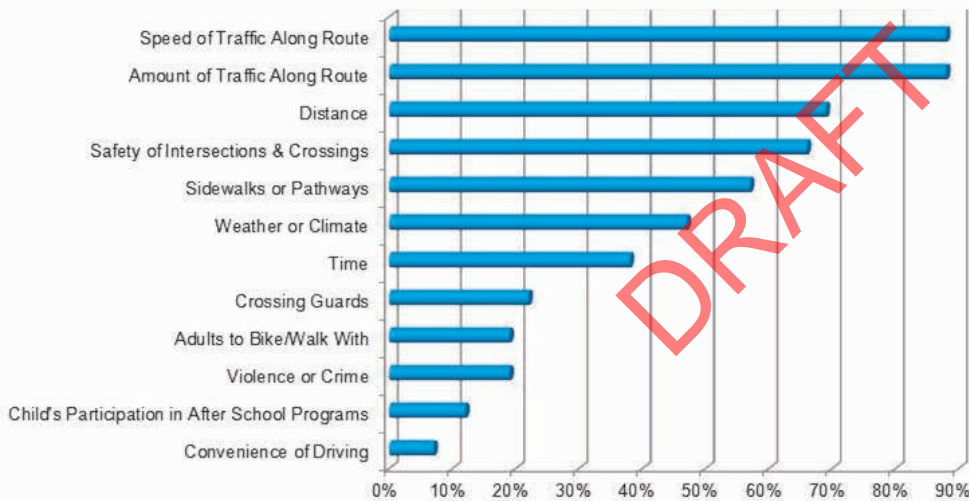
PARENT & STUDENT SURVEY RESULTS

**Immanuel Lutheran School Student Survey Results
Morning and Afternoon Comparison**



Survey Data Collected in Fall 2009

**Immanuel Lutheran School
Parent Concerns of Children That Do Not Walk or Bike To School**



Survey Data Collected in Fall 2009

Background Information

The Village of Hortonville and Town of Greenville are growing communities located west of the Fox Cities. Both are divided by one or more state highways – STH 15 & 76. Although two safe tunnel crossings have been built, these high traffic/speed roads still present a “barrier” to walking and biking. Few sidewalks are located in either municipality, except in the central part of Hortonville. Instead, multi-use trails serve as the primary non-motorized transportation facilities, including:

- WIOUWASH State Trail
- STH 76 Trail
- STH 15 Trail
- Lily of the Valley Trail

WORK IN PROGRESS

The Hortonville SRTS Task Force has been meeting regularly since 2009 to address safety concerns and promote walking and biking to school safely. Schools continue to take part SRTS-related activities, including Walk to School Day and Bike Safety Day. In 2010, the Task Force applied for SRTS grant funding to create a trail extension, install signage, increase law enforcement, and add bicycle curriculum. Although these projects were not awarded, they still have merit and can be pursued in the future.



Walking Event in Lions Park - Oct. 2011



Walking Event in Lions Park - Oct. 2011



IMMANUEL LUTHERAN SCHOOL BIKE/WALK AUDIT RESULTS

Source: Aerial photography and right-of-way data provided by Cutagamie County, ????. ECWRPC provided the school location and bike and walk audit results.

Audit Conducted
?? ?? ???? ?



This data was created for use by the East Central Wisconsin Regional Planning Commission Geographic Information System. Any other use/application of this information is the responsibility of the user and such use/application is at their own risk. East Central Wisconsin Regional Planning Commission disclaims all liability regarding fitness of the information for any use other than for East Central Wisconsin Regional Planning Commission business.

Map Prepared By
EAST CENTRAL WISCONSIN
REGIONAL PLANNING COMMISSION-DECEMBER 2011

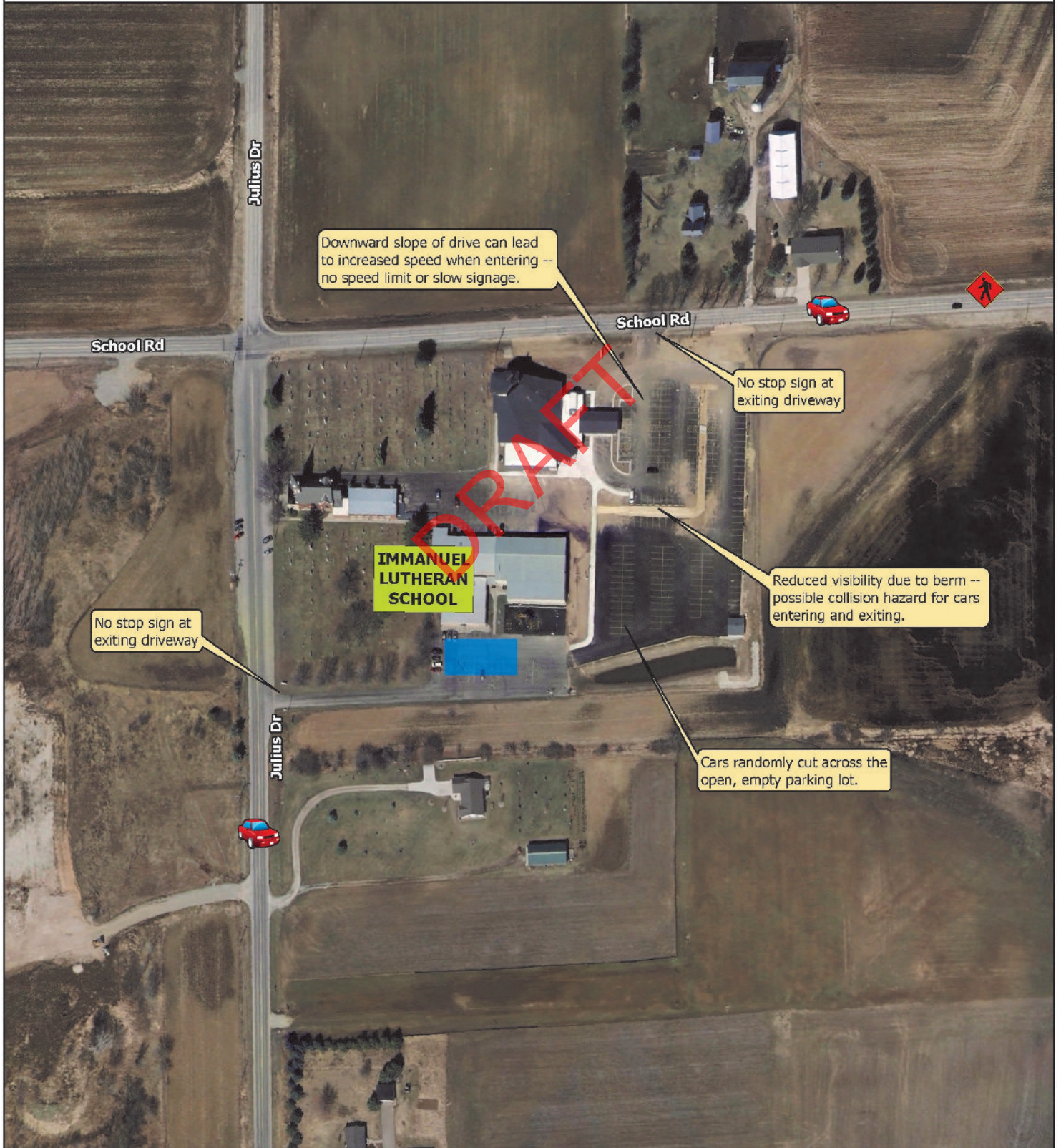


Excessive Traffic Speed

Bus Loading Area

Students Walking on Road --
No Sidewalk & Narrow Shoulder

Area Used by Most Parents
Picking-Up Students



EXAMPLES

multi-use trail



The bicycle/pedestrian facility shown above helps increase connectivity throughout the community. This same approach could be used near Immanuel Lutheran.



East Central Wisconsin Regional
Planning Commission
400 Ahnaip Street, Suite 100
Menasha, WI 54952
920.751.4770
www.eastcentralsrts.org

SRTS Action Plan prepared by East Central Wisconsin Regional Safe Routes to School Program, April 2012. For additional information, please contact Melissa Kraemer Badtke, Regional SRTS Coordinator, at 920.751.4770 or visit www.eastcentralsrts.org.

RECOMMENDATIONS

~ Engineering ~

- **High Visibility Crosswalks** - Emphasize the recommended path for crossing an intersection.
- **Traffic Calming Measures** - Include traffic calming measures (i.e. pedestrian refuge island, curb bump-outs, etc.) when reconstructing roadways near schools or on routes that students use to walk/bike to school.
- **Multi-Use Trails** - Create off-street trails connecting to the existing STH 76 Trail to the east and the residential subdivisions to the north.
- **Add Stop Signs at Driveway Exits**

~ Enforcement ~

- **Law Enforcement Presence** - Increase the presence of law enforcement near school during arrival/dismissal times (possible opportunity to partner with the FVTC Law Enforcement Program).
- **Speed Trailers** - Place these at or near schools to show passing motorists the speed at which they are traveling.
- **School Zone Campaign** - First Week: parents and students hold banners to remind drivers to slow down in school zones. Second Week: parent volunteers use radar guns to track drivers who are speeding in school zones and they receive a letter in the mail. Third Week: a law enforcement officer writes citations to speeding drivers.

~ Education ~

- **Parent Pledge Program** - Continue participating in the Regional SRTS Parent Pledge Program.
- **Bike Rodeo/Safety Course** - Coordinate bike rodeos featuring bike safety lessons and tune-ups.
- **Classroom Activities** - Add bicycle/pedestrian safety to the curriculum (i.e. bike education in P.E. class, poster contest in Art class, etc.).
- **Media Campaign** - Create signage and public service announcements (PSAs) focused on pedestrian awareness and safety in school zones.
- **Pick-up & Drop-off Procedures** - Educate parents on the pick-up, drop-off, and parking lot procedures at and around the school. Encourage vehicles to slow down around the corner in the parking lot.

~ Encouragement ~

- **Frequent Walker Card/Frequent Rider Miles** - Have faculty members check students' punch cards every time they walk/bike to school. Once their card is full, students will receive a reward.
- **Golden Sneaker Award** - A competition between classrooms to have the greatest number of students walking/biking to school.
- **Walking School Bus Program or Cycle Train** - Students meet at a designated location and walk or bike to school together (accompanied by at least one adult).
- **No Idling Policy** - Encourage bus drivers and parents to turn off the engines of their vehicles while waiting for students.

~ Evaluation ~

- **Student and Parent Surveys** - Conduct periodic parent and student surveys in conjunction with the Regional SRTS Program.
- **Geography Class** - Have students put a push pin on a map where they live and color code the push pin to match the mode of transportation the use to get to and from school.
- **Bike/Walk Audits** - Continue annual audits to assess safety concerns at and around the school.