



PARKVIEW ELEMENTARY SCHOOL ACTION PLAN

NEW LONDON SAFE ROUTES TO SCHOOL PROGRAM



920.982.8538 | 1300 Werner-Allen Road | New London, WI 54961 | EastCentralSRTS.org

SAFE ROUTES TO SCHOOL BACKGROUND INFORMATION

The purpose of the SRTS program is to provide safe pedestrian and bicycle facilities that encourage healthier lifestyles. Programs can be established to educate students, parents, and the community on the benefits of walking and bicycling to school and provide tips to do so safely. Major SRTS goals are:

1. To enable and encourage children, including those with disabilities, to walk and bike to school.
2. To make bicycling and walking to school a safer and more appealing transportation alternative, thereby encouraging a healthy and active lifestyle from an early age.
3. To facilitate the planning, development, and implementation of projects and activities that will improve safety and reduce traffic, fuel consumption, and air pollution in the vicinity of schools.

SRTS Planning efforts assess the facilities and conditions near school, examine how students are currently traveling to/from school, and identify safety concerns/issues raised by parents and the community. Infrastructure and non-infrastructure recommendations are then created and implemented, sometimes with grant funding assistance, by the SRTS Task Force and other community members. SRTS Plans focus on projects within two miles of an elementary or middle school (Kindergarten-8th grade) and address the 5 E's:

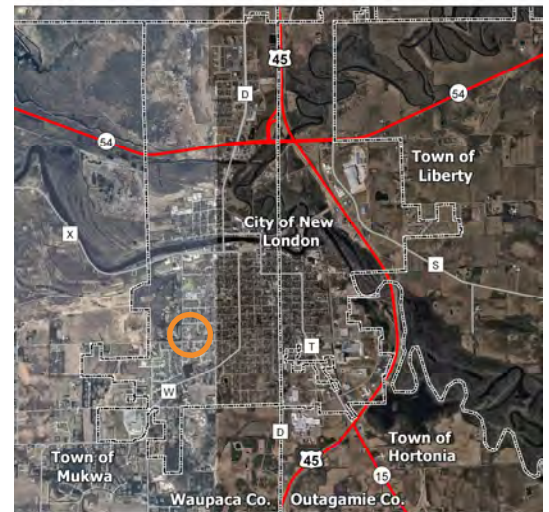
Engineering Enforcement Education Encouragement Evaluation

PARKVIEW ELEMENTARY BACKGROUND INFORMATION

Parkview Elementary School is located in the City of New London on the corner of W. Jennings St. and Werner-Allen Rd. The majority of students, 83 percent, are either bussed to and from school or ride in a family vehicle while 15 percent reported walking. The top three reasons for parents not allowing their children to walk or bike to school were the safety of intersections and crossings along with the speed and amount of traffic. Additionally, many of the streets surrounding the school lack sidewalk facilities which makes walking or biking less appealing for both parents and students.

SCHOOL DEMOGRAPHICS

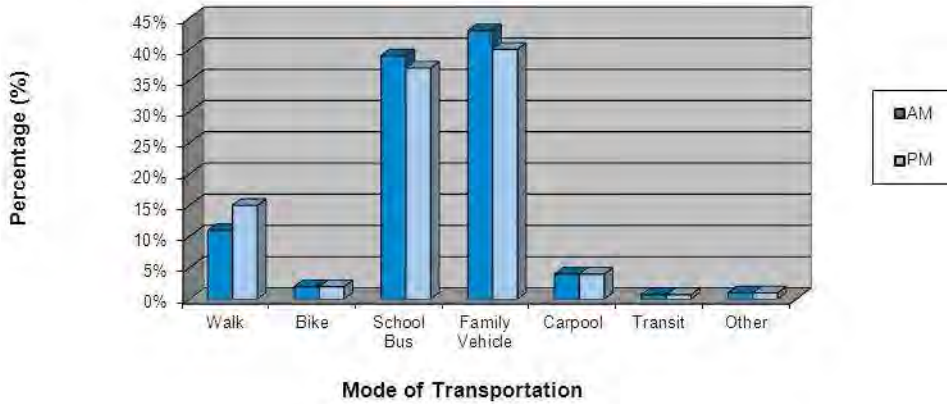
Enrollment: 340 students
Grades: K - 4
Principal: Jo Collar
Start Time: 8:10 a.m.
End Time: 3:10 p.m.
Task Force Rep.:



SRTS Background Information.....1
 Survey Results & Background Info.....2
 Bike & Walk Audit Results.....3
 Recommendations: The 5 E's.....4

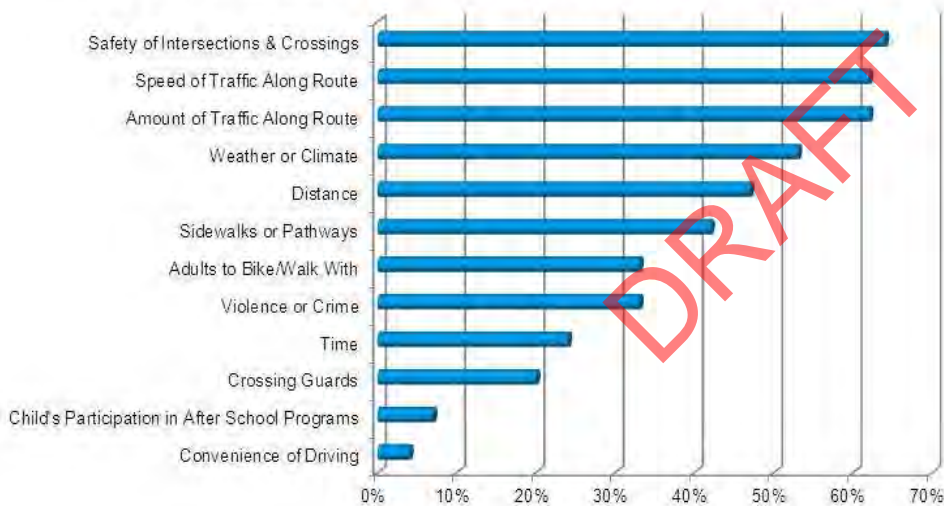
PARENT & STUDENT SURVEY RESULTS

**Parkview Elementary School Student Survey Results
Morning and Afternoon Comparison**



Survey Data Collected in January 2012

**Parkview Elementary School
Parent Concerns of Children That Do Not Walk or Bike to School**



Survey Data Collected in January 2012



**Students Cross W. Jennings St.
After School**



Bike Racks at Parkview ES

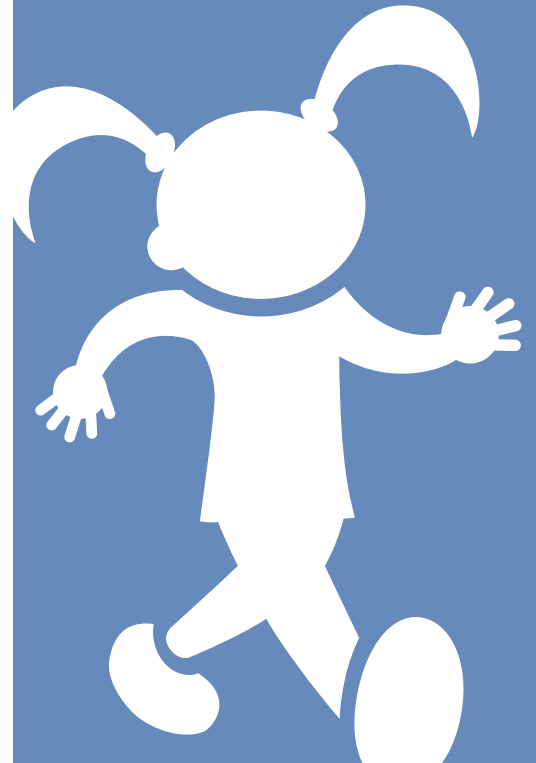
Background Information

The School District of New London is quite large and made up of mostly rural areas. Outside of the City of New London, pedestrian/bicycle accommodations are basically non-existent. In the city, sidewalks are located along at least one side of many streets, especially in the central part of the community. However, several gaps exist and there are areas that lack sidewalks entirely. Other facilities include:

- Trails within Hatten Park
- Trail within and connecting Riverside and River Trail Parks
- Bernegger Riverwalk
- Trail along N. Shawano St. connecting to Pfeifer Park
- Trail connecting Werner-Allen Rd. to Pershing Rd.

WORK IN PROGRESS

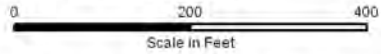
New London schools continue to take part in SRTS-related events and activities, such as Bike Safety Day. In the fall of 2011, individuals from the school district and city began working with the East Central Regional SRTS Program to address safety concerns near schools. This group continues to meet to develop and implement SRTS strategies.



PARKVIEW ELEMENTARY SCHOOL BIKE/WALK AUDIT RESULTS

Source: Aerial photography Waupaca County, 2010.
ECWRPC provided the school location and
bike and walk audit results.

Audit Conducted
11/01/2011 - PM



This data was created for use by the East Central Wisconsin Regional Planning Commission Geographic Information System. Any other use/application of this information is the responsibility of the user and such use/application is at their own risk. East Central Wisconsin Regional Planning Commission disclaims all liability regarding fitness of the information for any use other than for East Central Wisconsin Regional Planning Commission business.

Map Prepared By
EAST CENTRAL WISCONSIN
REGIONAL PLANNING COMMISSION-JANUARY 2012



-  High Traffic Volume at Dismissal
-  Crossing Guard
-  Bike Racks
-  No Sidewalk
-  Bus Loading Area
-  Area Used by Most Parents Picking-Up Students



RECOMMENDATIONS

~ Engineering ~

- **High visibility ladder style crosswalks at designated intersections** - High visibility crosswalks improve pedestrian visibility to drivers and emphasize the recommended path for crossing an intersection.
- **Consider options to separate sidewalk from angled parking in front of the school**
- **Sidewalk Stencils** - Students and members of the community will have a visual reminder of designated routes to and from school. The stencils would encourage students to use these routes and reassure parents that planning and analysis has gone into developing the routes.
- **Consider traffic calming devices (curb extensions) to slow down traffic at key intersections at and around the school during road reconstruction projects**
- **Consider bike/pedestrian accommodations (including sidewalks) during road reconstruction projects around the school and throughout the community**

~ Enforcement ~

- **Law Enforcement Presence** - Work with the New London Police Department to increase enforcement at and around schools, particularly during drop-off and pick-up times.
- **Corner Captains** - Have adults stationed along a designated route to make sure that children who are walking to or from school get there safely.
- **Student Safety Patrol Program** - Students are trained to look for traffic and help other students cross at designated intersections around the school.

~ Education ~

- **Parent Pledge Program** - Parents sign a pledge agreeing to keep children safe in and around school zones. Pledge forms can be customized to each school and can include the following guidelines: slow down, be alert, be patient, review and know the school procedures, cross only at crosswalks, stay off cell phones, etc. After parents sign the pledge they receive a window cling to display in their vehicle.
- **Student Helmet Pledge Program** - Similar to the Parent Pledge Program, students would sign a pledge agreeing to ALWAYS wear their helmet while riding a bicycle.

~ Encouragement ~

- **Bicycle and Pedestrian Quiz Show** - Based on the television quiz show, *Jeopardy*, this activity involves students playing a game in order to learn about pedestrian and bicycle safety.
- **Frequent Walker Card/Frequent Rider Miles** - Students are given cards that get punched every time they walk or bike to school. Once their card is full they will receive an incentive or become eligible to win an incentive.
- **Walking School Bus/ Cycle Train Program** - The Walking School Bus is simply a group of students walked to school along a designated route by a parent or adult volunteer. The Cycle Train is basically the bicycle version of a Walking School Bus.
- **Continued Participation in Annual Walk/Bike to School Day Events**

~ Evaluation ~

- **Student and Parent Surveys** - Conduct periodic parent and student surveys in conjunction with the Regional SRTS Program.
- **Bike/Walk Audits** - Continue annual audits to assess safety concerns at and around the school

EXAMPLES

rapid repeating flashing beacon

pedestrian refuge island



ladder style crosswalk

The street design elements shown above help identify crossings and calm the speed of vehicular traffic. Any or all of these could be used on streets near Parkview ES.



Recommendations Developed by
the New London SRTS Task Force



East Central Wisconsin Regional
Planning Commission
400 Ahnaip Street, Suite 100
Menasha, WI 54952
920.751.4770
www.eastcentralsrts.org