



THEISEN MIDDLE SCHOOL ACTION PLAN

FOND DU LAC SAFE ROUTES TO SCHOOL PROGRAM



920.929.2850 | 525 E. Pioneer Road | Fond du Lac, WI 54935 | EastCentralSRTS.org

SAFE ROUTES TO SCHOOL BACKGROUND INFORMATION

The purpose of the SRTS program is to provide safe pedestrian and bicycle facilities that encourage healthier lifestyles. Programs can be established to educate students, parents, and the community on the benefits of walking and bicycling to school and provide tips to do so safely. Major SRTS goals are:

1. To enable and encourage children, including those with disabilities, to walk and bike to school.
2. To make bicycling and walking to school a safer and more appealing transportation alternative, thereby encouraging a healthy and active lifestyle from an early age.
3. To facilitate the planning, development, and implementation of projects and activities that will improve safety and reduce traffic, fuel consumption, and air pollution in the vicinity of schools.

SRTS Planning efforts assess the facilities and conditions near school, examine how students are currently traveling to/from school, and identify safety concerns/issues raised by parents and the community. Infrastructure and non-infrastructure recommendations are then created and implemented, sometimes with grant funding assistance, by the SRTS Task Force and other community members. SRTS Plans focus on projects within two miles of an elementary or middle school (Kindergarten-8th grade) and address the 5 E's:

Engineering Enforcement Education Encouragement Evaluation

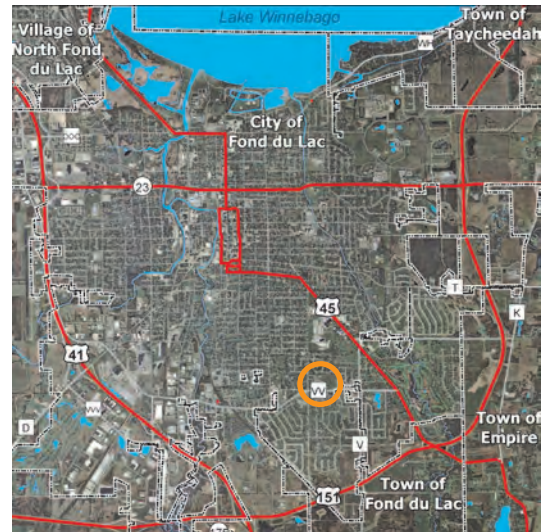
THEISEN MIDDLE BACKGROUND INFORMATION

Theisen Middle School is located in the City of Fond du Lac on CTH VV / E. Pioneer Rd. The majority of students, approximately 39 percent, travel to and from school via family vehicle. In comparison, an average of 32 percent of students travel by foot or bike (even though about 63 percent of students live within one mile of school). For parents of children that do not walk or bike to/from school, their top three concerns deal with the distance from school, weather, and speed of traffic. Recently, average daily traffic counts for streets near school were as follows: CTH VV / E. Pioneer Rd. – 9,300; CTH V – 4,100; and Martin Ave. – 2,800 vehicles. These heavily-travelled thoroughfares combined with a lack of sidewalks, especially along CTH VV / E. Pioneer Rd., present additional challenges for students wishing to walk or bike. However, adult crossing guards are available at several intersections in the surrounding area to offer assistance.

SCHOOL DEMOGRAPHICS

Enrollment:	471 students
Grades:	6 - 8
Principal:	Brad Nerat
Start Time:	8:00 a.m.
End Time:	2:52 p.m.
Task Force Rep.:	FdL School & Community Parking & Traffic Committee

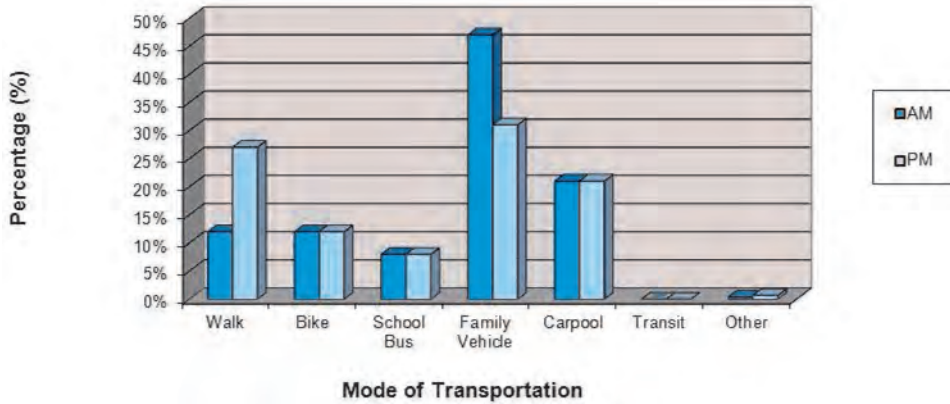
*MISSING:
Photo of Theisen MS*



SRTS Background Information.....	1
Survey Results & Existing Facilities.....	2
Bike & Walk Audit Results.....	3
Recommendations: The 5 E's.....	4

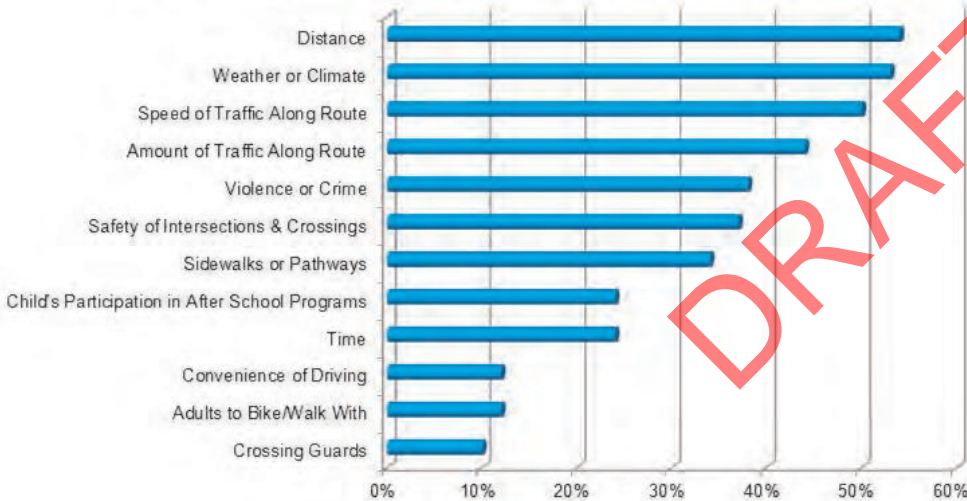
PARENT & STUDENT SURVEY RESULTS

**Theisen Middle School Student Survey Results
Morning and Afternoon Comparison**



Survey Data Collected in Spring 2009

**Theisen Middle School
Parent Concerns of Children That Do Not Walk or Bike to School**



Survey Data Collected in Fall 2009

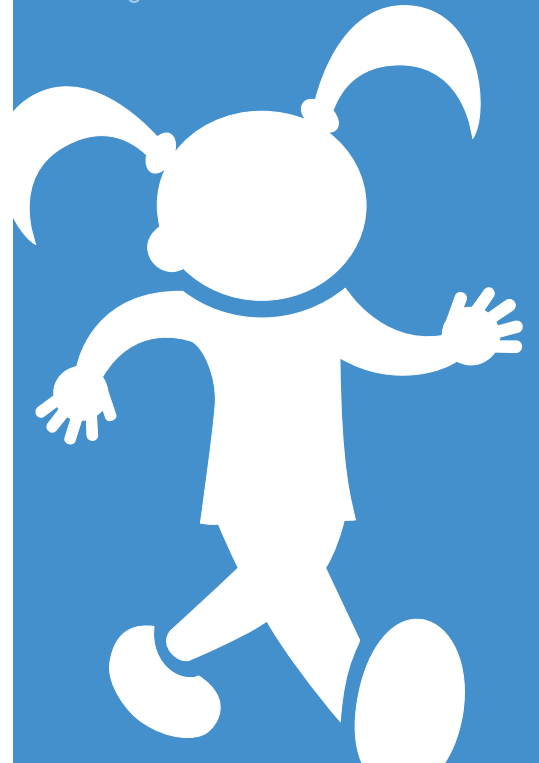
EXISTING FACILITIES: NON-MOTORIZED

Sidewalks are located along most streets within the City of Fond du Lac, and designated on-street bike routes are also in place. Over the past several years, other non-motorized transportation facilities have been developed and expanded within the Fond du Lac School District. These include:

- Brooke Street Trail
- Mascoutin Valley Recreation Trail
- Peebles Recreation Trail
- Prairie Trail
- Wild Goose State Trail

WORK IN PROGRESS

In 2010, Fond du Lac School District was awarded an SRTS Grant. Near Theisen MS, infrastructure improvements will include _____ at the E. Pioneer Rd. & Sherwood Blvd. intersection. Throughout the district, non-infrastructure funds will be used to establish a rewards program, expand the educational campaign on mid-block crossing, pilot a Speed Watch program, and implement a Walking School Bus program, among other efforts.



MISSING:
Photo of walking/
biking event at
Theisen MS

MISSING:
Photo of walking/
biking event at
Theisen MS

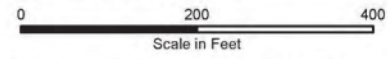
???

???

THEISEN MIDDLE SCHOOL BIKE/WALK AUDIT RESULTS

Source: Aerial photography City of Fond du Lac, 2010.
ECWRPC provided the school location and
bike and walk audit results.

Audit Conducted
02.12.2009



This data was created for use by the East Central Wisconsin Regional Planning Commission Geographic Information System. Any other use/application of this information is the responsibility of the user and such use/application is at their own risk. East Central Wisconsin Regional Planning Commission disclaims all liability regarding fitness of the information for any use other than for East Central Wisconsin Regional Planning Commission business.

Map Prepared By
EAST CENTRAL WISCONSIN
REGIONAL PLANNING COMMISSION-NOVEMBER 2011



-  Excessive Traffic Volume & Speed
-  Bus Loading Area
-  Crossing Guard
-  Area Used by Most Parents Picking-Up Students
-  Crosswalk Not Painted
-  'Cut Through' Sidewalk Connection
-  No Sidewalk



RECOMMENDATIONS

~ Engineering ~

- **High Visibility Crosswalks** - Emphasize the recommended path for crossing an intersection.
- **Sidewalk Stencils** - Identify specific routes for students to use when getting to/from school.
- **Complete Streets Ordinance** - Adopt a policy to ensure streets are designed and built to allow safe access for all users (pedestrians, bicyclists, motorists, and bus riders).

~ Enforcement ~

- **Speed Signs**
- **School Zone Campaign** - First Week: parents and students hold banners to remind drivers to slow down in school zones. Second Week: parent volunteers use radar guns to track drivers who are speeding in school zones and they receive a letter in the mail. Third Week: a law enforcement officer writes citations to speeding drivers.
- **Corner Captains** - Have adults spaced at equal intervals along a designated route to make sure that children who are walking to or from school get there safely.
- **Neighborhood Watch Program**
- **Speed Trailers** - Place these at or near schools to show passing motorists the speed at which they are traveling.
- **Increased Law Enforcement Presence**

~ Education ~

- **Media/Marketing Campaign** - Create signage and public service announcements (PSAs) focused on pedestrian awareness and safety in school zones.
- **Bike Rodeo/Safety Course** - Coordinate bike rodeos featuring bike safety lessons and tune-ups.
- **Walk or Bike Across America** - As a part of math or geography class, have students keep track of the miles they accumulate by walking/biking to school.
- **Bicycle/Pedestrian Safety Speakers**
- **Parent Pledge Program** - Continue participating in the Regional SRTS Parent Pledge Program.

~ Encouragement ~

- **Frequent Walker Card/Frequent Rider Miles** - Have faculty members check students' punch cards every time they walk/bike to school. Once their card is full, students will receive a reward.
- **Golden Sneaker Award** - A competition between classrooms to have the greatest number of students walking/biking to school.
- **Walking School Bus Program or Cycle Train** - Students meet at a designated location and walk or bike to school together.
- **Bicycle and Pedestrian Quiz Show** - Have students play a game, similar to TV's Jeopardy, to learn about pedestrian/bicycle safety.
- **Walking Wednesdays Program** - Schedule recurring times (weekly or monthly) for students to walk/bike to school.
- **Recess Rovers/Morning Mile**

~ Evaluation ~

- **Student and Parent Surveys** - Conduct periodic parent and student surveys in conjunction with the Regional SRTS Program.
- **Bike/Walk Audits** - Continue to assess school and area around it for additional safety concerns.
- **Geography Class** - Have students put a push pin on a map where they live and color code the push pin to match the mode of transportation the use to get to and from school.

EXAMPLES

rapid repeating flashing beacon

pedestrian refuge island



ladder style crosswalk

The street design elements shown above help identify crossings and calm the speed of vehicular traffic. Any or all of these could be used on streets near Theisen MS.



East Central Wisconsin Regional
Planning Commission
400 Ahnaip Street, Suite 100
Menasha, WI 54952
920.751.4770
www.eastcentralsrts.org