

SPRING ROAD ELEMENTARY SCHOOL BIKE/WALK AUDIT RESULTS

Source: Aerial photography and base data Winnebago County, 2010. ECWRPC provided the school location and bike and walk audit results.

Audit Conducted
05.24.2011 - A.M.



0 195 390
Scale in Feet

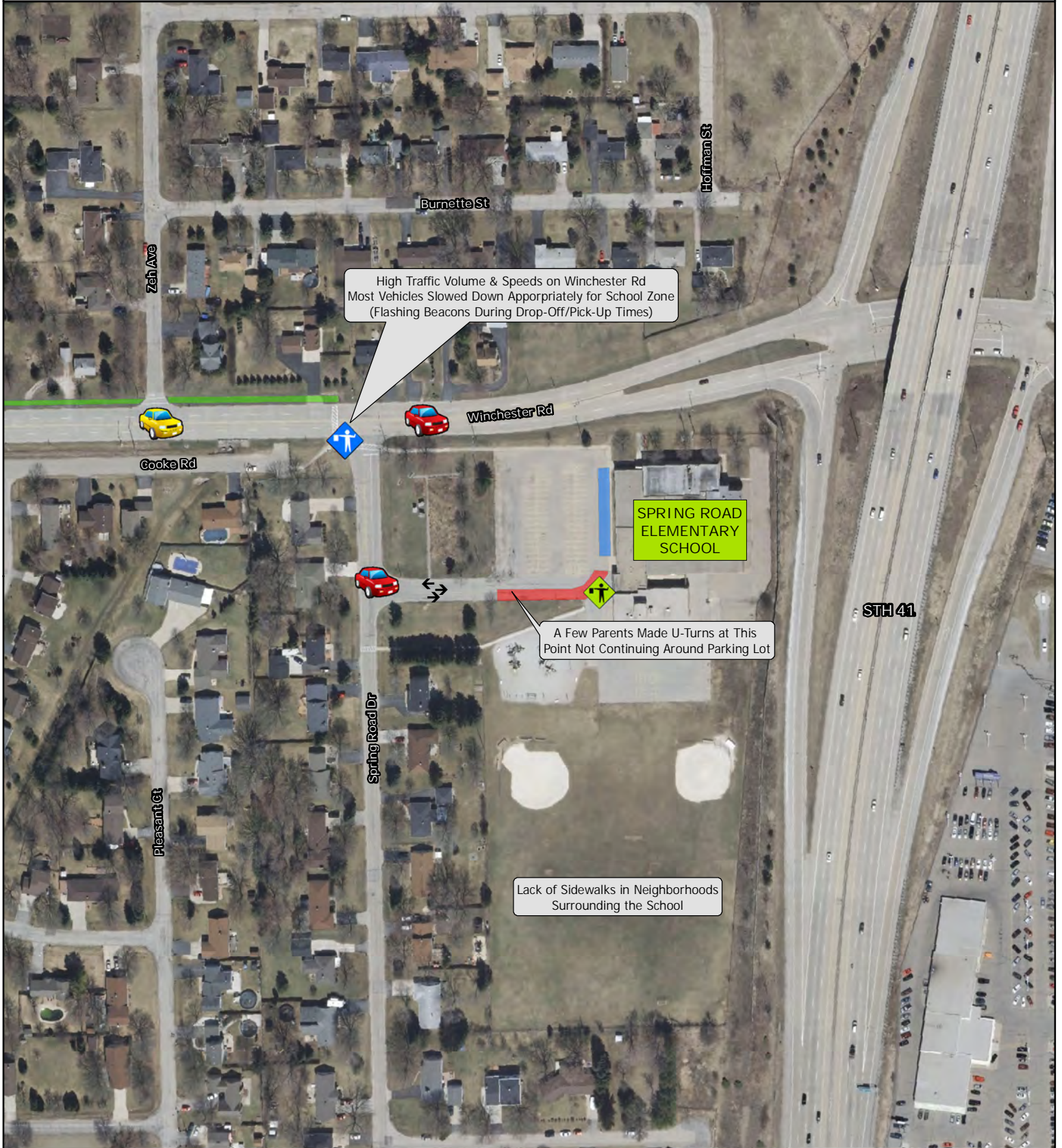


This data was created for use by the East Central Wisconsin Regional Planning Commission Geographic Information System. Any other use/application of this information is the responsibility of the user and such use/application is at their own risk. East Central Wisconsin Regional Planning Commission disclaims all liability regarding fitness of the information for any use other than for East Central Wisconsin Regional Planning Commission business.

Prepared By
EAST CENTRAL WISCONSIN
REGIONAL PLANNING COMMISSION-SEPTEMBER 2011



-  High Traffic Volume
-  High Traffic Speeds
-  Crossing Guard
-  Two Staff Members Supervise Drop-Off / Pick-Up
-  Parent Drop-Off Pick-Up Area
-  Bus Loading Area
-  Multi-Use Trail



High Traffic Volume & Speeds on Winchester Rd
Most Vehicles Slowed Down Appropriately for School Zone
(Flashing Beacons During Drop-Off/Pick-Up Times)

SPRING ROAD
ELEMENTARY
SCHOOL

A Few Parents Made U-Turns at This
Point Not Continuing Around Parking Lot

Lack of Sidewalks in Neighborhoods
Surrounding the School