

CALUMET COUNTY

Safe Routes to School Action Plan

DRAFT

Abstract

TITLE: Calumet County Safe Routes to School
Action Plan

CONTACT: Melissa Kraemer-Badtke

AUTHORS: Ashley Tracy, Planner – Safe Routes to School
Hannah Keckeisen, Planner – Safe Routes to School
Melissa Kraemer Badtke, Principal Transportation Planner

SUBJECT: Safe Routes to School Action Plan

DATE: July 2020

PLANNING AGENCY: East Central Wisconsin Regional Planning Commission
400 Ahnaip Street, Suite 100
Menasha, WI 54952
www.ecwrpc.org

This Safe Routes to School Action Plan describes the existing conditions around schools within Calumet County. The five (5) schools districts included within this action plan are Brillion School District, the Chilton School District, the Hilbert School District, the New Holstein School District, and the Stockbridge School District. This action plan also includes future community improvements based on these conditions and information gathered by parents of students.

Table of Contents

The Six E's of Safe Routes to School	1
Calumet County Equity Analysis	2
Brillion School District	3
School District Boundary Map	4
School District Parent Survey	5
Events and Program Participation	6
Current Bicycle and Pedestrian Network	7
City of Brillion Bicycle and Pedestrian Recommendations	8
Brillion Elementary and Middle School Educational Recommendations	10
Chilton School District	12
School District Boundary Map	13
Events and Program Participation	14
Current Bicycle and Pedestrian Network	15
City of Chilton Bicycle and Pedestrian Recommendations	16
Chilton Elementary and Middle School Educational Recommendations	18
Hilbert School District	20
School District Boundary Map	21
School District Parent Survey	22
Events and Program Participation	23
Current Bicycle and Pedestrian Network	24
Village of Hilbert Bicycle and Pedestrian Recommendations	25
Hilbert Elementary and Middle School Educational Recommendations	27
New Holstein School District	29
School District Boundary Map	30
School District Parent Survey	31
Events and Program Participation	32
Current Bicycle and Pedestrian Network	33
City of New Holstein Bicycle and Pedestrian Recommendations	34
New Holstein Elementary School Educational Recommendations	36
New Holstein Middle School Educational Recommendations	38
Stockbridge School District	40
School District Boundary Map	41
School District Parent Survey	42
Events and Program Participation	43
Current Bicycle and Pedestrian Network	44
Village of Stockbridge Bicycle and Pedestrian Recommendations	46
Stockbridge School Educational Recommendations	47

The 6 E's of Safe Routes to School

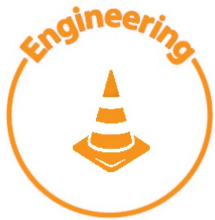
Comprehensive Safe Routes to School initiatives have been shown to be more effective at increasing bicycling and walking to school and reducing injuries. The Regional Safe Routes to School program is based on these principals of the six E's.



Education— Providing students and the community with the skills to walk and bicycle safely, educating them about the benefits of walking and bicycling, and teaching them about the broad range of transportation choices.



Encouragement— Generating enthusiasm and increased walking and bicycling for students through events, activities, and programs.



Engineering— Creating physical improvements to streets and neighborhoods that make walking and bicycling safer, more comfortable, and more convenient.



Enforcement— Deterring unsafe traffic behaviors and encouraging safe habits by people walking, bicycling, and driving in school zones, school neighborhoods, and along school routes.



Evaluation— Assessing which approaches are more or less successful, ensuring that programs and initiatives are supporting equitable outcomes, and identifying unintended consequences or opportunities to improve the effectiveness of each approach. Events and programs will be evaluated on a regular basis.

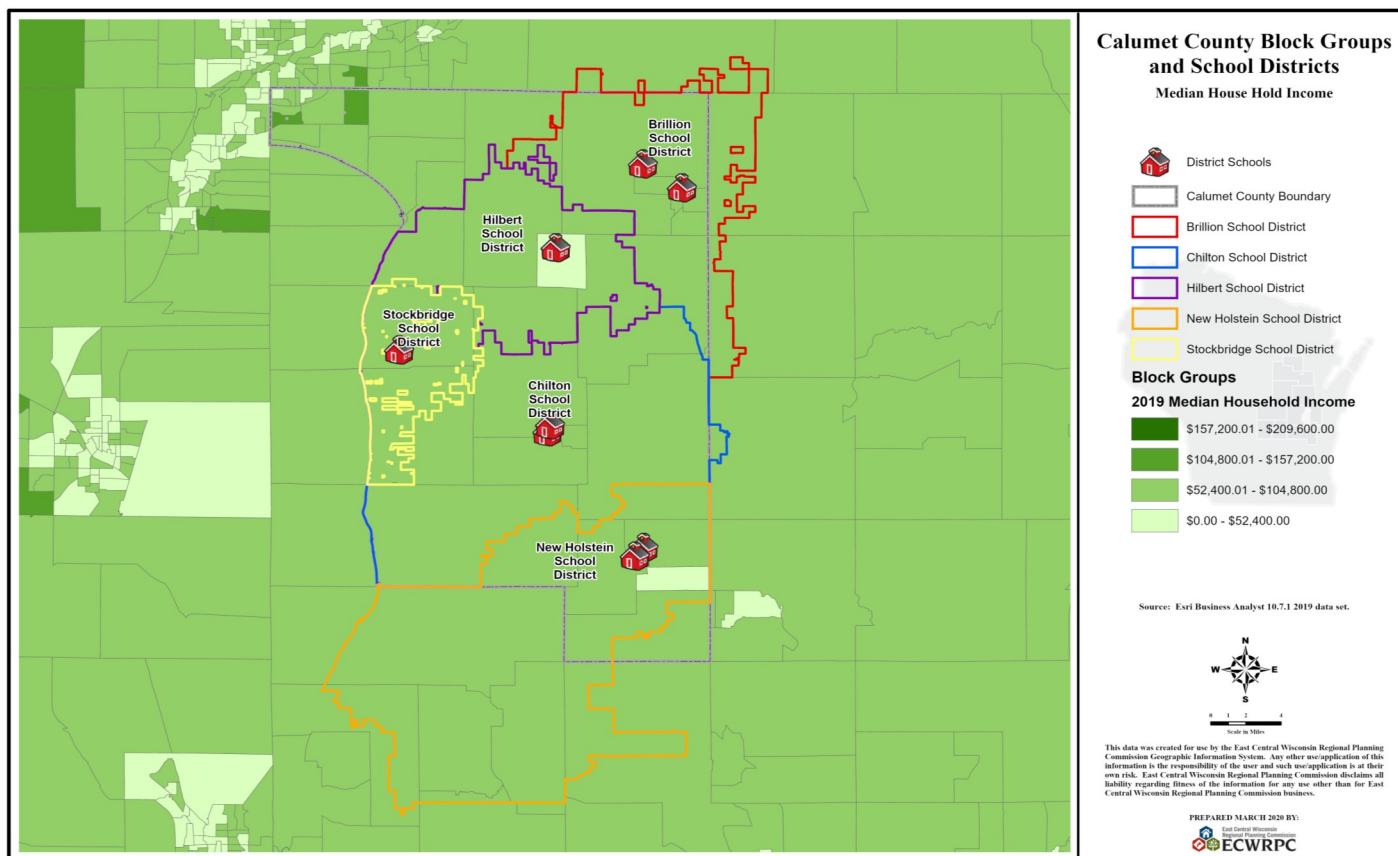


Equity— Ensuring that Safe Routes to School initiatives are benefiting all demographic groups, with particular attention to ensuring safe, healthy, and fair outcomes for low-income students, students of color, students of all genders, students with disabilities, and others.

Calumet County Equity Analysis

The Safe Routes to School Equity Analysis identifies school districts and block groups that would benefit from additional resources to promote safe walking and bicycling. A block group is a geographical unit used by the U.S. Census Bureau; it is the smallest geographical unit measured, and data is only collected from some of the households.¹ Median household income data can be used to identify block groups where more children are walking and bicycling because we know that children from low-income families are twice as likely to walk to school as children from higher-income families and will face greater risks.² A low-income family is generally defined as one in which the family income is no more than twice the federal poverty limit. The 2020 poverty limit is \$26,200 for a family of four, which means a low-income family of four makes \$52,400 or less.³

Median household income was collected by block groups for Brillion School District, Chilton School District, Hilbert School District, New Holstein School District, and Stockbridge School District. The map below displays the data based on median household income by school district. Hilbert School District and New Holstein School District both have a block group that falls within the low-income category. Parent surveys and student travel tallies should be utilized in these school district to learn more information on who is walking and bicycling to school and the safety concerns those students are experiencing. This information can be used to improve safety and provide an equitable walking and bicycling experience for students.



1 <https://www2.census.gov/geo/pdfs/reference/GARM/Ch11GARM.pdf>
2 <https://www.saferoutespartnership.org/sites/default/files/pdf/LowIncomeGuide.pdf>
3 <https://aspe.hhs.gov/poverty-guidelines>

Safe Routes to School Background Information

The East Central Wisconsin Regional Safe Routes to School (SRTS) Program focuses on engaging and empowering schools and communities to foster healthy lifestyles through environmental changes and safe walking and bicycling. By working to make it safer and more appealing for students in grades K-8 to walk and bike to school, the Regional SRTS Program is continually making strides to improve childhood health, reduce traffic congestion and pollution, and create more livable communities.

Brillion School District Background Information

This Action Plan identifies current transportation behaviors within the Brillion School District. It lists known walking, bicycling, and driving barriers, and it identifies potential engineering and programmatic strategies to address those barriers. This Action Plan is available for use by the City of Brillion, Town of Brillion, Town of Woodville, Town of Rantoul, parents, students, and community members to guide the communities work on Safe Routes to School.

Brillion Public Schools was established February 4th, 1892, by voter-approved resolution to establish and maintain a free high school district to serve the educational needs of K-12 students. The District has served the City of Brillion and surrounding rural communities in Calumet, Manitowoc, and Brown Counties for nearly 125 years. Currently, the district enrollment is 962 students in grades 4k through grade 12, plus early childhood services.



Elementary and Middle School Students Served



Private Schools



Elementary School



Middle School

Brillion School District Transportation Policies

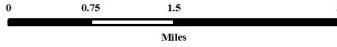
The District will meet its legal obligations to provide mandated student transportation services to public school students and private school students using the methods that the District deems most appropriate to the particular circumstances. To the extent consistent with applicable law and Board policy, the District may provide student transportation services by contracting with third-party entities, or by using District employees, contracts with parents, or other lawful methods. At this time, the District neither owns nor leases any school busses, and no District employee operates a school bus as part of his/her regular duties. Accordingly, all student transportation via school bus involves a contracted service provider.

School District Boundaries and Locations

Brillion Area School District



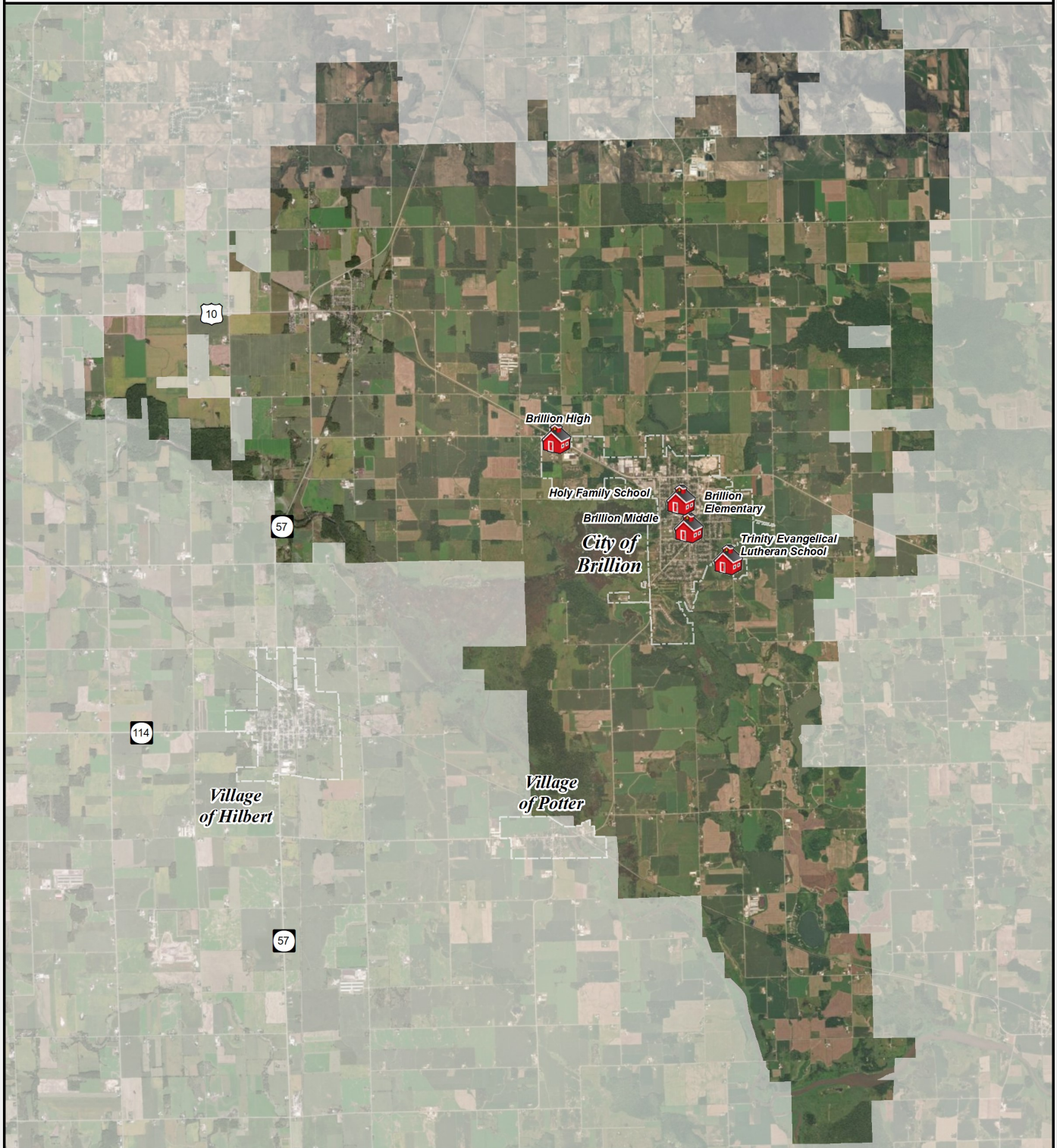
School Location



Source:
Base data provided by Calumet County 2018.
SRTS data provided by ECWRPC 2019.

This data was created for use by the East Central Wisconsin Regional Planning Commission Geographic Information System. Any other use or application of this information is the responsibility of the user and such use/application is at their own risk. East Central Wisconsin Regional Planning Commission disclaims all liability regarding fitness of the information for any use other than for East Central Wisconsin Regional Planning Commission business.

PREPARED JANUARY 2020 BY:



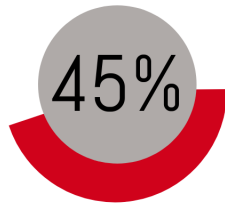


Brillion Area School District Parent Survey Results

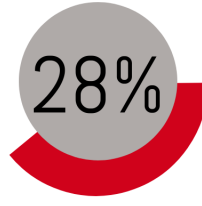
Total Number of Surveys: 102

Top 5 Reasons Parents ALLOW Their Child to Walk or Bike to School	Top 5 Reasons Parents DO NOT ALLOW Their Child to Walk or Bike to School	Top 5 Modes of Transportation Students Use to Get to School
1) Weather 2) Distance 3) Convenience 4) Sidewalk & Trails 5) Time	1) Safety 2) Distance 3) Vehicle Speed 4) High Traffic Volume 5) No Adults	1) Family Vehicle 2) School Bus 3) Walk 4) Bike 5) Other

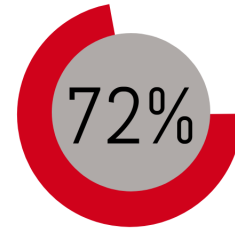
Student Transportation



Driven to School



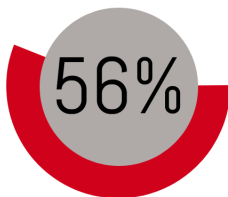
Use School Bus



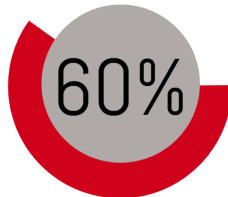
Total Vehicular



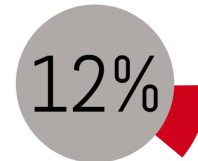
Student Transportation Alternatives



Students allowed to walk & bike to school



Believe their child needs walking or bicycling safety training



Percent of students walking & biking to school

Event and Program Participation

Brillion School District	Events			Programs				2020
	Walk to School Day	Winter Walk to School Month	Bike to School Day	Walking School Bus Program	Frequent Walker Program	Youth Engagement Program	Project RADAR Program	
Brillion Elementary School	X	X	X					
Brillion Middle School	X		X		X			



Walk to School Day– A global event that involves communities from more than 40 countries walking and bicycling to school on the same day. This event occurs annually on the first Wednesday in October.



Bike to School Day– Focuses on increasing bicycle safety and encourages students to bicycle to school. Bike to School Day typically falls on the second Wednesday in May.



Winter Walk to School Month– Is held in February and promotes walking to school year-round, even during the cold Wisconsin Winters.



Walking School Bus Program– Is a group of children who walk to school together under the supervision of a trained route leader.



Frequent Walker Program– Is a walking at school program and it encourages students to walk before, during, and after school by making it fun and rewarding.



Youth Engagement– Empowers elementary and middle school students, leaders, teachers, and adult facilitators by providing knowledge and resources to help lead activities and events that support active transportation.

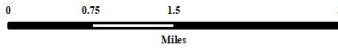


Project RADAR– Creates awareness about safe driving habits around school zones by developing educational materials utilizing radar velocity speed guns.

Bicycle & Pedestrian Network

Brillion Area School District

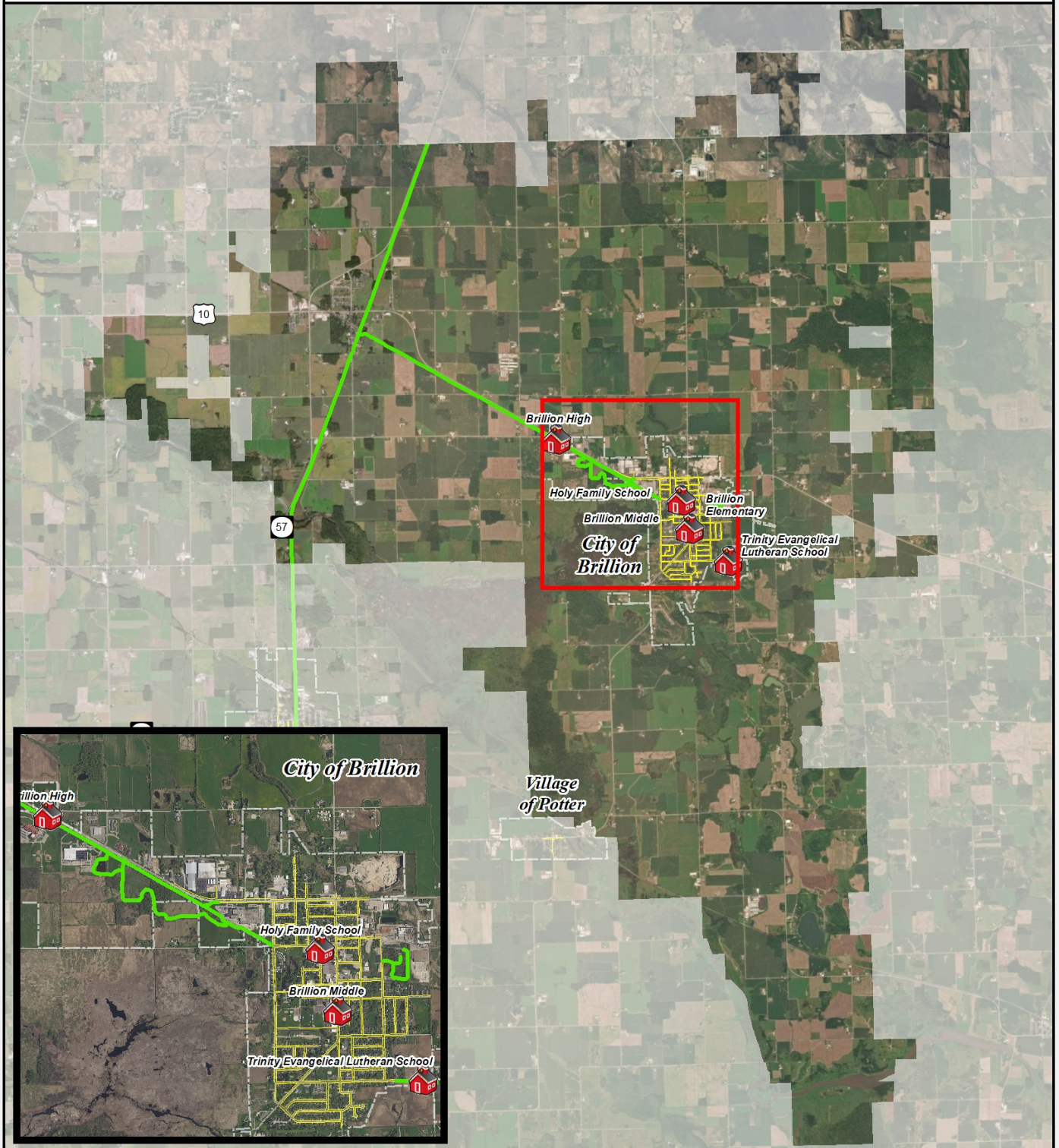
-  School Location
-  Off Road Multi Use Path
-  Bicycle Lane
-  Sidewalk



Source:
Base data provided by Calumet County 2018.
SRTS data provided by ECWRPC 2019.

This data was created for use by the East Central Wisconsin Regional Planning Commission Geographic Information System. Any other use application of this information is the responsibility of the user and such use application is at their own risk. East Central Wisconsin Regional Planning Commission disclaims all liability regarding fitness of the information for any use other than for East Central Wisconsin Regional Planning Commission business.

PREPARED JANUARY 2020 BY:





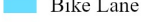

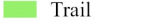
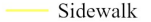



Bicycle & Pedestrian Recommendations

City of Brillion					
Road Name	From	To	Recommended Facility	Responsible Organization	Schools Impacted
S Glenview Avenue	National Avenue	County HWY PP	Continue sidewalk	City of Brillion	Brillion Elementary School, Brillion Middle School
Horn Street	Mary Street	Kennedy Drive	Sidewalk and Crosswalk	City of Brillion	Brillion Elementary School, Brillion Middle School
County Road PP	Horn Street	Valley View Drive	Bike Lane	Calumet County and City of Brillion	Brillion Elementary School, Brillion Middle School
County Road PP	Valley View Drive	Ridgeway Drive	Trail/Paved Shoulder	Calumet County and City of Brillion	Brillion Elementary School, Brillion Middle School

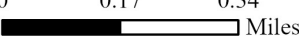
Bicycle & Pedestrian Facility Recommendations

City of Brillion

-  School Locations
 -  Pedestrian Sign
 -  School Zone Sign
- | Existing | Recommendations |
|---|---|
|  Bike Lane |  Bike Lane |
|  Trail |  Trail |
|  Sidewalk |  Sidewalk |

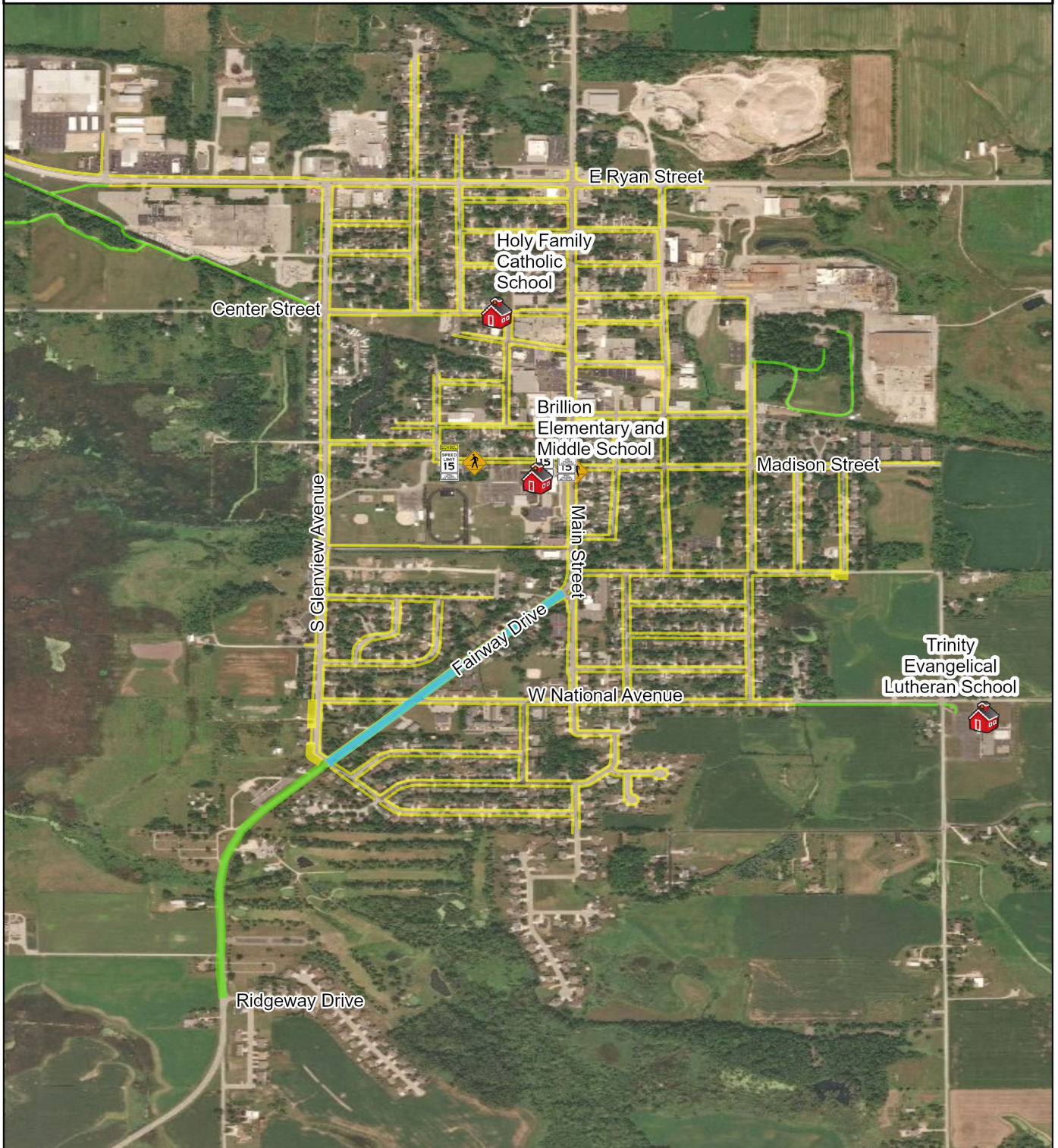


0 0.17 0.34 Miles



Source:
Bike and Pedestrian data by ECWRPC 2019.
SRTS data provided by ECWRPC 2019.
This data was created for use by the East Central Wisconsin Regional Planning Commission Geographic Information System. Any other use application of this information is the responsibility of the user and such use/application is at their own risk. East Central Wisconsin Regional Planning Commission disclaims all liability regarding fitness of the information for any use other than for East Central Wisconsin Regional Planning Commission business.

PREPARED JUNE 2020 BY:



Brillion Elementary and Middle School Action Plan

Education & Encouragement

1. Participate in Walk to School Day, Winter Walk to School Day, and Bike to School Day to encourage students to walk and bicycle to school.
2. Participate in the Walking School Bus program to encourage students to walk to school and the Frequent Walker program to encourage students to walk at school.
3. Participate in Safe Routes to School educational campaigns to educate parents and community members about safe driving, walking, and biking in the school district and throughout the Chilton community.

Engineering

1. Replace the pedestrian sign on the corner of South Main Street and Madison Street because it is not Manual of Uniform Traffic Control Devices (MUTCD) compliant.
2. Eliminate parking between the entry and exit of the school's parking lot on the south side of South Washington Street to reduce congestion and improve visibility.
3. Limit or eliminate parking on the north side of South Washington Street to reduce congestion during pick-up and drop-off times.
4. Extend the sidewalk on the south side of South Washington Street to connect to the west side of Elm Street.
5. Trim the bushes on the property adjacent to Dutch Way to improve visibility of students walking and biking.

Current Event and Program Participation

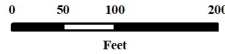


Brillion Elementary & Middle School

Bicycle & Walk Audit

Legend

-  Crossing Guard
-  Pedestrian Sign
-  School Zone Sign
-  Bike Rack
-  Parent Pick Up & Drop Off
-  Bus Loading Zone
-  General Parking
-  Staff Parking
-  No Parking



Source:
Base data provided by Calumet County 2014.
SRTS data provided by ECWRPC 2017.

This data was created for use by the East Central Wisconsin Regional Planning Commission Geographic Information System. Any other use/application of this information is the responsibility of the user and such use/application is at their own risk. East Central Wisconsin Regional Planning Commission disclaims all liability regarding fitness of the information for any use other than for East Central Wisconsin Regional Planning Commission business.

PREPARED JUNE 2020 BY:



Safe Routes to School Background Information

The East Central Wisconsin Regional Safe Routes to School (SRTS) Program focuses on engaging and empowering schools and communities to foster healthy lifestyles through environmental changes and safe walking and bicycling. By working to make it safer and more appealing for students in grades K-8 to walk and bike to school, the Regional SRTS Program is continually making strides to improve childhood health, reduce traffic congestion and pollution, and create more livable communities.

Chilton School District Background Information

This Action Plan identifies current transportation behaviors within the Chilton School District. It lists known walking, bicycling, and driving barriers, and it identifies potential engineering and programmatic strategies to address those barriers. This Action Plan is available for use by the City of Chilton, Town of Chilton, Town of Brothertown, Town of Charlestown, Town of Stockbridge, and Town of New Holstein, parents, students, and community members to guide the communities work on Safe Routes to School.

Chilton Public School District is a K-12 district with an average enrollment of approximately 1,200 students. The district is composed of three public schools– Chilton High School, Chilton Middle School, and Chilton Elementary School. All public school facilities are located on a hundred acre tract of land located at the south end of the City of Chilton on State Hwy 151.



Elementary and Middle School Students Served



Private School



Elementary School



Middle School

Chilton School District Transportation Policies

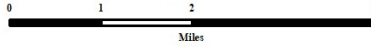
According to Section 121.54(2), Wisconsin Statutes, a pupil attending a public elementary or secondary school, including kindergarten, is entitled to transportation by the public school district in which the pupil resides if the pupil resides two or more miles from the nearest public school the pupil is entitled to attend. In addition, Section 121.54 (1), Wis. Stats., provides that districts are not required to transport pupils who reside in the same city as the school they attend unless the pick up point is deemed hazardous for stopping the bus or for foot traffic. Chilton Public School District provides bus transportation for students meeting the state defined criteria for distance, city residence and unusually hazardous transportation areas. Students will ride only assigned school buses and will board and depart from the bus at assigned bus stops. Students will not be permitted to ride unassigned buses for any reason other than an emergency or prearranged change approved by the principal.

School District Boundaries and Locations

Chilton Area School District



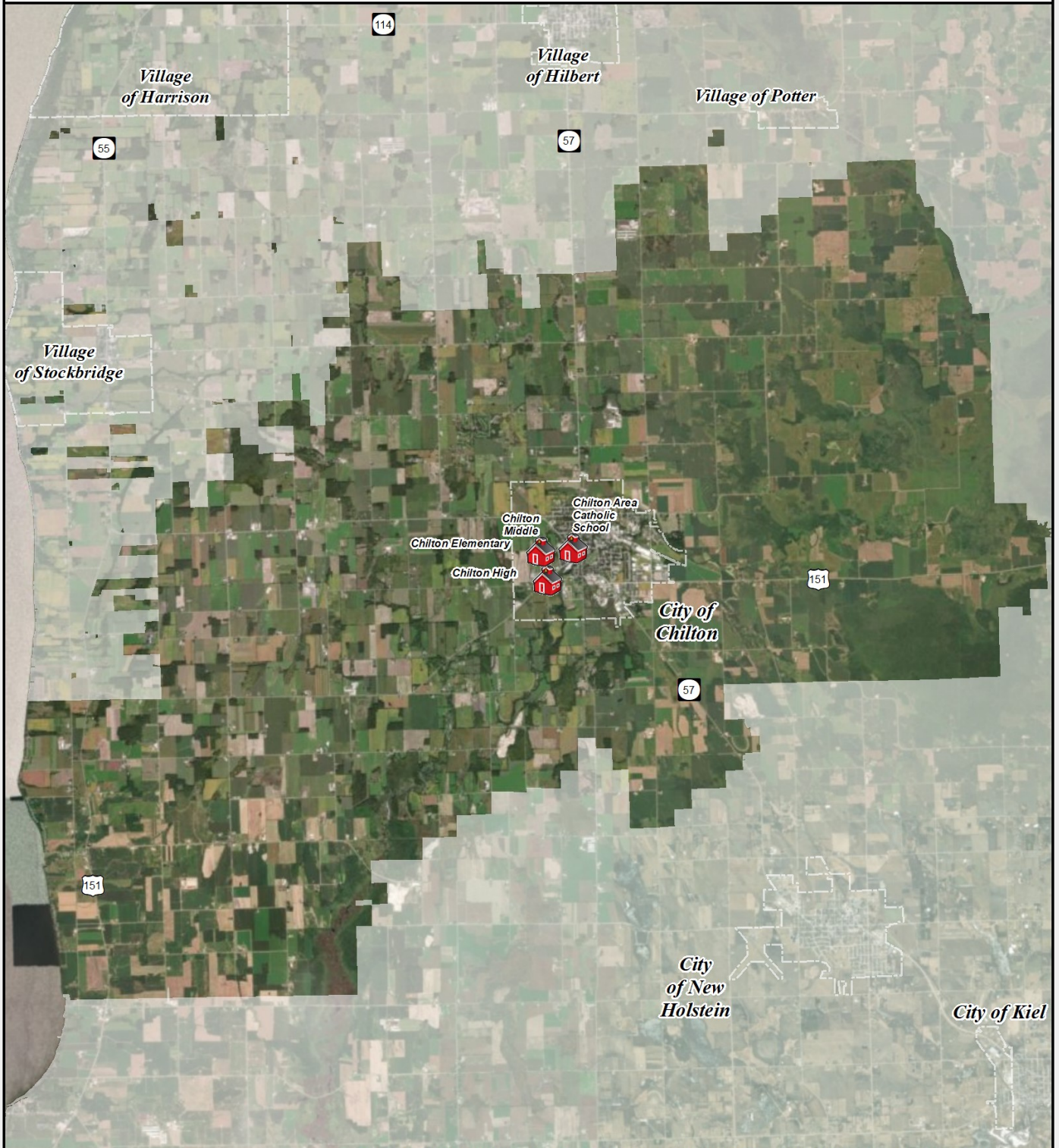
School Location



Source:
Base data provided by Calumet County 2018.
SRTS data provided by ECWRPC 2019.

This data was created for use by the East Central Wisconsin Regional Planning Commission Geographic Information System. Any other use/application of this information is the responsibility of the user and such use/application is at their own risk. East Central Wisconsin Regional Planning Commission disclaims all liability regarding fitness of the information for any use other than for East Central Wisconsin Regional Planning Commission business.

PREPARED JANUARY 2020 BY:



Event and Program Participation

Chilton School District	Events				Programs			
	Walk to School Day	Winter Walk to School Month	Bike to School Day	Walking School Bus Program	Frequent Walker Program	Youth Engagement Program	Project RADAR Program	
Chilton Middle School								
Chilton Elementary School			X					



Walk to School Day— A global event that involves communities from more than 40 countries walking and bicycling to school on the same day. This event occurs annually on the first Wednesday in October.



Bike to School Day— Focuses on increasing bicycle safety and encourages students to bicycle to school. Bike to School Day typically falls on the second Wednesday in May.



Winter Walk to School Month— Is held in February and promotes walking to school year-round, even during the cold Wisconsin Winters.



Walking School Bus Program— Is a group of children who walk to school together under the supervision of a trained route leader.



Frequent Walker Program— Is a walking at school program and it encourages students to walk before, during, and after school by making it fun and rewarding.



Youth Engagement— Empowers elementary and middle school students, leaders, teachers, and adult facilitators by providing knowledge and resources to help lead activities and events that support active transportation.

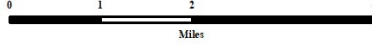


Project RADAR— Creates awareness about safe driving habits around school zones by developing educational materials utilizing radar velocity speed guns.

Bicycle & Pedestrian Network

Chilton Area School District

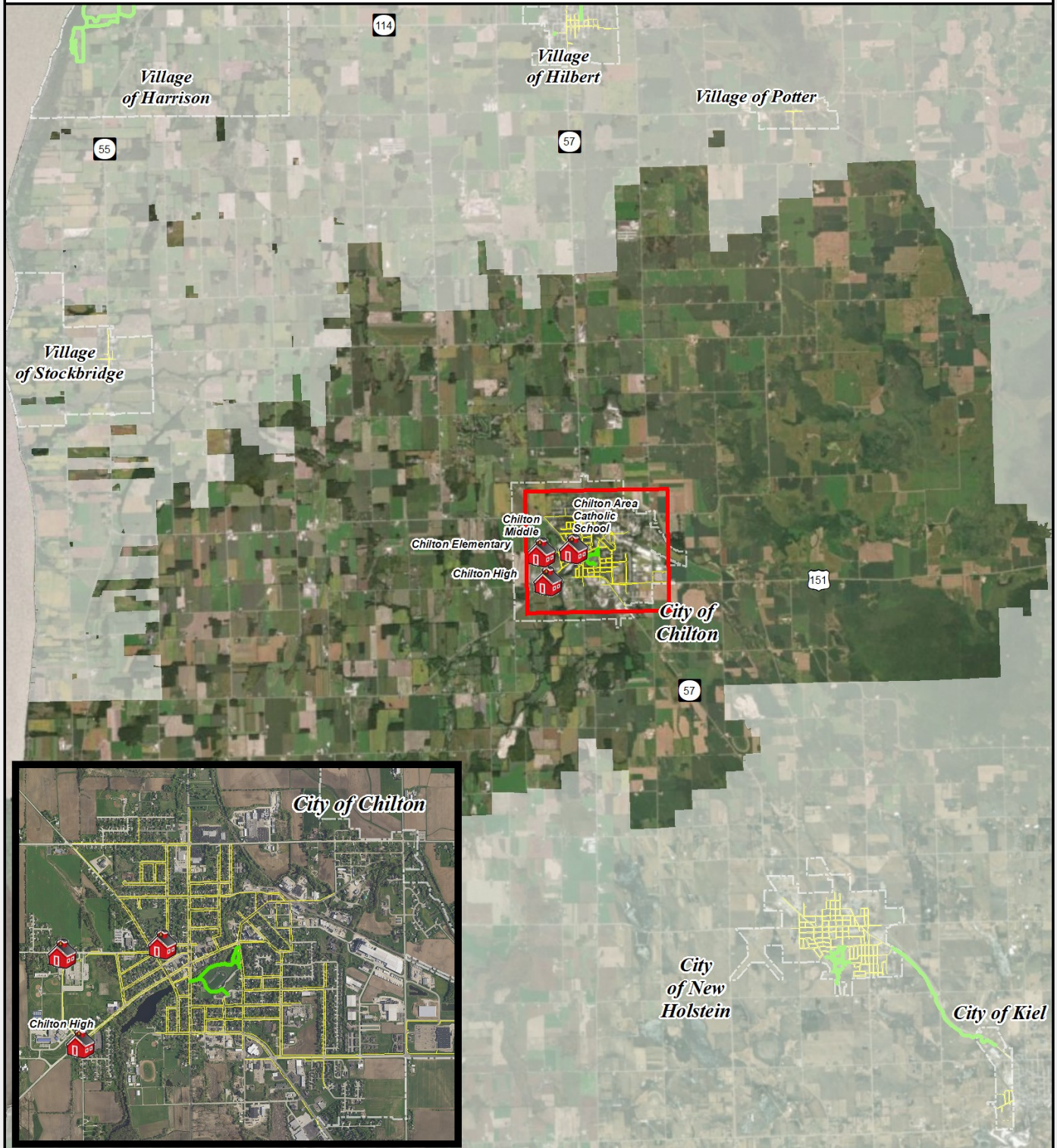
-  School Location
-  Off Road Multi Use Path
-  Bicycle Lane
-  Sidewalk



Source:
Base data provided by Calumet County 2018.
SRTS data provided by ECWRPC 2019.

This data was created for use by the East Central Wisconsin Regional Planning Commission Geographic Information Systems. Any other use/application of this information is the responsibility of the user and such use/application is at their own risk. East Central Wisconsin Regional Planning Commission disclaims all liability regarding fitness of the information for any use other than for East Central Wisconsin Regional Planning Commission business.

PREPARED JANUARY 2020 BY:



Bicycle & Pedestrian Recommendations

City of Chilton					
Road Name	From	To	Recommended Facility	Responsible Organization	Schools Impacted
Court Street	Kieser Drive	Heimann Street	Continue sidewalk on both sides and add a bike lane	City of Chilton	Chilton Elementary School, Chilton Middle School, Chilton Area Catholic School
N State Street (County Road F)	Grand Street	Court Street	Continue sidewalk on both sides and add a crosswalk on W Grant St	Calumet County and City of Chilton	Chilton Elementary School, Chilton Middle School, Chilton Area Catholic School
School Street	Heimann Street	N State Street	Continue sidewalk on both sides	City of Chilton	Chilton Elementary School, Chilton Middle School, Chilton Area Catholic School

Bicycle & Pedestrian Facility Recommendations

City of Chilton

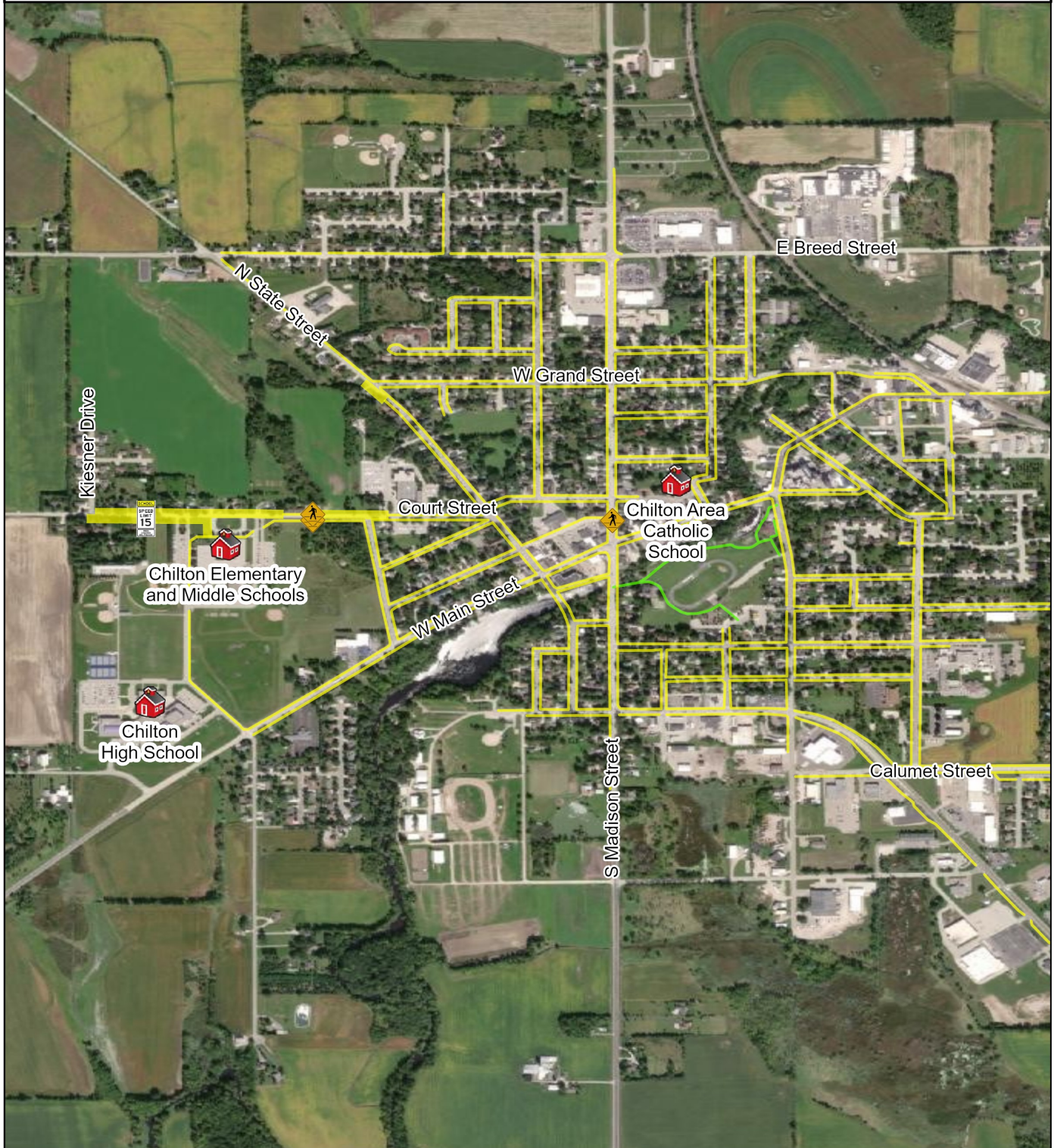
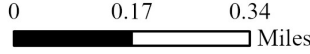
Source:
Bike and Pedestrian data by ECWRPC 2019.
SRTS data provided by ECWRPC 2019.
This data was created for use by the East Central Wisconsin
Regional Planning Commission's Geographic Information
System. Any other use/application of this information is the
responsibility of the user and such use/application is at their
own risk. East Central Wisconsin Regional Planning
Commission disclaims all liability regarding fitness of the
information for any use other than for East Central Wisconsin
Regional Planning Commission business.

PREPARED JULY 2020 BY:



- School Locations
- Pedestrian Sign
- School Zone Sign

- | Existing | Recommendations |
|-----------|-----------------|
| Bike Lane | Bike Lane |
| Trail | Trail |
| Sidewalk | Sidewalk |



P:\138x-Regional SRTS\1381_Regional Implementation\Local_SRTS_Coalitions\Calumet Co\2019 Action Plan Update\Bike and Pedestrian Analysis Mapping\CalumetCou
Source: Esri, Maxar, GeoEye, Earthstar Geographics, CNES/Airbus DS, USDA, USGS, AeroGRID, IGN, and the GIS User Community

Chilton Elementary and Middle School Action Plan

Education & Encouragement

1. Participate in one day events such as Walk to School Day, Winter Walk to School Month, or Bike to School Day to encourage students to walk and bicycle to school.
2. Participate in the Walking School Bus Program to encourage students to walk to school and to reduce traffic congestion during pick-up and drop-off times. The students could meet at Leahy-Lions Park and walk to Chilton Elementary and Middle Schools.
3. Participate in Safe Routes to School educational campaigns to educate parents and community members about safe driving, walking, and biking in the school district and throughout the Chilton community.

Engineering

1. Update all of the pedestrian signage on Court Street to be Manual on Uniform Traffic Control Devices (MUTCD) compliant.
2. Make the crosswalks near the parking lot ADA compliant by adding detectable warning surfaces.
3. Work with the City of Chilton and WisDOT to improve the State Street, Court Street, Jefferson Street, and Washington Street intersection. The crossings are currently not safe for students.

Enforcement

1. Enforce traffic speeds in school parking lots to make it safer for students walking and bicycling.

Evaluation

1. Evaluate the State Street, Court Street, Jefferson Street, and Washington Street intersection for safety improvements.

**Current Event and Program
Participation**



Chilton Elementary & Middle School

Bicycle & Walk Audit

Source:
Base data provided by Calumet County 2017.
SRTS data provided by ECWRPC 2019.

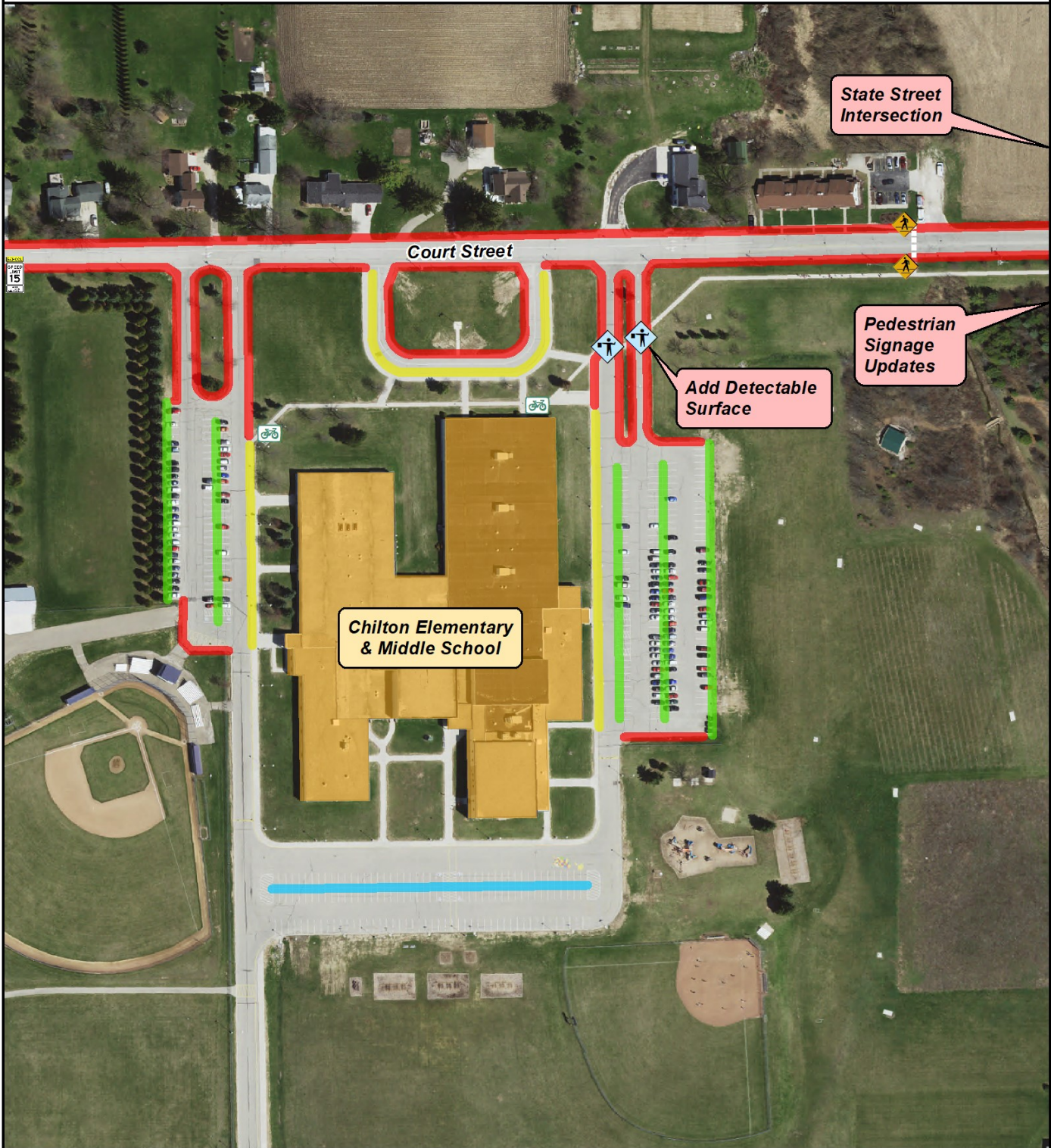
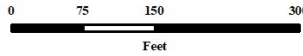
This data was created for use by the East Central Wisconsin Regional Planning Commission Geographic Information System. Any other use application of this information is the responsibility of the user and such use/application is at their own risk. East Central Wisconsin Regional Planning Commission disclaims all liability regarding fitness of the information for any use other than for East Central Wisconsin Regional Planning Commission business.

PREPARED OCTOBER 2019 BY:



Legend

- Crossing Guard
- Pedestrian Sign
- School Zone Sign
- Bike Rack
- Parent Pick Up & Drop Off
- Bus Loading Zone
- General Parking
- Staff Parking
- No Parking



Safe Routes to School Background Information

The East Central Wisconsin Regional Safe Routes to School (SRTS) Program focuses on engaging and empowering schools and communities to foster healthy lifestyles through environmental changes and safe walking and bicycling. By working to make it safer and more appealing for students in grades K-8 to walk and bike to school, the Regional SRTS Program is continually making strides to improve childhood health, reduce traffic congestion and pollution, and create more livable communities.

Hilbert School District Background Information

This Action Plan identifies current transportation behaviors within the Hilbert School District. It lists known walking, bicycling, and driving barriers, and it identifies potential engineering and programmatic strategies to address those barriers. This Action Plan is available for use by the Village of Hilbert, Village of Sherwood, Village of Harrison, Village of Potter, Town of Hilbert, Town of Woodville, Town of Rantoul, Town of Chilton, parents, students, and community members to guide the communities work on Safe Routes to School.

In the Hilbert School District, their mission as educators is to prepare their students to be successful in the 21st Century by using “best practice” in education to engage students academically, physically, and socially. It is their priority to provide all students with a safe and positive learning environment.



Elementary and Middle School Students Served



Private Schools



Elementary School



Middle School

Hilbert School District Transportation Policies

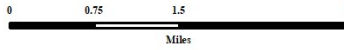
Transportation of eligible students with exceptional educational needs or attending a technical education program shall be arranged through the use of District-owned vehicles, through cooperation with other districts, through commercial carriers, and/or by other means in the most efficient and economical manner. Transportation privileges may be revoked if the student's conduct is in violation of the District Administrator's administrative guidelines or the Code of Conduct pertaining to student transportation. Such revocation shall be in accord with statutorily-required procedures.

School District Boundaries & Locations

Hilbert Area School District



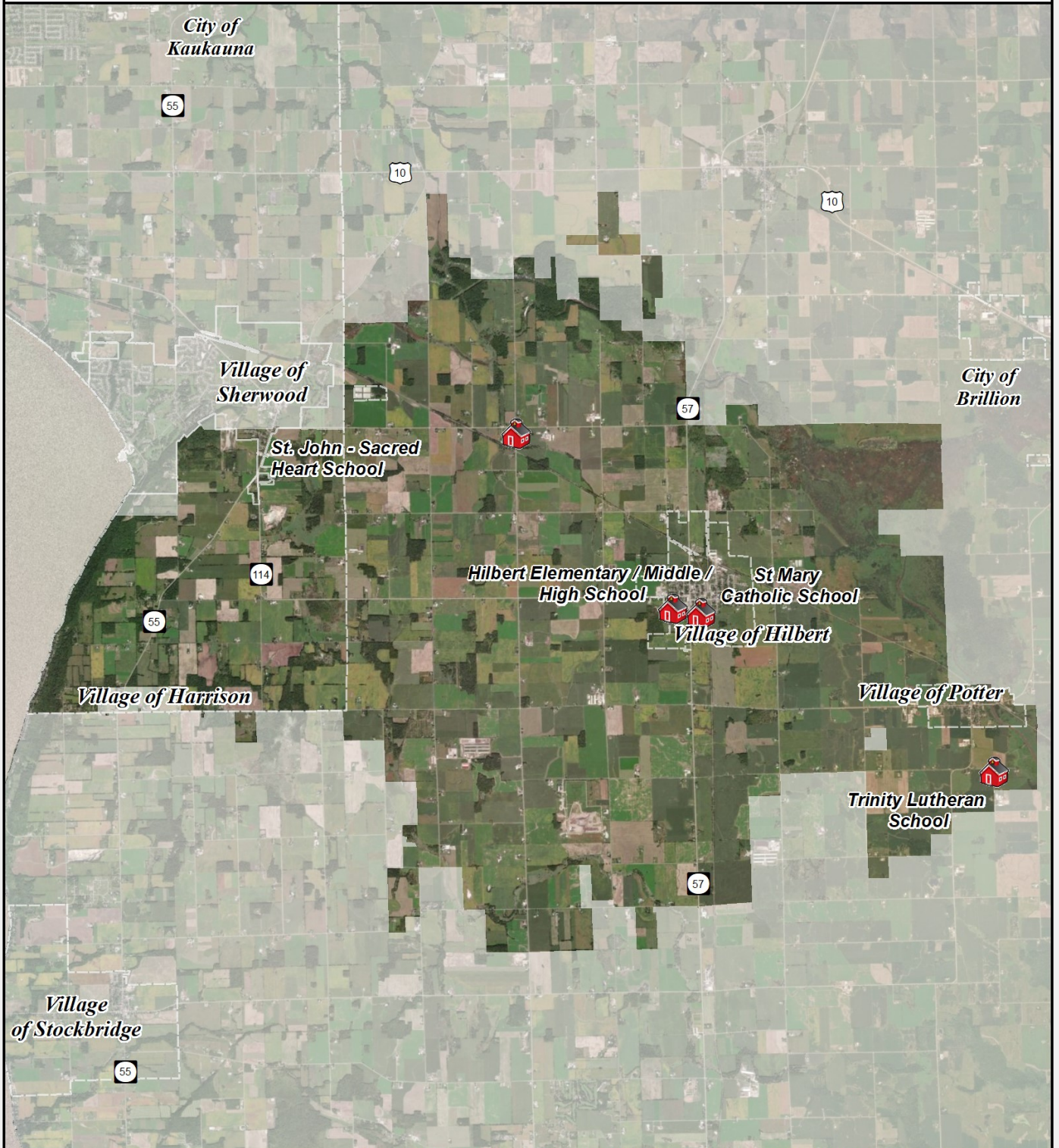
School Location



Source:
Base data provided by Calumet County 2018.
SRTS data provided by ECWRPC 2019.

This data was created for use by the East Central Wisconsin Regional Planning Commission Geographic Information Systems. Any other use/application of this information is the responsibility of the user and such use/application is at their own risk. East Central Wisconsin Regional Planning Commission disclaims all liability regarding fitness of the information for any use other than for East Central Wisconsin Regional Planning Commission business.

PREPARED JANUARY 2020 BY:





Hilbert School District

Parent Survey Results

Number of Surveys: 39

Top 5 Reasons Parents ALLOW Their Child to Walk or Bike to School

- 1) Sidewalks & Trails
- 2) Weather
- 3) Convenience
- 4) Crossing Guards
- 5) Safety of Crossings

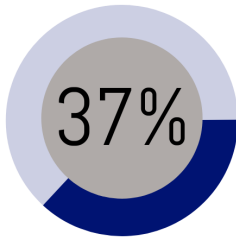
Top 5 Reasons Parents DO NOT ALLOW Their Child to Walk or Bike to School

- 1) Distance
- 2) Safety Concerns
- 3) Time
- 4) Traffic Speed
- 5) Traffic Volume

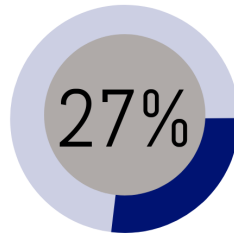
Top 5 Modes of Transportation Students Use to Get to School

- 1) Family Vehicle
- 2) School Bus
- 3) Walk
- 4) Bike
- 5) Other

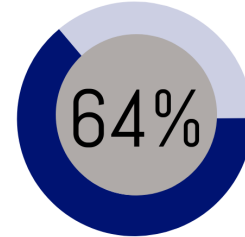
Student Transportation



Driven to School



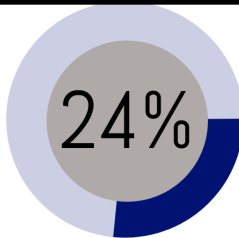
Use School Bus



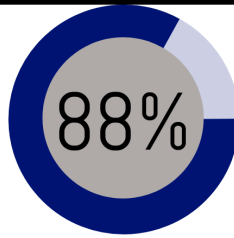
Total Vehicular



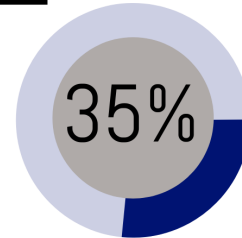
Student Transportation Alternatives



Students allowed to walk & bike to school



Believe their child needs walking or bicycling safety training



Percent of students walking & biking to school

Event and Program Participation

Hilbert School District	Events			Programs				2020
	Walk to School Day	Winter Walk to School Month	Bike to School Day	Walking School Bus Program	Frequent Walker Program	Youth Engagement Program	Project RADAR Program	
Hilbert Elementary School					X			
Hilbert Middle School								



Walk to School Day– A global event that involves communities from more than 40 countries walking and bicycling to school on the same day. This event occurs annually on the first Wednesday in October.



Bike to School Day– Focuses on increasing bicycle safety and encourages students to bicycle to school. Bike to School Day typically falls on the second Wednesday in May.



Winter Walk to School Month– Is held in February and promotes walking to school year-round, even during the cold Wisconsin Winters.



Walking School Bus Program– Is a group of children who walk to school together under the supervision of a trained route leader.



Frequent Walker Program– Is a walking at school program and it encourages students to walk before, during, and after school by making it fun and rewarding.



Youth Engagement– Empowers elementary and middle school students, leaders, teachers, and adult facilitators by providing knowledge and resources to help lead activities and events that support active transportation.



Project RADAR– Creates awareness about safe driving habits around school zones by developing educational materials utilizing radar velocity speed guns.

Bicycle & Pedestrian Network

Hilbert Area School District

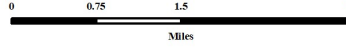


School Location

Off Road Multi Use Path

Bicycle Lane

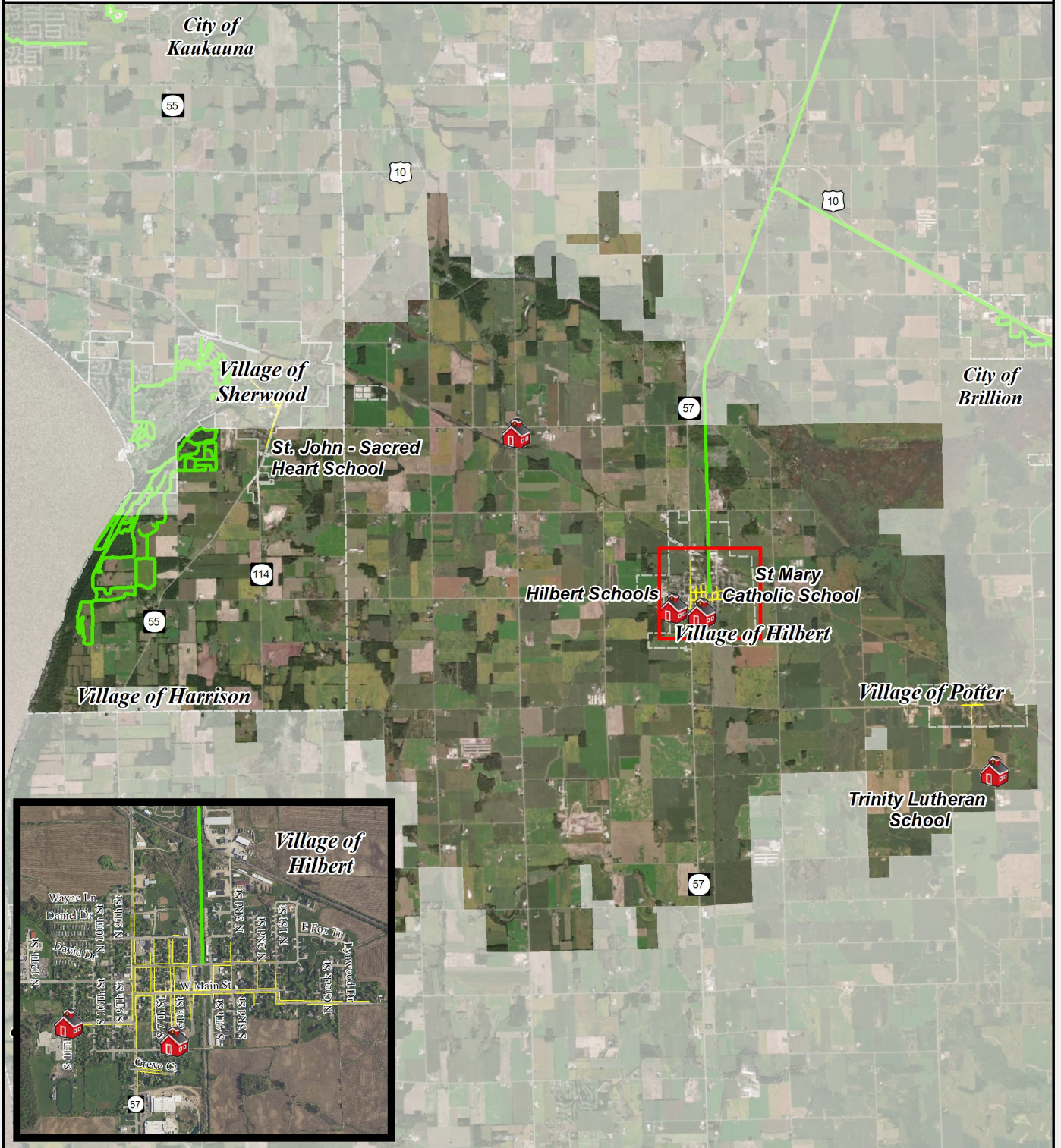
Sidewalk



Source:
Base data provided by Calumet County 2018.
SRTS data provided by ECWRPC 2019.




This data was created for use by the East Central Wisconsin Regional Planning Commission Geographic Information System. Any other use/application of this information is the responsibility of the user and such use/application is at their own risk. East Central Wisconsin Regional Planning Commission disclaims all liability regarding fitness of the information for any use other than for East Central Wisconsin Regional Planning Commission business.

PREPARED JANUARY 2020 BY:



Bicycle & Pedestrian Recommendations

Hilbert School District					
Road Name	From	To	Recommended Facility	Responsible Organization	Schools Impacted
N 8th Street (County Road 57)	Gehl Lane	W Chestnut Street	Complete sidewalk on the west side of the street	State, Calumet County, and Village of Hilbert	Hilbert Elementary, Middle, and High Schools; St. Mary Catholic School
W Calumet Street	S 10th Street	S 4th Street	Continue sidewalks on both sides	Village of Hilbert	Hilbert Elementary, Middle, and High Schools; St. Mary Catholic School
S 7th Street	W Main Street	W Calumet Street	Continue sidewalks on both sides	Village of Hilbert	Hilbert Elementary, Middle, and High Schools; St. Mary Catholic School
W Milwaukee Street	S 11th Street	S 8th Street	Continue sidewalks on both sides of the street	Village of Hilbert	Hilbert Elementary, Middle, and High Schools
W Milwaukee Street	S 11th Street	S 8th Street	Bike Lanes	Village of Hilbert	Hilbert Elementary, Middle, and High Schools
10th Street	W Chestnut Street	W Calumet Street	Sidewalks	Village of Hilbert	Hilbert Elementary, Middle, and High Schools; St. Mary Catholic School
N 9th Street	W Chestnut Street	W Calumet Street	Sidewalks	Village of Hilbert	Hilbert Elementary, Middle, and High Schools
W Chestnut Street	N 8th Street	N 5th Street	Sidewalk	Village of Hilbert	Hilbert Elementary, Middle, and High Schools
Develop a trail connecting the future subdivision development to the school.				Village of Hilbert	Hilbert Elementary, Middle, and High Schools

-  School Locations
-  Pedestrian Sign
-  School Zone Sign


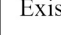




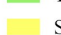
Bicycle & Pedestrian Facility Recommendations

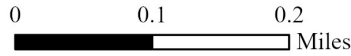
Village of Hilbert

Source:
Bike and Pedestrian data by ECWRPC 2019.
SRTS data provided by ECWRPC 2019.
This data was created for use by the East Central Wisconsin Regional Planning Commission Geographic Information System. Any other use/application of this information is the responsibility of the user and such use/application is at their own risk. East Central Wisconsin Regional Planning Commission disclaims all liability regarding fitness of the information for any use other than for East Central Wisconsin Regional Planning Commission business.

PREPARED JUNE 2020 BY:



- | | |
|---|---------------------------|
|  | Future Development |
|  | Existing Bike Lane |
|  | Recommendations Bike Lane |
|  | Existing Trail |
|  | Recommendations Trail |
|  | Existing Sidewalk |
|  | Recommendations Sidewalk |



Hilbert Elementary and Middle School Action Plan

Education & Encouragement

1. Participate in one day events such as Walk to School Day, Winter Walk to School Month, or Bike to School Day to encourage students to walk and bicycle to school.
2. Participate in Project RADAR to educate students and community members about driving safe and slowing down in school zones.
3. Participate in the Frequent Walker Program to encourage students to walk at school.
4. Implement bicycling into physical education curriculum to educate students on bike safety skills.
5. Participate in Safe Routes to School educational campaigns to educate parents and community members about safe driving, walking, and biking within the Hilbert School District

Engineering

1. Update school zone signs on Milwaukee Street to be Manual on Uniform Traffic Control Devices (MUTCD) compliant.
2. Update curb cuts at both intersections of South 8th Street and West Main Street to be ADA compliant. The curb cuts currently point into the middle of the road.

Enforcement

1. Enforce traffic speeds on West Main Street and on South 8th Street to make it safer for children walking and bicycling.

**Current Event and Program
Participation**

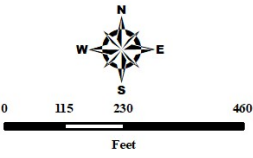


Hilbert School District

Bicycle & Walk Audit

Legend

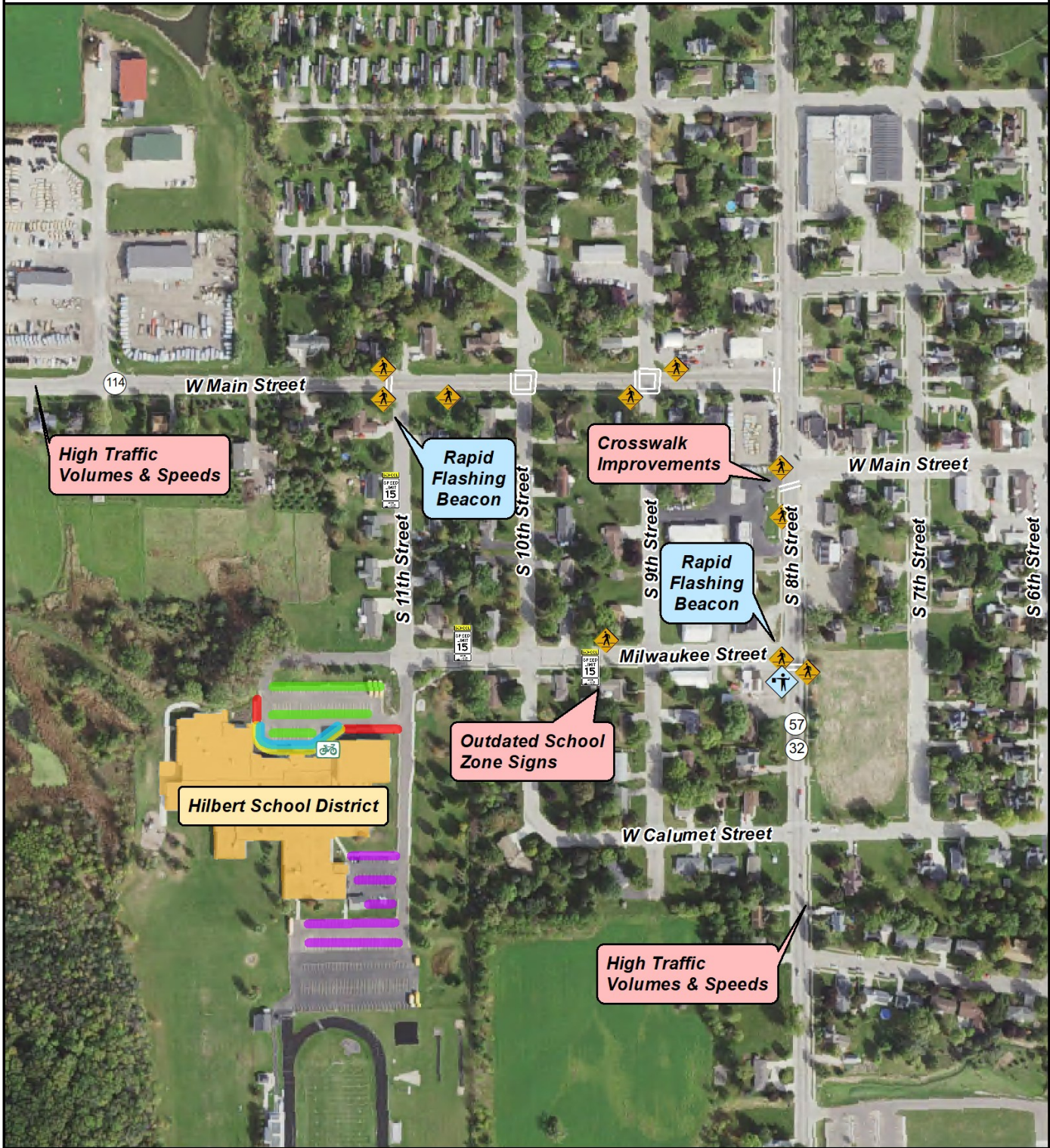
-  Crossing Guard
-  Pedestrian Sign
-  School Zone Sign
-  Bike Rack
-  Parent Pick Up & Drop Off
-  Bus Loading Zone
-  General Parking
-  Staff Parking
-  No Parking



Source:
Base data provided by Calumet County 2017.
SRTS data provided by ECWRPC 2019.

This data was created for use by the East Central Wisconsin Regional Planning Commission Geographic Information Systems. Any other use application of this information is the responsibility of the user and such use application is at their own risk. East Central Wisconsin Regional Planning Commission disclaims all liability regarding fitness of the information for any use other than for East Central Wisconsin Regional Planning Commission business.

PREPARED JULY 2020 BY:



Safe Routes to School Background Information

The East Central Wisconsin Regional Safe Routes to School (SRTS) Program focuses on engaging and empowering schools and communities to foster healthy lifestyles through environmental changes and safe walking and bicycling. By working to make it safer and more appealing for students in grades K-8 to walk and bike to school, the Regional SRTS Program is continually making strides to improve childhood health, reduce traffic congestion and pollution, and create more livable communities.

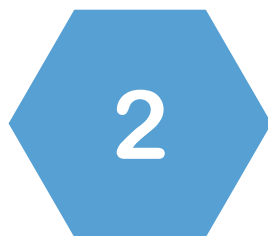
New Holstein School District Background Information

This Action Plan identifies current transportation behaviors within the New Holstein School District. It lists known walking, bicycling, and driving barriers, and it identifies potential engineering and programmatic strategies to address those barriers. This Action Plan is available for use by the City of New Holstein, Village of Mt. Calvary, Village of St. Cloud, Town of New Holstein, Town of Marshfield, Town of Taycheedah, Town of Calumet, Town of Brothertown, Town of Charlestown, parents, students, and community members to guide the communities work on Safe Routes to School.

The educational vision of the School of New Holstein is for all students to learn and develop the knowledge and skills necessary to become contributing global citizens in an ever-changing world through: Academically challenging curriculum, research based and data driven instructional practices, student input and ownership, real world applications, reflection and evaluation for continuous improvement, continuous, responsible use of all resources and evolving technology, community involvement, and expectation of appropriate behaviors that lead to successful, productive citizens.



Elementary and Middle School Students Served



Private Schools



Elementary School




Middle School

New Holstein School District Transportation Policies

Bus transportation will be provided for elementary school children living within a village (incorporated or unincorporated) or a city if the mileage exceeds one mile from dwelling door to school door. Children living outside a village limits or city limits less than two miles from dwelling door to school door will be transported if a safety factor exists .

School District Boundaries and Locations

New Holstein Area School District

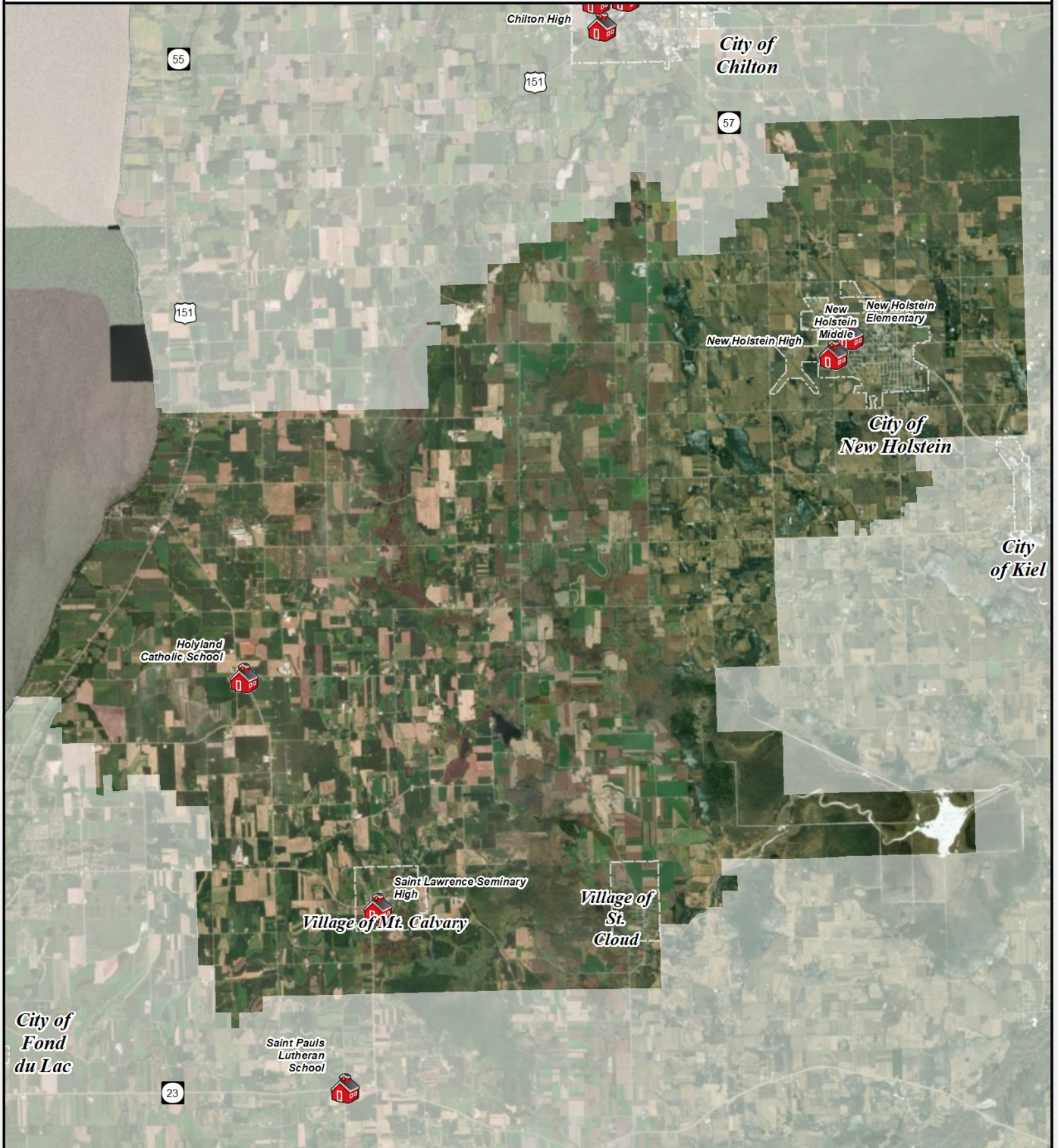
 School Location



Source:
Base data provided by Calumet County 2018.
SRTS data provided by ECWRPC 2019.

This data was created for use by the East Central Wisconsin Regional Planning Commission Geographic Information System. Any other use/application of this information is the responsibility of the user and such use/application is at their own risk. East Central Wisconsin Regional Planning Commission disclaims all liability regarding fitness of the information for any use other than for East Central Wisconsin Regional Planning Commission business.

PREPARED JANUARY 2020 BY:





New Holstein School District

Parent Survey Results

Number of Surveys: 80

Top 5 Reasons Parents ALLOW Their Child to Walk or Bike to School

- 1) Distance
- 2) Weather
- 3) Convenience
- 4) Sidewalk & Trails
- 5) Time

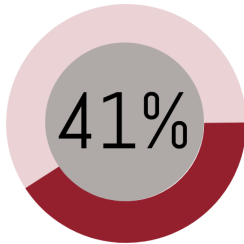
Top 5 Reasons Parents DO NOT ALLOW Their Child to Walk or Bike to School

- 1) Distance
- 2) Safety Concerns
- 3) Weather
- 4) Traffic Speed
- 5) Time

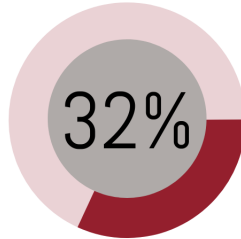
Top 5 Modes of Transportation Students Use to Get to School

- 1) Family Vehicle
- 2) School Bus
- 3) Walk
- 4) Bike
- 5) Other

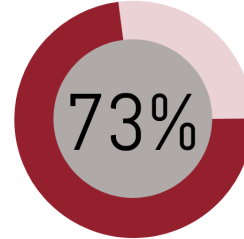
Student Transportation



Driven to School



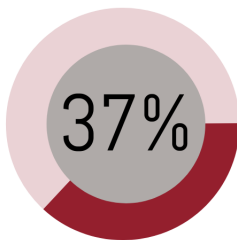
Use School Bus



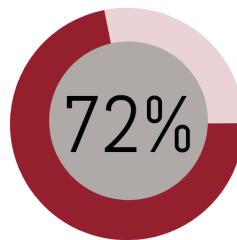
Total Vehicular



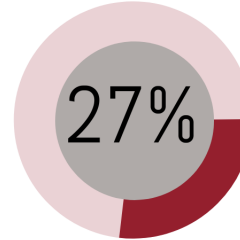
Student Transportation Alternatives



Students allowed to walk & bike to school



Believe their child needs walking or bicycling safety training



Percent of students walking & biking to school

Event and Program Participation

New Holstein School District	Events			Programs				2020
	Walk to School Day	Winter Walk to School Month	Bike to School Day	Walking School Bus Program	Frequent Walker Program	Youth Engagement Program	Project RADAR Program	
New Holstein Elementary School	X		X		X			
New Holstein Middle School			X					



Walk to School Day– A global event that involves communities from more than 40 countries walking and bicycling to school on the same day. This event occurs annually on the first Wednesday in October.



Bike to School Day– Focuses on increasing bicycle safety and encourages students to bicycle to school. Bike to School Day typically falls on the second Wednesday in May.



Winter Walk to School Month– Is held in February and promotes walking to school year-round, even during the cold Wisconsin Winters.



Walking School Bus Program– Is a group of children who walk to school together under the supervision of a trained route leader.



Frequent Walker Program– Is a walking at school program and it encourages students to walk before, during, and after school by making it fun and rewarding.



Youth Engagement– Empowers elementary and middle school students, leaders, teachers, and adult facilitators by providing knowledge and resources to help lead activities and events that support active transportation.



Project RADAR– Creates awareness about safe driving habits around school zones by developing educational materials utilizing radar velocity speed guns.

Bicycle & Pedestrian Network

New Holstein Area School District

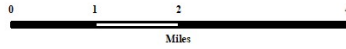


School Location

Off Road Multi Use Path

Bicycle Lane

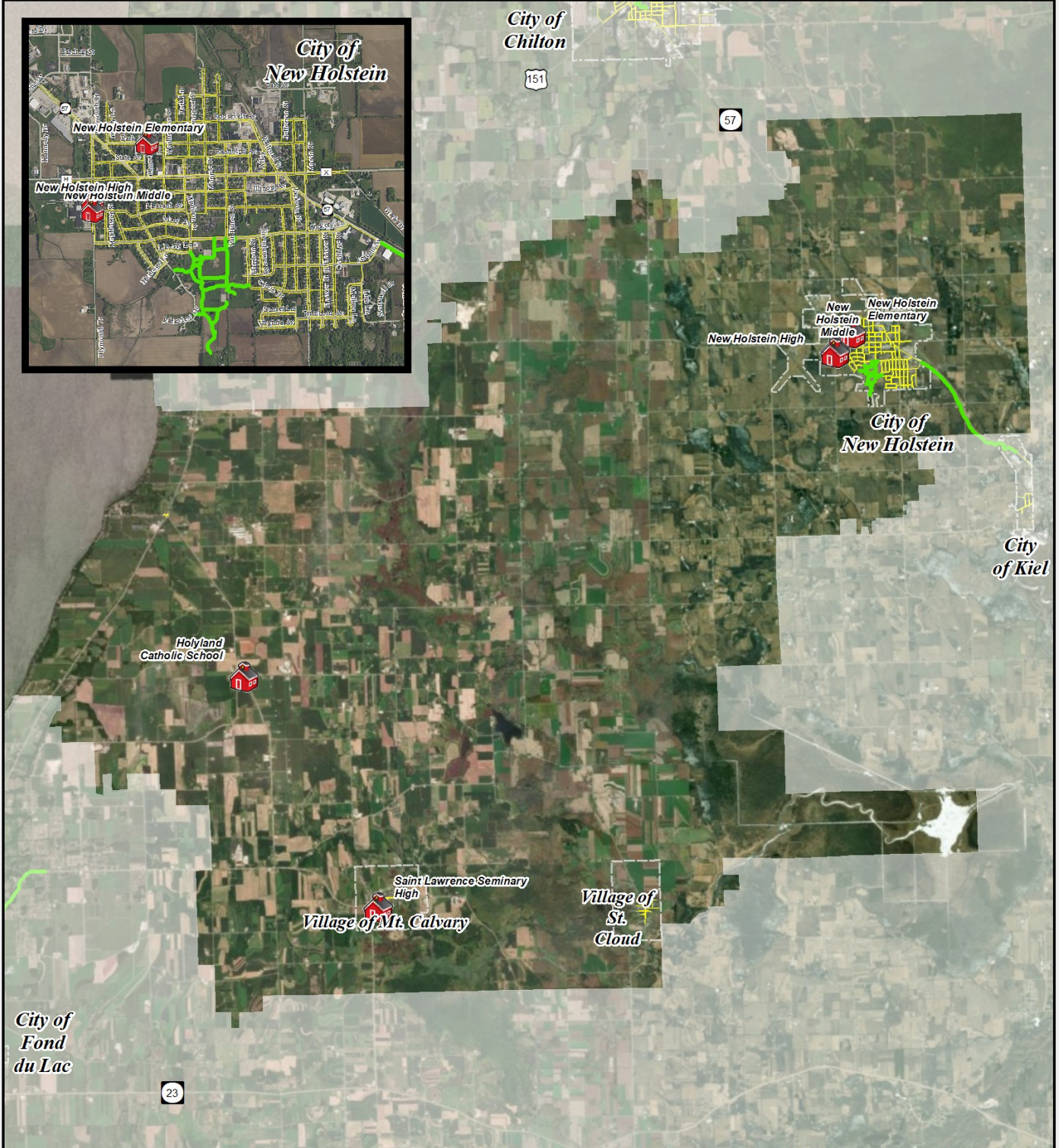
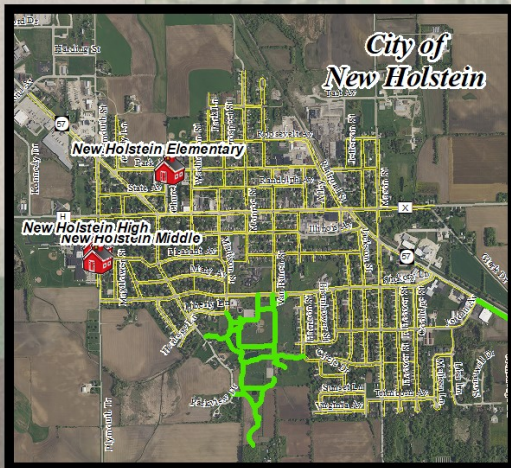
Sidewalk



Source:
Base data provided by Calumet County 2018.
SRTS data provided by ECRWPC 2019.

This data was created for use by the East Central Wisconsin Regional Planning Commission Geographic Information System. Any other use/application of this information is the responsibility of the user and such use application is at their own risk. East Central Wisconsin Regional Planning Commission disclaims all liability regarding fitness of the information for any use other than for East Central Wisconsin Regional Planning Commission business.

PREPARED JANUARY 2020 BY:










Bicycle & Pedestrian Recommendations

City of New Holstein					
Road Name	From	To	Recommended Facility	Responsible Organization	Schools Impacted
Plymouth Street	Calumet Drive	Hickory Lane	Bike Lane	City of New Holstein	New Holstein Middle School, New Holstein High School
Plymouth Street	Pleasant Avenue	Hickory Lane	Continue sidewalk on both sides	City of New Holstein	New Holstein Middle School, New Holstein High School
Wisconsin Avenue (County Highway X/H)	Kennedy Drive	Plymouth Street	Continue sidewalk on both sides	State, Calumet, County and City of New Holstein	New Holstein Middle School, New Holstein High School


Bicycle & Pedestrian Facility Recommendations

City of New Holstein

-  School Locations
 -  Pedestrian Sign
 -  School Zone Sign
- | Existing | Recommendations |
|---|---|
|  Bike Lane |  Bike Lane |
|  Trail |  Trail |
|  Sidewalk |  Sidewalk |



0 0.13 0.25 Miles



Source:
Bike and Pedestrian data by ECWRPC 2019.
SRTS data provided by ECWRPC 2019.
This data was created for use by the East Central Wisconsin Regional Planning Commission Geographic Information System. Any other use application of this information is the responsibility of the user and such use application is at their own risk. East Central Wisconsin Regional Planning Commission disclaims all liability regarding fitness of the information for any use other than for East Central Wisconsin Regional Planning Commission business.

PREPARED JUNE 2020 BY:



New Holstein Elementary School Action Plan

Education & Encouragement

1. Participate in Walk to School Day, Winter Walk to School Month, and Bike to School Day to encourage students to walk and bicycle to school.
2. Participate in the Frequent Walker program to encourage students to walk at school and/or the Walking School Bus program to encourage students to walk to school. The Walking School Bus could start at Holy Rosary Catholic Church and walk to New Holstein Elementary School.
3. Educate and encourage parents to use the crosswalk and crossing guard at the intersection of Park Avenue and Church Street.
4. Encourage parents to park on the west side of Washington Street to reduce conflict points between students crossing the street and vehicles.
5. Participate in Safe Routes to School educational campaigns to educate parents and community members about safe driving, walking, and biking within the school district and communities.

Engineering

1. Insert curb cuts on the west side of Washington Street to meet ADA compliance standards.
2. Consider closing off the Church Street and Park Avenue parking lot entrance to reduce conflict points between cars and pedestrians.

Enforcement

1. Enforce the no parking signs in the front pick-up and drop-off driveway to prevent traffic congestion and improve visibility of students entering and leaving the school.
2. Enforce no parking in the handicap parking stalls in the front drop-off driveway to ensure they are available for individuals who need to use them.

Current Event and Program
Participation



New Holstein Elementary School

Bicycle & Walk Audit

Source:
Base data provided by Calumet County 2017.
SRTS data provided by ECWRPC 2019.

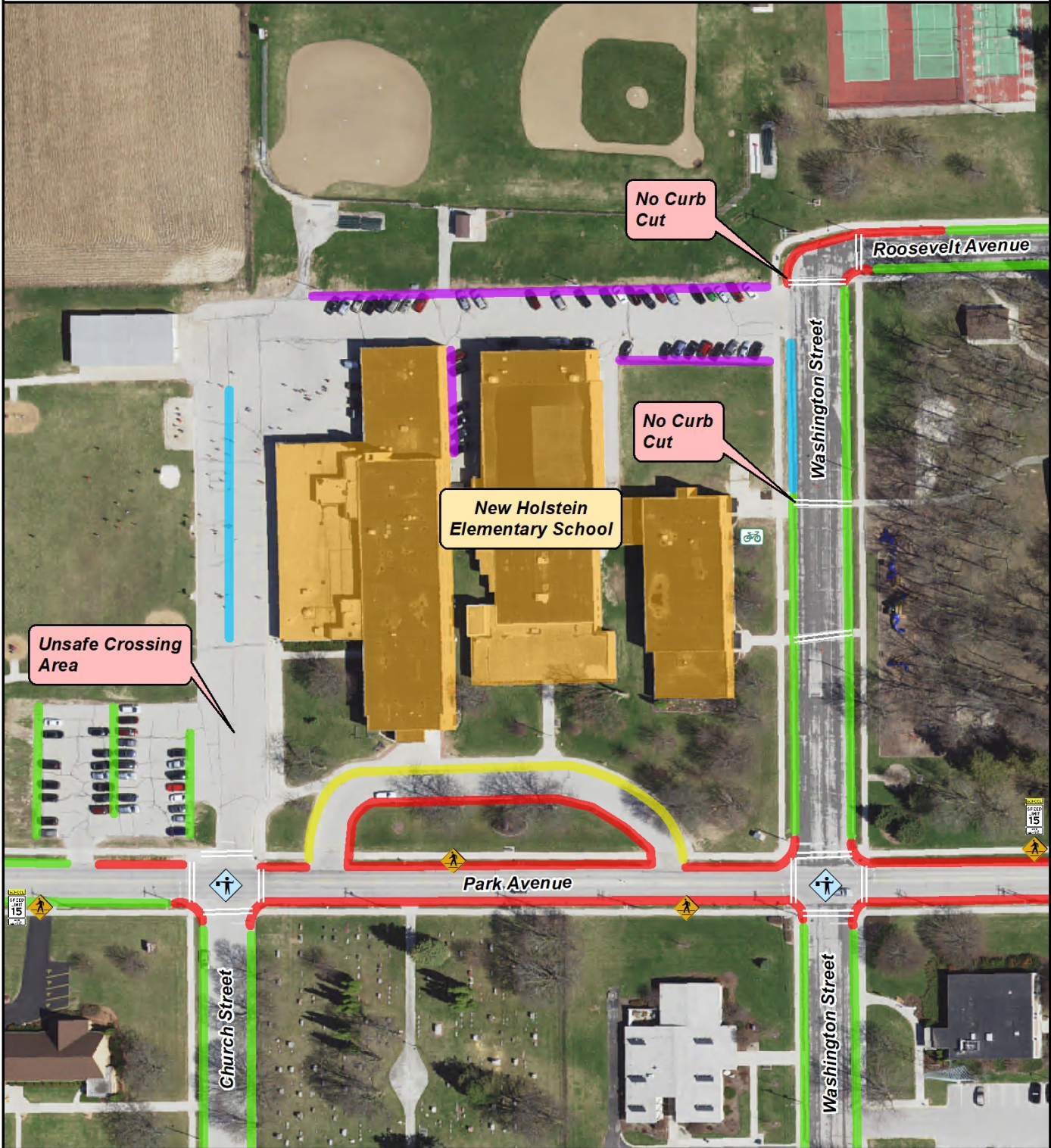
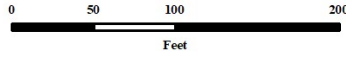
This data was created for use by the East Central Wisconsin Regional Planning Commission Geographic Information System. Any other use/application of this information is the responsibility of the user and such use/application is at their own risk. East Central Wisconsin Regional Planning Commission disclaims all liability regarding fitness of the information for any use other than for East Central Wisconsin Regional Planning Commission business.

PREPARED MARCH 2020 BY:



Legend

- | | | | |
|--|------------------|--|---------------------------|
| | Crossing Guard | | Parent Pick Up & Drop Off |
| | Pedestrian Sign | | Bus Loading Zone |
| | School Zone Sign | | General Parking |
| | Bike Rack | | Staff Parking |
| | | | No Parking |



New Holstein Middle School Action Plan

Education & Encouragement

1. Participate in Walk to School Day, Winter Walk to School Month, and Bike to School Day to encourage students to walk and bicycle to school.
2. Encourage students to use the crosswalks at Plymouth Street and Pleasant Avenue to prevent unsafe midblock crossings.
3. Participate in Safe Routes to School educational campaigns to educate parents and community members about safe driving, walking, and biking within the school district and communities.

Engineering

1. Install and update current curb cuts on Plymouth Street and Pleasant Avenue to be ADA compliant.
2. Install sidewalks, or a designated walking path from the school to the back parking lot to make it safer for pedestrians.
3. Paint the crosswalks adjacent to the school ladder style to improve visibility of students walking and bicycling.
4. Replace the stop signs in the parking lot to be MUTCD compliant because they are currently not the correct size.

Enforcement

1. Enforce slow speeds in school parking lots to improve pedestrian safety.

**Current Event and Program
Participation**

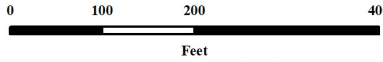


New Holstein Middle & High School

Bicycle & Walk Audit

Legend

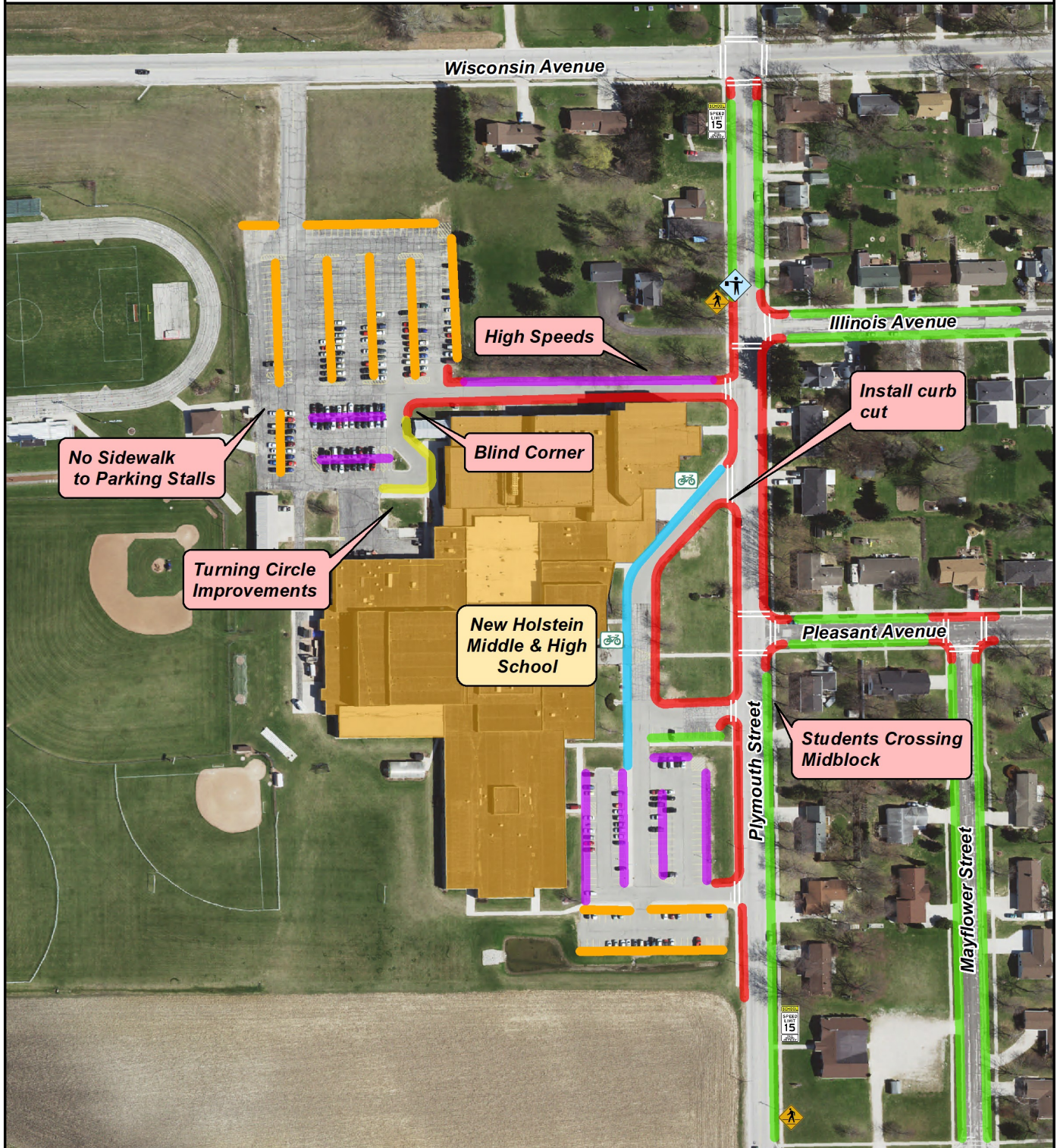
- | | | | |
|---|------------------|---|---------------------------|
|  | Crossing Guard |  | Parent Pick Up & Drop Off |
|  | Pedestrian Sign |  | Student Parking |
|  | School Zone Sign |  | Bus Loading Zone |
|  | Bike Rack |  | General Parking |
| | |  | Staff Parking |
| | |  | No Parking |



Source:
Base data provided by Calumet County 2017.
SRTS data provided by ECWRPC 2019.

This data was created for use by the East Central Wisconsin Regional Planning Commission Geographic Information System. Any other use/application of this information is the responsibility of the user and such use/application is at their own risk. East Central Wisconsin Regional Planning Commission disclaims all liability regarding fitness of the information for any use other than for East Central Wisconsin Regional Planning Commission business.

PREPARED JUNE 2020 BY:



Safe Routes to School Background Information

The East Central Wisconsin Regional Safe Routes to School (SRTS) Program focuses on engaging and empowering schools and communities to foster healthy lifestyles through environmental changes and safe walking and bicycling. By working to make it safer and more appealing for students in grades K-8 to walk and bike to school, the Regional SRTS Program is continually making strides to improve childhood health, reduce traffic congestion and pollution, and create more livable communities.

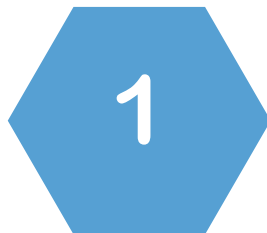
Stockbridge School District Background Information

This Action Plan identifies current transportation behaviors within the Stockbridge School District. It lists known walking, bicycling, and driving barriers, and it identifies potential engineering and programmatic strategies to address those barriers. This Action Plan is available for use by the Village of Stockbridge, Village of Harrison, Town of Stockbridge, Town of Chilton, parents, students, and community members to guide the communities work on Safe Routes to School.

The award winning Stockbridge School District is located along the eastern shore of Lake Winnebago in Calumet County. The district is midway between the Fox Cities and Fond du Lac along the scenic Niagara Escarpment.



*Elementary and
Middle School
Students Served*



Elementary School



Middle School



High School

Stockbridge School District Transportation Policies

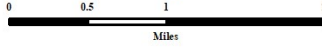
It is the policy of the Board of Education to provide transportation for those students, of any age, whose distance from their school makes this service necessary within the limitations established by State law and the regulations of the Department of Public Instruction or other appropriate agency. Transportation of eligible students with exceptional educational needs or attending a technical education program shall be arranged through the use of District-owned vehicles, through cooperation with other districts, through commercial carriers, and/or by other means in the most efficient and economical manner. Transportation privileges may be revoked if the student's conduct is in violation of the District Administrator's administrative guidelines or the Code of Conduct pertaining to student transportation.

School District Boundaries and Locations

Stockbridge Area School District



School Location



Source:
Base data provided by Calumet County 2018.
SRTS data provided by ECWRPC 2019.

This data was created for use by the East Central Wisconsin Regional Planning Commission Geographic Information Systems. Any other use/application of this information is the responsibility of the user and such use/application is at their own risk. East Central Wisconsin Regional Planning Commission disclaims all liability regarding fitness of the information for any use other than for East Central Wisconsin Regional Planning Commission business.

PREPARED JANUARY 2020 BY:





Stockbridge School District

Parent Survey Results

Total Number of Surveys: 17

Top 5 Reasons Parents ALLOW Their Child to Walk or Bike to School

- 1) Distance
- 2) Sidewalks & Trails
- 3) Crossing Guards
- 4) Weather
- 5) Adults to walk or bike with

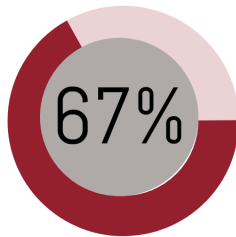
Top 5 Reasons Parents DO NOT ALLOW Their Child to Walk or Bike to School

- 1) Vehicle Speed
- 2) High traffic volume
- 3) Distance
- 4) Safety concerns
- 5) Lack of sidewalks

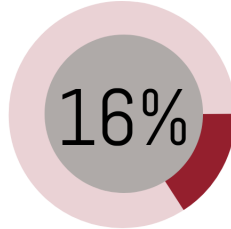
Top 5 Modes of Transportation Students Use to Get to School

- 1) Family Vehicle
- 2) School Bus
- 3) Walk
- 4) Bike
- 5) Other

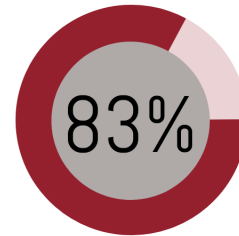
Student Transportation



Driven to School



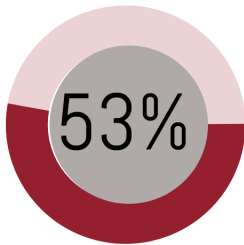
Use School Bus



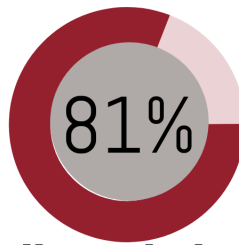
Total Vehicular



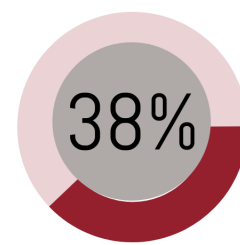
Student Transportation Alternatives



Students allowed to walk & bike to school



Believe their child needs walking or bicycling safety training



Percent of students walking & biking to school

Event and Program Participation

Stockbridge School District	Events			Programs				2020
	Walk to School Day	Winter Walk to School Month	Bike to School Day	Walking School Bus Program	Frequent Walker Program	Youth Engagement Program	Project RADAR Program	
Stockbridge Elementary School	X		X		X			
Stockbridge Middle School	X		X		X			



Walk to School Day– A global event that involves communities from more than 40 countries walking and bicycling to school on the same day. This event occurs annually on the first Wednesday in October.



Bike to School Day– Focuses on increasing bicycle safety and encourages students to bicycle to school. Bike to School Day typically falls on the second Wednesday in May.



Winter Walk to School Month– Is held in February and promotes walking to school year-round, even during the cold Wisconsin Winters.



Walking School Bus Program– Is a group of children who walk to school together under the supervision of a trained route leader.



Frequent Walker Program– Is a walking at school program and it encourages students to walk before, during, and after school by making it fun and rewarding.



Youth Engagement– Empowers elementary and middle school students, leaders, teachers, and adult facilitators by providing knowledge and resources to help lead activities and events that support active transportation.



Project RADAR– Creates awareness about safe driving habits around school zones by developing educational materials utilizing radar velocity speed guns.

Bicycle & Pedestrian Network

Stockbridge Area School District

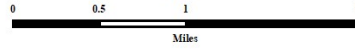


School Location

Off Road Multi Use Path

Bicycle Lane

Sidewalk



Source:
Base data provided by Calumet County 2018.
SRTS data provided by ECWRPC 2019.

This data was created for use by the East Central Wisconsin Regional Planning Commission Geographic Information Systems. Any other use/application of this information is the responsibility of the user and such use/application is at their own risk. East Central Wisconsin Regional Planning Commission disclaims all liability regarding fitness of the information for any use other than for East Central Wisconsin Regional Planning Commission business.

PREPARED FEBRUARY 2020 BY:



Bicycle & Pedestrian Recommendations

Stockbridge School District					
Road Name	From	To	Recommended Facility	Responsible Organization	Schools Impacted
Davis Street	Hwy 55	Union Street	Continue sidewalk on both sides of the street	Village of Stockbridge	Stockbridge Elementary, Middle, and High schools
Enterprise Street	Union Street	N Military Road	Sidewalks	Village of Stockbridge	Stockbridge Elementary, Middle, and High schools
Union Street	James Street	W Lake Street	Sidewalks	Village of Stockbridge	Stockbridge Elementary, Middle, and High schools
Mary Street	Richard Street	N Military Road	Sidewalks	Village of Stockbridge	Stockbridge Elementary, Middle, and High schools




Bicycle & Pedestrian Facility Recommendations

Village of Stockbridge

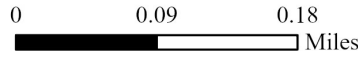
Source:
Bike and Pedestrian data by ECWRPC 2019.
SRTS data provided by ECWRPC 2019.
This data was created for use by the East Central Wisconsin
Regional Planning Commission Geographic Information
System. Any other use/application of this information is the
responsibility of the user and such use/application is at their
own risk. East Central Wisconsin Regional Planning
Commission disclaims all liability regarding fitness of the
information for any use other than for East Central Wisconsin
Regional Planning Commission business.

PREPARED JUNE 2020 BY:



-  School Locations
-  Pedestrian Sign
-  School Zone Sign

- | Existing | Recommendations |
|---|---|
|  Bike Lane |  Bike Lane |
|  Trail |  Trail |
|  Sidewalk |  Sidewalk |



Stockbridge Schools Action Plan

Education & Encouragement

1. Encourage students and staff to participate in Walk to School Day, Winter Walk to School Month, and Bike to School Day to promote walking and bicycling to school.
2. Participate in the Frequent Walker program to provide students the opportunity to walk at school.
3. Participate in Project RADAR to increase knowledge about driving safe and slowing down in school zones.
4. Participate in Safe Routes to School educational campaigns to educate parents and community members about safe driving, walking, and biking at school and in the community.

Engineering

1. Install a rapid flashing beacon at the intersection of North Military Road and School Street to improve visibility and safety of students crossing to get to school.
2. Paint ladder style crosswalks at the intersections of School Street and North Military Road, Davis Street and North Military Road, and West Lake Street and North Military Road to improve visibility of students walking and biking to and from school.
3. Paint travel lane lines on North Military Road to narrow the travel lane and decrease car speeds.
4. Make Church Street a one way roadway to improve traffic flow, reduce congestion, and improve visibility of students crossing at Church Street and School Street.
5. Improve crosswalk at the intersection of Church Street and School Street to be a straight crosswalk compared to an angled crosswalk to improve visibility and reduce crossing time.
6. Update the pedestrian signage on Church Street to be Manual on Uniform Traffic Control Devices (MUTCD) compliant.

Enforcement

1. Enforce the school zone speed limit on North Military Road to make it safer for students walking and bicycling to school, especially at the North Military and School Street crossing.

Evaluation

1. Evaluate North Military Road to see if car speeds decrease with painted travel lanes.
2. Evaluate the safety of students crossing at the intersection of North Military Road and School Street after ladder style crosswalks are painted and/ or a rapid flashing beacon is installed.

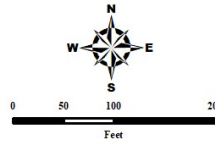
Current Event and Program Participation



Stockbridge School District Bicycle & Walk Audit

Legend

-  Crossing Guard
-  Pedestrian Sign
-  School Zone Sign
-  Bike Rack
-  Parent Pick Up & Drop Off
-  Bus Loading Zone
-  General Parking
-  Staff Parking
-  No Parking



Source:
Base data provided by Calumet County 2017.
SRTS data provided by ECWRPC 2017.

This data was created for use by the East Central Wisconsin Regional Planning Commission Geographic Information System. Any other use/application of this information is the responsibility of the user and such use/application is at their own risk. East Central Wisconsin Regional Planning Commission disclaims all liability regarding fitness of the information for any use other than for East Central Wisconsin Regional Planning Commission business.

PREPARED MARCH 2020 BY:

