



Omro School District

Safe Routes to School Action Plan

Abstract

TITLE: Omro School District Safe Routes to School Action Plan

CONTACT: Ashley Tracy

AUTHORS: Ashley Tracy, Senior Planner – SRTS Coordinator
Wilhelmina Paustian, Senior Planner
Katie Livernash, Associate SRTS Planner

SUBJECT: Safe Routes to School Local Action Plan

DATE: November 2021

PLANNING AGENCY: East Central Wisconsin Regional Planning Commission
400 Ahnaip Street, Suite 100
Menasha, WI 54952
www.ecwrpc.org

This Safe Routes to School Action Plan describes the existing conditions around schools within the Omro School District. The three (3) schools included within this action plan are H.B. Patch Elementary School, Omro Elementary, and Omro Middle School. This action plan also includes future community improvements based on these conditions and information gathered by parents of students. The recommendations are given through the Safe Routes to School 6 E's framework.

Table of Contents

| | |
|---|-----------|
| The Six E's of Safe Routes to School..... | 1 |
| Current Event and Program Participation..... | 2 |
| Safe Routes to School and Omro School District Background | 3 |
| Map — Omro School District Boundary | 4 |
| School District Equity Analysis | 5 |
| Map — Median Household Income by Block Group | 6 |
| Omro Survey Result Infographic | 7 |
| Highlights: What Works Well at the Schools | 8 |
| H.B. Patch Elementary School Audit and Action Plan..... | 9 |
| Omro Elementary School Audit and Action Plan | 12 |
| Omro Middle School Audit and Action Plan | 14 |
| Summary 2009 Engineering Recommendations | 17 |
| Summary 2021 Engineering Recommendations | 18 |
| Map — Existing Bike and Pedestrian Facilities | 19 |
| Map — Winnebago Co. Planned Bike and Pedestrian Facilities | 20 |
| Bicycle & Pedestrian Network Improvements Table..... | 21 |
| Map — Bicycle & Pedestrian Network Improvements | 22 |
| Appendix A: SRTS Coalition Meeting Summary | 23 |
| Appendix B: Parent Survey Comments | 25 |

The 6 E's of Safe Routes to School

Comprehensive Safe Routes to School initiatives have been shown to be more effective at increasing physical activity and reducing injuries. The Regional Safe Routes to School program is based on these principles of the 6 E's from the Safe Routes Partnership.



Education— Providing students and the community with the skills to walk and bicycle safely, educating them about the benefits of walking and bicycling, and teaching them about the broad range of transportation choices.



Encouragement— Generating enthusiasm and increased walking and bicycling for students through events, activities, and programs.



Engineering— Creating physical improvements to streets and neighborhoods that make walking and bicycling safer, more comfortable, and more convenient.



Engagement— All Safe Routes to School initiatives should begin by listening to and working with students, families, teachers, school leaders, and existing community organizations, to build intentional and ongoing engagement opportunities into the program structure.



Evaluation— Assessing which approaches are more or less successful, ensuring that programs and initiatives are supporting equitable outcomes, and identifying unintended consequences or opportunities to improve the effectiveness of each approach. Events and programs will be evaluated on a regular basis.



Equity— Ensuring that Safe Routes to School initiatives are benefiting all demographic groups, with particular attention to ensuring safe, healthy, and fair outcomes for low-income students, students of color, students of all genders, students with disabilities, and others.

Current Event and Program Participation

| School Name | Events | | | Programs 2020—2021 | | | |
|------------------------|--------------------|-----------------------------|--------------------|----------------------------|-------------------------|--------------------------|-----------------------|
| | Walk to School Day | Winter Walk to School Month | Bike to School Day | Walking School Bus Program | Frequent Walker Program | Youth Engagement Program | Project RADAR Program |
| Omro Elementary School | X | | X | | | | |
| Omro Middle School | X | | X | | | | |
| H.B. Patch Elementary | | | | | | | |



Walk to School Day— A global event that involves communities from more than 40 countries walking and bicycling to school on the same day. This event occurs annually on the first Wednesday in October.



Bike to School Day— Focuses on increasing bicycle safety and encourages students to bicycle to school. Bike to School Day occurs annually on the Wednesday in the first full week of May.



Winter Walk to School Month— Is held in February and promotes walking to school year-round, even during the cold Wisconsin Winters.



Walking School Bus Program— Is a group of children who walk to school together under the supervision of a trained route leader.



Frequent Walker Program— Is a walking at school program which encourages students to walk before, during, and after school by making it fun and rewarding.



Youth Engagement— Empowers elementary and middle school students, leaders, teachers, and adult facilitators by providing knowledge and resources to help lead activities and events that support active transportation.



Project RADAR— Creates awareness about safe driving habits around school zones by developing educational and curriculum materials utilizing radar velocity speed guns.

Safe Routes to School Background Information

The East Central Wisconsin Regional Safe Routes to School (SRTS) Program focuses on engaging and empowering schools and communities to foster healthy lifestyles through environmental changes and safe walking and bicycling. By working to make it safer and more appealing for students in grades K-8 to walk and bike to school, the Regional SRTS Program is continually making strides to improve childhood health, reduce traffic congestion and pollution, and create more livable communities.

Omro School District Background Information

This Action Plan identifies current transportation behaviors within the Omro School District. It lists observed walking, bicycling, and driving barriers, and it identifies potential engineering and programmatic strategies to address those barriers. This Action Plan is available for use by the City of Omro, parents, students, and community members to guide the community's work on Safe Routes to School.

The Omro School District includes the Town of Algoma, Aurora, Nekimi, Nepeskun, Omro, Poygan, Poy Sippi, Rushford, Utica, and Winneconne in Waushara and Winnebago Counties. There are two elementary schools; H.B. Patch (pre-kindergarten - 1st grade) and Omro Elementary (2nd - 5th grade); one Middle School (6th grade - 8th grade); and one High school (9th - 12th grade).



*Students Served
District-wide*



*Elementary
Schools*



Middle School



High School

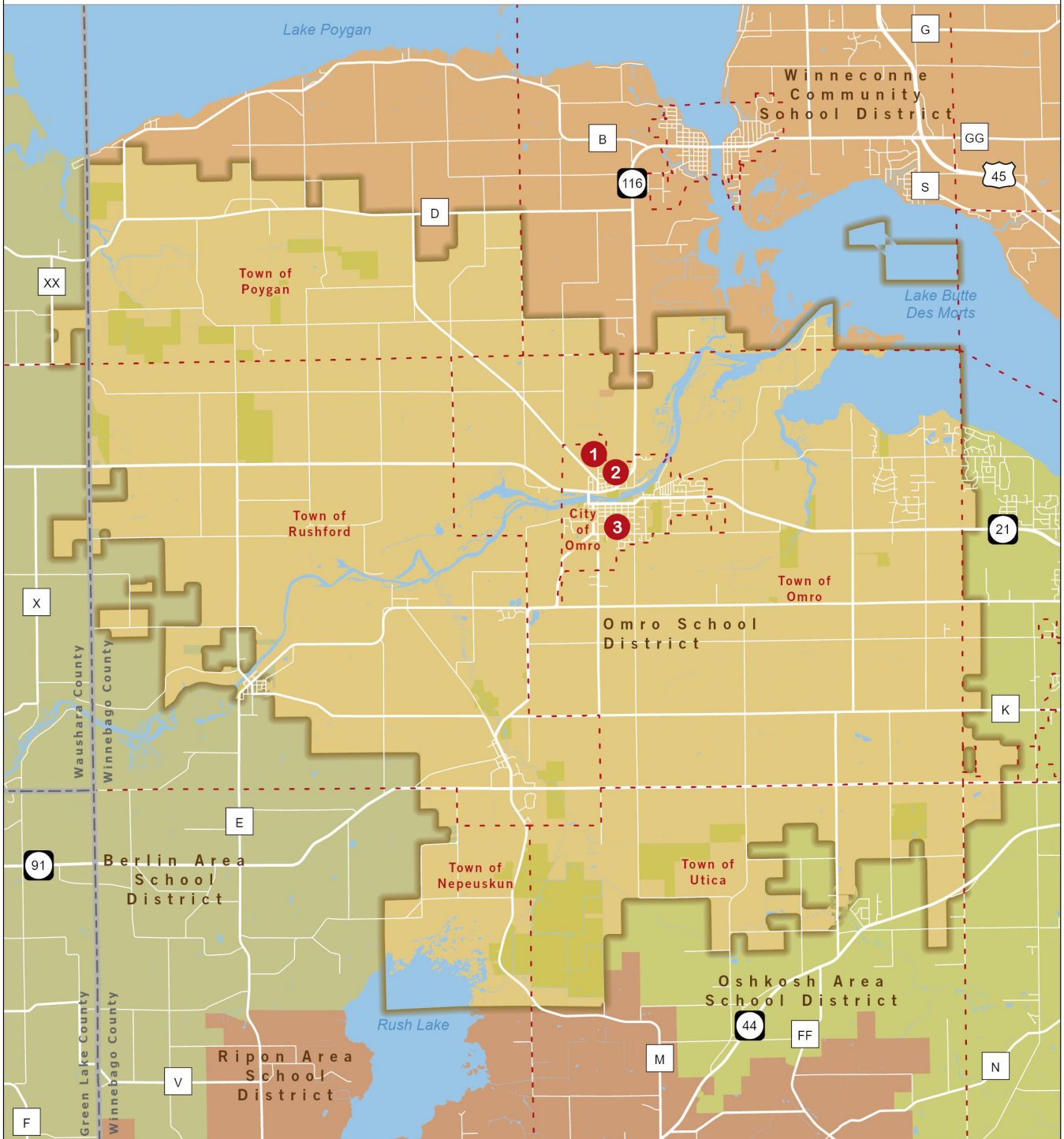
Omro School District Transportation Policies

Omro School District provides transportation for students of any age, whose distance from their school makes this service necessary within the limitations established by the State law and the regulations of the Department of Public Instruction or other appropriate agency.¹ Section 121.54(2) of the Wisconsin Statutes states that students enrolled in public elementary or secondary school, are entitled to district transportation when they reside two or more miles from the nearest public school. Districts can elect to provide transportation to students not required by law to be transported.²

¹. <https://go.boarddocs.com/wi/omro/Board.nsf/goto?open&id=BN4Q4562339B#>

². <https://dpi.wi.gov/parental-education-options/transportation/public-school-information>

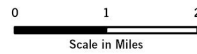
School Locations & District Boundaries | Omro School District



Schools

- 1** Omro Elementary
- 2** Omro Middle & High School
- 3** Patch Elementary

- Municipal Boundary
- County Boundary
- Omro School District



PREPARED NOVEMBER 2021 BY:
 East Central Wisconsin
 Regional Planning Commission
ECWRPC
 Calumet • Fond du Lac • Waubesa • Waushara • Winnebago
 Shawano • Waubesa • Waushara • Winnebago

Source:
 Base data provided by Regional Counties, 2021.
 SRTS data and Existing Bike/Ped Network
 provided by ECWRPC, 2021.

This data was created for use by the East Central Wisconsin Regional Planning Commission Geographic Information System. Any other use/application of this information is the responsibility of the user and such use/application is at their own risk. East Central Wisconsin Regional Planning Commission disclaims all liability regarding fitness of the information for any use other than for East Central Wisconsin Regional Planning Commission business.

Omro School District Equity Analysis

The Safe Routes to School Equity Analysis identifies schools that would benefit from additional resources to promote safe walking and bicycling. Data shows that people walking and bicycling in under-privileged communities suffer from higher injury and fatality rates than the general population.¹ With this in mind, the median household income and the participation in the Free and Reduced Cost Lunch Program were evaluated to help identify any potential under-privileged communities within the Omro School District. Knowing these locations can guide decisions for where improvements and involvement in the SRTS Program should be focused. It also identifies locations where bike and pedestrian facilities can be upgraded and installed.

Median household income data is used to identify the block groups where more children may be walking and bicycling. A block group is a geographical unit used by the U.S. Census Bureau; it is a subdivision of a census tract that covers a contiguous area and is a cluster of census blocks.² This is evaluated because data shows children from low-income families are twice as likely to walk to school as children from higher-income families. SRTS initiatives have many benefits including safety improvements for low-income communities and schools.¹

A low-income family is generally defined as one in which the family income is no more than twice the federal poverty limit. The 2021 poverty limit in WI is \$26,500 for a family of four, which means a low-income family of four makes \$53,000 or less.³ The Median Household Income was collected by block groups for the Omro School District and is displayed in the map on the following page. According to the data, H.B. Patch is located on the border of a low-income family block group. Family income is also used to qualify students for the Free and Reduced Cost Lunch Program under the National School Lunch Program, which is outlined for each school in the table below.

Improvements to safe and equitable walking and bicycling experiences can be provided for students and community members through the implementation of SRTS 6 E's. Participating in events and programs helps to educate and engage the community. In addition, engineering upgrades and installation of proper bicycle and pedestrian facilities will improve access and safety. Recommendations for the 6 E's can be found in the School Action Plans, as well as the bicycle and pedestrian facility recommendations on page 21.

| School Name | Percent of Students Receiving Free and Reduced Cost Lunch (2019) ⁴ |
|-----------------------------|---|
| H.B Patch Elementary School | 44.97% |
| Omro Elementary School | 36.48% |
| Omro Middle School | 31.05% |

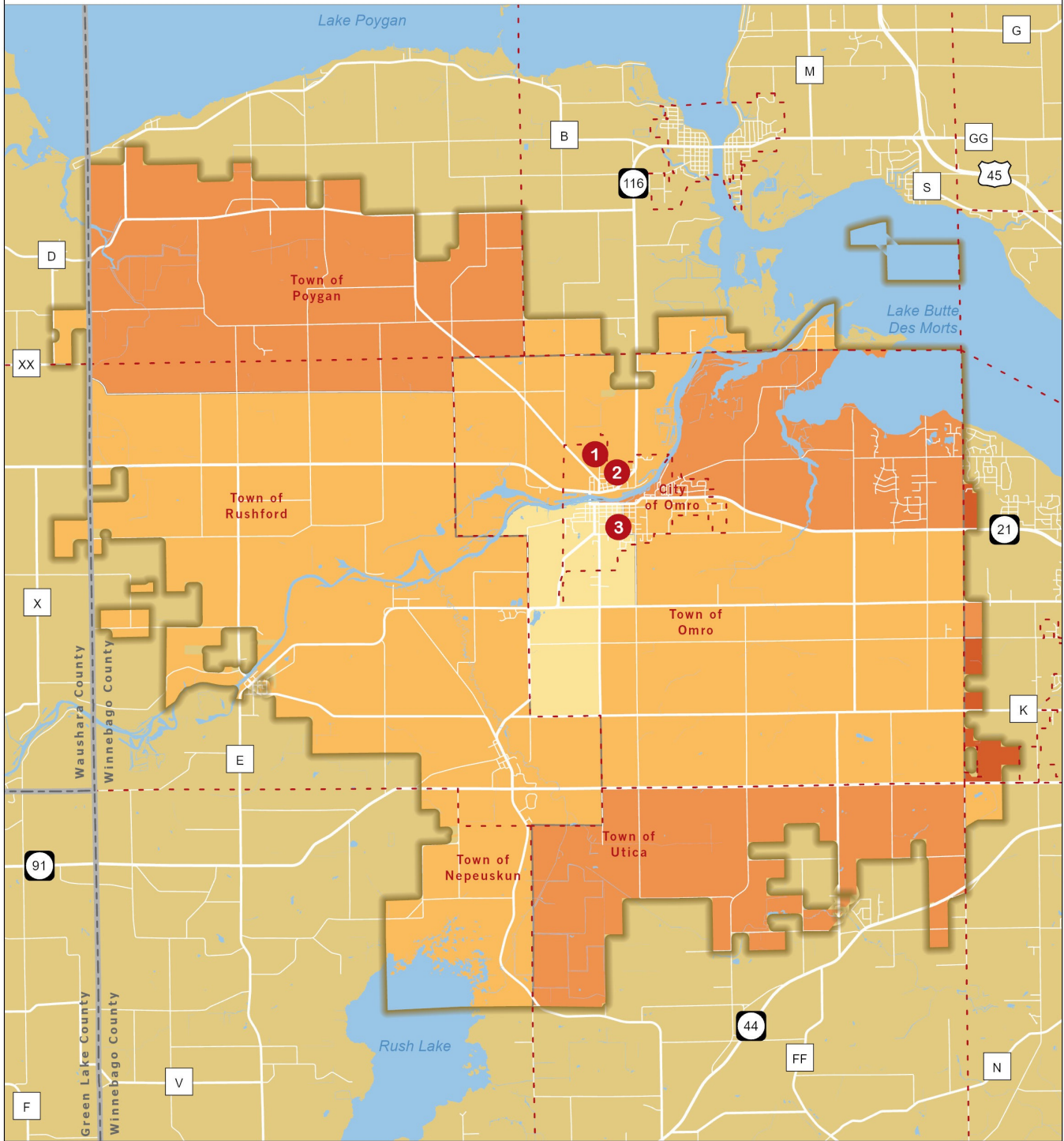
¹ <https://www.saferoutespartnership.org/sites/default/files/pdf/LowIncomeGuide.pdf>

² https://www.census.gov/programs-surveys/geography/about/glossary.html#par_textimage_4

³ <https://www.dhs.wisconsin.gov/medicaid/fpl.htm>

⁴ Wisconsin Department of Public Instruction: Enrollment and Participation Reports for Food and Nutrition Programs Operation in WI Schools and Institutions. October 2019.

Median Household Income by Block Group | Omro School District



Schools

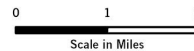
- 1 Omro Elementary
- 2 Omro Middle & High School
- 3 Patch Elementary

- Municipal Boundary
- County Boundary

2020 Median Household Income

- \$37,283 - \$50,000
- \$50,000 - \$70,000
- \$70,000 - \$90,000
- \$90,000 - \$103,809

 Omro School District



PREPARED NOVEMBER 2021 BY:



Source: Household Income data provided by ACS 2014-2019. Base data provided by Regional Counties, 2021. SRTS data provided by ECWRPC, 2021.

This data was created for use by the East Central Wisconsin Regional Planning Commission Geographic Information System. Any other use/application of this information is the responsibility of the user and such use/application is at their own risk. East Central Wisconsin Regional Planning Commission disclaims all liability regarding fitness of the information for any use other than for East Central Wisconsin Regional Planning Commission business.

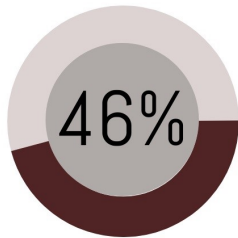


Omro Area School District

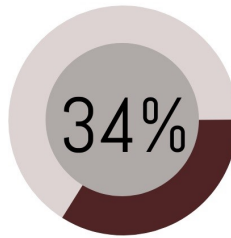
Parent Survey Results

Number of Surveys: 141

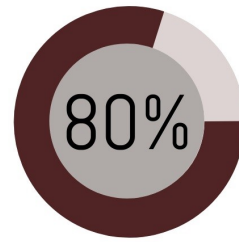
Student Transportation



Driven to School



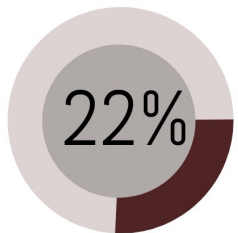
Use School Bus



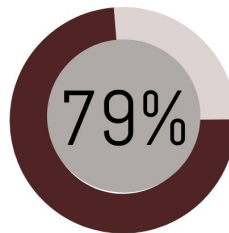
Total Vehicular



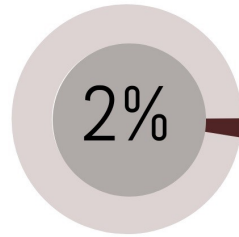
Student Transportation Alternatives



Students allowed to walk & bike to school



Believe their child needs walking or bicycling safety training



Students walking & biking to school

Top 5 Reasons Parents ALLOW Their Child to Walk or Bike to School

- 1) Weather
- 2) Distance
- 3) Traffic speed
- 4) Amount of traffic
- 5) Convenience of walking/biking

Top 5 Reasons Parents DO NOT ALLOW Their Child to Walk or Bike to School

- 1) Distance
- 2) Amount of traffic
- 3) Traffic speed
- 4) Safety concerns at intersections and crossings
- 5) Lack of sidewalks or pathways

Top 5 Modes of Transportation Students Use to Get to School

- 1) Parent Vehicle
- 2) School Bus
- 3) Carpool
- 4) Other
- 5) Walk

Highlights: What works well

✓ H.B. Patch

1. Staff help students out of and into their parent's car during drop-off and pick-up. This increase the safety of the student. This smooth process also allows traffic to move more swiftly through the drop off and pick up line. in which speeds up the line and increases safety.
2. Buses unload and load students at the same time, while staff pauses the parent drop off. This increases the safety of students walking to/from the bus and school.

Current Event and Program Participation: Currently not participating

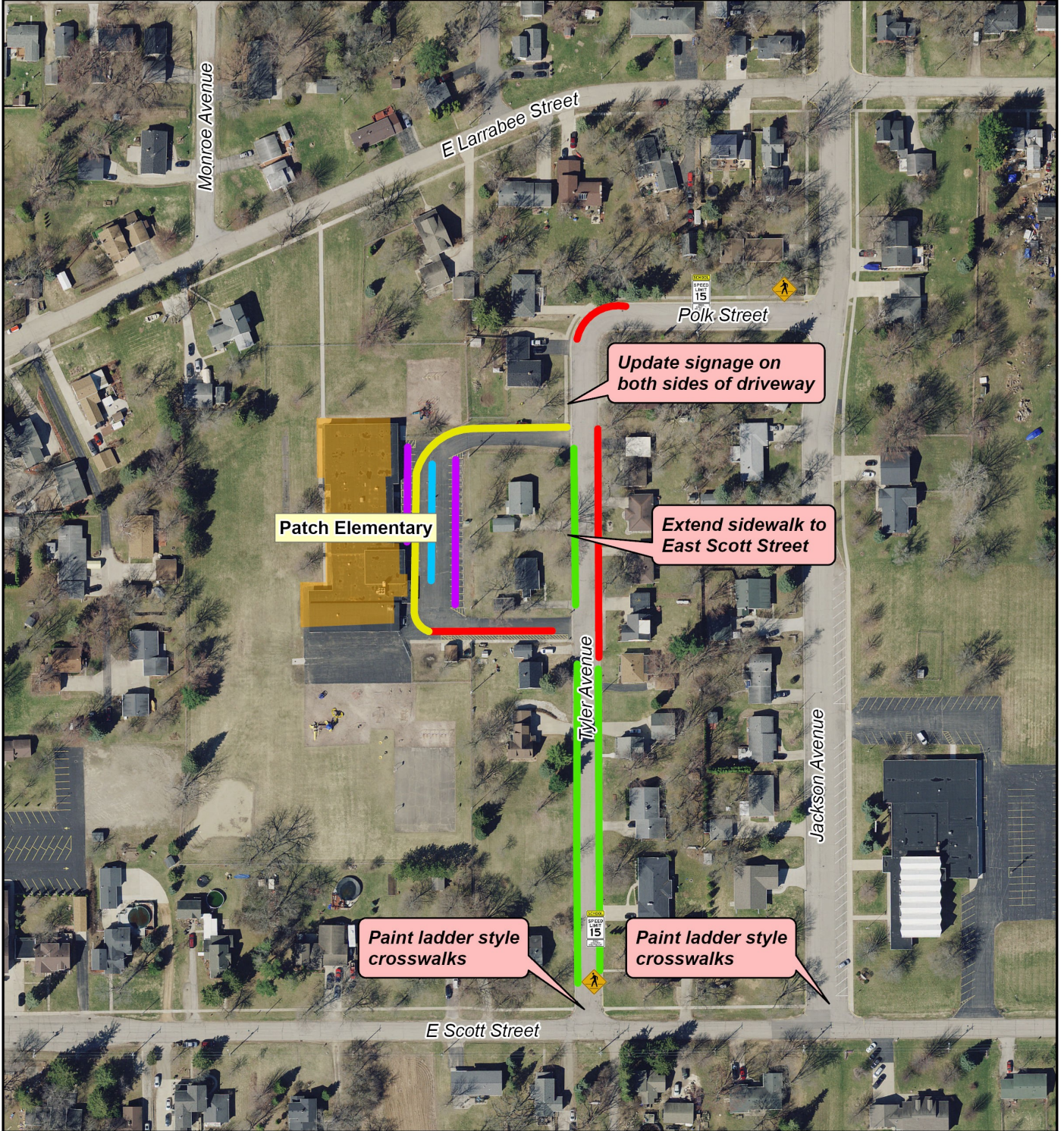
✓ Omro Elementary and Middle Schools

1. Buses unload and load students at the same time in the back parking area of the Elementary School and also the Middle School. This increases the safety of students walking to/from the bus and school, as they are kept separate from parent drop-off and pick up and do not have to cross any roads.
2. High visibility crosswalk updates at the intersection of East River Drive and N. Webster Avenue improves student visibilities. The crossing guard in the morning is helpful because there is low driver visibility with the sun glare.

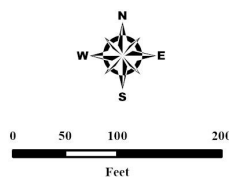
Current Event and Program Participation:



Bicycle & Walk Audit | HB Patch Elementary School



-  Crossing Guard
-  Student Safety Patrol
-  School Zone Sign
-  Pedestrian Sign
-  Bus Loading Area
-  Parent Pick Up / Drop Off
-  Parent/General Parking
-  Staff Parking
-  No Parking



Source:
Base data/Imagery provided by Winnebago County 2021.
SRTS data provided by ECWRPC 2021.

This data was created for use by the East Central Wisconsin Regional Planning Commission Geographic Information System. Any other use/application of this information is the responsibility of the user and such use/application is at their own risk. East Central Wisconsin Regional Planning Commission disclaims all liability regarding fitness of the information for any use other than for East Central Wisconsin Regional Planning Commission business.

PREPARED OCTOBER 2021 BY:



H.B. Patch Elementary School Action Plan

Education & Encouragement

1. Participate in Walk to School Day, Winter Walk to School Month, and Bike to School Day events to encourage students and parents to walk and bike to school when possible.
2. Participate in the Frequent Walker Program to provide all students, including those who cannot walk to school, the opportunity to be active during the school day.

Engineering

1. Work with the Town/Property owner to trim the tree branches on Polk Street because they are obstructing the pedestrian sign.
2. Update the signs at the parking lot entrance. Signs should be individually installed on separate posts or mountings. Refer to the MUTCD Section 2A.16 Guidance.
3. Extend sidewalks along the west and east side of Tyler Street to the E. Scott Street intersection.
4. Paint ladder style crosswalks at the intersections of Jackson Avenue and E. Scott St. and Tyler Avenue and E. Scott St.

Engagement

1. Host a Bike Rodeo to engage parents, students, police and fire departments, and members of the community to teach bicycle safety skills.
2. Participate in SRTS educational campaigns to educate parents and community members about safe driving, walking, and biking at school and in the community.

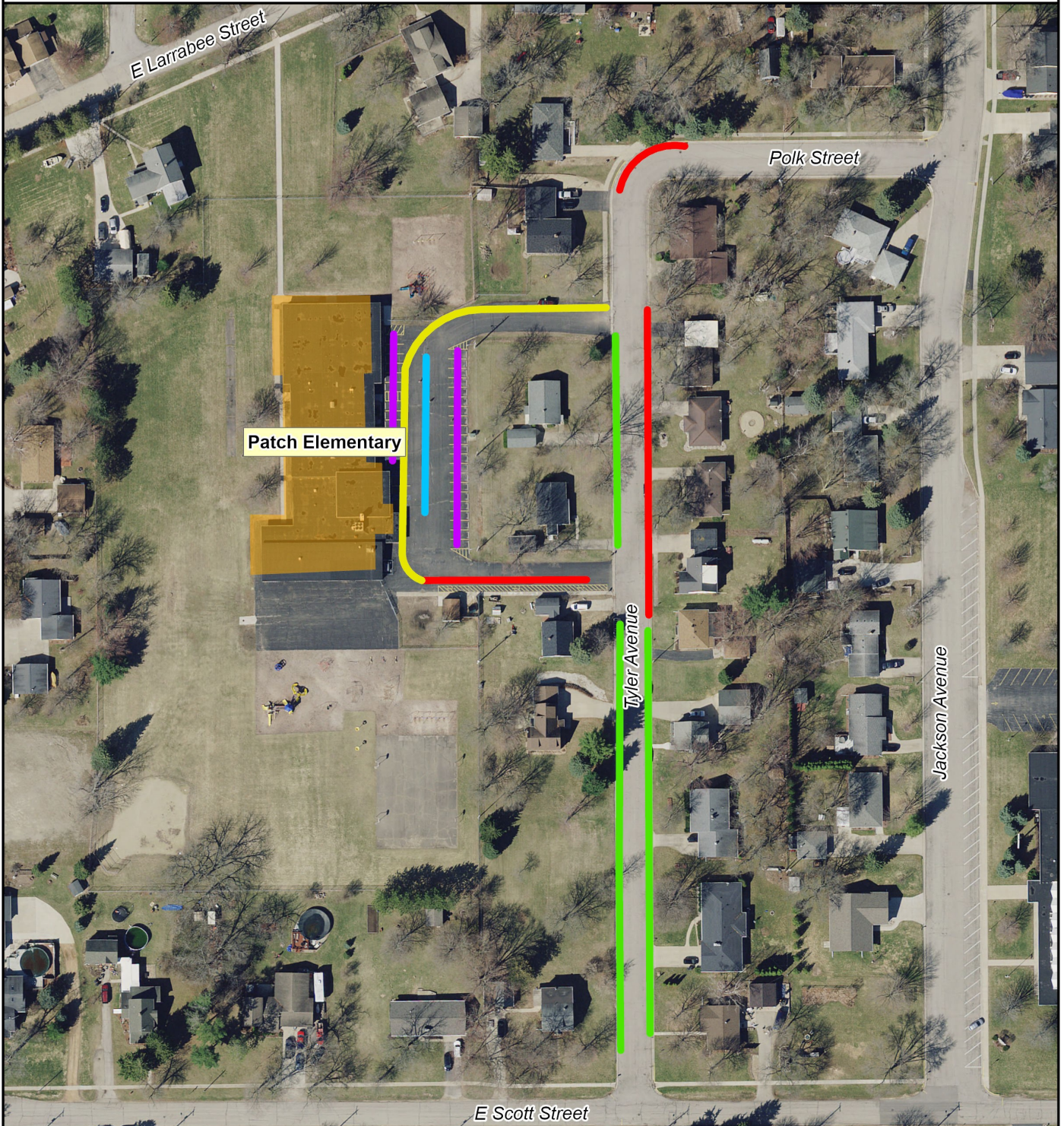
Evaluation

1. Continue to evaluate safety concerns through parent surveys regarding their children walking and/or biking to school.

Equity

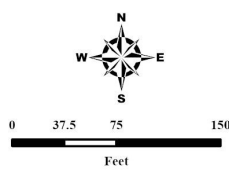
1. Please reference the Equity Analysis discussion on page 5.

Parent Parking | HB Patch Elementary School



Patch Elementary

- Bus Loading Area
- Parent Pick Up / Drop Off
- Parent/General Parking
- Staff Parking
- No Parking



Source:
 Base data/Imagery provided by Winnebago County 2021.
 SRTS data provided by ECWRPC 2021.
 This data was created for use by the East Central Wisconsin Regional Planning Commission Geographic Information System. Any other use/application of this information is the responsibility of the user and such use/application is at their own risk. East Central Wisconsin Regional Planning Commission disclaims all liability regarding fitness of the information for any use other than for East Central Wisconsin Regional Planning Commission business.

PREPARED AUGUST 2021 BY:



Omro Elementary School Action Plan

Education & Encouragement

1. Participate in Walk to School Day, Winter Walk to School Month, and Bike to School Day events to encourage students and parents to walk and bike to school.
2. Participate in the Walking School Bus Program to encourage students to walk to school. Students could meet at the Pedestrian Bridge and walk to school together.
3. Participate in the Frequent Walker Program to encourage students to walk at school.
4. Participate in Project RADAR to educate students and community members about driving safe and slowing down in school zones.

Engineering

1. On N. Webster Ave, the speed limit sign and the school zone speed limit sign should be on separate posts. Refer to MUTCD section 2A.16 and section 7B.08 Standards and Guidelines.
2. Re-paint faded crosswalk lines in the school parking lot. *
3. Upgrade the stop sign on the side road connecting the elementary and middle schools because it is too short and small; It does not meet MUTCD standards.
4. Raise the height of the school zone speed limit sign on Fox Trail Rd. near N. Webster Ave. because it is too short and not up to MUTCD standards. Refer to MUTCD 2A.18 Standard.
5. Paint a ladder style crosswalk at the intersection of Fox Trail Rd. and N. Webster Ave. to increase student visibility at crossings.

Engagement

1. Host a Bike Rodeo to engage parents, students, police and fire departments, and members of the community to teach children bike safety skills.
2. Participate in SRTS educational campaigns to educate parents and community members about safe driving, walking, and biking at school and in the community.

Evaluation

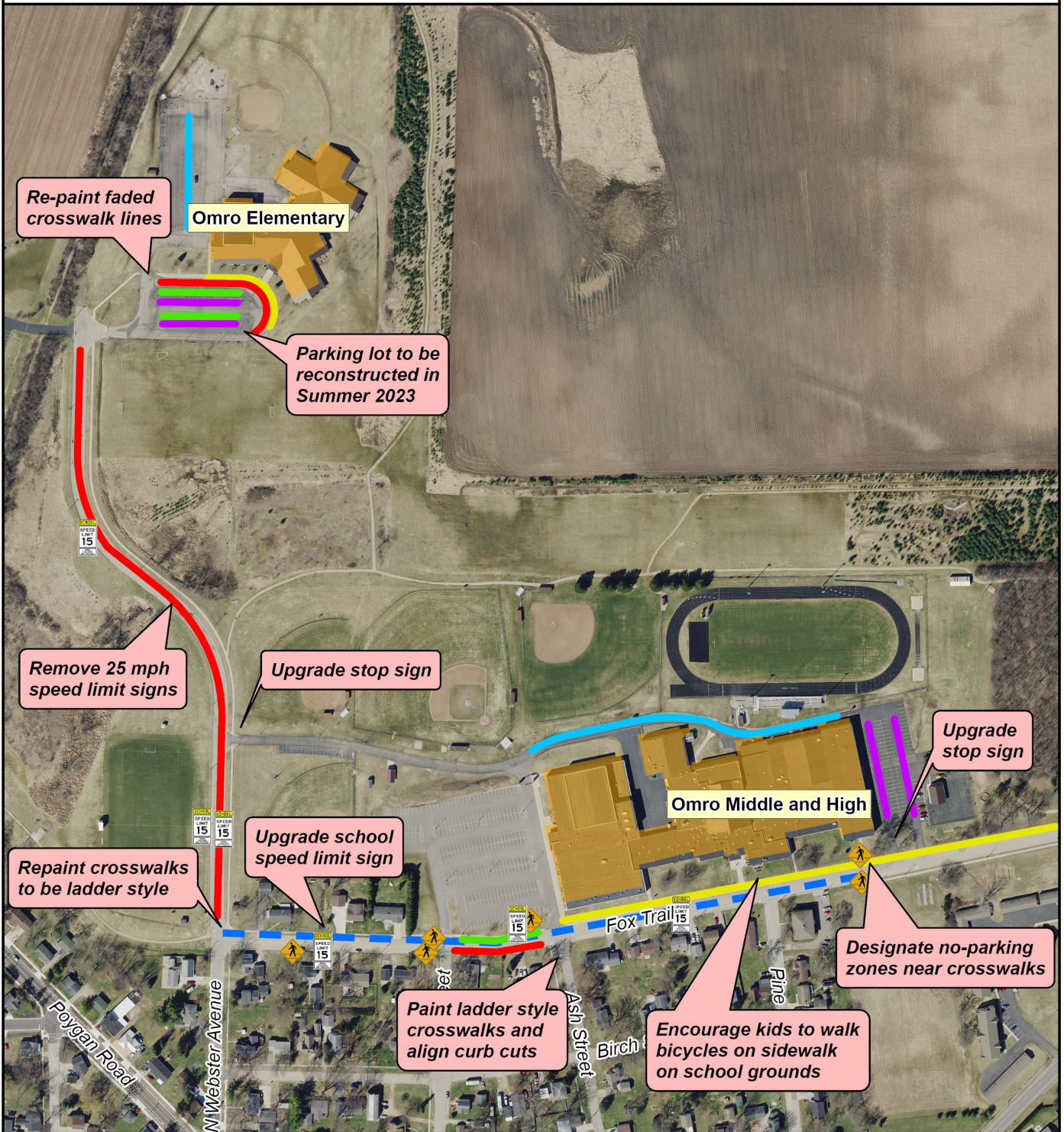
1. Continue to evaluate safety concerns through parent surveys regarding their children walking/biking to school.
2. Evaluate the number of students walking/biking to school as participation increases in SRTS events and programs.

Equity

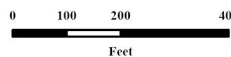
1. Please reference the Equity Analysis discussion on page 5.

* Parking lot re-configuration construction planned for Summer 2022.

Bicycle & Walk Audit | Omro Elementary and Middle School



- | | | | |
|--|-----------------------|--|---------------------------|
| | Crossing Guard | | Bus Loading Area |
| | Student Safety Patrol | | Parent Pick Up / Drop Off |
| | School Zone Sign | | Parent/General Parking |
| | Pedestrian Sign | | Staff Parking |
| | Bike Lane | | No Parking |



Source:
Base data/Imagery provided by Winnebago County 2021.
SRTS data provided by ECWRPC 2021.

This data was created for use by the East Central Wisconsin Regional Planning Commission Geographic Information System. Any other use application of this information is the responsibility of the user and such use-application is at their own risk. East Central Wisconsin Regional Planning Commission disclaims all liability regarding fitness of the information for any use other than for East Central Wisconsin Regional Planning Commission business.

PREPARED NOVEMBER 2021 BY:



Omro Middle School Action Plan

Education & Encouragement

1. Educate parents to wait for the buses exiting the Middle School Parking lot onto Fox Trail Rd., to reduce conflict points between buses and parent vehicles.
2. Educate and encourage students to walk their bikes when they are on the school grounds. This is a safety concern for students walking on the sidewalk.
3. Educate parents to drive slowly on Fox Trail Rd after they drop off their student. Parents speed increased after dropping off their children. Participate in the Project RADAR Program to educate community members about slowing down in school zones.
4. Implement the SRTS bicycle and snowshoe curriculum in Physical Education classes to encourage and educate students to get exercise and participate in these activities safely.
5. Participate in the Walking School Bus Program to encourage students to walk to school. Students could meet at the Pedestrian Bridge and walk to school together.

Engineering

1. Upgrade the stop sign at the Middle School parking lot exit, because it is too short and small. Refer to MUTCD 2A.18 Standard.
2. Eliminate parking within 15' of the crosswalk to the middle school entrance to improve visibility of students using the crosswalk.
3. Align the curb cut at the High School entrance to the sidewalk at the corner of Fox Trail Rd. & Ash St.
4. Paint a ladder style crosswalk at the intersection of Fox Trail Road and Ash Street to increase student visibility at crossing.

Engagement

1. Promote Youth Engagement Programs through the bike shop to get students actively involved in bicycle maintenance education.
2. Participate in SRTS educational campaigns to educate parents and community members about safe driving, walking, and biking at school and in the community.

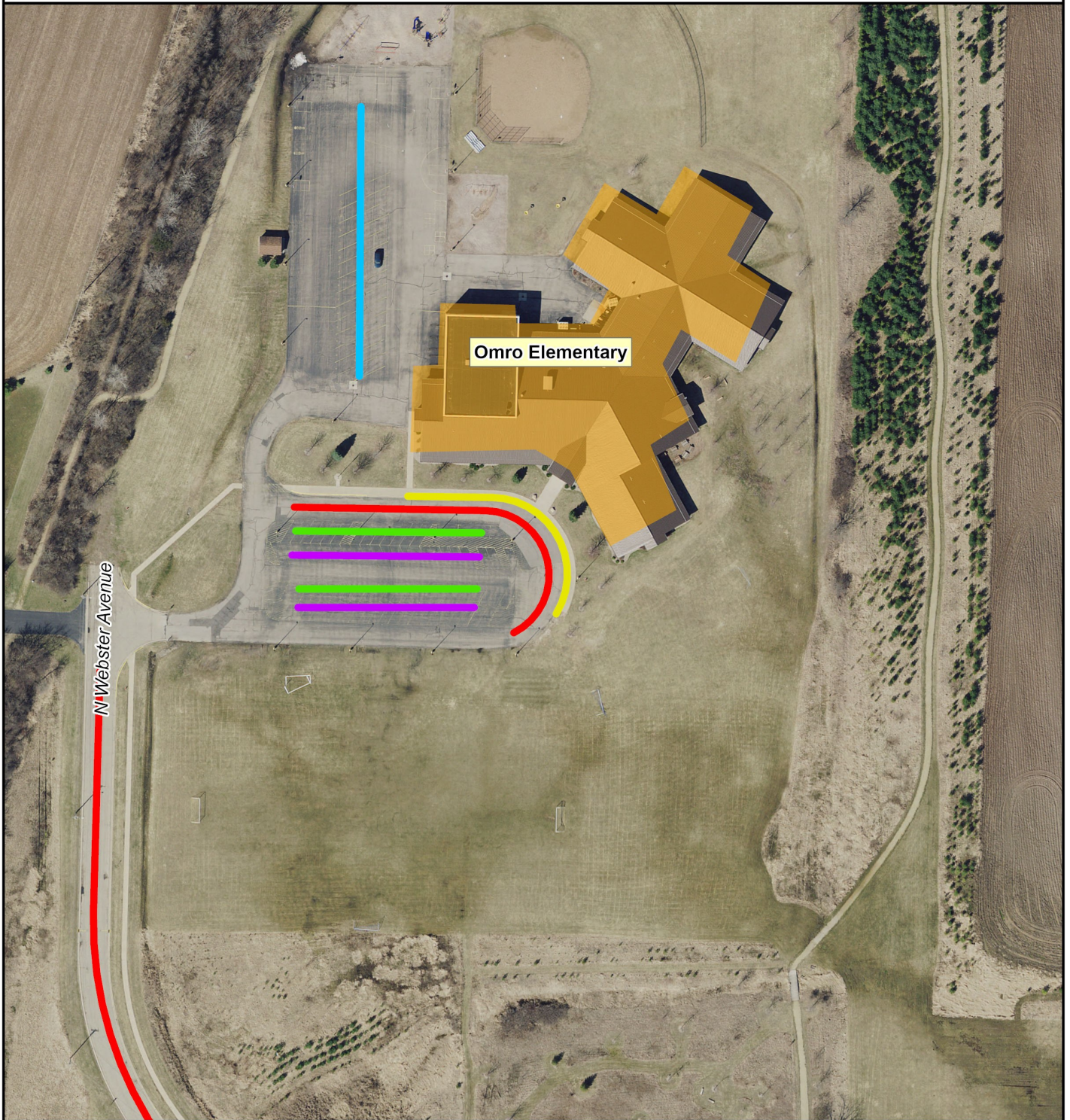
Evaluation

1. Continue to evaluate safety concerns from parents about their children walking and biking to school. Conduct parent surveys as needed.
2. Evaluate the number of students walking/biking to school as participation increases in SRTS events and programs.

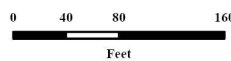
Equity

1. Please reference the Equity Analysis discussion on page 5.

Parent Parking | Omro Elementary School



- Bus Loading Area
- Parent Pick Up / Drop Off
- Parent/General Parking
- Staff Parking
- No Parking



Source:
Base data/Imagery provided by Winnebago County 2021.
SRTS data provided by ECWRPC 2021.

This data was created for use by the East Central Wisconsin Regional Planning Commission Geographic Information System. Any other use/application of this information is the responsibility of the user and such use/application is at their own risk. East Central Wisconsin Regional Planning Commission disclaims all liability regarding fitness of the information for any use other than for East Central Wisconsin Regional Planning Commission business.

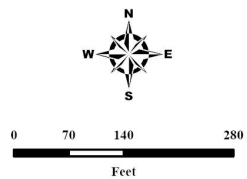
PREPARED AUGUST 2021 BY:



Parent Parking | Omro Middle School



- Bus Loading Area
- Parent Pick Up / Drop Off
- Parent/General Parking
- Staff Parking
- No Parking



Source:
Base data/Imagery provided by Winnebago County 2021.
SRTS data provided by ECWRPC 2021.

This data was created for use by the East Central Wisconsin Regional Planning Commission Geographic Information System. Any other use/application of this information is the responsibility of the user and such use/application is at their own risk. East Central Wisconsin Regional Planning Commission disclaims all liability regarding fitness of the information for any use other than for East Central Wisconsin Regional Planning Commission business.

PREPARED AUGUST 2021 BY:



Summary Highlights: 2009 Engineering Recommendations

Featured below is a table highlighting some of the top engineering recommendations provided in the 2009 Action Plan. The right hand column indicates what improvements were made following that Plan Adoption. A complete list of recommendations can be found in the 2009 Action Plan document.

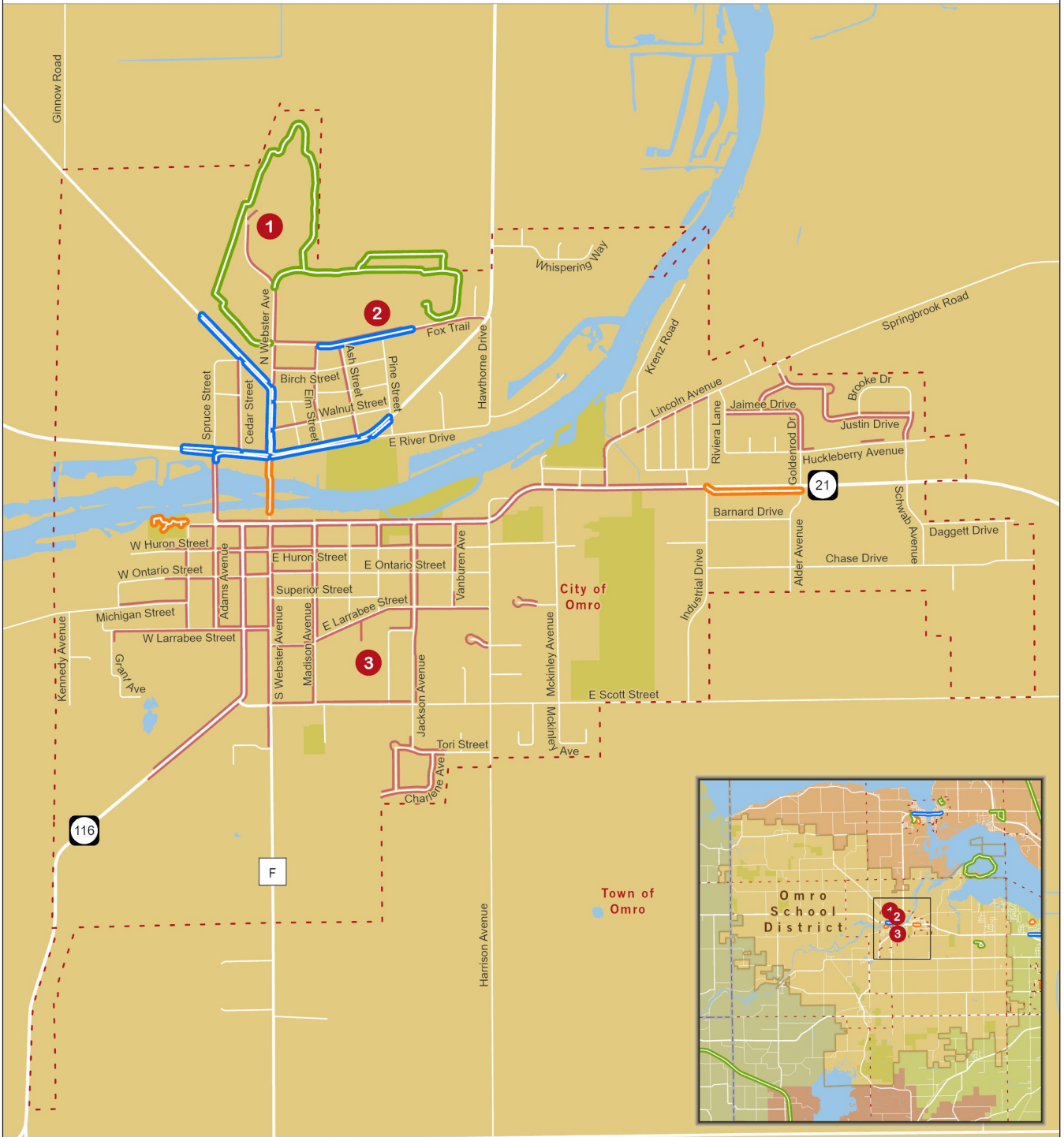
| 2009 Recommendations | | Improvements Made? |
|---|---|--|
| Move the bike racks near Omro Middle School entrance in front of the school | ✓ | Bike rack was moved so that students don't have to travel across the parking lot |
| Concerns about buses loading Omro MS students in the PM on Fox Trail Drive | ✓ | Buses now load students at the back of school in the PM |
| Rehabilitate pedestrian bridge over the Fox River | ✓ | Pedestrian Bridge improvements made |
| High visibility crosswalks: (Webster Ave & Fox Trail Dr; Webster Ave & Poygan Rd; Webster Ave & River Dr; Webster Ave & Main St; Webster Ave & Willow St) | ✓ | Crosswalk updates at the intersection of Webster Avenue & River Drive and Webster Avenue & Poygan Road |
| Reverse the entrance and exit into Omro High School parking lot | ✓ | Entrance and exit to/from the High School parking lot are now one-way |
| Update school zone signage near Omro Middle School | ✓ | Signage is up to MUTCD standards |
| Sheltered bike rack for Omro Middle School | ✓ | Bike Shop at Middle School was built |

Summary checklist: 2021 Engineering Recommendations

The table below lists SRTS Engineering Recommendations for the 2021 Action Plan for each school. This list is a summary of the engineering recommendations listed in the School Action Plan for each school identified in this this document.

| 2021 Recommendations | | ✓ |
|---|--|---|
| H.B. Patch | | |
| Trim tree branches blocking pedestrian sign on Polk Street | | |
| Update the two sign posts with multiple signage at the parking lot entrance | | |
| Extend sidewalks along the west and east side of Tyler Street | | |
| Paint ladder-style crosswalks at intersections of Jackson Ave.& E. Scott St. and Tyler Ave.& E Scott St. | | |
| Omro Elementary and Middle Schools | | |
| On N. Webster Ave, separate the school zone speed limit from the 25mph speed limit sign | | |
| Re-paint faded crosswalk lines in the OES parking lot | | |
| Upgrade the stop sign that is too small on side road connecting OES and High School campus | | |
| Raise the height of the school zone speed limit sign on Fox Trail Dr near the N. Webster Ave intersection | | |
| Paint a ladder style crosswalk at the intersection of Fox Trail Rd. and N. Webster Ave. | | |
| Upgrade the stop sign at the Middle School parking lot exit that is too small and short | | |
| Eliminate parking within 15' of the crosswalk to the Middle School entrance | | |
| Align the curb cut at the High School entrance to the sidewalk at the corner of Fox Trail Rd/ Ash St. | | |
| Paint ladder style crosswalk at the intersection of Fox Trail Road and Ash Street | | |
| Work with the Town and County to develop a design for a sidewalk and crosswalk across Hwy 116 from Whispering Way to Fox Trail Road | | |

Existing Bike & Pedestrian Network | Omro School District

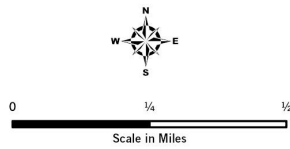


Schools

- 1 Omro Elementary
- 2 Omro Middle & High School
- 3 Patch Elementary
- - - Municipal Boundary

Existing Network

- Bike Lane
- Paved Trail
- Unpaved Trail
- Sidewalk
- Omro School District



PREPARED NOVEMBER 2021 BY:

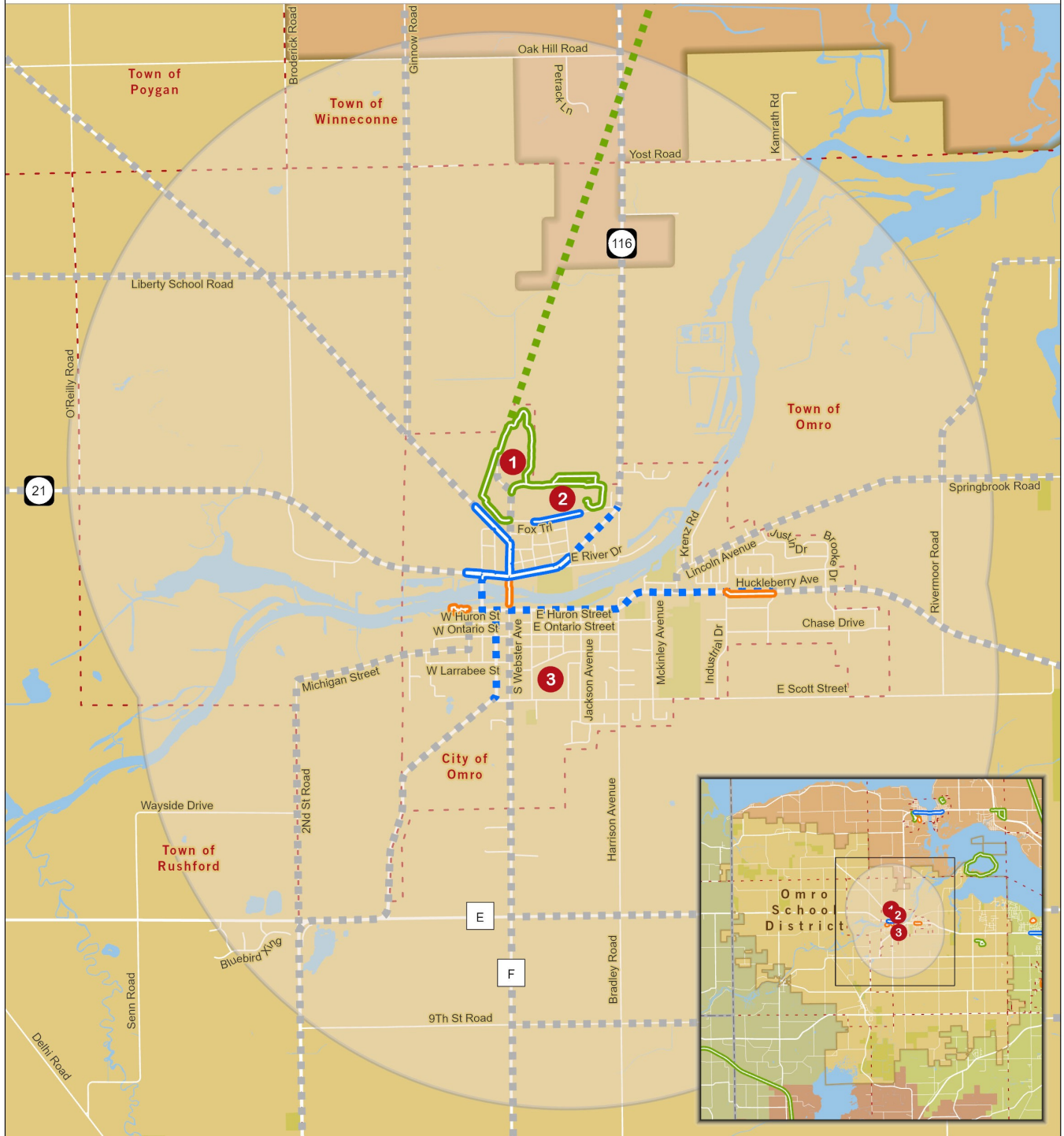


Source:
Base data provided by Regional Counties, 2021.
SRTS data and Existing Bike/Ped Network
provided by ECWRPC, 2021.

This data was created for use by the East Central Wisconsin Regional Planning Commission Geographic Information System. Any other use/application of this information is the responsibility of the user and such use/application is at their own risk. East Central Wisconsin Regional Planning Commission disclaims all liability regarding fitness of the information for any use other than for East Central Wisconsin Regional Planning Commission business.

Winnebago County Proposed Bike & Pedestrian Network

Omro School District



Schools

- 1** Omro Elementary
- 2** Omro Middle & High School
- 3** Patch Elementary

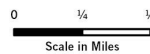
- - Municipal Boundary
- Two Mile Bussing Buffer
- ⊕ Omro School District

Existing Network

- Bike Lane
- Paved Trail
- Unpaved Trail

Proposed Winnebago County Network

- Bike Lane
- Shared Use Path
- Paved Shoulder or Minor Update



PREPARED NOVEMBER 2021 BY:
 East Central Wisconsin
 Regional Planning Commission
ECWRPC
 Callahan • Fritsch • Lutz • Matheson • Padgett
 Shawers • Wascari • Waudshere • Winnebago

Source: Planned Bike/Ped Network provided by Winnebago County, 2017. Base data provided by Regional Counties, 2021. SRTS data and Existing Bike/Ped Network provided by ECWRPC, 2021.

This data was created for use by the East Central Wisconsin Regional Planning Commission Geographic Information System. Any other use/application of this information is the responsibility of the user and such use/application is at their own risk. East Central Wisconsin Regional Planning Commission disclaims all liability regarding fitness of the information for any use other than for East Central Wisconsin Regional Planning Commission business.

Bicycle & Pedestrian Network Improvements

| Omro School District | | | | | | |
|----------------------------|------------------------|----------------|----------------------|------------------------------|-----------------------------------|------------|
| Road Name | From | To | Recommended Facility | Organizations Involved | Schools Impacted | |
| High Priority Connections* | E Scott St. | Jackson Ave. | McKinley Ave. | Sidewalk both sides | City of Omro | All |
| | Harrison Ave. | Tori St. | E Main St. | Sidewalk both sides | City of Omro | All |
| | Jackson Ave Connection | Tori St. | Scott St. | Sidewalk/Path | City of Omro | All |
| | Lincoln Ave. | Justin Dr. | Main St. | Sidewalk both sides | City of Omro | All |
| | McKinley Ave. | Main St. | McKinley Ave. | Sidewalk both sides | City of Omro | All |
| | Tyler St. | Polk St. | E Scott St. | Sidewalk both sides | City of Omro | H.B. Patch |
| | Hawthorne Dr. | Fox Trail | E River Dr. | Sidewalk both sides | City of Omro | OES & MS |
| | E Huron St. | S Webster Ave. | Harrison Ave. | Sidewalk both sides | City of Omro | All |
| | E Ontario St. | S Webster Ave. | Harrison Ave. | Sidewalk both sides | City of Omro | All |
| | Pine St. | E. River Dr. | Fox Trail Dr. | Sidewalk both sides | City of Omro | OES & MS |
| | HWY 116 / Willow St | Whispering Way | Pine St. | Bike Lane/Sidewalk extension | Work with City of Omro and WisDOT | OES & MS |
| | W. River Dr. | Spruce St. | Broderick Rd. | Bike Lane/Sidewalk extension | WisDOT | OES & MS |
| | S Webster Ave. | E Scott St. | Ziesmer Rd. | Sidewalk both sides | City of Omro | All |

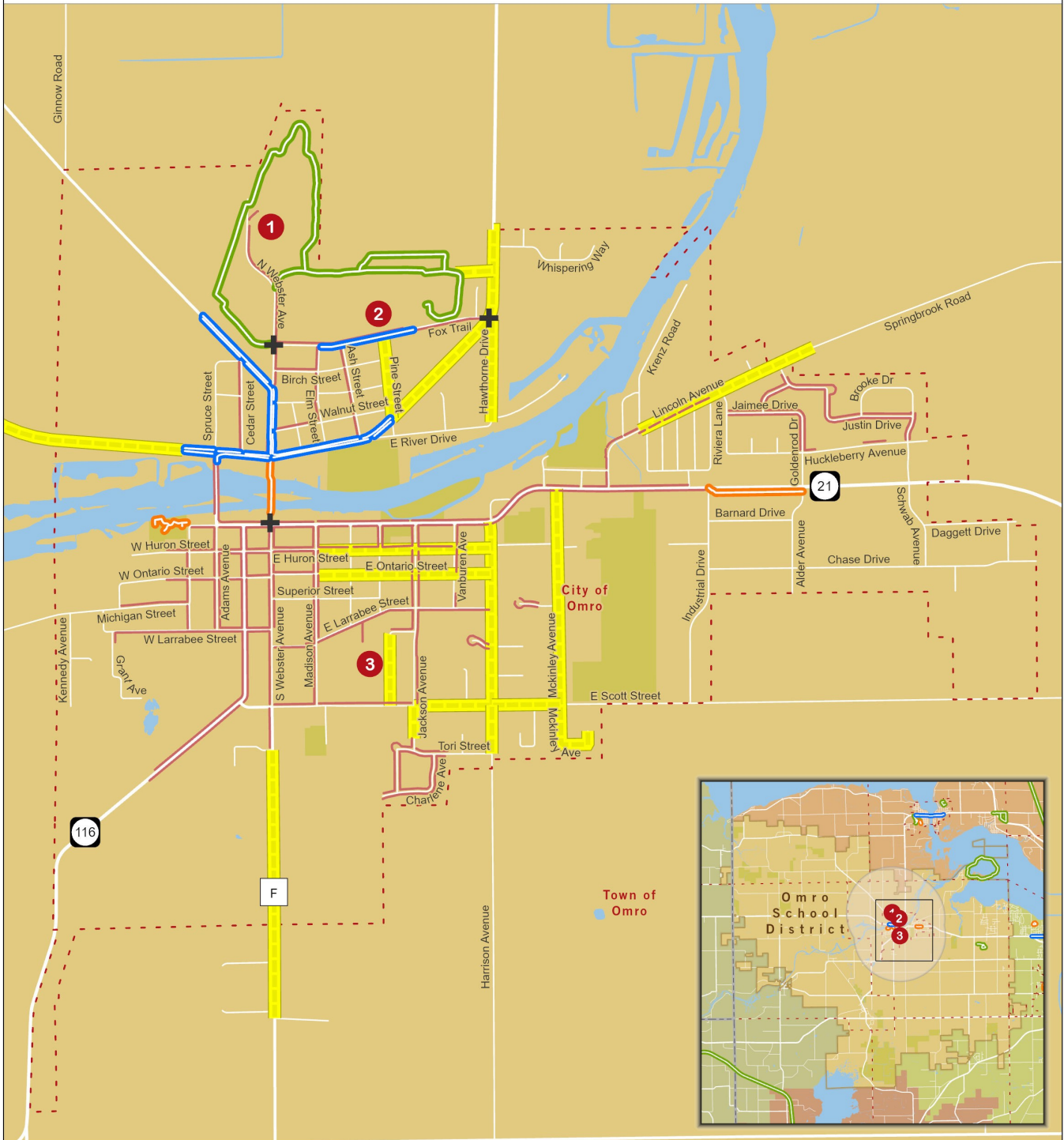
Intersection Improvements

| | | |
|----------------|--|--|
| High Priority* | Main St. & S Webster Ave. (by the pedestrian bridge) | Explore high visibility crosswalk options Please see discussion on page 24 |
| | Fox Trail Dr., Hawthorne Dr., & HWY 116 | |

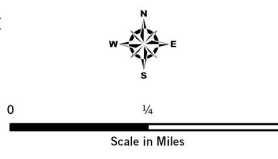
*High priority connections and intersections were identified in the Coalition Meetings.

**It is our recommendation that sidewalks are installed for all future development and street upgrades.

Recommended Bike & Pedestrian Improvements | Omro School District



- | | |
|------------------------------------|-----------------------------------|
| Schools | + Intersection Improvement |
| 1 Omro Elementary | █ Network Improvement |
| 2 Omro Middle & High School | ▬ Existing Network |
| 3 Patch Elementary | ▬ Bike Lane |
| - - - Municipal Boundary | ▬ Paved Trail |
| + Omro School District | ▬ Unpaved Trail |
| | ▬ Sidewalk |



PREPARED NOVEMBER 2021 BY:
 East Central Wisconsin
 Regional Planning Commission
ECWRPC
 Shawano • Waupaca • Waushara • Winnebago

Source:
 Base data provided by Regional Counties, 2021.
 SRTS data and Recommended and Existing Bike/
 Ped Network provided by ECWRPC, 2021.

This data was created for use by the East Central Wisconsin Regional Planning Commission Geographic Information System. Any other use/application of this information is the responsibility of the user and such use/application is at their own risk. East Central Wisconsin Regional Planning Commission disclaims all liability regarding fitness of the information for any use other than for East Central Wisconsin Regional Planning Commission business.

Appendix A: SRTS Coalition Meetings Summary

Safe Routes to School partners met in June and October of 2021 to discuss the local SRTS Action Plan Recommendations. The agenda items and discussion topics from the meetings are outlined below.

Coalition partners included:

| | |
|--------------------------|-----------------------------------|
| Ashley Tracy | ECWRPC |
| Wilhelmina Paustian..... | ECWRPC |
| Katie Livernash..... | ECWRPC |
| Amy Gee..... | School Staff |
| Ken Carley..... | School Safety Grounds Coordinator |
| Steve Bilkey..... | Public Works Director |
| Steve Jungwirth..... | Mayor |
| Mark Levetow..... | MS Principal |
| John Peeters..... | School Resource Officer |
| Dave Wellhoefer..... | Elementary Principal |

Items on the Agenda included:

- Safe Routes to School Program Overview
- Safe Routes to School Action Plan Overview:
 - ⇒ Parent Survey
 - ⇒ Equity Analysis
 - ⇒ Walk and Bike Audits conducted at each school
 - ⇒ Action Plan developed for each school using survey, walk and bike audit data
 - ⇒ Bicycle and Pedestrian network and connections
- Review the Action Plan for each school
- Voice safety concerns around each school
- Review current bicycle and pedestrian network
- Discuss bicycle and pedestrian network improvements

Appendix A: SRTS Coalition Meetings Summary

Three areas were discussed in detail during the meetings as areas of concern in the bicycle and pedestrian network. Improvements to these connections would help pedestrians access the school campuses more safely. The locations, safety concerns, and possible improvements are outlined in the table below.

| LOCATION | CONCERNS | POSSIBLE IMPROVEMENT |
|--|---|---|
| Add a connection from the development on Whispering Way to the school campus | <ul style="list-style-type: none"> ◇ Students cannot walk along HWY 116 and cross at Fox Trail Dr./ HWY 116 intersection safely | Extend the fitness trail along the Lamers Bus Lines property to Whispering Way neighborhood |
| Fox Trail Dr./ Hawthorne Rd./HWY 116 intersection improvements | <ul style="list-style-type: none"> ◇ Low visibility for both drivers and pedestrians | <p>ECWRPC's <i>Safety Action Plan for Implementing Pedestrian Crossing Countermeasures</i> (September 2021) provides suggested countermeasures according to site-specific conditions. Please see the document for more information regarding the following examples:</p> <ul style="list-style-type: none"> ◇ High visibility ladder style crosswalk ◇ Rectangular Rapid Flashing Beacon or Pedestrian Hybrid Beacon ◇ Crosswalk warning signs ◇ Adequate night time lighting levels |
| E. Main St. and S Webster Ave. (near the pedestrian bridge) intersection improvements | <ul style="list-style-type: none"> ◇ This is a key connection to get students from the south side of Main St. to walk and bike to school. ◇ There is currently a crossing guard shortage (2021) | <p>ECWRPC's <i>Safety Action Plan for Implementing Pedestrian Crossing Countermeasures</i> (September 2021) provides suggested countermeasures according to site-specific conditions. Please see the document for more information regarding the following examples:</p> <ul style="list-style-type: none"> ◇ High visibility ladder style crosswalk ◇ Parking restrictions at crosswalk approach ◇ Push activated signal, i.e. Rectangular Rapid Flashing Beacon (RRFB) ◇ Crosswalk warning signs ◇ Adequate night time lighting levels |

Appendix B: Parent Survey Comments

An online survey was sent out to all parents in the Omro School District in May 2021. Below are the comments from the survey.

Education– Related Comments:

I would like to see safe biking/walking be a unit in physical education class, and have them actually bike during class

Kids seem to think they have the right of way most times.

The school does enough for child safety and provides alternatives to walking/riding to school and should not be tasked with more duties. Parents have to take ownership in educating their own children on life skills that go beyond the classroom.

Parents and students do not always stop at the cross walk for students who are walking let alone allow homeowners to get out of their driveways.

Children need to learn basic etiquette. Like respect for pedestrians.

Even if a child does not live in the city, or ride bikes, etc. it's good knowledge to have.

I am a driver every day for my children to and from school and the number of "almost accidents" I've witnessed due to bikers and walkers and other drivers not paying attention is worrisome.

It's a good thing for kids to know. Safety!!

Some children do not pay attention at all to what is going on around them as they bike/walk. That is a little frightening.

I think the busses need to be trained in following general driving laws including stopping for pedestrians and stop signs, I've seen more school bus drivers in Omro break traffic laws putting kids in danger than any parent or even teen driver!! Also, for some ridiculous reason this town has 1 crossing guard.... that is inadequate for the amount of busy streets these kids are crossing to get to school!!

Appendix B: Parent Survey Comments

Facility Improvement—Related Comments:

I wish there were bigger sidewalks along Main Street with terraces between the road and the sidewalk. This would make it safer to ride there.

A crossing guard or stop sign or lights during the time before and after school at Main Street by the walk bridge.

For years, we have begged for a crossing guard at Fox Trail and Webster. People don't pay attention and multiple children have had close calls with drivers rolling through stop signs and not paying attention

My boys walk home. It would be nice to have a crossing guard on the corner of Fox Trail & Webster. Or someone over by the high school.

I can't imagine letting my kids cross HWY 21 unless they were to put in lights that stopped traffic for pedestrians and cyclists

I know in the morning when I drive my kids to OES there is a lot of vehicle traffic at the intersection by the high school. Somehow there needs to be controls at that intersection for kids walking or biking to cross that stop area safely.

I wish there was a cross guard on Main St as well as on River Dr. To me, Main St is a larger problem than River Dr.

We have sidewalks in our neighborhood. It sure I'd be comfortable with them riding on the road.

I ride my bike with my son to school, I'm trying to get him comfortable crossing main street but he just is not comfortable doing it alone. he will be 10 in June and in 4th grade

Wish Omro had sidewalks and safer intersections across busier roads/hwy

I would like to see a light that stops traffic so children/adults can cross Hwy 116

Our street is notorious for people whipping down the hill because it goes to 55 mph shortly after our home. There are other children around here too.

We allowed more when we went to HB patch because it was closer and we don't love them having to cross Hwy 21.

N Webster Ave & E River Dr. Intersection is very busy and a lot of cars do not slow down. Kids really need to understand the importance of crossing at the intersection and not in between intersections.

I do not like that there is no sidewalk or bike path from the Whispering Way subdivision. I also observe children trying to cross Hwy 116 to Fox Trail with great difficulty. It is not a safe environment for children or adults along that stretch of roadway.

It would be great to have a crossing guard at Main st and Webster also.

Lots of cars and BUSES go through the intersection without stopping on Fox Trail and N Webster Ave. Not to mention teenagers speeding. We really need a crossing guard there. There used to be one but not any longer.

Appendix B: Parent Survey Comments

Neighborhood Safety Concern—Related Comments:

Maybe people should know that there are 2 sex offenders on the routes to school, one on Webster, one near Pine Street, would be nice if there could be some walking buddy program or group for those kids walking home from elementary school.

There is one registered sex offender who lives right on the path for safe walk to school. There are a lot of traffic issues such as cars not even stopping or driving too fast.

Our kids are too young to go to school without a chaperone. Also having kids at the different buildings and close drop off times is difficult.

If my daughter had more friends to walk or bike to school with I'd feel more comfortable letting her do it. Safety in numbers.

Miscellaneous Comments:

Omro is a very walkable/bike-able city related to distances (At least for students who live inside the main residential areas.). Adding some regular walking or biking groups to get kids to school could potentially offer some much-needed physical activity and fresh air for our children so they can do better in school and feel better about themselves.

Right now, because of the pandemic, we are driving our kids to school (carpool) however, before then, they have always taken the bus and will probably continue to do so in the future until they can drive.

My children are too young to go by themselves as well. It would not be an option for us.