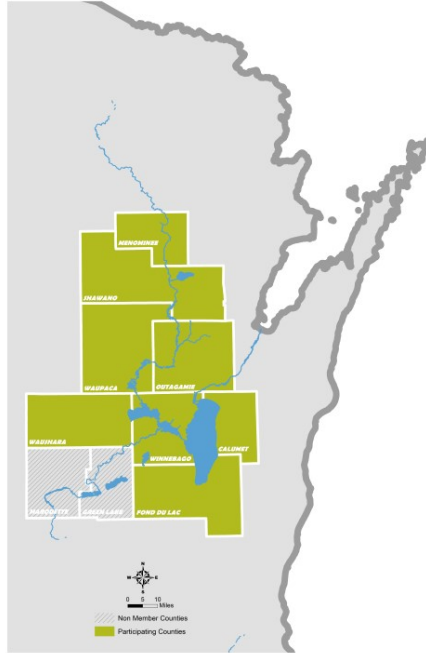


The Regional Safe Routes to School Program Overview



Regional SRTS Mission

Safe Routes to School engages and empowers schools and communities to foster healthy lifestyles through environmental changes and safe walking and bicycling.



Who We Serve

The SRTS program serves K-8th grade schools in the 8-county region of East Central Wisconsin. The map to the left displays our participating counties.

SRTS Funding

Each county in the region pays in to the Commission's levy which matches federal grant funding

80% Federal Funding

+

20% Local Match

= 100% free to schools!

East Central applies for Transportation Alternative Program (TAP) non-infrastructure funds to fund our program

Schools can also apply for TAP funding to help pay for engineering projects around their schools. East Central SRTS staff can help you through the application process!

THE SIX E'S OF THE SAFE ROUTES TO SCHOOL PROGRAM



Education

Providing students and the community with the knowledge and skills to walk and bicycle safely. Educating them about the benefits of walking and biking.



Encouragement

Encouraging students to walk and bicycle through events, activities, and programs.



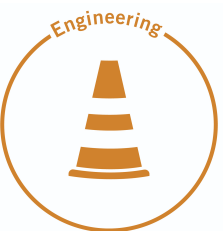
Engagement

All Safe Routes to School initiatives should begin by listening to students, families, teachers, and school leaders and working with existing community organizations, to build intentional, ongoing engagement opportunities into the program structure.



Equity

Ensuring that Safe Routes to School initiatives are benefiting all demographic groups, with particular attention to ensuring safe, healthy, and fair outcomes for low-income students, students of color, students of all genders, students with disabilities, and others.



Engineering

Creating physical improvements to streets and neighborhoods that make walking and bicycling safer, more comfortable, and more convenient.



Evaluation

Assessing which approaches are more or less successful, ensuring that programs and initiatives are supporting equitable outcomes, and identifying unintended consequences or opportunities to improve the effectiveness of each approach.

WALKING AND BIKING EVENTS

International Walk to School Day

A one-day walking event encouraging students to walk to school. This event occurs annually on the first Wednesday in October. Students from more than 40 countries walk to school on the same day!



Winter Walk to School Month

Winter Walk to School Month is held in February and promotes walking to school year-round, even during the cold Wisconsin Winters. Schools are encouraged to participate in our weekly winter walking challenges.



Bike to School Day

A one-day biking event encouraging students to bike to school. This event occurs annually on the first Wednesday in May.



REGIONAL SRTS PROGRAMS



Walking School Bus Program

A Walking School Bus is a group of children who walk together under the supervision of a trained route leader. Walking School Busses can meet at a central location such as a church or park and walk to school together, or they can pick up students at their houses as they walk along a designated route. SRTS staff can help you determine walking routes and create route maps for your program!



Frequent Walker Program

Frequent Walker Programs encourage students to walk before, during, and after school by making it fun and rewarding. This program provides students who cannot walk to school the opportunity to be active during the school day. Students walk along a designated route to track their physical activity.



Youth Engagement Program

The Youth Engagement Program empowers middle and elementary school students, leaders, teachers, and adult facilitators by providing knowledge and resources that help lead activities and events that support active transportation. Youth engagement is about young people being actively involved in addressing issues that affect them personally and they believe are important.

Project RADAR (Reminding All Drivers About Responsibility)

The goal of Project RADAR is to create awareness of safe driving habits around school zones by developing curriculum using radar velocity speed guns. Curriculum materials are developed in math, physics, and career preparedness. Schools can check out a toolkit containing curriculum materials, safety vests, yard signs, and banners.



**A SAFE ROUTES TO SCHOOL
EAST CENTRAL WISCONSIN PARTNERSHIP**

Resources We Provide

Curriculum Materials

- Bicycle Safety Curriculum
- Winter Walk and Snowshoe Curriculum
- Community Planning and the Built Environment Curriculum
- Project RADAR Curriculum



Reservations

- Bicycle fleet
- Snowshoes
- Bicycle blenders
- Radar gun kits for Project RADAR



SRTS Staff Support

- Conduct walk and bike audits to identify safety concerns at and around the school
- Create educational maps such as parent pick-up and drop-off procedure maps
- Assist in implementing walking and bicycling curriculum in the classroom: walkability audits, bike safety, winter walking, Project RADAR, community planning.
- Assist in school siting decisions and parking lot redesigns to accommodate students walking and bicycling



Local School District Action Plans

- Conducting bike and walk audits to identify safety hazards for students walking and biking
- Conducting student travel tallies and parent surveys
- Mapping current and recommended bike and pedestrian infrastructure maps
- Creating parent pick-up and drop-off procedure maps
- Event and program participation

