

Appleton Area School District

Safe Routes to
School Action Plan

DRAFT

Abstract

TITLE: Appleton Area School District (AASD) Safe Routes to School Action Plan

CONTACT: Melissa Kraemer Badtke

AUTHORS: Ashley Tracy, Safe Routes to School Planner
Melissa Kraemer Badtke, Principal Transportation Planner

SUBJECT: Safe Routes to School Action Plan

DATE: May 2020

PLANNING AGENCY: East Central Wisconsin Regional Planning Commission
400 Ahnaip Street, Suite 100
Menasha, WI 54952
www.ecwrpc.org

The Appleton Area School District Safe Routes to School Action Plan describes the existing walking and bicycling conditions around schools within the school district. This action plan also includes future community improvements based on these conditions and information gathered by parents of students.

Table of Contents

1.1 Safe Routes to School and AASD Background Information.....	1
1.2 The Six E's of Safe Routes to School.....	2
1.3 Appleton Area School District Boundary Maps	3
1.4 District Wide Parent Survey Results	5
1.5 Event and Program Descriptions.....	6
1.6 Current Event and Program Participation	7
1.7 School District Equity Analysis	8
School District Equity Analysis Recommendations	9
2.1 Bicycle & Pedestrian Infrastructure Facilities Maps.....	12
2.2 Bicycle & Pedestrian Infrastructure Recommendations	14
2.3 District-Wide Recommendations	22
3.1 Elementary School Educational & Enforcement Recommendations	
Appleton Public Montessori School Action Plan	23
Badger Elementary School Action Plan	25
Berry Elementary School Action Plan	27
Classical School Action Plan	29
Columbus Elementary School Action Plan	31
Edison Elementary School Action Plan.....	33
Einstein Middle School Action Plan.....	35
Ferber Elementary School Action Plan.....	37
Foster Elementary School Action Plan.....	39
Franklin Elementary School Action Plan.....	41
Highlands Elementary School Action Plan.....	43
Horizons Elementary School Action Plan.....	45
Houdini Elementary School Action Plan.....	47
Huntley Elementary School Action Plan.....	49
Jefferson Elementary School Action Plan.....	51
Johnston Elementary School Action Plan.....	53
Kaleidoscope Academy School Action Plan	55
Lincoln Elementary School Action Plan	57
Madison Middle School Action Plan	59
McKinley Elementary School Action Plan	61
Richmond Elementary School Action Plan	63
Wilson Middle School Action Plan.....	65
4.1 Appendices	
Einstein, Ferber, Classical Campus Recommendations	67

Safe Routes to School Background Information

The East Central Wisconsin Regional Safe Routes to School (SRTS) Program focuses on engaging and empowering schools and communities to foster healthy lifestyles through environmental changes and safe walking and bicycling. By working to make it safer and more appealing for students in grades K-8 to walk and bike to school, the Regional SRTS Program is continually making strides to improve childhood health, reduce traffic congestion and pollution, and create more livable communities.

Appleton Area School District Background Information

This Action Plan identifies current transportation behaviors within the Appleton Area School District. The coalition has identified known walking, bicycling, and driving barriers, and potential engineering and programmatic strategies to address those barriers. This Action Plan is available for use by the City of Appleton, Village of Little Chute, and the Town of Grand Chute parents, students, and community members to guide the communities work on Safe Routes to School.

The Appleton Area School District (AASD) has a rich, 166-year history of educational excellence, coupled with a commitment to continue to improve their ability to meet the educational needs of present and future students. The AASD strives to address the needs of all learners and provide graduating students with the skills and knowledge to successfully pursue the higher education essential for their chosen career paths.



District Transportation Policies

The Appleton Area School District provides transportation for students who reside outside of the city limits and two miles from their schools, for students who reside within the city limits but attend a school outside of the city which is two or more miles from their home, (for students who are placed in an Exceptional Educational Needs (EEN) program outside of their home attendance area, also for students who attend EEN programs in their home attendance area if the Multidisciplinary Team deems transportation necessary for the safety of the child) and for students whose routes to their schools are found to be unusually hazardous. Students with physically handicapping conditions, both temporary and permanent, will be provided transportation to and from school regardless of where their program is located. For more information visit the AASD website: <https://aasd.k12.wi.us/>.

The 6 E's of Safe Routes to School

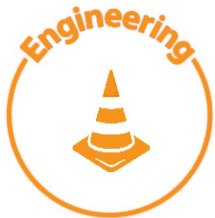
Comprehensive Safe Routes to School initiatives have been shown to be more effective at increasing bicycling and walking to school and reducing injuries. The Regional Safe Routes to School program is based on these principals of the six E's.



Education— Providing students and the community with the skills to walk and bicycle safely, educating them about the benefits of walking and bicycling, and teaching them about the broad range of transportation choices.



Encouragement— Generating enthusiasm and increased walking and bicycling for students through events, activities, and programs.



Engineering— Creating physical improvements to streets and neighborhoods that make walking and bicycling safer, more comfortable, and more convenient.



Enforcement— Deterring unsafe traffic behaviors and encouraging safe habits by people walking, bicycling, and driving in school zones, school neighborhoods, and along school routes.



Evaluation— Assessing which approaches are more or less successful, ensuring that programs and initiatives are supporting equitable outcomes, and identifying unintended consequences or opportunities to improve the effectiveness of each approach. Events and programs will be evaluated on a regular basis.



Equity— Ensuring that Safe Routes to School initiatives are benefiting all demographic groups, with particular attention to ensuring safe, healthy, and fair outcomes for low-income students, students of color, students of all genders, students with disabilities, and others.

School District Boundaries and Locations

Appleton Area School District - North

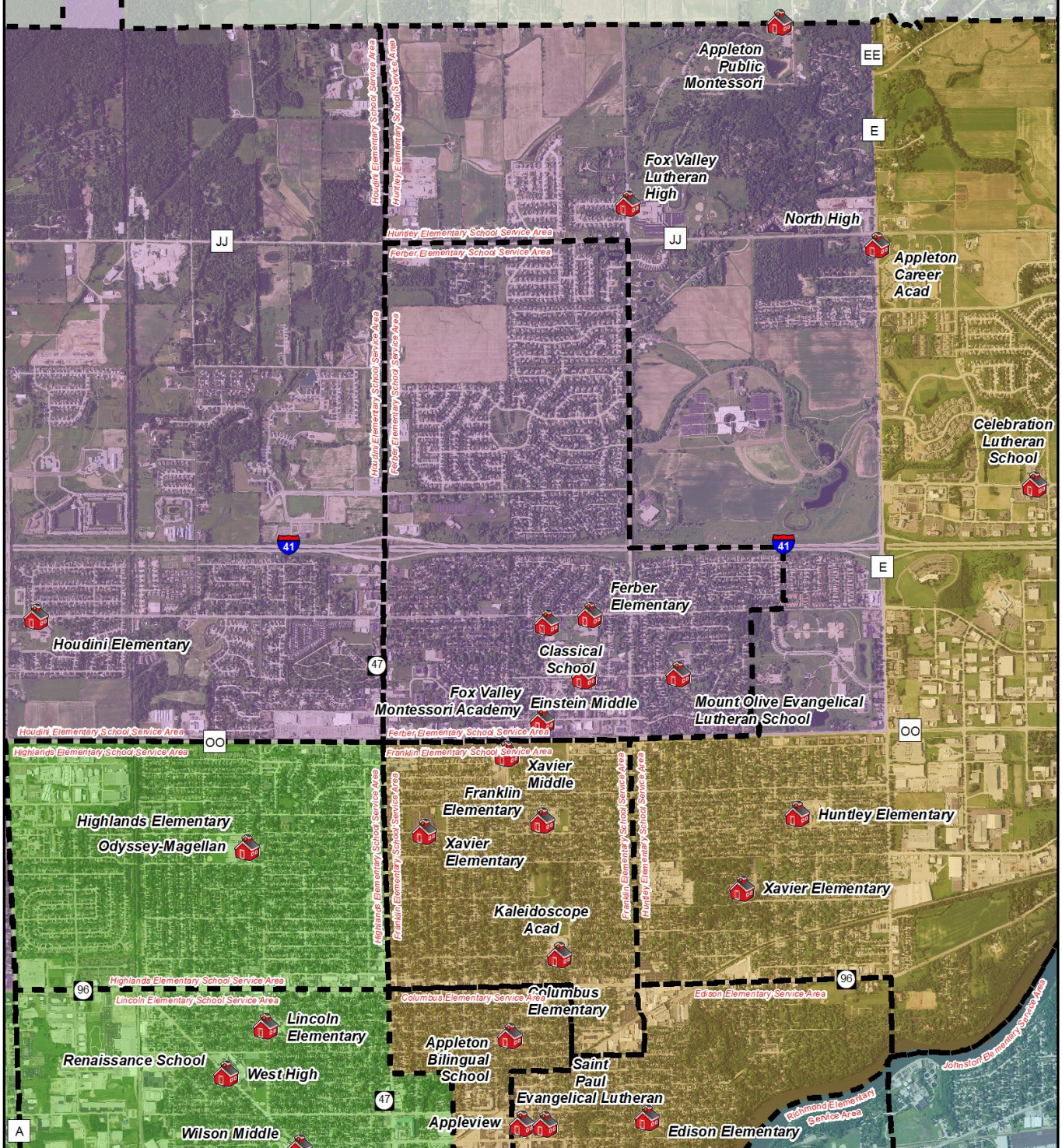
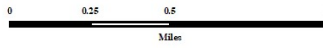
Source:
Base data provided by Outagamie County 2017.
SRTS data provided by ECWRPC 2019.

This data was created for use by the East Central Wisconsin Regional Planning Commission Geographic Information System. Any other use or application of this information is the responsibility of the user and such use application is at their own risk. East Central Wisconsin Regional Planning Commission disclaims all liability regarding fitness of the information for any use other than for East Central Wisconsin Regional Planning Commission business.

PREPARED FEBRUARY 2020 BY:



- Schools
- Appleton Area School District
- Elementary School Boundaries
- Einstein Middle School
- Madison Middle School
- Roosevelt Middle School
- Wilson Middle School





Appleton Area School District

Parent Survey Results

Total Number of Surveys: 205

Top 5 Reasons Parents ALLOW Their Child to Walk or Bike to School

- 1) Distance
- 2) Sidewalks or pathways
- 3) Convenience
- 4) Weather
- 5) Safety of intersections & crossings

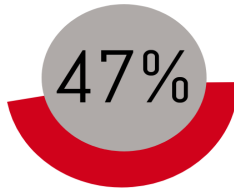
Top 5 Reasons Parents DO NOT ALLOW Their Child to Walk or Bike to School

- 1) Safety concerns of intersections & Crossings
- 2) Amount of traffic
- 3) Speed of traffic
- 4) Distance
- 5) Lack of adults to walk or bike with

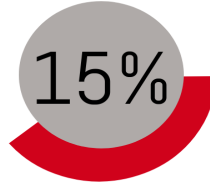
Top 5 Modes of Transportation Students Use to Get to School

- 1) Family Vehicle
- 2) Walk
- 3) Bicycle
- 4) School Bus
- 5) Other

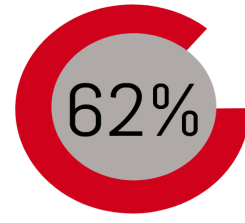
Student Transportation



Driven to School



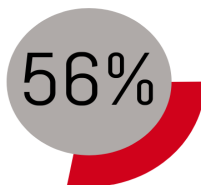
Use School Bus



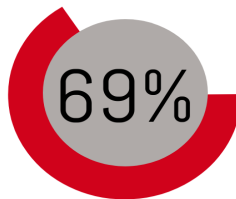
Total Vehicular



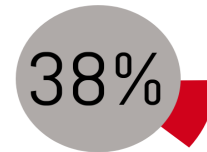
Student Transportation Alternatives



Students allowed to walk & bike to school



Believe their child would benefit from walking and bicycling safety education



Percent of students walking & biking to school

SRTS Event and Program Descriptions



Walk to School Day— A global event that involves communities from more than 40 countries walking and bicycling to school on the same day. This event occurs annually on the first Wednesday in October.



Bike to School Day— Focuses on increasing bicycle safety and encourages students to bicycle to school. Bike to School Day typically falls on the second Wednesday in May.



Winter Walk to School Month— This event is held in February and promotes walking to school year-round, even during the cold Wisconsin



Walking School Bus Program— Is a group of children who walk to school together under the supervision of a trained route leader.



Frequent Walker Program— Is a walking at school program and it encourages students to walk before, during, and after school by making it fun and rewarding.



Youth Engagement— Empowers elementary and middle school students, leaders, teachers, and adult facilitators by providing knowledge and resources to help lead activities and events that support active transportation.



Project RADAR (Reminding All Drivers About Responsibility)— Creates awareness about safe driving habits around school zones by developing educational materials utilizing radar velocity speed guns.

AASD Current Event and Program Participation

2020

School Name	Events			Programs			
	Walk to School Day	Winter Walk to School	Bike to School Day	Walking School Bus Program	Frequent Walker Program	Youth Engagement Program	Project RADAR
Appleton Public Montessori			X				
Badger Elementary		X					
Berry Elementary	X		X				
Classical School							
Columbus Elementary							
Edison Elementary	X	X	X			X	
Ferber Elementary			X				
Foster Elementary	X				X		
Franklin Elementary	X		X				
Highlands Elementary	x						
Horizons Elementary	X		X	X			
Houdini Elementary							
Huntley Elementary	X		X				
Jefferson Elementary		X			X		
Johnston Elementary	X	X	X	X			
Kaleidoscope Academy							
Lincoln Elementary							
McKinley Elementary	X						
Richmond Elementary	X		X				
Einstein Middle							
Madison Middle							
Wilson Middle							

AASD Safe Routes to School Equity Analysis

The Safe Routes to School Equity Analysis identifies schools that would benefit from additional resources to promote safe walking and bicycling. The percent of students receiving free and reduced cost lunch, the median household income, and the percent of arterials a half a mile around the school were collected and analyzed to identify the top five priority schools within the Appleton Area School District. These data sets were evaluated because data shows that people walking and bicycling in low-income communities suffer from higher injury and fatality rates than the general population. Major arterial roadways and highways are also far more concentrated in low-income areas. By identifying these schools at the highest risk we can work to make walking and bicycling to school safe for all students.

School Name	Percent of Students Receiving Free and Reduced Cost Lunch	Median Household Income	Percent Arterials (Minor and Principal)	Equity Needs Score
Wilson Middle School	71	\$50,518	31.07	15
Columbus Elementary School	95	\$44,192	35.19	15
Horizons Elementary School	71	\$57,204	38.67	13
Edison Elementary School	55	\$54,576	33.62	13
Badger Elementary School	71	\$55,085	52.03	13
McKinley Elementary School	71	\$66,124	31.77	11
Lincoln Elementary School	71	\$46,689	22.95	11
Jefferson Elementary School	71	\$52,084	19.90	11
Richmond Elementary School	45	\$57,482	26.07	9
Johnston Elementary School	71	\$61,597	24.69	9
Highlands Elementary School	63	\$45,884	14.76	9
Foster Elementary School	51	\$56,510	29.44	9
Madison Middle School	46	\$66,111	28.03	7
Houdini Elementary School	30	\$71,910	34.91	7
Franklin Elementary School	51	\$56,296	23.79	7
Huntley Elementary School	28	\$73,304	26.37	5
Ferber Elementary School	32	\$76,916	29.44	5
Einstein Middle School	24	\$76,690	28.13	5
Berry Elementary School	20	\$96,557	26.09	5

School District Equity Analysis Recommendations

Wilson Middle School, Columbus Elementary School, Horizons Elementary School, Edison Elementary School, and Badger Elementary School were the five schools identified in the high priority need of the Safe Routes to School Equity Analysis. The charts are on page nine and ten display each schools current participation in the Safe Routes to School program, what events and programs are recommended for those schools to participate in, major and minor arterials located a half a mile from the school, and recommended bicycle and pedestrian infrastructure to improve the safety of students walking and bicycling. This data can be used to improve the safety of students walking and bicycling to these schools.

School Name	Current Participation	Recommended Events and Programs	Arterials Located 1/2 Mile From School	Bicycle/Pedestrian Recommended Infrastructure
Wilson Middle School	Not currently participating	Walk to School Day Winter Walk to School Month Bike to School Day Bicycle Curriculum	Urban Principal Arterial: STH 125 STH 47 Urban Minor: N Badger Ave. S Mason St.	Bike lanes on Franklin St. from Wilson Middle School to Richmond St.
Columbus Elementary School	Not currently participating	Walk to School Day Winter Walk to School Month Bike to School Day	Urban Principal Arterial: STH 47 Urban Minor: N Oneida St. E Wisconsin Ave. N Appleton St. W Harris St. N Morrison St.	Bike lanes on Drew St. from STH 96 to CTH 00
Horizons Elementary School	Walk to School Day Bike to School Day Walking School Bus Frequent Walker program	Winter Walk to School Day	Urban Principal Arterial: STH 441 Urban Minor: E Plank Rd. Lake Park Rd.	WE Energies Trail from Oneida St. to Eisenhower Dr. Sidewalk on Berryfield Ln. from Hulke Dr. to Elderberry Ln Bike lanes on S Telulah Ave. from Calumet St. to Orchard Blossom Dr.

School District Equity Analysis Recommendations

School Name	Current Participation	Recommended Events and Programs	Arterials Located 1/2 Mile From School	Bicycle/Pedestrian Recommended Infrastructure
Edison Elementary School	<p>Walk to School Day</p> <p>Winter Walk to School Month</p> <p>Bike to School Day</p> <p>Youth Engagement (sidewalk painting project)</p>	<p>Walking School Bus Program</p> <p>Frequent Walker program</p>	<p>Urban Principal Arterial: E College Ave.</p> <p>Urban Minor: N and S Lawe St. N Morrison St.</p>	No current recommendations
Badger Elementary School	<p>Winter Walk to School Month</p>	<p>Walk to School Day</p> <p>Bike to School Day</p> <p>Walking School Bus or Frequent Walker programs</p>	<p>Urban Principal Arterial: W College Ave. STH 41</p>	<p>Sidewalks on CTH A from STH 96 to Everett St.</p> <p>Sidewalks on W 2nd St. from S Perkins St. to S Whitman Ave.</p> <p>Sidewalks on W Charles St. from S Perkins St. to S Bartell Dr.</p> <p>Sidewalks on S Whitman Ave from S Spencer St. to W 2nd St.</p> <p>Sidewalks on S Bartell Dr. from S Prospect to W Pine St.</p> <p>Trail on N Bluemound Dr. from W Spencer St. to STH 96</p> <p>Sidewalk on W Spencer St. from west of HWY 41 to S Whitman Ave.</p>

Bicycle & Pedestrian Network

Appleton Area School District - North

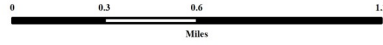


School Location

Off Road Multi Use Path

Bicycle Lane

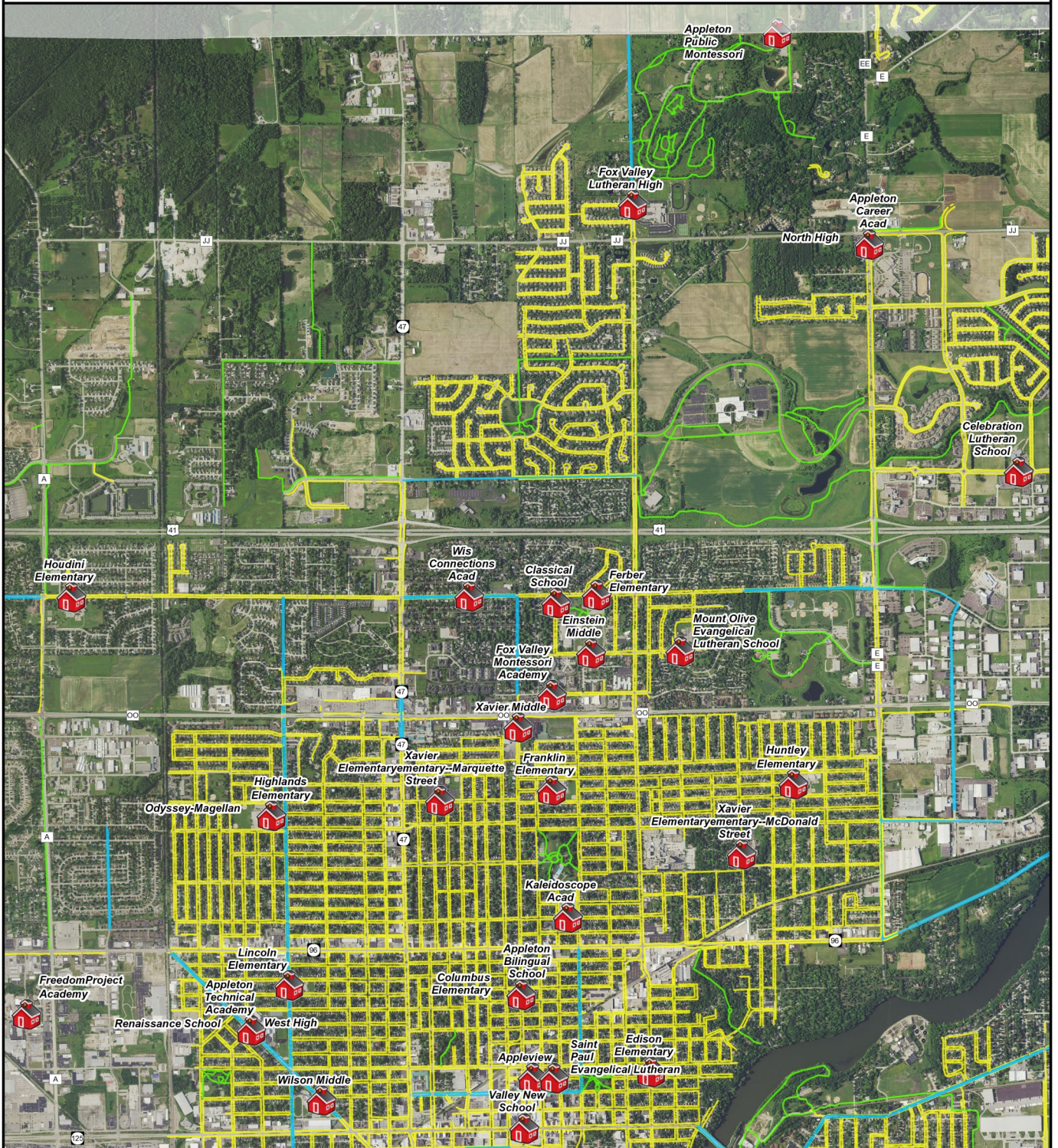
Sidewalk



Source:
Base data provided by Outagamie County 2017.
SRTS data provided by ECWRPC 2017.

This data was created for use by the East Central Wisconsin Regional Planning Commission Geographic Information System. Any other use/application of this information is the responsibility of the user and such use/application is at their own risk. East Central Wisconsin Regional Planning Commission disclaims all liability regarding fitness of the information for any use other than for East Central Wisconsin Regional Planning Commission business.

PREPARED DECEMBER 2019 BY:



AH P:\138x-Regional SRTS\1381_Regional_Implementation\Local_SRTS_Coalitions\AppletonSRTS2019 Update\MXD\AASD_Bicycle_Pedestrian_Network_P.mxd

Bicycle & Pedestrian Network

Appleton Area School District - South

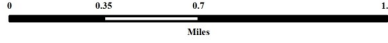


School Location

Off Road Multi Use Path

Bicycle Lane

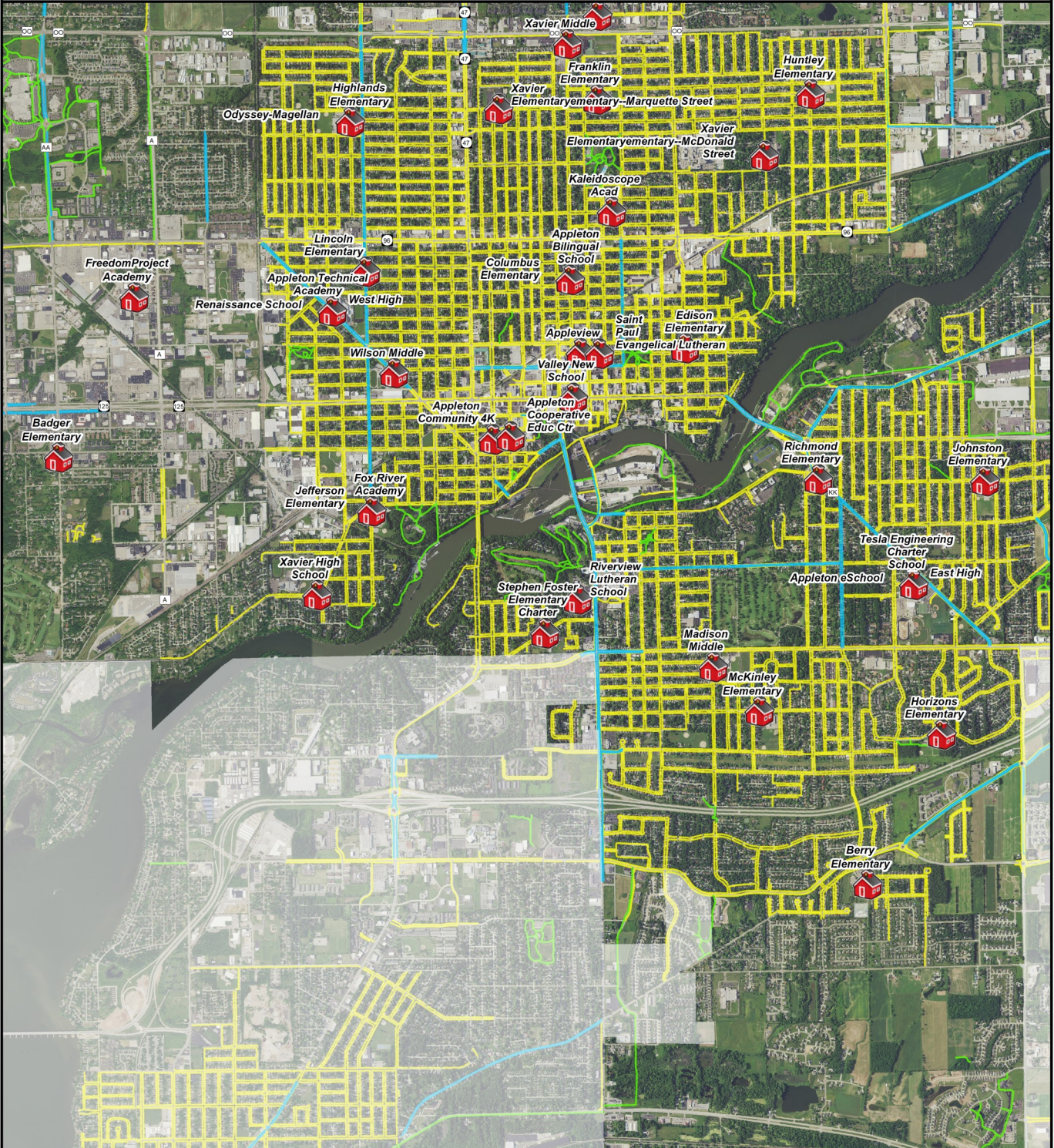
Sidewalk



Source:
Base data provided by Outagamie County 2017.
SRTS data provided by ECWRPC 2017.

This data was created for use by the East Central Wisconsin Regional Planning Commission Geographic Information System. Any other use/application of this information is the responsibility of the user and such use/application is at their own risk. East Central Wisconsin Regional Planning Commission disclaims all liability regarding fitness of the information for any use other than for East Central Wisconsin Regional Planning Commission business.

PREPARED DECEMBER 2019 BY:



Bicycle & Pedestrian Recommendations

Northwest Quadrant

Road Name	From	To	Recommended Facility	Responsible Organization	Schools Impacted
County Highway JJ	Wren Street	CTH E	Trail facility	Outagamie County, Town of Grand Chute, City of Appleton	Fox Valley Lutheran High School; Appleton Public Montessori; Appleton North High School
Wren Street	County Road JJ	1/4 mile south on Wren Road	Trail facility	Town Grand Chute	Fox Valley Lutheran High School; Appleton Public Montessori; Appleton North High School; Houdini Elementary School
Capitol Drive	Lynndale	County HWY E	Bike Lanes	Town Grand Chute; City of Appleton	Houdini Elementary School; Classical School; Ferber Elementary School; Einstein Middle School
E. Florida Ave	Oneida Street	Durkee Street	Sidewalks	City of Appleton	Classical School; Ferber Elementary School; Einstein Middle School
Oneida Street	Capital Drive	County Highway OO	Sidewalks	City of Appleton	Classical School; Ferber Elementary School; Einstein Middle School
County Highway OO	County Highway A	To N. Mason Street	Sidewalks	Town of Grand Chute; Outagamie County	Houdini Elementary School; Highlands Elementary School; Franklin Elementary School; Huntley Elementary School
STH 47	County Highway JJ	Evergreen Drive	Trail facility and bike lane	WisDOT; Outagamie County; Town of Grand Chute	Ferber Elementary School, Einstein Middle School, Classical School, Appleton North High School
N. Orion Lane	From sidewalk terminus	Elsner Road	Sidewalks	Town of Grand Chute	Houdini Elementary School
County Highway A	State Highway 96	Everett Street	Sidewalks	Outagamie County, Town of Grand Chute, City of Appleton	Badger Elementary School
Drew Street	State Highway 96	County Highway OO	Bike Lanes	City of Appleton	Columbus Elementary School; Fox Valley Montessori Academy; Kaleidoscope Academy; Appleton Bilingual School

Existing Facilities

-  School Locations
-  Bike Lane
-  Trail
-  Sidewalk

Suggested Facilities

-  Bike Lane
-  Trail
-  Sidewalk

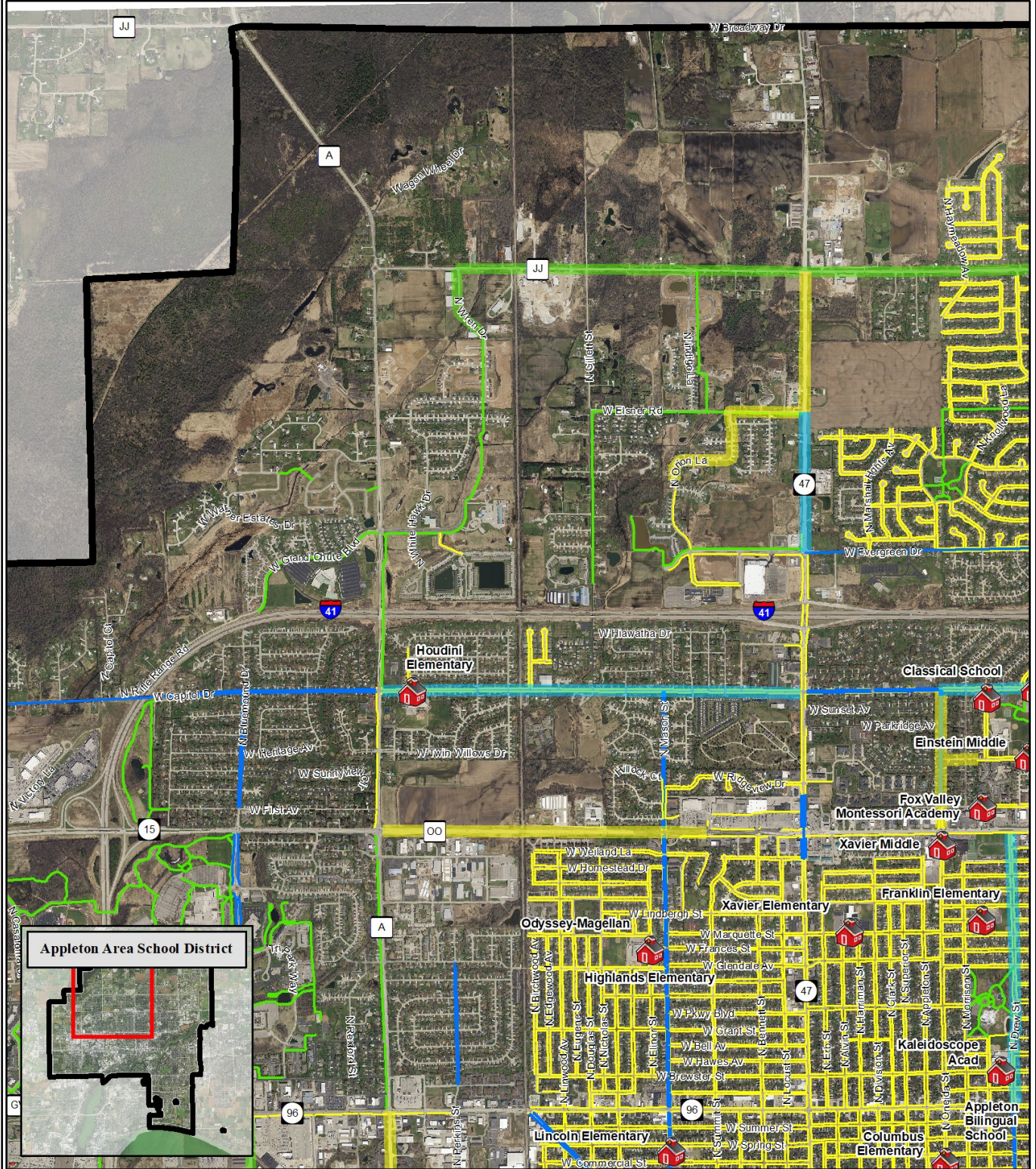
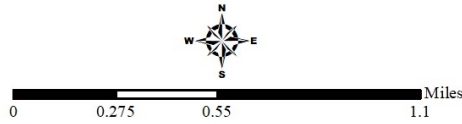
Bicycle & Pedestrian Network Gap Analysis

Northwest Quadrant of Appleton Area School District

Source:
Bicycle & Pedestrian Facilities E CWRPC 2019
Base data provided by Outagamie County 2018

This data was created for use by the East Central Wisconsin Regional Planning Commission Geographic Information System. Any other use/application of the information is the responsibility of the user and such use/application is at their own risk. East Central Wisconsin Regional Planning Commission disclaims all liability regarding fitness of the information for any use other than for East Central Wisconsin Regional Planning Commission business.

PREPARED FEBRUARY 2020 BY:



Bicycle & Pedestrian Recommendations

Northeast Quadrant

Road Name	From	To	Recommended Facility	Responsible Organization	Schools Impacted
County Highway JJ	Meade Street	Holland Road	Trail facility	Outagamie County, City of Appleton	Appleton North High School

Existing Facilities

-  School Locations
-  Bike Lane
-  Trail
-  Sidewalk

Suggested Facilities

-  Bike Lane
-  Trail
-  Sidewalk

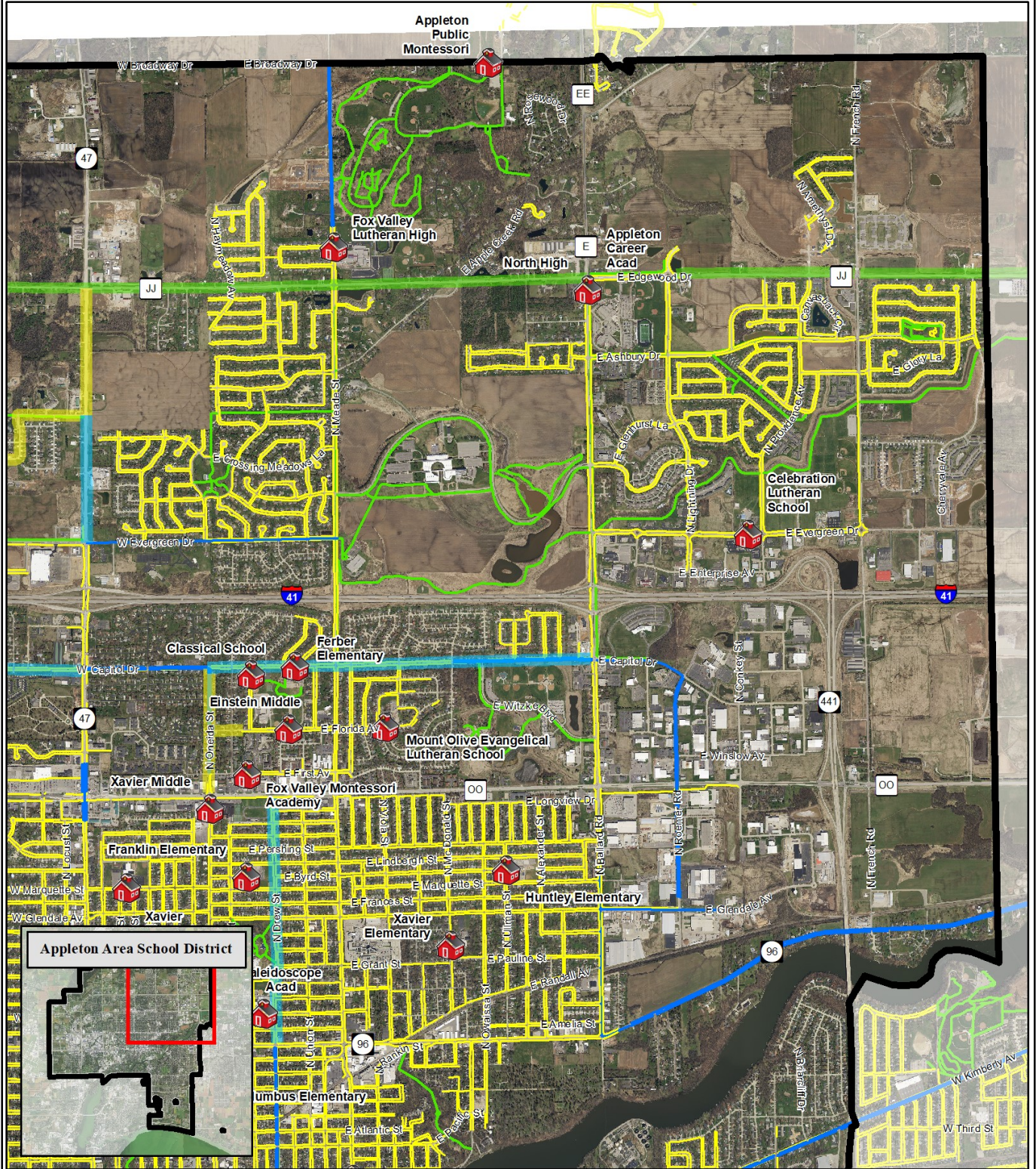
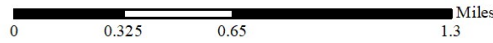
Bicycle & Pedestrian Network Gap Analysis

Northeast Quadrant of Appleton Area School District

Source:
Bicycle & Pedestrian Facilities ECWRPC 2019
Base data provided by Outagamie County 2018

This data was created for use by the East Central Wisconsin Regional Planning Commission Geographic Information System. Any other use application of this information is the responsibility of the user and such use application is at their own risk. East Central Wisconsin Regional Planning Commission disclaims all liability regarding fitness of the information for any use other than for East Central Wisconsin Regional Planning Commission business.

PREPARED FEBRUARY 2020 BY:



Bicycle & Pedestrian Recommendations

Southwest Quadrant					
Road Name	From	To	Recommended Facility	Responsible Organization	Schools Impacted
Spencer Street	West of HWY 41	S. Whitman Ave.	Sidewalk	Town of Grand Chute	Badger Elementary School; Jefferson Elementary School
Franklin Street	Wilson Middle School	State Highway 47	Bike Lanes	City of Appleton	Wilson Middle School; West High School; Lincoln Elementary School
W. 2nd Street	S. Perkins Street	S. Whitman Avenue	Sidewalk	City of Appleton	Badger Elementary School; Jefferson Elementary School
W. Charles Street	S. Perkins Street	S. Bartell Drive	Sidewalk	City of Appleton	Badger Elementary School; Jefferson Elementary School
Whitman Ave	S. Spencer Street	W. 2nd Street	Sidewalk	City of Appleton	Badger Elementary School; Jefferson Elementary School
S. Bartell Drive	S. Prospect Ave.	W. Pine Street	Sidewalk	City of Appleton	Badger Elementary School; Jefferson Elementary School
N. Bluemound Dr.	W Spencer St.	STH 96	Trail	Town of Grand Chute	Badger Elementary School

Existing Facilities

-  School Locations
-  Bike Lane
-  Trail
-  Sidewalk

Suggested Facilities

-  Bike Lane
-  Trail
-  Sidewalk

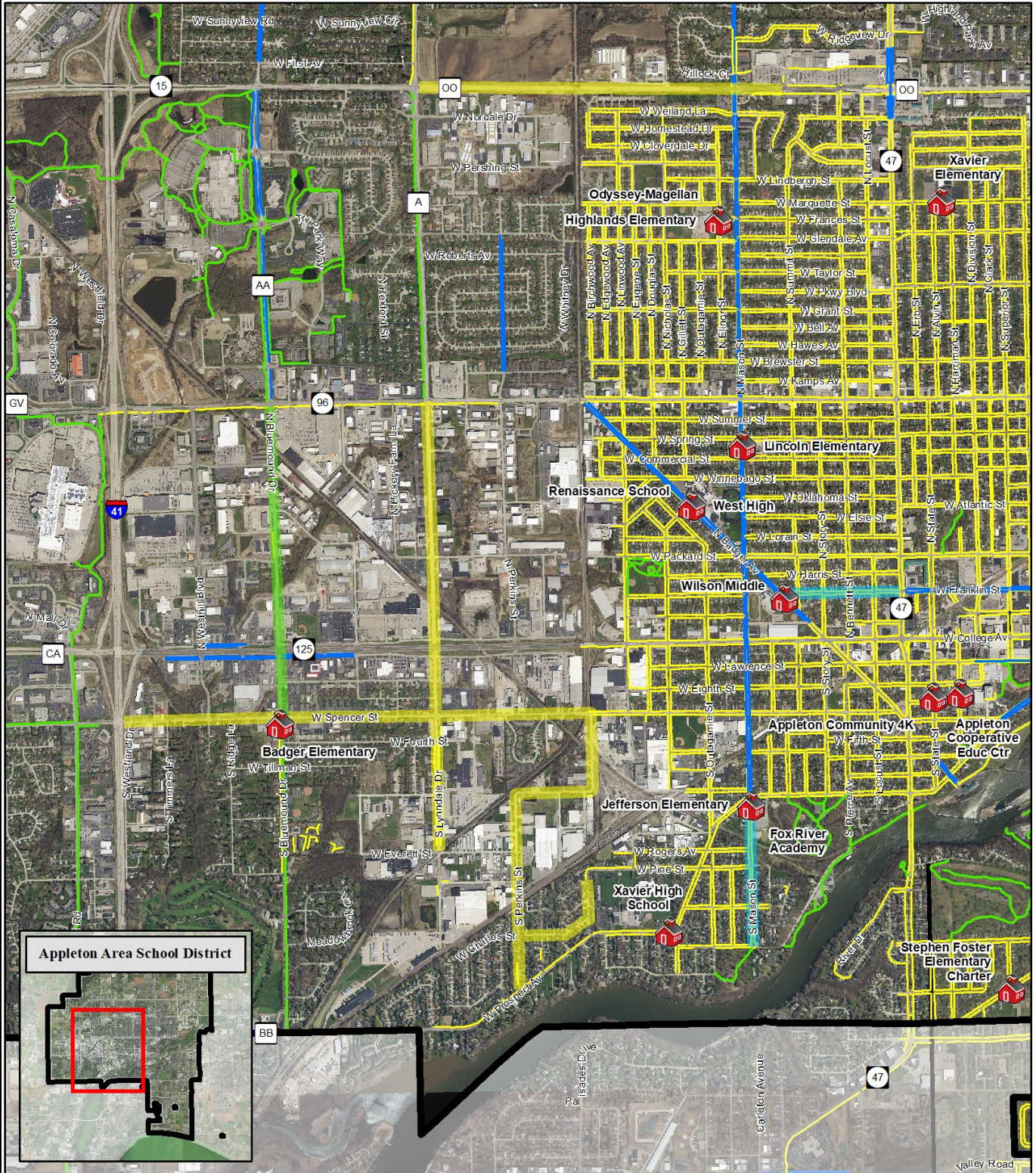
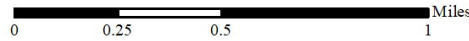
Bicycle & Pedestrian Network Gap Analysis

Southwest Quadrant of Appleton Area School District

Source:
Bicycle & Pedestrian Facilities E CWRPC 2019
Base data provided by Outagamie County 2018

This data was created for use by the East Central Wisconsin Regional Planning Commission Geographic Information System. Any other use/application of this information is the responsibility of the user and such use/application is at their own risk. East Central Wisconsin Regional Planning Commission disclaims all liability regarding fitness of the information for any use other than for East Central Wisconsin Regional Planning Commission business.

PREPARED FEBRUARY 2020 BY:



Bicycle & Pedestrian Recommendations

Southeast Quadrant					
Road Name	From	To	Recommended Facility	Responsible Organization	Schools Impacted
Plank Road	Manitowoc Road	Chestnut St.	Trail	Village of Fox Crossing/City of	Berry Elementary School
Manitowoc Road	Plank Road	Lake Park Road	Trail	Village of Fox Crossing/City of Menasha	Berry Elementary School
WE Energies Trail	Oneida Street	Eisenhower Drive	Trail	City of Appleton	Horizons Elementary School; McKinley Elementary School; Madison Middle School
Berryfield Lane	Hulke Drive	Elderberry Ln	Sidewalks	City of Appleton	Horizons Elementary School
S. Telulah Avenue	Calumet Street	Orchard Blossom Drive	Bike lanes	City of Appleton	Berry Elementary School; Horizons Elementary School; McKinley Elementary School
S. Schaefer Street	Future WE Energies Trail	Schaefer Circle	Bike lanes	City of Appleton	Horizons Elementary School; McKinley Elementary School; Madison Middle School

Existing Facilities

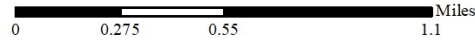
-  School Locations
-  Bike Lane
-  Trail
-  Sidewalk

Suggested Facilities

-  Bike Lane
-  Trail
-  Sidewalk

Bicycle & Pedestrian Network Gap Analysis

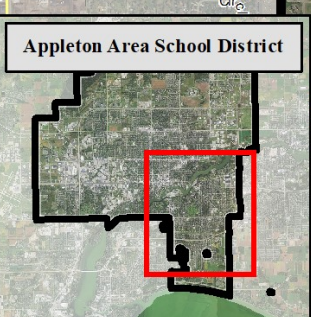
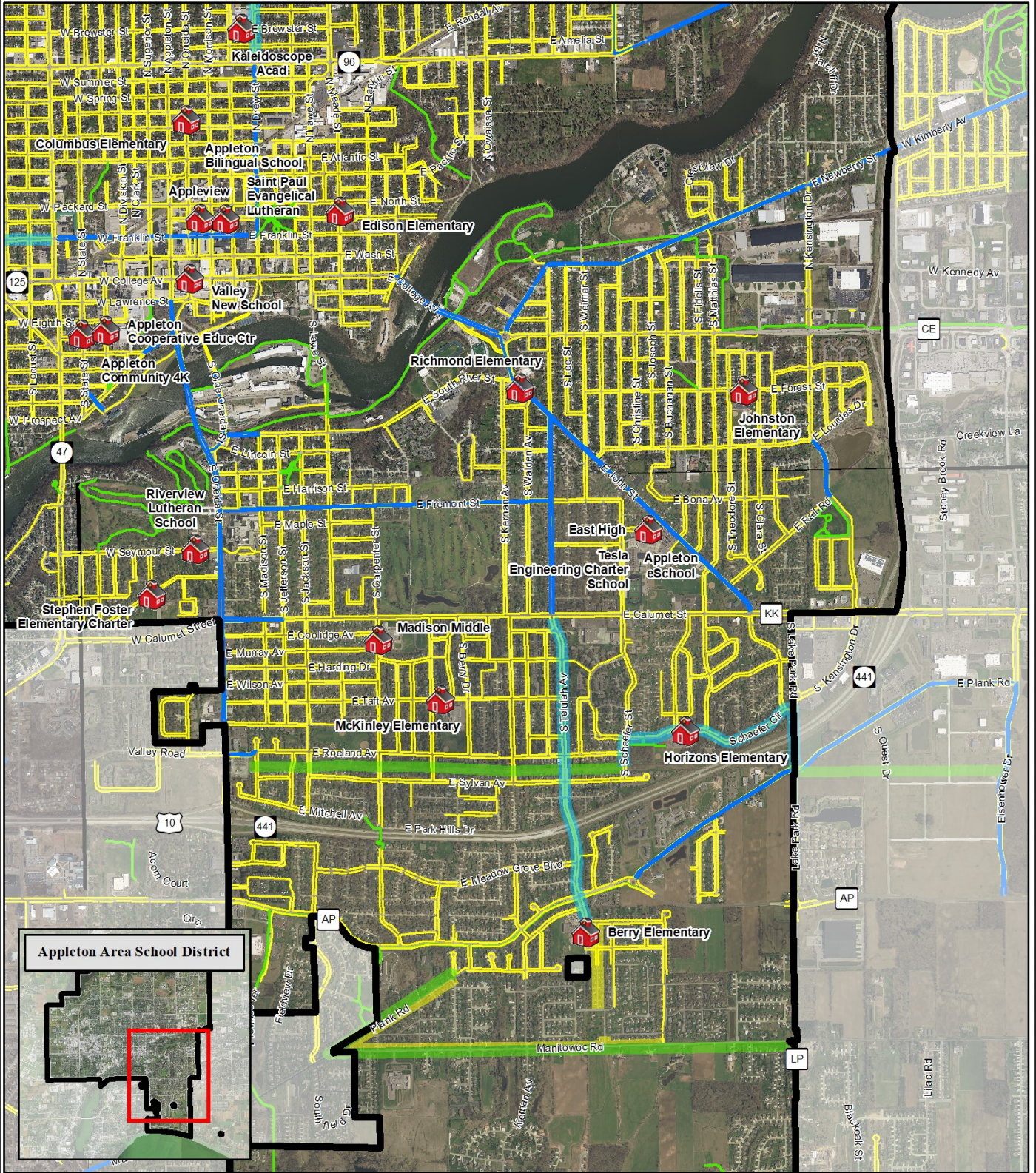
Southeast Quadrant of Appleton Area School District



Source:
Bicycle & Pedestrian Facilities ECWRPC 2019
Base data provided by Outagamie County 2018

This data was created for use by the East Central Wisconsin Regional Planning Commission Geographic Information System. Any other use/application of this information is the responsibility of the user and such use/application is at their own risk. East Central Wisconsin Regional Planning Commission disclaims all liability regarding fitness of the information for any use other than for East Central Wisconsin Regional Planning Commission business.

PREPARED FEBRUARY 2020 BY:



District-Wide Recommendations

Uncontrolled Intersections

Schools with adjacent intersections that are under controlled or uncontrolled can cause safety concerns in neighborhood schools that have a large number of students walking and biking. Work with the City of Appleton staff to evaluate uncontrolled or under controlled intersections adjacent to the schools to see if stop signs are warranted.

Signage and Parking Improvements

Work with the City of Appleton to evaluate parking signage at each of the schools to make sure they are consistent and clear. Work with the City of Appleton and the Appleton Area School District staff to provide educational materials on the designated parking areas.

Work with the City of Appleton Police Department to create an enforcement plan to decrease the number of parking violations during pick-up and drop-off times. There were a high volume of parents not obeying the no parking signage. We also suggest creating parent pick-up and drop-off maps to educate parents on proper procedures.

Limit parking on both sides of the street to reduce congestion on the roadway for vehicles, busses, and emergency vehicles. This will also reduce the number of students midblock crossing to get across the street therefore improving safety.

It is recommended to make pick-up and drop-off loading zones, bus loading zones, parking, and no parking zones consistent on each block surrounding the schools to reduce confusion and parking violations.

Crosswalk Improvements

Paint ladder style crosswalks adjacent to the schools to improve visibility of students crossing the street and to improve traffic safety by creating a more predictable crossing pattern. Review crosswalks and curb cuts adjacent to the schools to ensure they are American with Disabilities Act (ADA) compliant.

Parking Lot Improvements

When updating parking lots at each of the schools, reference this action plan to address safety concerns and contact the Safe Routes to School program staff to assist in reviewing plans for safety and bicycle and pedestrian recommendations.

Crossing Guard Locations

Work with crossing guard coordinators to assess crossing guard locations to ensure proper placement at and around each school. Also evaluate crossing directions at each intersection as some locations are only allowed to cross one direction.

Appleton Public Montessori Action Plan

Education & Encouragement

1. Participate in the Frequent Walker program to provide students the opportunity to walk at school.
2. Create a bicycle curriculum program and utilize Plaumann Park to provide hands on learning.
3. Participate in Safe Routes to School educational campaigns to educate parents and community members about safe driving, walking, and biking at school and in the community.

Engineering

1. Please note the layout of Appleton Public Montessori will change with the reconstruction of Plamann Park in 2021/2022.
2. Install sidewalks on the roadway in front of Appleton Public Montessori School to provide students a safe way to walk to and from school.
3. Develop a safer pedestrian crossing from the parking lot to the school entrance.
4. Install pedestrian signage and a school zone speed limit sign in the front of the school to decrease vehicle speeds and improve awareness of pedestrians.
5. Work with the Outagamie County Parks Department to develop traffic calming measures to reduce traffic speeds.

Enforcement

1. Enforce school zone speeds in Plamann Park to make it safer for students walking and bicycling.
2. Coordinate with Outagamie County Sherriff's Department and the Safe Routes to School program to implement Project RADAR.

Evaluation

1. Evaluate current site plan for Plamann Park reconstruction.

**Current Event and Program
Participation**

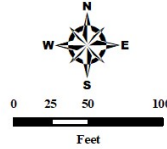


Appleton Public Montessori School

Bicycle & Walk Audit

Legend

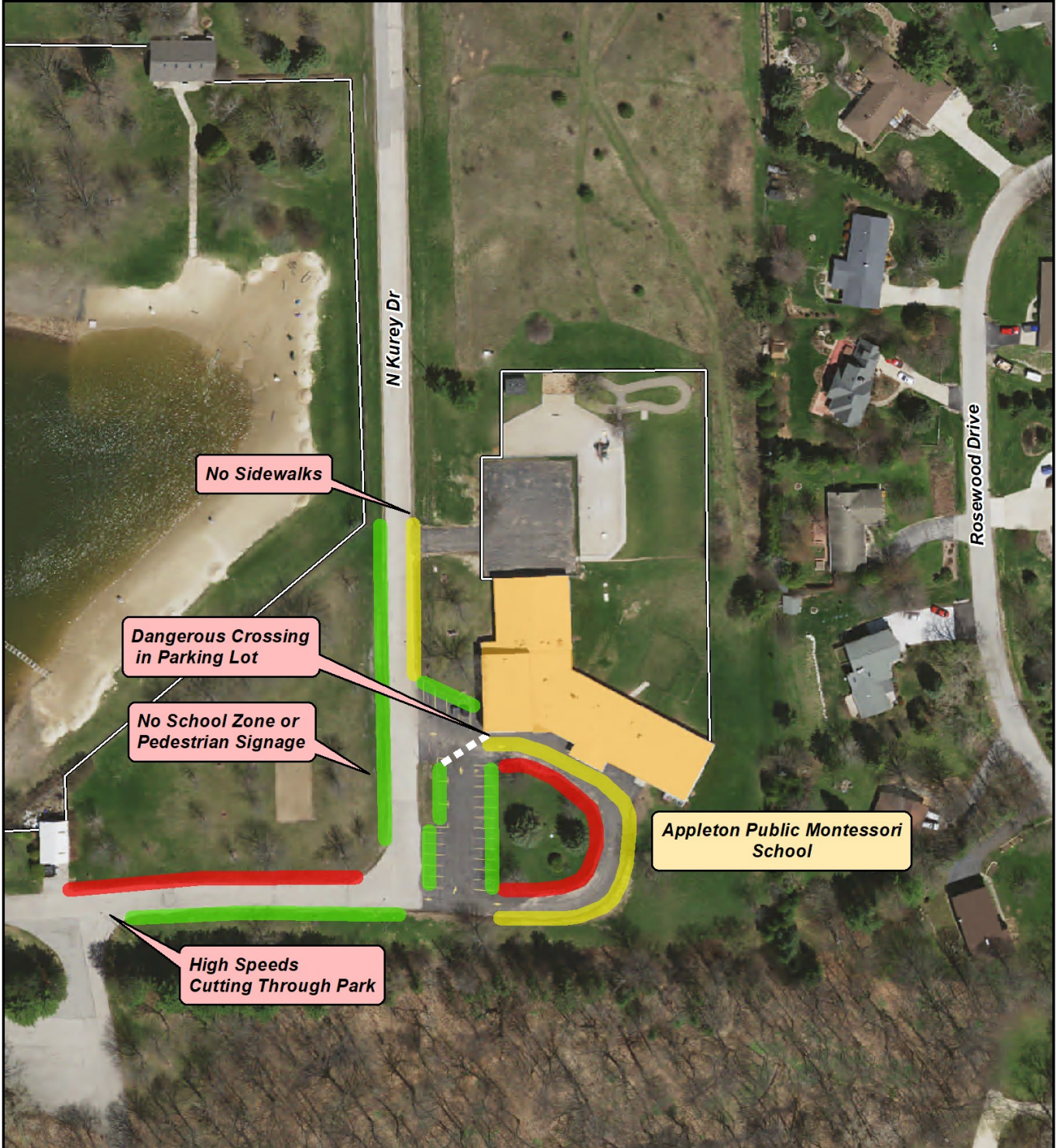
- | | | | |
|---|------------------|---|------------------|
|  | Crossing Guard |  | Loading Zone |
|  | Pedestrian Sign |  | Bus Loading Zone |
|  | School Zone Sign |  | General Parking |
|  | Bike Rack |  | Staff Parking |
| | |  | No Parking |



Source:
Base data provided by Outagamie County 2017.
SRTS data provided by ECWRPC 2019.

This data was created for use by the East Central Wisconsin Regional Planning Commission Geographic Information System. Any other use/application of this information is the responsibility of the user and such use/application is at their own risk. East Central Wisconsin Regional Planning Commission disclaims all liability regarding fitness of the information for any use other than for East Central Wisconsin Regional Planning Commission business.

PREPARED FEBRUARY 2020 BY:



Badger Elementary School Action Plan

Education & Encouragement

1. Educate parents about driving slow in the parking lot and stopping at the stop sign on the east side of the parking lot through parent pick-up and drop-off procedure maps.
2. Participate in the Walking School Bus and/or the Frequent Walker program to encourage students to walk to and or at school.
3. Participate in Project RADAR to educate students and community members about driving safe and slowing down in school zones.
4. Participate in Safe Routes to School educational campaigns to educate parents and community members about safe driving, walking, and biking at school and in the community.

Engineering

1. Work with the Town of Grand Chute staff to develop alternate traffic route options to reduce congestion on West Spencer Street.
2. Consider expanding and reconfiguring the parking lot if space is available to reduce congestion on West Spencer Street.
3. Extend sidewalks connecting to the school including but not limited to: West Spencer Street, Bluemound Drive, and 4th Street. Work with the Town of Grand Chute staff to update the Town's comprehensive plan and reference the bicycle and pedestrian plan.

Enforcement

1. Work with the Town of Grand Chute Police Department to monitor speeds on West Spencer Street and Bluemound Drive.

Evaluation

1. Evaluate the pick-up and drop-off procedures on a yearly basis to identify safety improvements for students walking and bicycling.

Equity

1. Badger Elementary School ranked in the high priority category of the Equity Analysis. Please reference the equity analysis on pages 8 and 10 to learn more information about this analysis and providing resources to this school to make walking and biking safer for students.

Current Event and Program Participation

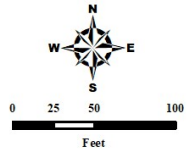


Badger Elementary School

Bicycle & Walk Audit

Legend

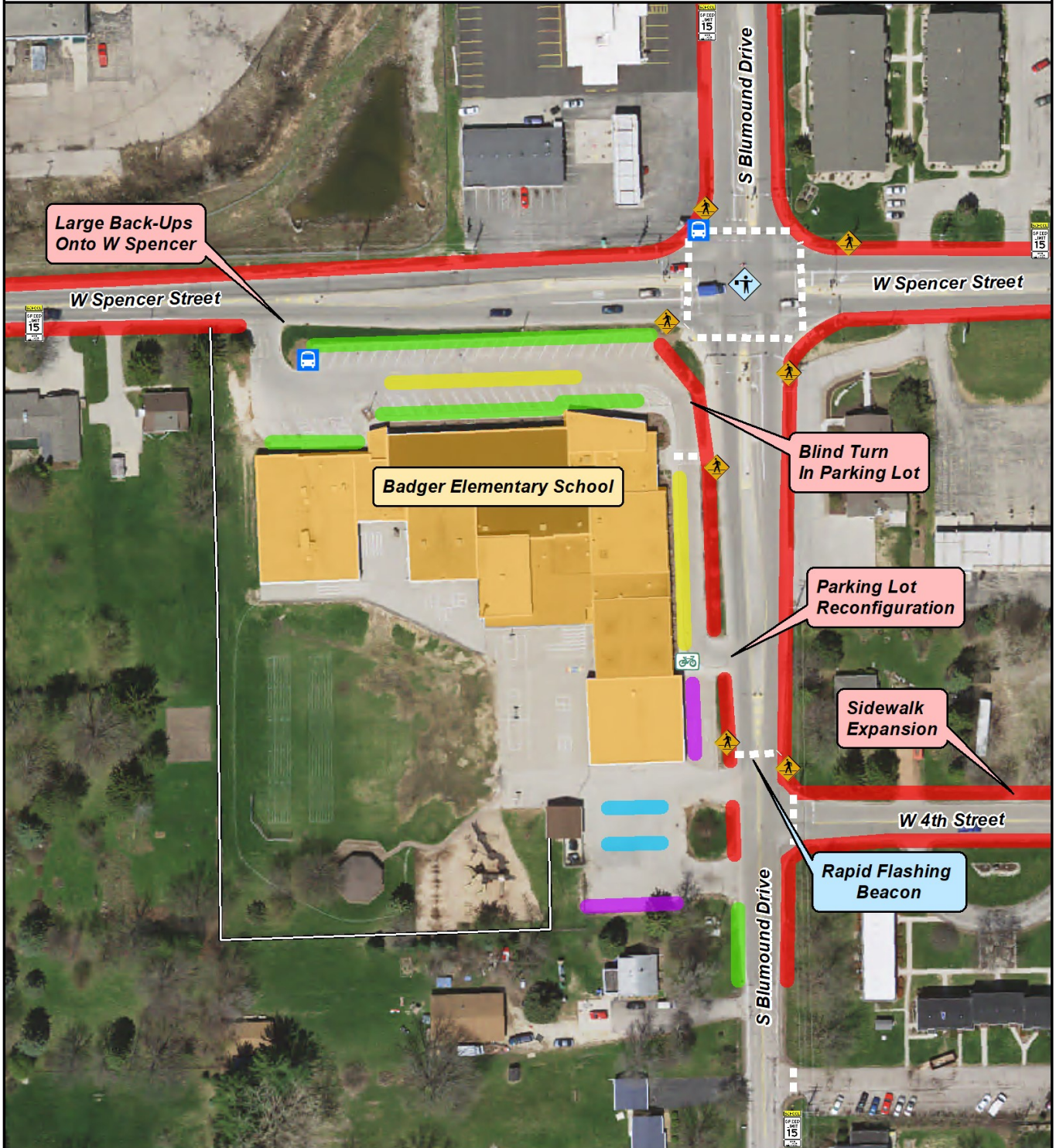
-  Transit Stop
-  Crossing Guard
-  Pedestrian Sign
-  School Zone Sign
-  Bike Rack
-  Loading Zone
-  Bus Loading Zone
-  General Parking
-  Staff Parking
-  No Parking



Source:
 Base data provided by Outagamie County 2017.
 SRTS data provided by ECWRPC 2019.

This data was created for use by the East Central Wisconsin Regional Planning Commission Geographic Information System. Any other use or application of this information is the responsibility of the user and such use/application is at their own risk. East Central Wisconsin Regional Planning Commission disclaims all liability regarding fitness of the information for any use other than for East Central Wisconsin Regional Planning Commission business.

PREPARED FEBRUARY 2020 BY:



Berry Elementary School Action Plan

Education & Encouragement

1. Participate in the Walking School Bus program to encourage students to walk to school and to reduce congestion during pick-up and drop-off times.
2. Participate in Project RADAR to increase knowledge about driving safe and slowing down in school zones.
3. Implement walking and bicycling curriculum to educate students on safe behaviors while they are walking and biking to and from school.
4. Encourage parents to travel west down East Janet Lane instead of east to reduce left turn difficulties onto South Telulah Avenue.
5. Participate in Safe Routes to School educational campaigns to educate parents and community members about safe driving, walking, and biking at school and in the community.

Engineering

1. Paint ladder style crosswalks on East Midway Road and South Telulah Avenue and Orchard Blossom Drive and South Telulah Avenue to improve crosswalk visibility.
2. Remove parking on the west side of South Telulah Avenue and the south side Orchard Blossom Drive near the intersection of Orchard Blossom Drive and South Telulah Avenue to reduce visibility issues.
3. Work with the City of Appleton to add traffic control to Hulke Drive at the intersection of Hulke Drive and South Berryfield Lane.
4. Connect the sidewalk on the northwest side of the front of the school to East Janet Lane to encourage more parents to drop off their students on East Janet Lane.
5. Consider installing sidewalks in the subdivisions south of Berry Elementary when urbanizing roadways or reconstructing roadways.

Enforcement

1. Continue the safety patrol program to assist students in safely crossing the street.
2. Enforce the school zone speed limit on Midway Road to make it safe for students walking and bicycling.

Evaluation

1. Continue to evaluate the intersection of Orchard Blossom Drive and South Telulah Avenue for safety of students walking and biking due to high traffic volumes.

Equity

1. Berry Elementary School ranked in the low priority category of the Equity Analysis. Please reference the equity analysis on page 8 to learn more information.

Current Event and Program Participation



Berry Elementary School

Bicycle & Walk Audit

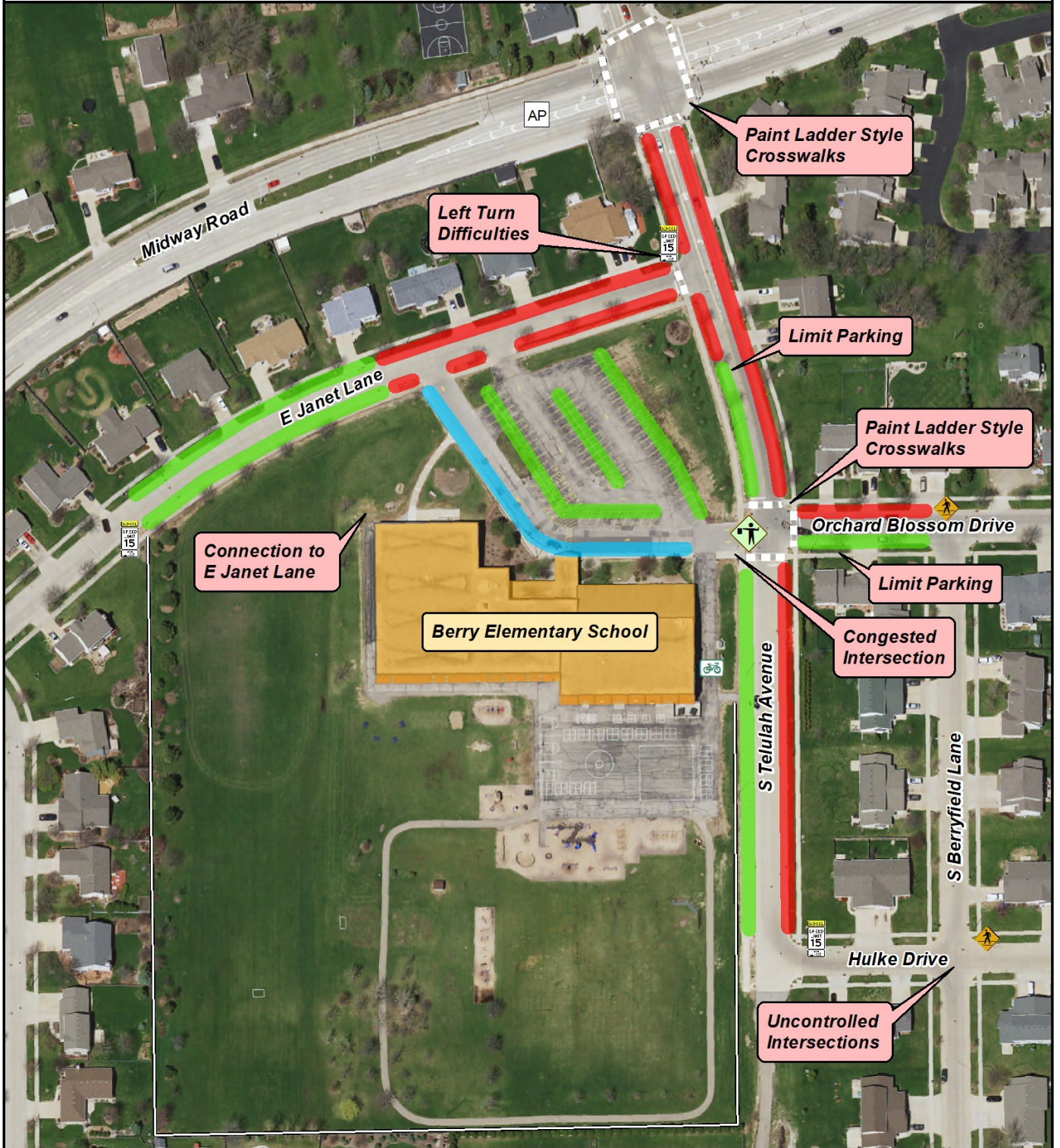
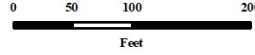
Legend

-  Safety Patrol
-  Crossing Guard
-  Pedestrian Sign
-  School Zone Sign
-  Bike Rack
-  Loading Zone
-  Bus Loading Zone
-  General Parking
-  Staff Parking
-  No Parking

Source:
Base data provided by Outagamie County 2017.
SRTS data provided by ECWRPC 2019.

This data was created for use by the East Central Wisconsin Regional Planning Commission Geographic Information Systems. Any other use application of this information is the responsibility of the user and such use application is at their own risk. East Central Wisconsin Regional Planning Commission disclaims all liability regarding fitness of the information for any use other than for East Central Wisconsin Regional Planning Commission business.

PREPARED MARCH 2020 BY:



Classical School Action Plan

Education & Encouragement

1. Participate in Walk to School Day, Winter Walk to School Month, and Bike to School Day events.
2. Participate in the Walking School Bus and or Frequent Walker programs to encourage students to walk to or at school.
3. Participate in Safe Routes to School educational campaigns to educate parents and community members about safe driving, walking, and biking at school and in the community.

Engineering

1. Paint ladder style crosswalks at the intersection of East Capitol Drive and North Durkee Street to increase visibility of students walking in the crosswalk. Work with the City of Appleton to review this intersection for traffic control.
2. Designate as no parking and paint the curb yellow by the crosswalk of East Capitol Drive and North Mariah Lane to improve visibility of students walking in the crosswalk.

Enforcement

1. Enforce no parking at the intersection of North Mariah Lane and East Capitol Drive to improve visibility of students crossing in the crosswalk.

Evaluation










1. Collaborate with the City of Appleton's Parks and Recreation Department to evaluate the land use for the three school campus and the park located between them.
2. Please see pages 68-70 to review the network analysis for Classical, Einstein, and Ferber Schools.

**Current Event and Program
Participation**



Classical School Bicycle & Walk Audit

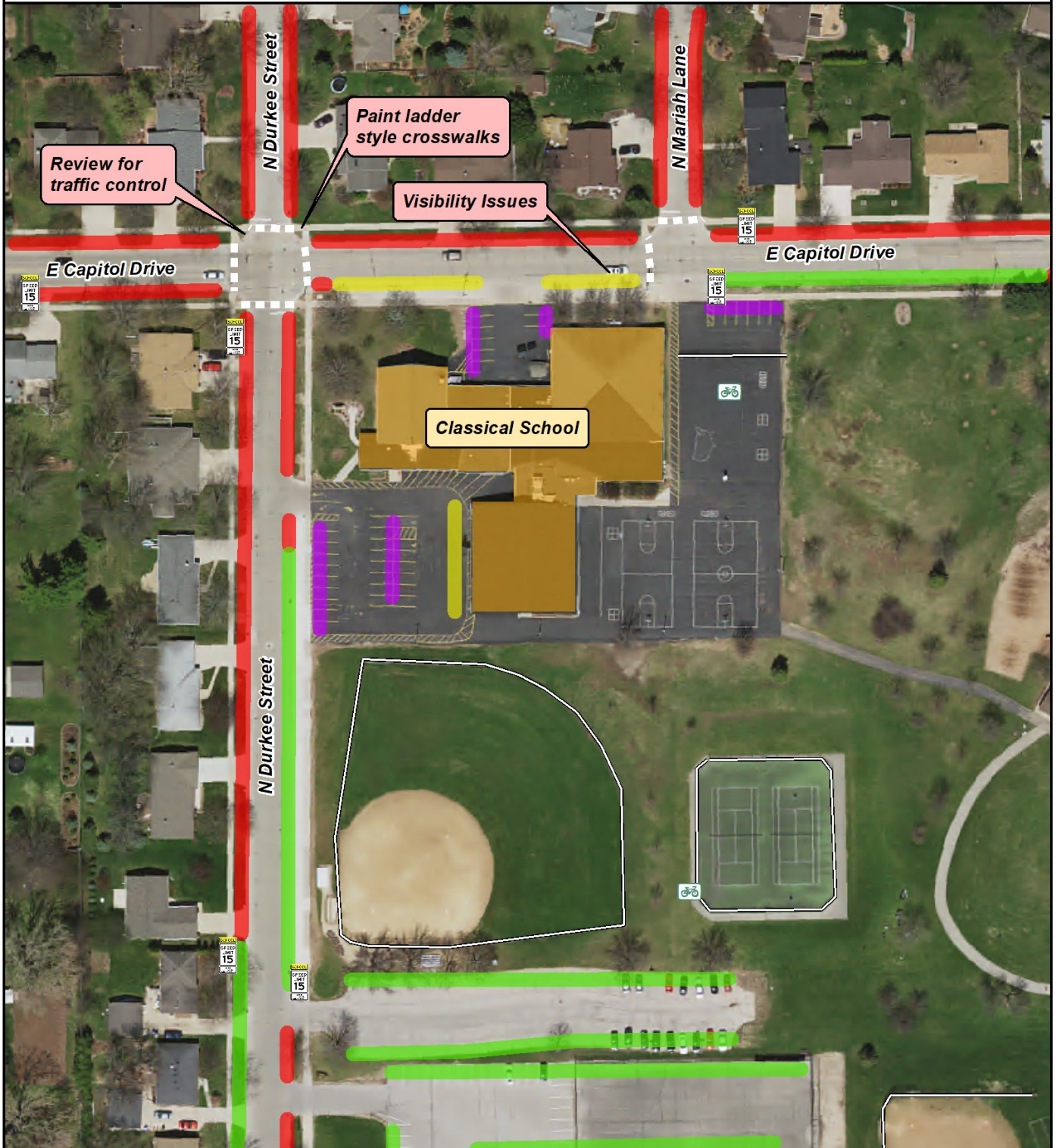
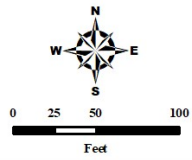
Legend

- | | | | |
|---|------------------|---|------------------|
|  | Crossing Guard |  | Loading Zone |
|  | Pedestrian Sign |  | Bus Loading Zone |
|  | School Zone Sign |  | General Parking |
|  | Bike Rack |  | Staff Parking |
| | |  | No Parking |

Source:
Base data provided by Outagamie County 2018.
SRTS data provided by ECWRPC 2019.

This data was created for use by the East Central Wisconsin Regional Planning Commission Geographic Information System. Any other use application of this information is the responsibility of the user and such use application is at their own risk. East Central Wisconsin Regional Planning Commission disclaims all liability regarding fitness of the information for any use other than for East Central Wisconsin Regional Planning Commission business.

PREPARED MARCH 2020 BY:



Columbus Elementary School Action Plan

Education & Encouragement

1. Participate in Walk to School Day, Winter Walk to School Month, and Bike to School Day events.
2. Participate in the Walking School Bus and or Frequent Walker program to encourage students to walk to or at school.
3. Participate in Safe Routes to School educational campaigns to educate parents and community members about safe driving, walking, and biking at school and in the community.

Engineering

1. Remove parking on the east side of North Oneida Street to improve visibility of students crossing at the intersection of West Commercial Street and North Oneida Street.
2. Remove parking on the south side of West Winnebago Street to widen the travel lane making it more accessible for cars, busses, and emergency vehicles to travel.
3. Paint ladder style crosswalks and make the curb cuts ADA compliant at the intersection of West Winnebago Street and North Oneida Street.
4. Designate the south side West Commercial Street as a bus loading zone for all of the school busses to create one consistent bus loading zone.

Evaluation

1. Continue to monitor the safety of student crossings at the intersection of West Winnebago Street and North Oneida Street due to high traffic volumes.

Equity

1. Columbus Elementary School ranked in the high priority category of the Equity Analysis. Please reference the equity analysis on pages 8 and 9 to learn more information about providing resources to this school to make walking and biking safer for students.

**Current Event and Program
Participation**



Columbus Elementary School

Bicycle & Walk Audit

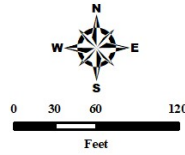
Legend

-  Safety Patrol
-  Crossing Guard
-  Pedestrian Sign
-  School Zone Sign
-  Bike Rack
-  Transit Stop
-  Loading Zone
-  Bus Loading Zone
-  General Parking
-  Staff Parking
-  No Parking

Source:
Base data provided by Outagamie County 2017.
SRTS data provided by ECWRPC 2019.

This data was created for use by the East Central Wisconsin Regional Planning Commission Geographic Information System. Any other use application of this information is the responsibility of the user and such use application is at their own risk. East Central Wisconsin Regional Planning Commission disclaims all liability regarding fitness of the information for any use other than for East Central Wisconsin Regional Planning Commission business.

PREPARED MARCH 2020 BY:



Edison Elementary School Action Plan

Education & Encouragement

1. Participate in Walk to School Day, Winter Walk to School Month, and Bike to School Day events.
2. Participate in the Frequent Walker and or the Walking School Bus program to encourage students to walk to or at school.
3. Encourage students to walk along the recommended Edison light bulb painted routes.
4. Participate in Safe Routes to School educational campaigns to educate parents and community members about safe driving, walking, and biking at school and in the community.

Engineering

1. Make the turnabout circle on East Eldorado Street a no parking, stopping, or standing zone to eliminate traffic congestion and cars blocking neighborhood driveways. This traffic also causes visibility issues at the intersection of North Rankin Street. and East Eldorado Street.

Enforcement

1. Enforce no parking near the intersection of North Meade Street and East Eldorado Street to improve crosswalk visibility.

Equity

1. Edison Elementary School ranked in the high priority category of the Equity Analysis. Please reference the equity analysis on pages 8 and 10 to learn more information about providing resources to this school to make walking and biking safer for students.

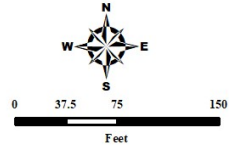
Current Event and Program Participation



Edison Elementary School

Bicycle & Walk Audit

- Legend**
-  Transit Stop
 -  Crossing Guard
 -  Pedestrian Sign
 -  School Zone Sign
 -  Bike Rack
 -  Loading Zone
 -  Bus Loading Zone
 -  General Parking
 -  Staff Parking
 -  No Parking



Source:
Base data provided by Outagamie County 2017.
SRTS data provided by ECRPC 2019.

This data was created for use by the East Central Wisconsin Regional Planning Commission Geographic Information Systems. Any other use/application of this information is the responsibility of the user and such use/application is at their own risk. East Central Wisconsin Regional Planning Commission disclaims all liability regarding fitness of the information for any use other than for East Central Wisconsin Regional Planning Commission business.

PREPARED MARCH 2020 BY:



TD P:\138x-Regional SRTS\GIS_Mapping\Bicycle Walk Audits\2019\Appleton\Edison\Edison_Elementary.mxd

Einstein Middle School Action Plan

Education & Encouragement

1. Participate in Walk to School Day, Winter Walk to School Month, and Bike to School Day.
2. Implement bicycling into the physical education curriculum to educate students on bicycle safety skill for when they ride to, from, or at school.
3. Participate in Safe Routes to School educational campaigns to educate parents and community members about safe driving, walking, and biking at school and in the community.

Engineering

1. Redesign the parking lot to eliminate conflict points at the parking lot entrances and to improve traffic flow. Parents drive over the grass section between the two parking lots.
2. Designate the front drop off area as a bus only or parent only drop off zone to eliminate traffic congestion and conflict points.
3. Work with the City of Appleton to evaluate the intersection of North Durkee Street and East Florida Street for traffic calming measures due to congestion and crossing difficulties. There are left turn difficulties at this intersection due to high traffic volumes.
4. Work with the City of Appleton to extend the sidewalk on the north and south sides of East Florida Avenue southwest of the school campus.

Evaluation

1. Please see pages 68-70 to review the network analysis for Classical, Einstein, and Ferber Schools.

Equity

1. Einstein Middle School ranked in the low priority category of the Equity Analysis. Please reference the equity analysis on page 8 to learn more information.

**Current Event and Program
Participation**

Not currently Participating

Einstein Middle School

Bicycle & Walk Audit

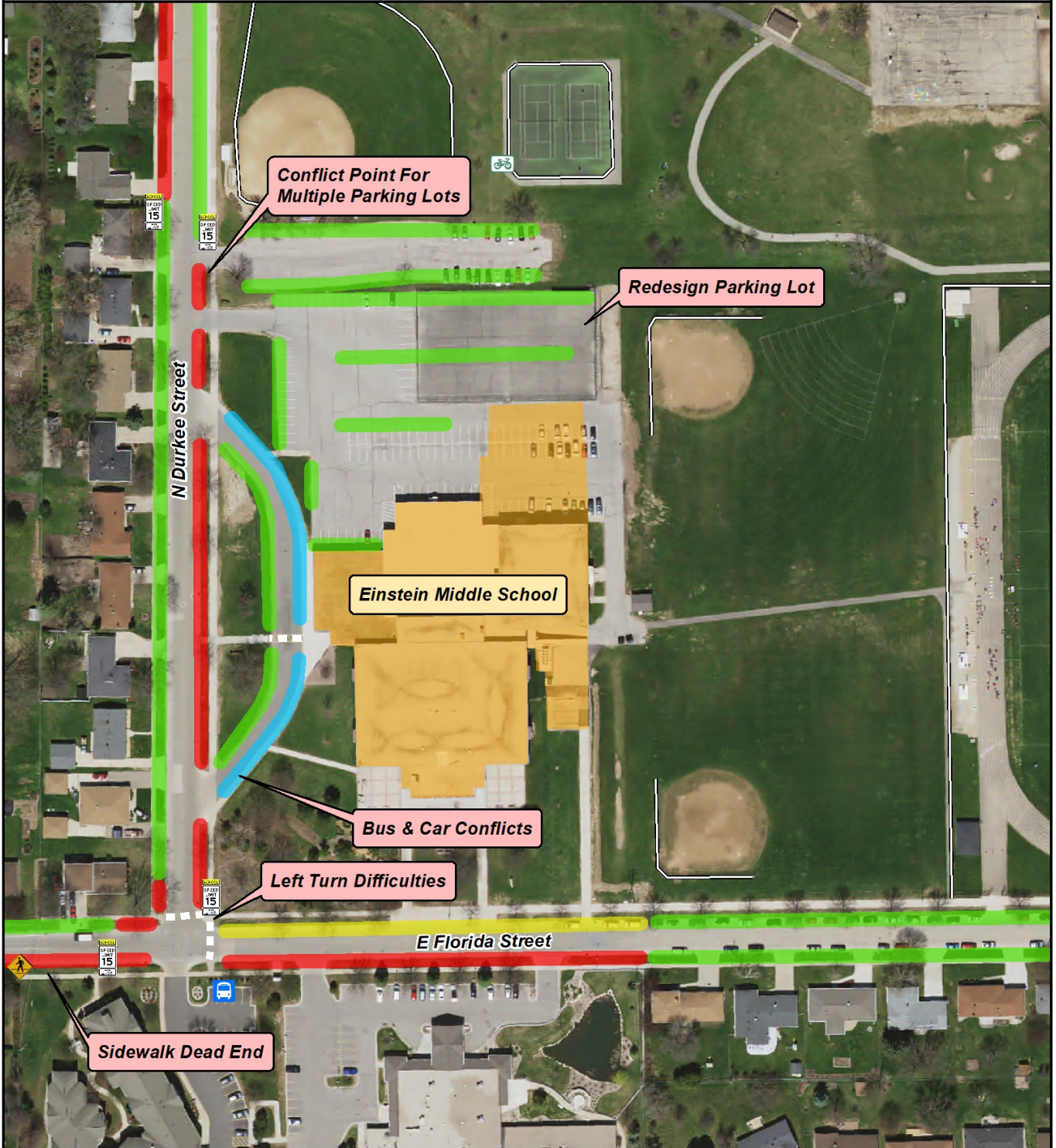
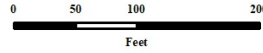
Legend

-  Transit Stop
-  Crossing Guard
-  Pedestrian Sign
-  School Zone Sign
-  Bike Rack
-  Loading Zone
-  Bus Loading Zone
-  General Parking
-  Staff Parking
-  No Parking

Source:
Base data provided by Outagamie County 2017.
SRTS data provided by ECRPC 2019.

This data was created for use by the East Central Wisconsin Regional Planning Commission Geographic Information System. Any other use/application of this information is the responsibility of the user and such use/application is at their own risk. East Central Wisconsin Regional Planning Commission disclaims all liability regarding fitness of the information for any use other than for East Central Wisconsin Regional Planning Commission business.

PREPARED MARCH 2020 BY:



Ferber Elementary School Action Plan

Education & Encouragement

1. Educate parents on proper pick-up and drop-off procedures using a parent map and letter.
2. Create awareness about students crossing in crosswalks, especially when drivers are turning at the intersection of North Meade Street and East Capitol Drive.
3. Participate in Safe Routes to School educational campaigns to educate parents and community members about safe driving, walking, and biking at school and in the community.

Engineering

1. Paint ladder style crosswalks at the intersection of East Capitol Drive and Northbreeze Drive to improve visibility of students walking in the crosswalks.

Enforcement

1. Enforce no parking in front of residential driveways and in the loading zone on East Capitol Drive to prevent congestion during pick-up and drop-off times.
2. Enforce no parking in bus loading zone in the front of the school.

Evaluation

1. Please see pages 68-70 to review the network analysis for Classical, Einstein, and Ferber Schools.

Equity




1. Ferber Elementary School ranked in the low priority category of the Equity Analysis. Please reference the equity analysis on page 8 to learn more information.

**Current Event and Program
Participation**








Ferber Elementary School

Bicycle & Walk Audit

-  Transit Stop
-  Crossing Guard
-  Pedestrian Sign
-  School Zone Sign
-  Bike Rack

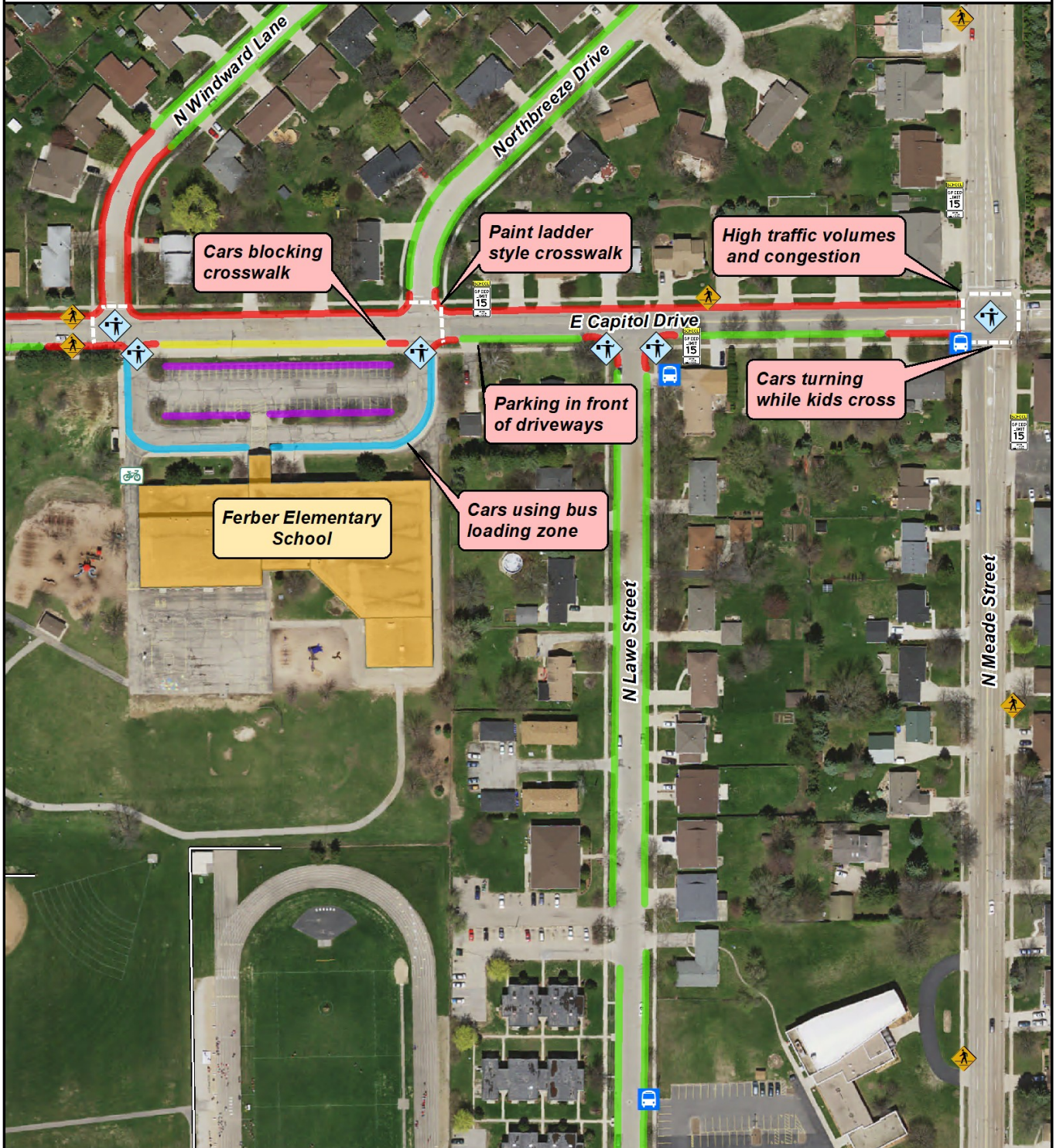
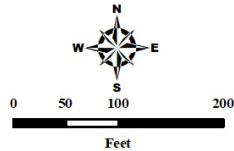
Legend

-  Loading Zone
-  Bus Loading Zone
-  General Parking
-  Staff Parking
-  No Parking

Source:
Base data provided by Outagamie County 2017.
SRTS data provided by ECWRPC 2019.

This data was created for use by the East Central Wisconsin Regional Planning Commission Geographic Information Systems. Any other use or application of this information is the responsibility of the user and such use application is at their own risk. East Central Wisconsin Regional Planning Commission disclaims all liability regarding fitness of the information for any use other than for East Central Wisconsin Regional Planning Commission business.

PREPARED FEBRUARY 2020 BY:



Foster Elementary School Action Plan

Education & Encouragement

1. Encourage parents to drop-off and pick-up at a remote pick-up and drop-off location to prevent traffic congestion around the school, especially on West Foster Street.
2. Encourage parents to not turn around in residential driveways on West Foster Street.
3. Participate in Safe Routes to School educational campaigns to educate parents and community members about safe driving, walking, and biking at school and in the community.

Engineering

1. Replace sections of sidewalk on the north and south side of Foster Street due to cracking and rising of sidewalk.
2. Designate a small bus loading zone to the **west** of the crosswalk on West Foster Street to prevent parents from parking in that area making it unsafe for students to access the bus safely.
3. Add curbing to the south side of West Foster Street in front of the school when the next reconstruction project occurs. Designate this area as a no parking zone.
4. Provide a sidewalk connection off of Foster Court to the school for students walking and biking to school.
5. Repaint the pedestrian crossing in the parking lot to improve visibility of students walking into school.

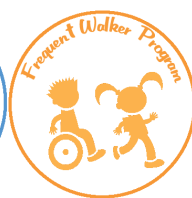
Enforcement

1. Enforce no parking on the north side of Foster Street due to cars parking in the no parking zone and on south side of West Foster Street near the crosswalk to improve visibility of students walking and biking.

Equity

1. Foster Elementary School ranked in the medium priority category of the Equity Analysis. Please reference the equity analysis on page 8 to learn more information.

Current Event and Program Participation

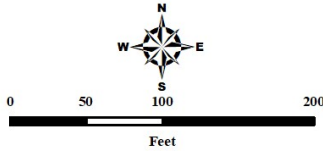


Foster Elementary School

Bicycle & Walk Audit

Legend

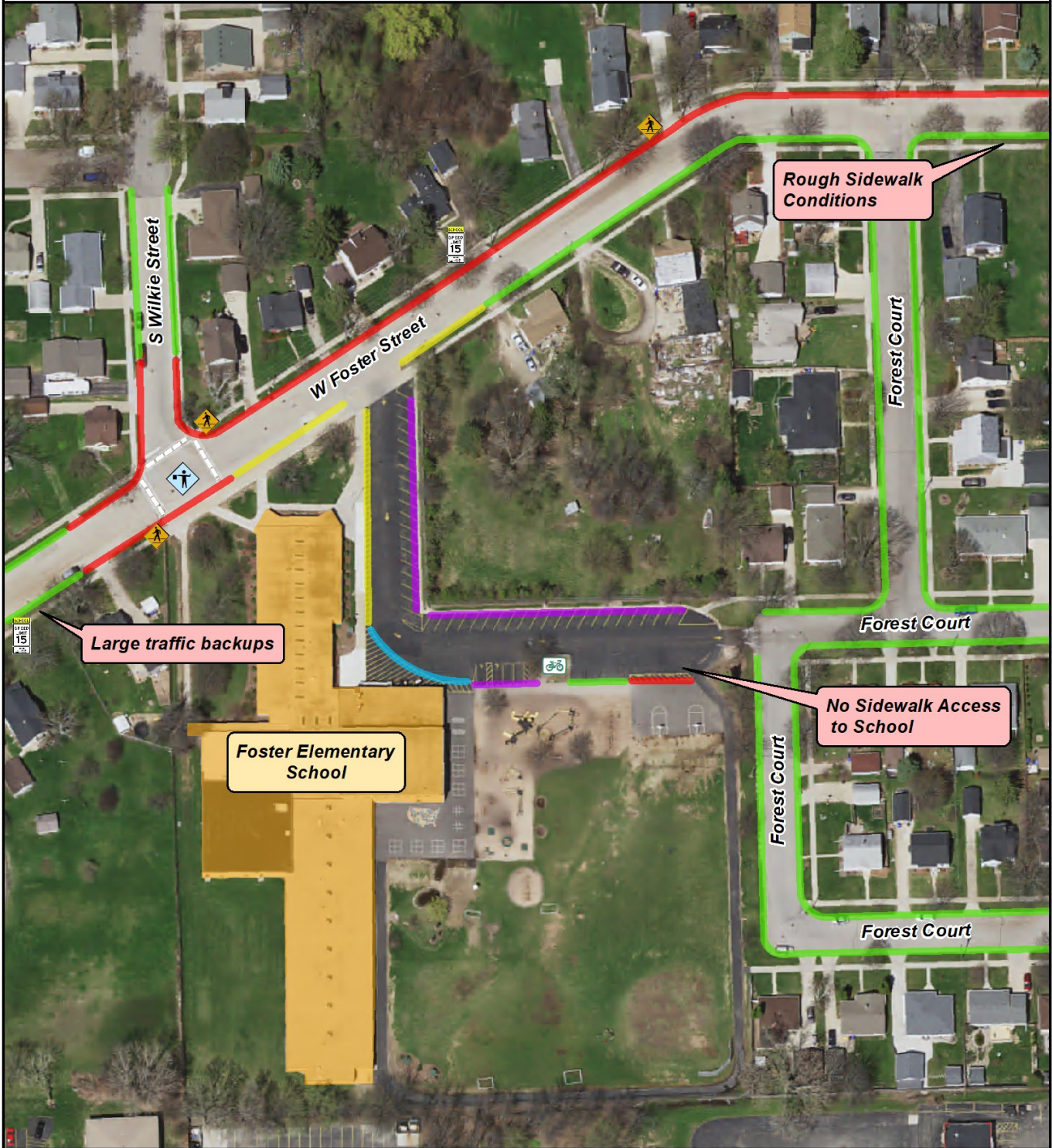
-  Crossing Guard
-  Pedestrian Sign
-  School Zone Sign
-  Bike Rack
-  Loading Zone
-  Bus Loading Zone
-  General Parking
-  Staff Parking
-  No Parking



Source:
Base data provided by Outagamie County 2017.
SRTS data provided by ECWRPC 2019.

This data was created for use by the East Central Wisconsin Regional Planning Commission Geographic Information System. Any other use/application of this information is the responsibility of the user and such use/application is at their own risk. East Central Wisconsin Regional Planning Commission disclaims all liability regarding fitness of the information for any use other than for East Central Wisconsin Regional Planning Commission business.

PREPARED JANUARY 2020 BY:



Franklin Elementary School Action Plan

Education & Encouragement

1. Educate parents on proper school zone behavior with a pick-up and drop-off procedure map and letter. Provide education on parking and no parking areas on the west side of North Drew Street.
2. Start a Walking School Bus program from Erb Park to Franklin Elementary School to reduce traffic congestion on East Lindbergh Street and East Marquette Street.
3. Run Project RADAR on East Lindbergh Street to educate students and drivers about slowing down in school zones.
4. Participate in Safe Routes to School educational campaigns to educate parents and community members about safe driving, walking, and biking at school and in the community.

Engineering

1. Work with the city of Appleton to add traffic control at the intersection of North Jarchow Street and East Marquette Street.

Enforcement

1. Enforce no turning around in driveways, parking in designated no parking areas/ loading zones, and slowing down in school zones.

Equity

1. Franklin Elementary School ranked in the low priority category of the Equity Analysis. Please reference the equity analysis on page 8 to learn more information.

Current Event and Program Participation

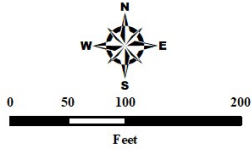


Franklin Elementary School

Bicycle & Walk Audit

Legend

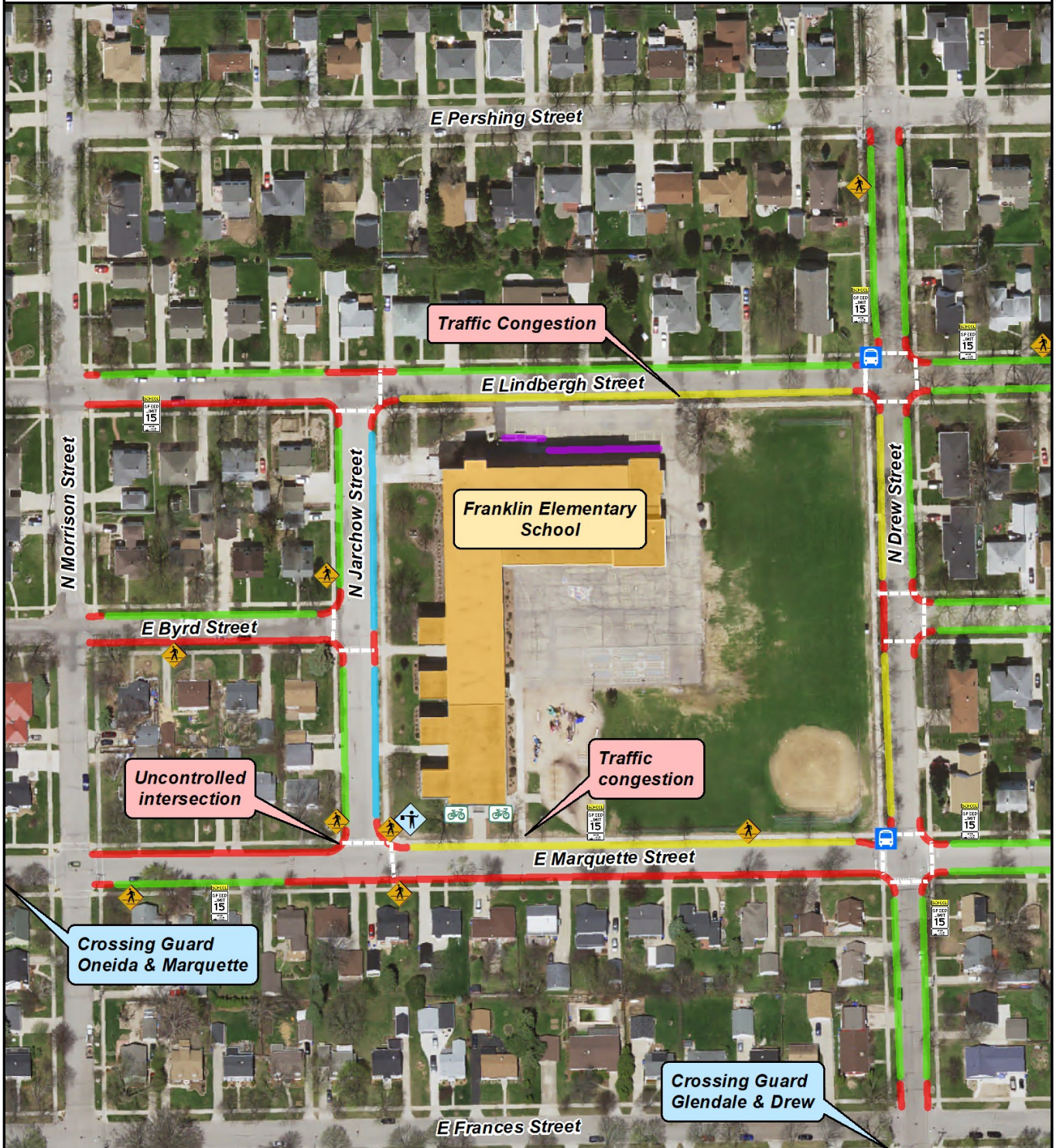
-  Crossing Guard
-  Pedestrian Sign
-  School Zone Sign
-  Bike Rack
-  Transit Stop
-  Loading Zone
-  Bus Loading Zone
-  General Parking
-  Staff Parking
-  No Parking



Source:
Base data provided by Outagamie County 2017.
SRTS data provided by ECWRPC 2019.

This data was created for use by the East Central Wisconsin Regional Planning Commission Geographic Information System. Any other use/application of this information is the responsibility of the user and such use/application is at their own risk. East Central Wisconsin Regional Planning Commission disclaims all liability regarding fitness of the information for any use other than for East Central Wisconsin Regional Planning Commission business.

PREPARED FEBRUARY 2020 BY:



Highlands Elementary School Action Plan

Education & Encouragement

1. Start a Walking School Bus program starting at Summit Park to reduce congestion at and around the school.
2. Educate parents with a pick-up and drop-off procedure map and letter to decrease parking in no parking areas or loading zones.
3. Participate in Safe Routes to School educational campaigns to educate parents and community members about safe driving, walking, and biking at school and in the community.

Engineering

1. Work with the City of Appleton to add traffic control to the intersection of West Marquette Street and North Elinor Street.
2. Work with the City of Appleton to include a sidewalk connection in Kiwanis Park and on the east side of North Nicholas Street to provide complete access to the school.

Enforcement

1. Enforce the designated no parking zones on North Elinor Street especially by the crosswalk to improve visibility of students crossing.

Equity

1. Highlands Elementary School ranked in the medium priority category of the Equity Analysis. Please reference the equity analysis on page 8 to learn more information.

Current Event and Program Participation



Highlands Elementary School

Bicycle & Walk Audit

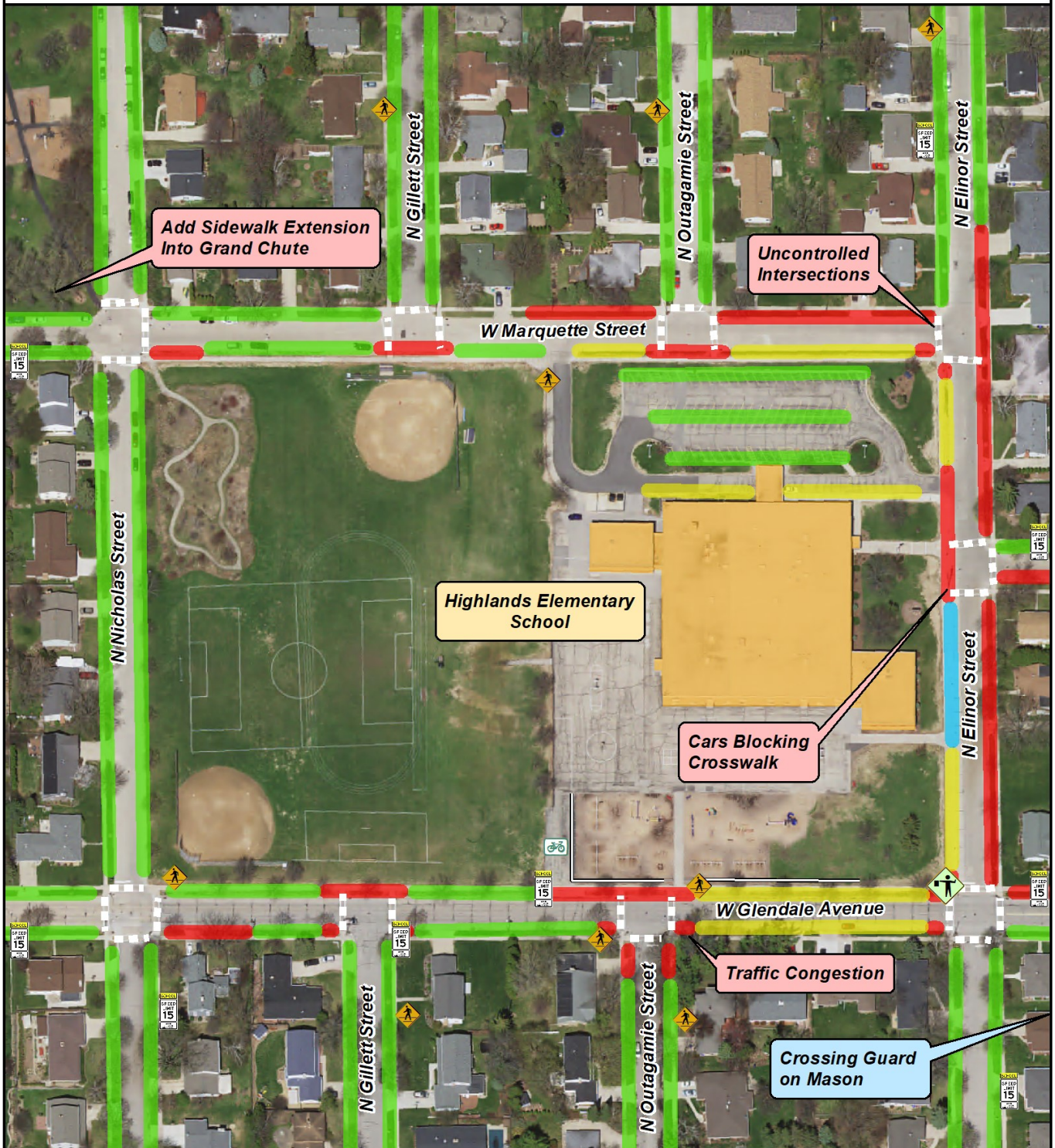
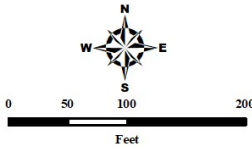
Legend

-  Safety Patrol
-  Crossing Guard
-  Pedestrian Sign
-  School Zone Sign
-  Bike Rack
-  Loading Zone
-  Bus Loading Zone
-  General Parking
-  Staff Parking
-  No Parking

Source:
Base data provided by Outagamie County 2017.
SRTS data provided by ECWRPC 2019.

This data was created for use by the East Central Wisconsin Regional Planning Commission Geographic Information Systems. Any other use or application of this information is the responsibility of the user and such use application is at their own risk. East Central Wisconsin Regional Planning Commission disclaims all liability regarding fitness of the information for any use other than for East Central Wisconsin Regional Planning Commission business.

PREPARED FEBRUARY 2020 BY:



Horizons Elementary School Action Plan

Education & Encouragement

1. Participate in Safe Routes to School educational campaigns to educate parents and community members about safe driving, walking, and biking at school and in the community.

Engineering

1. Paint ladder style crosswalks at the intersection of South Horizon Drive and Welcome Circle/ Solar Circle to increase visibility of students walking in the crosswalk.

Enforcement

1. Enforce no parent pick-up and drop-off in the bus loading zone.

Equity

1. Horizons Elementary School ranked in the high priority category of the Equity Analysis. Please reference the equity analysis on pages 8 &9 to learn more information about providing resources to this school to make walking and biking safer for students.

Current Event and Program Participation



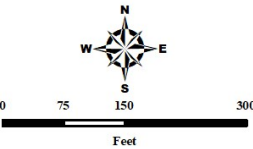
Horizons Elementary School

Bicycle & Walk Audit

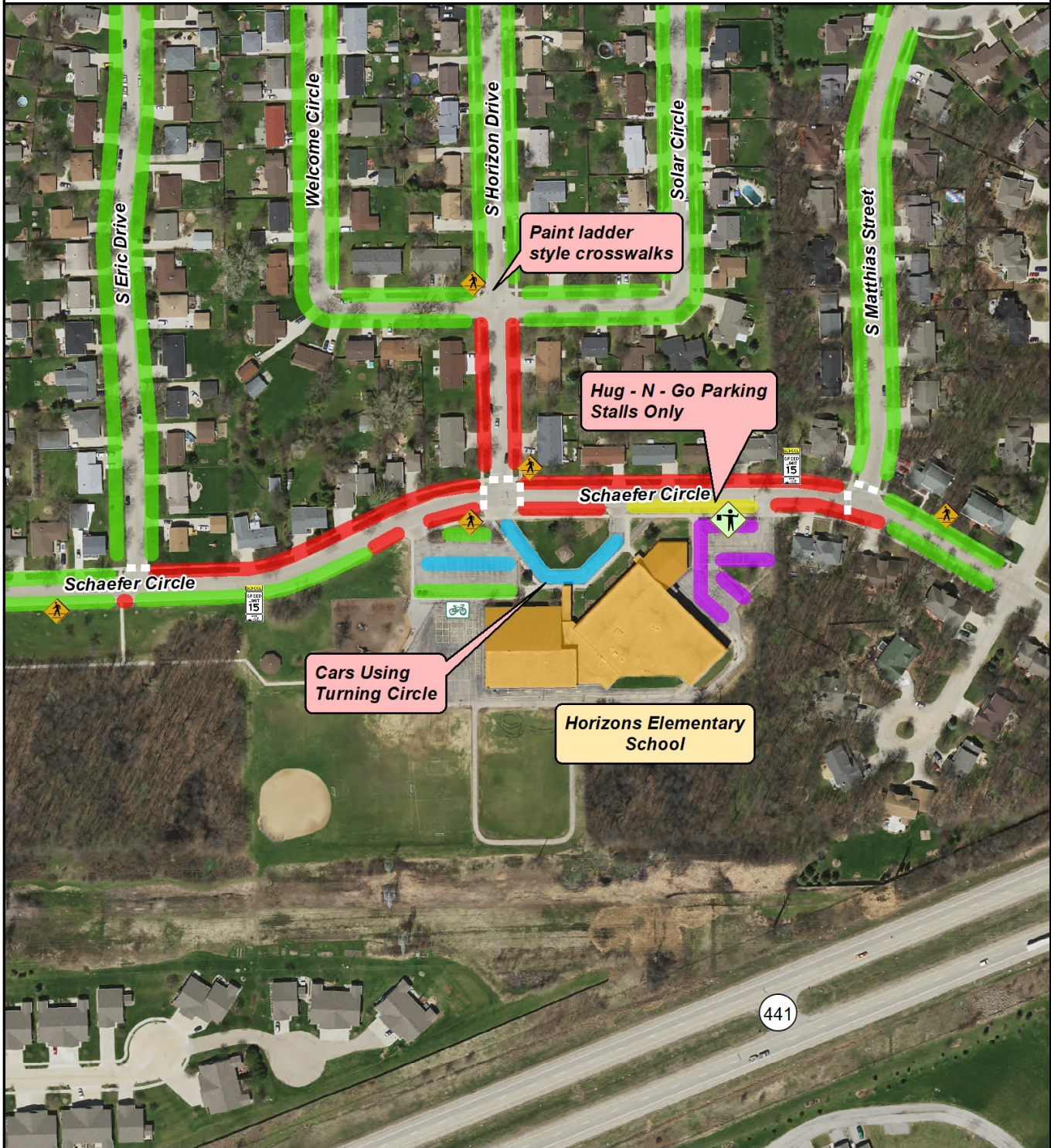
- Legend**
-  Safety Patrol
 -  Crossing Guard
 -  Pedestrian Sign
 -  School Zone Sign
 -  Bike Rack
 -  Loading Zone
 -  Bus Loading Zone
 -  General Parking
 -  Staff Parking
 -  No Parking

Source:
Base data provided by Outagamie County 2017.
SRTS data provided by ECWRPC 2019.

This data was created for use by the East Central Wisconsin Regional Planning Commission Geographic Information System. Any other use or application of this information is the responsibility of the user and such use or application is at their own risk. East Central Wisconsin Regional Planning Commission disclaims all liability regarding fitness of the information for any use other than for East Central Wisconsin Regional Planning Commission business.



PREPARED FEBRUARY 2020 BY:
East Central Wisconsin Regional Planning Commission
ECWRPC



TD P:\138x-Regional SRTS\GIS_Mapping\Bicycle Walk Audits\2019\Appleton\Horizons\Horizons_Elementary.mxd

Houdini Elementary School Action Plan

Education & Encouragement

1. Participate in Walk to School Day, Winter Walk to School Month, and Bike to School Day to encourage students to walk and bicycle to school.
2. Participate in the Frequent Walker program to encourage students to walk at school.
3. Participate in Safe Routes to School educational campaigns to educate parents and community members about safe driving, walking, and biking at school and in the community.

Engineering

1. Work with the City of Appleton to add traffic control at the intersection of North Oakdale Lane and West Spring Hollow Drive.
2. Work with the City of Appleton to evaluate the timing of the green turn arrow and pedestrian crossing signal at Capitol Drive and Lynndale Drive due to cars turning left and pedestrians walking.
3. Extend sidewalk on the north side of West Spring Hollow Drive to create safer walking options for students walking in the Village in the Meadows neighborhood.
4. Replace faded pedestrian signs on West Capitol Drive.

Enforcement

1. Work with the police department to enforce the school zone speed limit on North Lynndale Drive.
2. Enforce no parking in the loading zone on the south side of West Capitol Drive.
3. Enforce no parking on West Spring Hollow Drive in the designated no parking zone due to car congestion. The car congestion on West Spring Hollow Drive and the lack of sidewalks creates an unsafe walking environment. Educate parents to continue pulling forward on West Hollow Drive.

Equity

1. Houdini Elementary School ranked in the low priority category of the Equity Analysis. Please reference the equity analysis on page 8 to learn more information.

Current Event and Program Participation

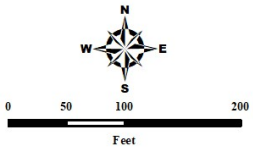


Houdini Elementary School

Bicycle & Walk Audit

Legend

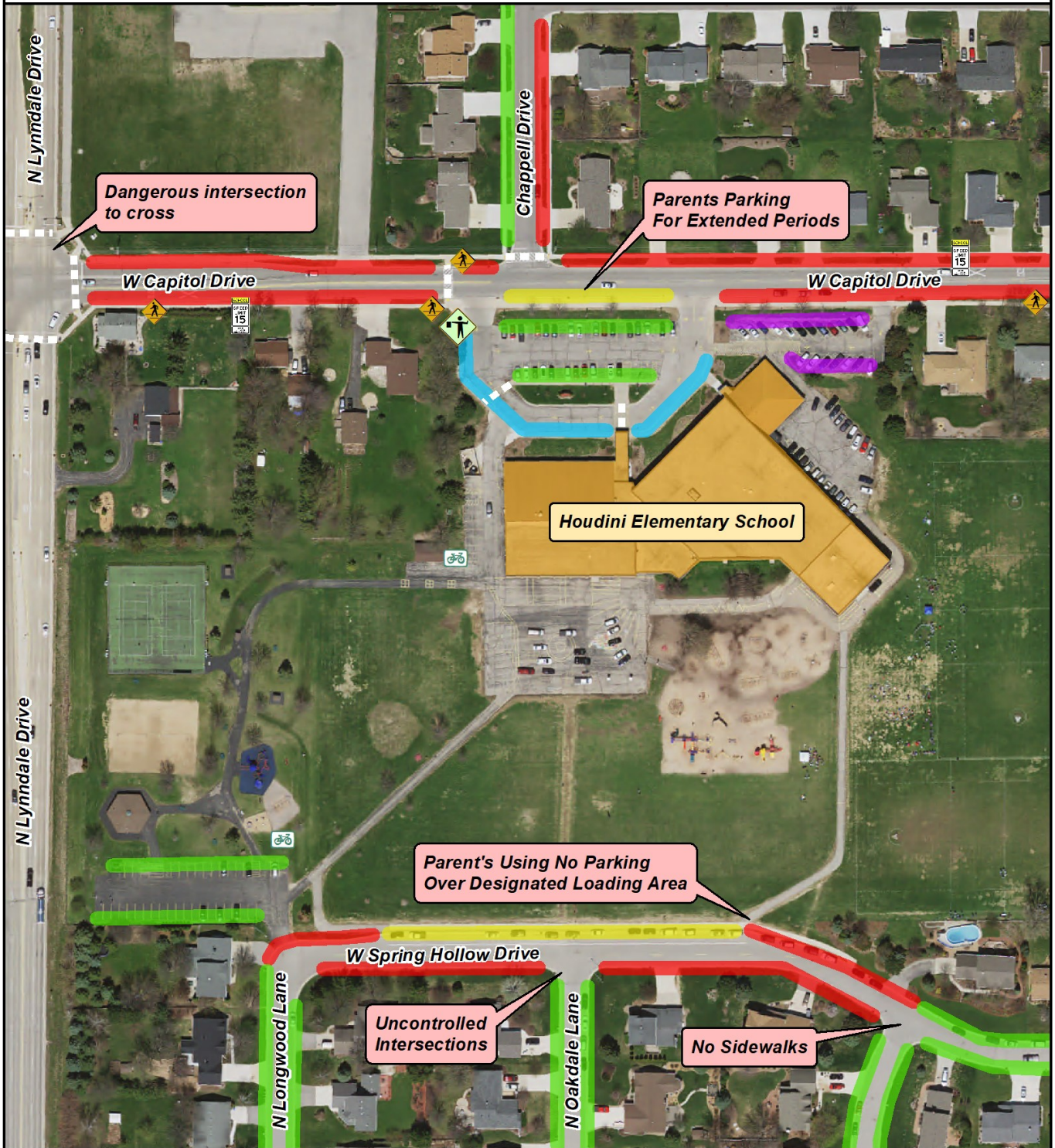
-  Crossing Guard
-  Pedestrian Sign
-  School Zone Sign
-  Bike Rack
-  Loading Zone
-  Bus Loading Zone
-  General Parking
-  Staff Parking
-  No Parking



Source:
Base data provided by Outagamie County 2017.
SRTS data provided by ECWRPC 2019.

This data was created for use by the East Central Wisconsin Regional Planning Commission Geographic Information System. Any other use/application of this information is the responsibility of the user and such use/application is at their own risk. East Central Wisconsin Regional Planning Commission disclaims all liability regarding fitness of the information for any use other than for East Central Wisconsin Regional Planning Commission business.

PREPARED FEBRUARY 2020 BY:
East Central Wisconsin Regional Planning Commission
ECWRPC



TD P:\138x-Regional SRTS\GIS_Mapping\Bicycle Walk Audits\2019\Appleton\Houdini\Houdini_Elementary.mxd

Huntley Elementary School Action Plan

Education & Encouragement

1. Participate in the Walking School Bus program to encourage students to walk to school and to alleviate traffic congestion on East Lindbergh Street and East Marquette Street.
2. Create a parent map and letter for parents to explain pick-up and drop-off scenarios at the school to create a safer walking and biking environment.
3. Participate in Safe Routes to School educational campaigns to educate parents and community members about safe driving, walking, and biking at school and in the community.

Engineering

1. Paint ladder style crosswalks on all crosswalks located adjacent to Huntley Elementary School to improve visibility of students walking in the crosswalks.
2. Work with the City of Appleton to add traffic control to the intersection of North Alexander Street and East Marquette Street.
3. Work with the City of Appleton to move the school zone signs, or trim the trees on the north side of East Lindbergh Street to improve the visibility of the signs.
4. Work with the City of Appleton to review parking options on East Marquette Street to alleviate congestion and improve traffic flow.

Enforcement

1. Enforce no parking in bus loading zone due to busses being pushed back into the crosswalk causing visibility issues and difficulties for students to cross.

Equity

1. Huntley Elementary School ranked in the low priority category of the Equity Analysis. Please reference the equity analysis on page 8 to learn more information.

Current Event and Program
Participation



Huntley Elementary School

Bicycle & Walk Audit

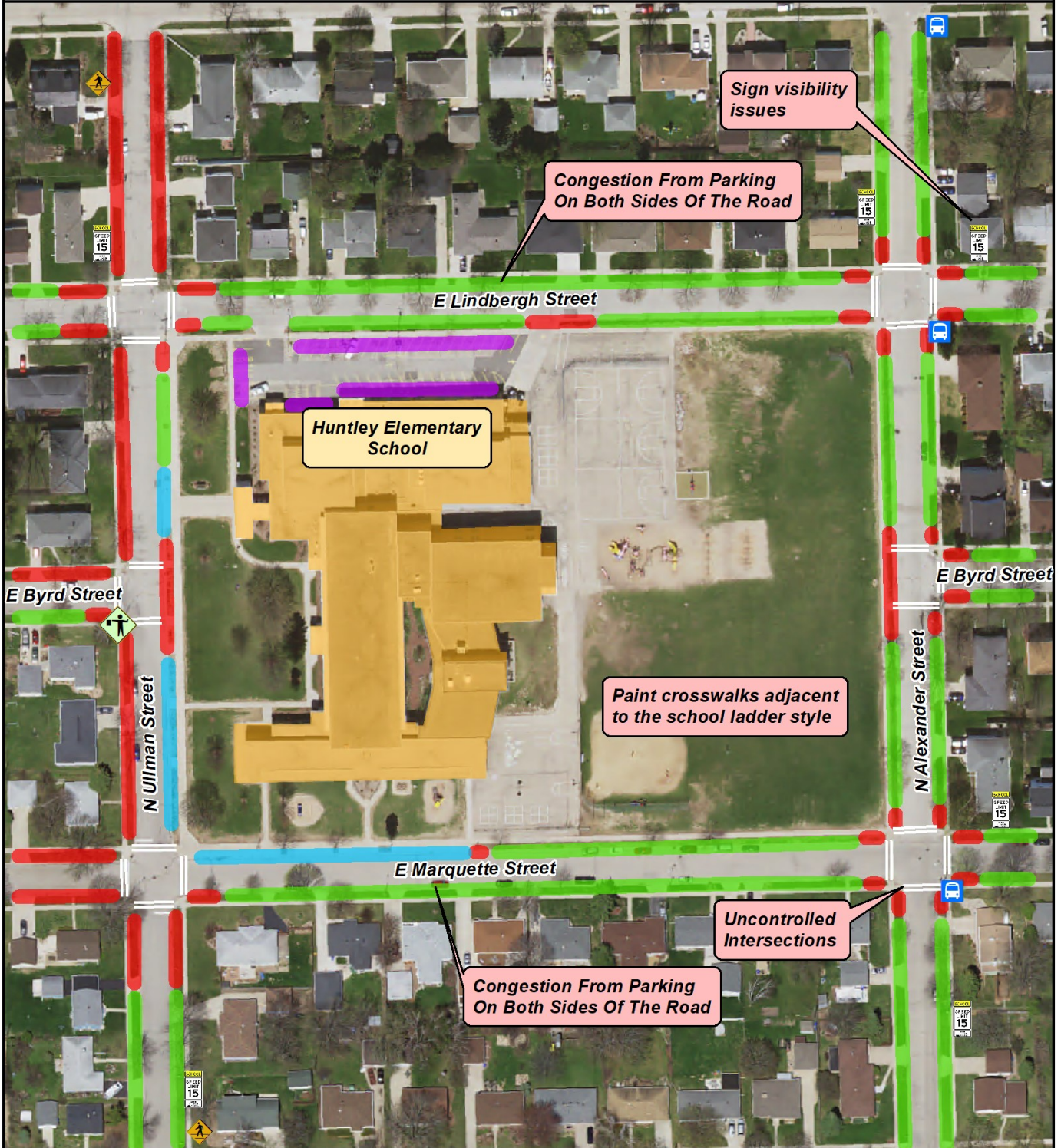
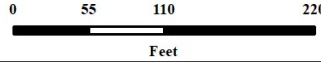
Legend

- | | | | |
|--|------------------|--|------------------|
| | Safety Patrol | | Transit Stop |
| | Crossing Guard | | Loading Zone |
| | Pedestrian Sign | | Bus Loading Zone |
| | School Zone Sign | | General Parking |
| | Bike Rack | | Staff Parking |
| | | | No Parking |

Source:
Base data provided by Outagamie County 2017.
SRTS data provided by ECWRPC 2019.

This data was created for use by the East Central Wisconsin Regional Planning Commission Geographic Information System. Any other use application of this information is the responsibility of the user and such use application is at their own risk. East Central Wisconsin Regional Planning Commission disclaims all liability regarding fitness of the information for any use other than for East Central Wisconsin Regional Planning Commission business.

PREPARED MARCH 2020 BY:



Jefferson Elementary School Action Plan

Education & Encouragement

1. Participate in Walk to School Day, Winter Walk to School Month, and Bike to School Day to encourage students to walk and bike to school.
2. Participate in Safe Routes to School educational campaigns to educate parents and community members about safe driving, walking, and biking at school and in the community.

Engineering

1. Decrease turn radius on West Prospect Avenue and South Mason Street to slow down turning speeds and reduce conflict points between cars and pedestrians.
2. Expand the parking lot to the south of the school to reduce the number of cars parking on South Mason Street and to improve safety for students arriving and departing school.
3. Paint ladder style crosswalks at all adjacent crosswalks to the school to increase visibility of students walking and biking. Make West Prospect Avenue and South Mason Street a priority due to traffic volume and visibility issues.

Enforcement

1. Enforce no parking in the bus loading zone on South Mason Street.

Equity

1. Jefferson Elementary School ranked in the medium priority category of the Equity Analysis. Please reference the equity analysis on pages 8 & 11 learn more information about providing resources to this school to make walking and biking safer for students.

Current Event and Program Participation



Jefferson Elementary School

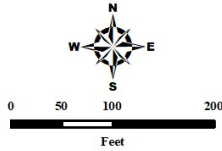
Bicycle & Walk Audit

Legend

-  Transit Stop
-  Crossing Guard
-  Pedestrian Sign
-  School Zone Sign
-  Bike Rack
-  Loading Zone
-  Bus Loading Zone
-  General Parking
-  Staff Parking
-  No Parking

Source:
Base data provided by Outagamie County 2017.
SRTS data provided by ECWRPC 2019.

This data was created for use by the East Central Wisconsin Regional Planning Commission Geographic Information System. Any other use/application of this information is the responsibility of the user and such use/application is at their own risk. East Central Wisconsin Regional Planning Commission disclaims all liability regarding fitness of the information for any use other than for East Central Wisconsin Regional Planning Commission business.



PREPARED FEBRUARY 2020 BY:



Johnston Elementary School Action Plan

Education & Encouragement

1. Educate parents on proper pick-up and drop-off driving behaviors using pick-up and drop-off procedure maps and a letter. Encourage drivers to pick-up and drop-off on the side of the street closest to the school, to not use driveways to turn around, to drive slower, and to use parking and loading zones correctly.
2. Encourage students to cross at the intersection of East Forest Street and East Clara Street using the crossing guard to prevent midblock crossing on South Theodore Street.
3. Run Project RADAR on South Theodore Street and East Clara Street to create awareness about slowing down in school zones.
4. Participate in Safe Routes to School educational campaigns to educate parents and community members about safe driving, walking, and biking at school and in the community.

Engineering

1. Paint ladder style crosswalks at the intersection of East Forest Street and East Clara Street to improve visibility of students walking and biking.

Enforcement

1. Enforce no parking on the south side of East Forest Street near the intersection of South Fredrick Street and East Forest Street.
2. Enforce no parking on the east side of East Clara Street.
3. Enforce no double parking in the travel lane on South Theodore Street to improve safety for students arriving and departing school.
4. Enforce school zone speed limit on South Theodore Street and East Clara Street.

Equity

1. Johnston Elementary School ranked in the medium priority category of the Equity Analysis. Please reference the equity analysis on page 8 to learn more information.

Current Event and Program Participation



Johnston Elementary School

Bicycle & Walk Audit

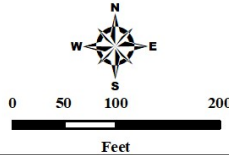
Legend

- | | | | |
|---|------------------|---|------------------|
|  | Safety Patrol |  | Loading Zone |
|  | Crossing Guard |  | Bus Loading Zone |
|  | Pedestrian Sign |  | General Parking |
|  | School Zone Sign |  | Staff Parking |
|  | Bike Rack |  | No Parking |

Source:
Base data provided by Outagamie County 2017.
SRTS data provided by ECWRPC 2019.

This data was created for use by the East Central Wisconsin Regional Planning Commission Geographic Information System. Any other use application of this information is the responsibility of the user and such use application is at their own risk. East Central Wisconsin Regional Planning Commission disclaims all liability regarding fitness of the information for any use other than for East Central Wisconsin Regional Planning Commission business.

PREPARED JANUARY 2020 BY:



Kaleidoscope Academy School Action Plan

Education & Encouragement

1. Participate in Walk to School Day, Winter Walk to School Month, Bike to School Day and start a Walking School Bus or Frequent Walker program to encourage students to walk and bicycle to, from, and at school.
2. Educate and encourage students to use the crosswalk on East Circle Street to prevent midblock crossing to the east side of North Drew Street.
3. Run Project RADAR on North Drew Street to create awareness about driving safe in school zones.
4. Participate in Safe Routes to School educational campaigns to educate parents and community members about safe driving, walking, and biking at school and in the community.

Engineering

1. Remove parking near the intersection of North Drew Street and East Brewster Street to reduce congestion and visibility issues near the crosswalk.
2. Work with the City of Appleton to review traffic calming measures at the intersection of East Brewster Street and North Durkee Street.
3. Paint ladder style crosswalks on all adjacent crosswalks to the school. Priority intersections to paint include East Brewster Street, North Durkee Street, North Drew Street and East Brewster Street.
4. Work with the City of Appleton to review the intersection of Circle Street and Durkee Street for traffic control.

Enforcement

1. Enforce the school zone speed limit on North Drew Street.

**Current Event and Program
Participation**

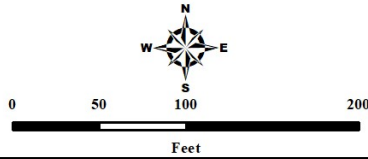


Kaleidoscope Academy

Bicycle & Walk Audit

Legend

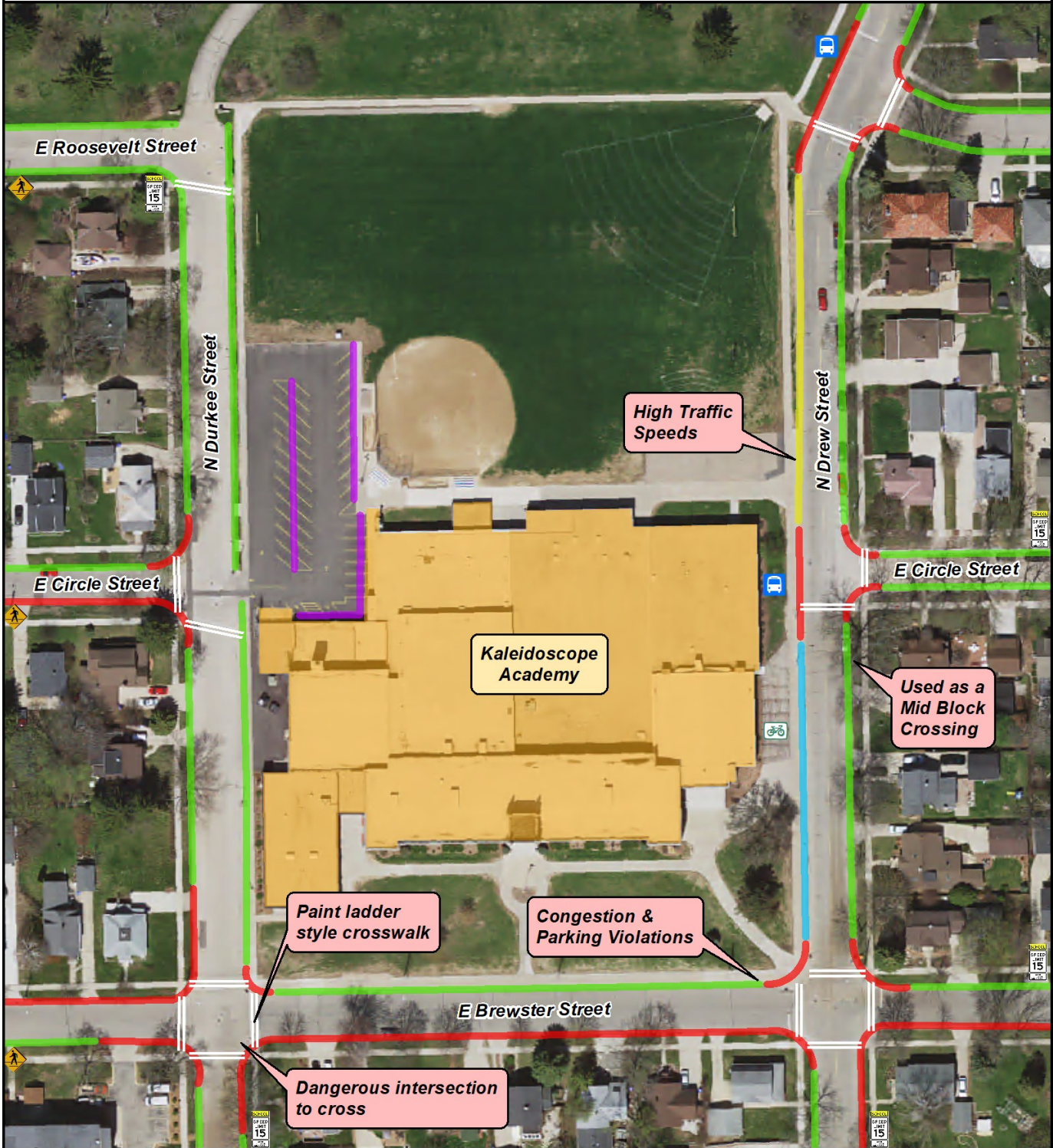
- | | | | |
|---|------------------|---|------------------|
|  | Safety Patrol |  | Transit Stop |
|  | Crossing Guard |  | Loading Zone |
|  | Pedestrian Sign |  | Bus Loading Zone |
|  | School Zone Sign |  | General Parking |
|  | Bike Rack |  | Staff Parking |
| | |  | No Parking |



Source:
Base data provided by Outagamie County 2017.
SRTS data provided by ECWRPC 2019.

This data was created for use by the East Central Wisconsin Regional Planning Commission Geographic Information System. Any other use/application of this information is the responsibility of the user and such use/application is at their own risk. East Central Wisconsin Regional Planning Commission disclaims all liability regarding fitness of the information for any use other than for East Central Wisconsin Regional Planning Commission business.

PREPARED MARCH 2020 BY:



Lincoln Elementary School Action Plan

Education & Encouragement

1. Participate in Walk to School Day, Winter Walk to School Month, Bike to School Day and start a Walking School Bus or Frequent Walker program to encourage students to walk and bicycle to, from, and at school.
2. Participate in Safe Routes to School educational campaigns to educate parents and community members about safe driving, walking, and biking at school and in the community.

Engineering

1. Work with the City of Appleton to make curb cuts ADA compliant at the intersection of North Summit Street and West Spring Street and paint ladder style crosswalks to improve visibility of students walking in the crosswalks.
2. Work with the City of Appleton to make the school zone speed limit signage consistent on both sides of West Spring Street. The school zone speed limit signs are not located even with each other currently.
3. Work with the City of Appleton to review the intersection of Spring Street and Summit Street,

Enforcement

1. Enforce designated loading zones for parent pick-up and drop off on the north side of West Spring Street. Cars are using the driveway for pick-up and cars are parking in the handicap parking space until another space becomes available.
2. Enforce drivers stopping at the stop sign at the intersection of West Spring Street and North Mason Street.

Equity

1. Lincoln Elementary School ranked in the medium priority category of the Equity Analysis. Please reference the equity analysis on pages 8 & 11 learn more information about providing resources to this school to make walking and biking safer for students.

Current Event and Program Participation



Lincoln Elementary School

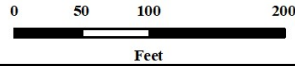
Bicycle & Walk Audit

Legend

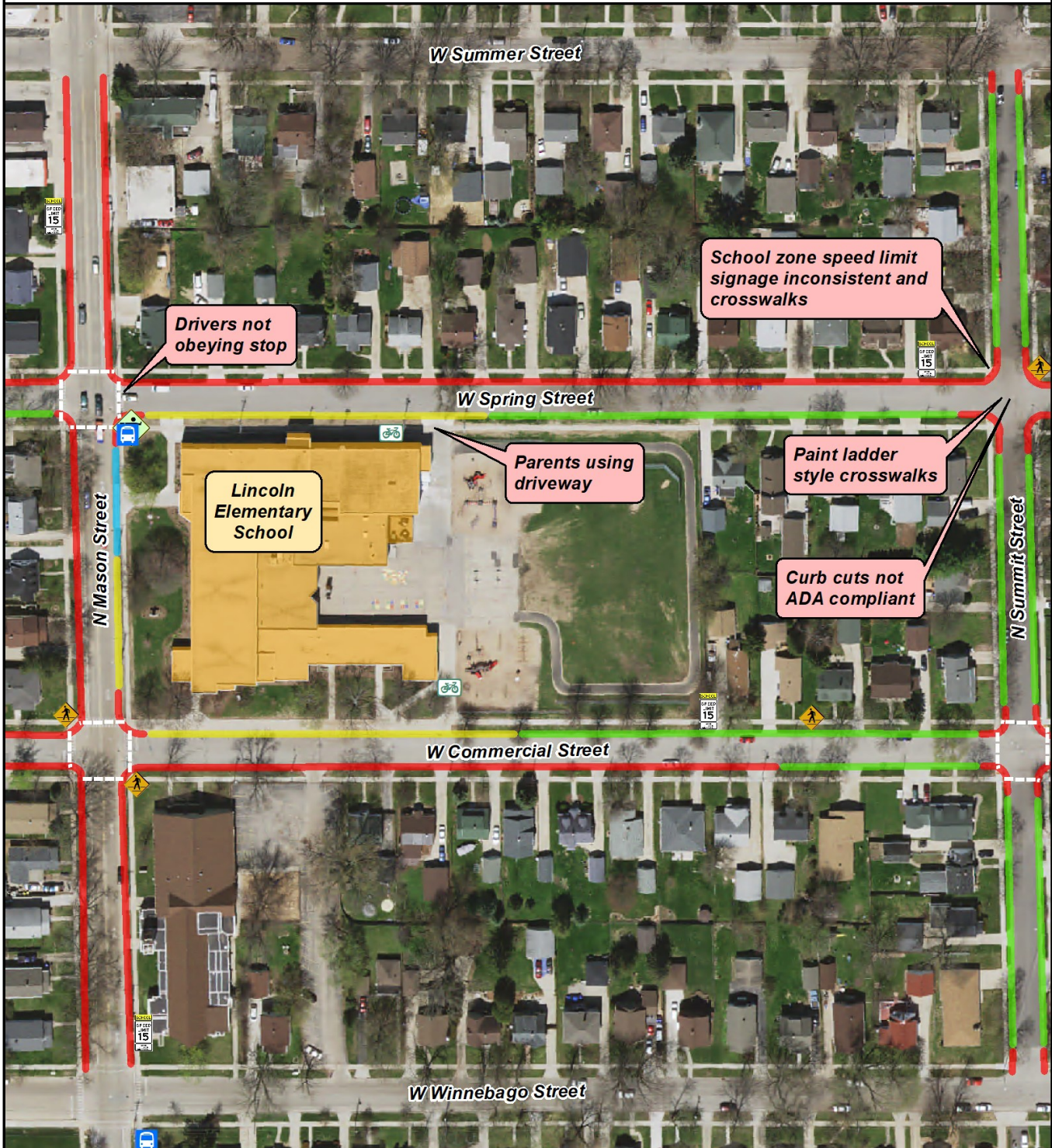
-  Safety Patrol
-  Crossing Guard
-  Pedestrian Sign
-  School Zone Sign
-  Bike Rack
-  Transit Stop
-  Loading Zone
-  Bus Loading Zone
-  General Parking
-  Staff Parking
-  No Parking

Source:
Base data provided by Outagamie County 2017.
SRTS data provided by ECWRPC 2019.

This data was created for use by the East Central Wisconsin Regional Planning Commission Geographic Information Systems. Any other use/application of this information is the responsibility of the user and such use/application is at their own risk. East Central Wisconsin Regional Planning Commission disclaims all liability regarding fitness of the information for any use other than for East Central Wisconsin Regional Planning Commission business.



PREPARED FEBRUARY 2020 BY:



Madison Middle School Action Plan

Education & Encouragement

1. Participate in Walk to School Day, Winter Walk to School Month, and Bike to School Day to encourage students to walk and bicycle to school.
2. Implement bicycling into the physical education curriculum to educate students on bike safety.
3. Run Project RADAR on South Carpenter Street to create awareness about slowing down and driving safe driving in school zones.
4. Educate bus drivers about driving slow down the alley leading to South Carpenter Street and being aware of students walking down this road.
5. Participate in Safe Routes to School educational campaigns to educate parents and community members about safe driving, walking, and biking at school and in the community.

Engineering

1. Redesign parking lot to have an aligned parking lot entrance with the service road along the school because busses have difficulties entering with the current staggered entrance.
2. Paint ladder style crosswalks at the intersection of East Coolidge Avenue and Carpenter Avenue to increase visibility of students crossing.
3. Remove the curb cut on the south side of the intersection of East Coolidge Avenue and Carpenter Street to discourage students from midblock crossing.

Enforcement

1. Enforce no parking in front of the service road driveway on South Carpenter Street because cars are blocking the busses from exiting.

Equity

1. Madison Middle School ranked in the low priority category of the Equity Analysis. Please reference the equity analysis on page 8 to learn more information.

**Current Event and Program
Participation**

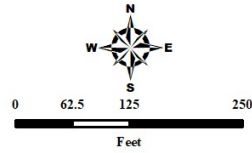
Not currently Participating

Madison Middle School

Bicycle & Walk Audit

Legend

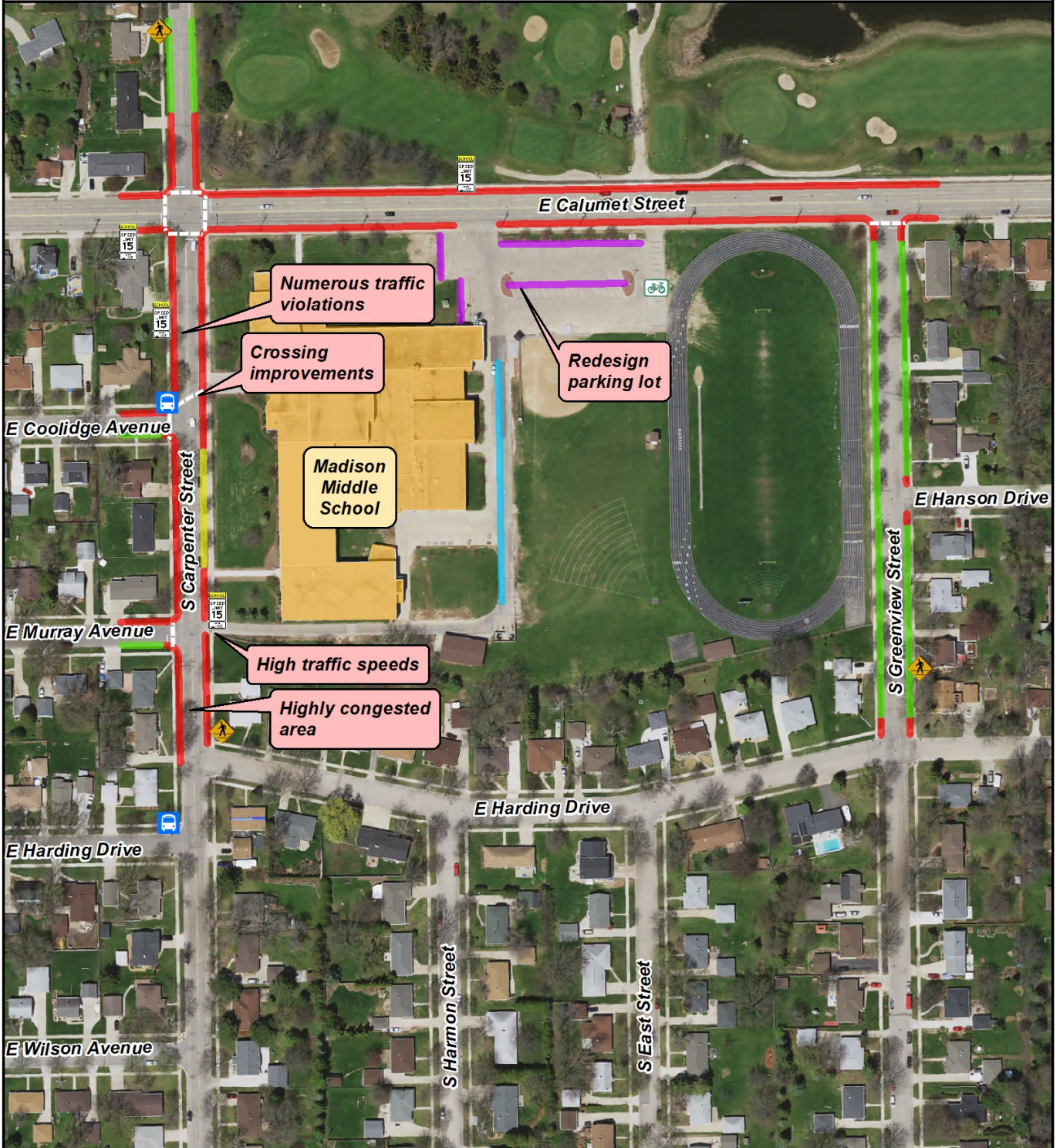
- | | | | |
|---|------------------|---|------------------|
|  | Transit Stop |  | Loading Zone |
|  | Crossing Guard |  | Bus Loading Zone |
|  | Pedestrian Sign |  | General Parking |
|  | School Zone Sign |  | Staff Parking |
|  | Bike Rack |  | No Parking |



Source:
Base data provided by Outagamie County 2017.
SRTS data provided by ECWRPC 2019.

This data was created for use by the East Central Wisconsin Regional Planning Commission Geographic Information Systems. Any other use or application of this information is the responsibility of the user and such use application is at their own risk. East Central Wisconsin Regional Planning Commission disclaims all liability regarding frames of the information for any use other than for East Central Wisconsin Regional Planning Commission business.

PREPARED MARCH 2020 BY:



McKinley Elementary School Action Plan

Education & Encouragement

1. Participate in Walk to School Day, Winter Walk to School Month, and Bike to School Day to encourage students to walk and bicycle to school.
2. Start a Walking School Bus program starting from Hoover Park to encourage more students to walk to school.
3. Educate parents on proper pick-up and drop-off procedures using a parent map and letter. Encourage parents not to use residential driveways to turn around and to have students exit their vehicles on the school side.
4. Encourage parents to pick-up and drop-off on South Greenview Street to alleviate congestion on East Taft Street and South Berry Drive. Parents are parking too close to the intersections and it is causing visibility issues.
5. Participate in Safe Routes to School educational campaigns to educate parents and community members about safe driving, walking, and biking at school and in the community.

Engineering

1. Designate the current parking area on the south side of East Taft Street as cab parking/handicapped parking to improve consistency and safety for all students.

Enforcement

1. Add a crossing guard at the intersection of South Berry Drive and East Taft Avenue due to the high volume of pedestrians crossing and cars driving through this intersection.
2. Enforce no parking zones on the south side of East Taft Street and the west side of South Berry Street.

Equity

1. McKinley Elementary School ranked in the medium priority category of the Equity Analysis. Please reference the equity analysis on pages 8 & 11 to learn more information about providing resources to this school to make walking and biking safer for students.

Current Event and Program Participation

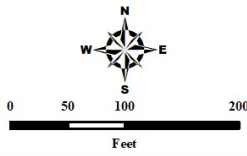


McKinley Elementary School

Bicycle & Walk Audit

Legend

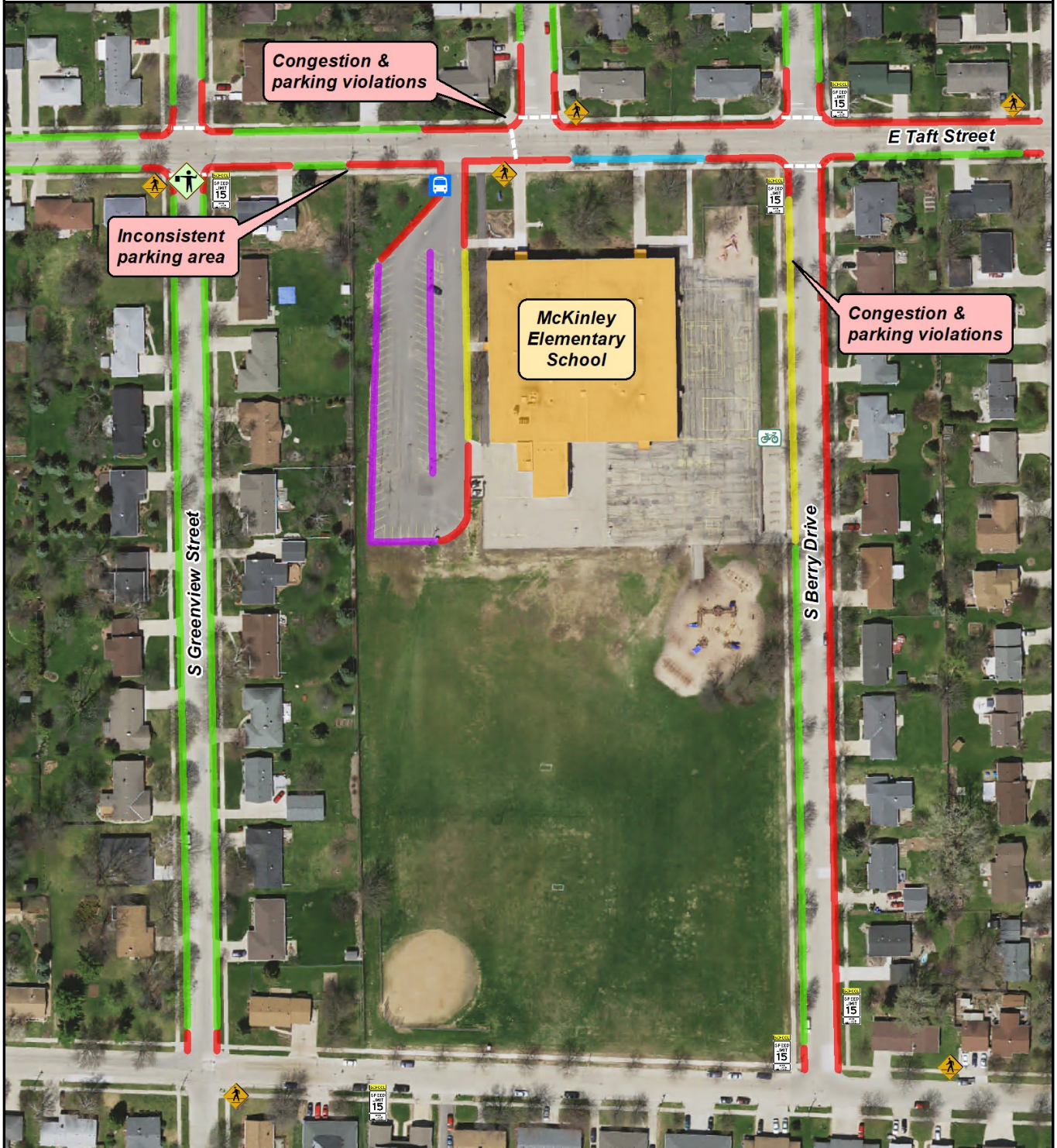
- | | | | |
|--|------------------|--|------------------|
| | Safety Patrol | | Transit Stop |
| | Crossing Guard | | Loading Zone |
| | Pedestrian Sign | | Bus Loading Zone |
| | School Zone Sign | | General Parking |
| | Bike Rack | | Staff Parking |
| | | | No Parking |



Source:
Base data provided by Outagamie County 2017.
SRTS data provided by ECWRPC 2019.

This data was created for use by the East Central Wisconsin Regional Planning Commission Geographic Information System. Any other use/application of this information is the responsibility of the user and such use/application is at their own risk. East Central Wisconsin Regional Planning Commission disclaims all liability regarding fitness of the information for any use other than for East Central Wisconsin Regional Planning Commission business.

PREPARED FEBRUARY 2020 BY:



Richmond Elementary School Action Plan

Education & Encouragement

1. Participate in sustainable walking programs such as the Walking School Bus or Frequent Walker programs to encourage students to walk to, or at school.
2. Encourage parents to not make a left turn on South Walden Avenue off of East John Street because congests traffic on East John Street.
3. Participate in Safe Routes to School educational campaigns to educate parents and community members about safe driving, walking, and biking at school and in the community.

Enforcement

1. Enforce no parking in loading zone on East John Street in front of the school to keep traffic flowing and to reduce congestion.

Equity

1. Richmond Elementary School ranked in the medium priority category of the Equity Analysis. Please reference the equity analysis on page 8 to learn more information.

Current Event and Program
Participation



Richmond Elementary School Bicycle & Walk Audit

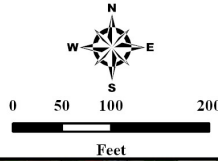
Legend

- | | | | |
|--|------------------|--|------------------|
| | Safety Patrol | | Transit Stop |
| | Crossing Guard | | Loading Zone |
| | Pedestrian Sign | | Bus Loading Zone |
| | School Zone Sign | | General Parking |
| | Bike Rack | | Staff Parking |
| | | | No Parking |

Source:
Base data provided by Outagamie County 2017.
SRIS data provided by ECWRPC 2019.

This data was created for use by the East Central Wisconsin Regional Planning Commission Geographic Information System. Any other use application of this information is the responsibility of the user and such use application is at their own risk. East Central Wisconsin Regional Planning Commission disclaims all liability regarding fitness of the information for any use other than for East Central Wisconsin Regional Planning Commission business.

PREPARED MARCH 2020 BY:



Wilson Middle School Action Plan

Education & Encouragement

1. Participate in Walk to School Day, Winter Walk to School Month, and Bike to School Day to encourage students to walk and bicycle to school.
2. Implement bicycling into the physical education curriculum to educate students on bike safety.
3. Participate in Safe Routes to School educational campaigns to educate parents and community members about safe driving, walking, and biking at school and in the community.

Engineering

1. Work with the City of Appleton to do a pedestrian lead time interval at the intersection of Mason, Badger, and Packard. Add ladder style crosswalks at each leg of intersection.
2. Add ladder style crosswalks at the intersection of North Badger Avenue and West Harris Street and make the curb cuts ADA compliant.
3. Please note there were challenges making left turns onto Mason Street from the driveway near West Franklin Street
4. Remove parking on the north side of Washington Street near the parking lot to improve visibility for drivers exiting the parking lot.
5. Add ladder style crosswalks at the intersection of College Avenue and Mason Street to improve visibility of students walking in the crosswalk.

Equity

1. Wilson Middle School ranked in the high priority category of the Equity Analysis. Please reference the equity analysis on pages 8 & 9 to learn more information about providing resources to this school to make walking and biking safer for students.

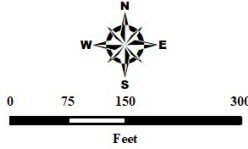
**Current Event and Program
Participation**

Not currently Participating

Wilson Middle School Bicycle & Walk Audit

Legend

- | | | | |
|--|------------------|--|------------------|
| | Transit Stop | | Loading Zone |
| | Crossing Guard | | Bus Loading Zone |
| | Pedestrian Sign | | General Parking |
| | School Zone Sign | | Staff Parking |
| | Bike Rack | | No Parking |



Source:
Base data provided by Outagamie County 2017.
SRTS data provided by ECWRPC 2017.

This data was created for use by the East Central Wisconsin Regional Planning Commission Geographic Information System. Any other use or application of this information is the responsibility of the user and such use application is at their own risk. East Central Wisconsin Regional Planning Commission disclaims all liability regarding fitness of the information for any use other than for East Central Wisconsin Regional Planning Commission business.

PREPARED FEBRUARY 2020 BY:
East Central Wisconsin Regional Planning Commission
ECWRPC



Classical School, Ferber Elementary School, Einstein Middle School Campus Recommendations

Partners

In the process of evaluating infrastructure improvements at Classical School, Ferber Elementary School, and Einstein Middle School the following partners should be included:

- Principals from each of the schools
- School District Engineering Services Coordinator
- Facilities & Operations/ Regular Transportation
- City of Appleton Director of Parks and Recreation
- City of Appleton Director of Department of Public Works
- City of Appleton Traffic Engineer
- Safe Routes to School Staff

Engineering

Einstein Parking Lot Option 1:

- Create a one lane entrance with a two lane left turn and right turn exit lanes.
- Have the busses enter in the park parking lot to drop off students and loop through the school parking lot to exit. We recommend adding a sidewalk between the school and park parking lot to create a safe walking space for students.
- Designate the front drop off loop as a parent drop-off loading zone with parents entering the south entrance and exiting the north entrance.

Einstein Parking Lot Option 2:

- Extend the service road on the east side of the school to connect to East Florida Avenue. Have buses enter in the Einstein parking lot off of North Durkee Street and loop around the school to exit on East Florida Avenue.
- Designate the front drop off loop as a parent drop-off loading zone with parents entering the south entrance and exiting the north entrance.

Ferber Parking Lot:

- Create a bus cutout on the south side of East Capitol Drive and have parents use the parking lot loop as a pick-up/ drop-off loading zone.

Classical School, Ferber Elementary School, Einstein Middle School Campus Recommendations

Additional Considerations

- To decrease congestion and traffic concerns at the three schools the school district should evaluate the staggered start and end times. This would be the least expensive improvement option.
- If Einstein Middle School expands to the east then the option number 2 service road extension will not work.
- In the next ten years there will be park improvements including a new playground at Ferber Elementary School. The school district should work with the City of Appleton Parks Department to evaluate the playground location, baseball diamonds, and possible trail connections throughout the campus.

Network Analysis Map

Einstein Middle, Classical, and
Ferber Elementary School

Source:
Base data provided by Outagamie County 2018.
SRFS data provided by ECWRPC 2019.

This data was created for use by the East Central Wisconsin Regional Planning Commission Geographic Information System. Any other use/application of this information is the responsibility of the user and such use/application is at their own risk. East Central Wisconsin Regional Planning Commission disclaims all liability regarding fitness of the information for any use other than for East Central Wisconsin Regional Planning Commission business.

PREPARED JANUARY 2020 BY:



- Crossing Guard
- Safety Patrol
- Bus Stop
- Bike Rack
- Bus Loading Zone
- General Parking
- Staff Parking
- Hug N Go
- No Parking
- Option #1 Bus Pick Up / Drop Off
- Option #1 Parent Pick Up / Drop Off
- Option #2 Parent or Bus Pick Up / Drop Off
- Sidewalk Through Parking Lot
- Proposed Sidewalks
- School Building Footprint

