



Neenah Joint School District

Safe Routes to School Action Plan

DRAFT

Abstract

TITLE: Neenah Joint School District Safe Routes to School Action Plan

CONTACT: Melissa Kraemer-Badtke

AUTHORS: Ashley Tracy, Safe Routes to School Planner
Hannah Keckeisen, Safe Routes to School Planner
Melissa Kraemer Badtke, Principal Transportation Planner

SUBJECT: Safe Routes to School Action Plan

DATE: July 2020

PLANNING AGENCY: East Central Wisconsin Regional Planning Commission
400 Ahnaip Street, Suite 100
Menasha, WI 54952
www.ecwrpc.org

This Safe Routes to School Action Plan describes the existing conditions around schools within the Neenah Joint School District. There are eleven public elementary and middle schools within the Neenah Joint School District. This action plan also includes future community improvements based on these conditions and information gathered by parents of students.

Table of Contents

Safe Routes to School and NJSD Background Information	1
The Six E's of Safe Routes to School.....	2
Neenah Joint School District Boundary Map.....	3
SRTS Event and Program Descriptions	4
SRTS Current Event and Program Participation	5
School District Equity Analysis	6
School District Equity Analysis Recommendations.....	7
Bicycle & Pedestrian Infrastructure Facilities Map	8-9
Bicycle & Pedestrian Infrastructure Recommendations	10
Bicycle & Pedestrian Infrastructure Recommendations Map.....	11-13
Elementary and Middle School 6 E Recommendations:	
Clayton Elementary School Action Plan.....	14
Coolidge Elementary School Action Plan.....	16
Hoover Elementary School Action Plan	18
Horace Mann Middle School Action Plan	20
Lakeview Elementary School Action Plan.....	22
Roosevelt Elementary School Action Plan.....	24
Shattuck Middle School Action Plan.....	26
Spring Road Elementary School Action Plan.....	28
Taft Elementary School Action Plan	30
Tullar Elementary School Action Plan	32
Wilson Elementary School Action Plan	34

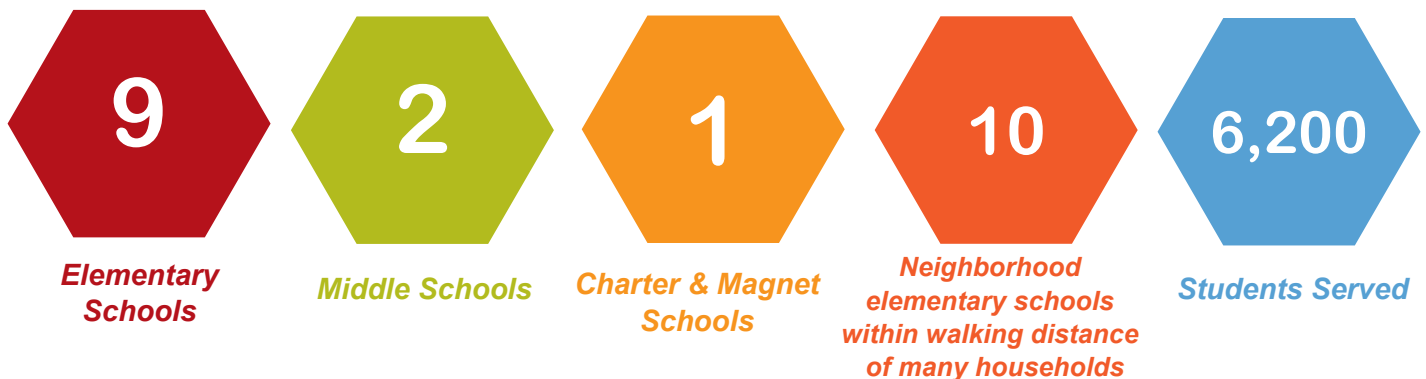
Safe Routes to School Background Information

The East Central Wisconsin Regional Safe Routes to School (SRTS) Program focuses on engaging and empowering schools and communities to foster healthy lifestyles through environmental changes and safe walking and bicycling. By working to make it safer and more appealing for students in grades K-8 to walk and bike to school, the Regional SRTS Program is continually making strides to improve childhood health, reduce traffic congestion and pollution, and create more livable communities.

Neenah Joint School District Background Information

This Action Plan identifies current transportation behaviors within the Neenah Joint School District. It lists known walking, bicycling, and driving barriers, and it identifies potential engineering and programmatic strategies to address those barriers. This Action Plan is available for use by the City and Town of Neenah, Village of Fox Crossing, Town of Clayton, and Town of Vinland, parents, students, and community members to guide the communities work on Safe Routes to School.

The Neenah Joint School District is located in the heart of the Fox Valley and serves over 6,200 students. Neenah continues to be a frontrunner in many areas including academics, athletics, and the arts. The District is committed to a focus on educational excellence for its students, professional staff and entire community.



District Transportation Policies

The District will transport students attending public or private schools located outside the corporate limits of the City of Neenah, but within the boundaries of the District, who reside in the District two or more miles from the nearest public or private school they are entitled to attend. Such students may qualify for transportation if they reside less than two miles from the nearest public or private school they are entitled to attend if unusual hazards (as defined below) exist for such students walking to and from school or if such students are disabled (as defined in AG8606). The two mile distance is measured from the residence to the school by the usually traveled route. Students attending public or private schools located within the corporate limits of the City of Neenah will not be transported whether they reside within or outside the City of Neenah unless unusual hazards (as defined below) exist for such students walking to and from school or if such students are disabled (as defined in AG8606). Students attending private schools located outside the boundaries of the District will not be transported.

The 6 E's of Safe Routes to School

Comprehensive Safe Routes to School initiatives have been shown to be more effective at increasing physical activity and reducing injuries. The Regional Safe Routes to School program is based on these principals of the six E's.



Education- Providing students and the community with the skills to walk and bicycle safely, educating them about the benefits of walking and bicycling, and teaching them about the broad range of transportation choices.



Encouragement- Generating enthusiasm and increased walking and bicycling for students through events, activities, and programs.



Engineering- Creating physical improvements to streets and neighborhoods that make walking and bicycling safer, more comfortable, and more convenient.



Enforcement- Deterring unsafe traffic behaviors and encouraging safe habits by people walking, bicycling, and driving in school zones, school neighborhoods, and along school routes.



Evaluation- Assessing which approaches are more or less successful, ensuring that programs and initiatives are supporting equitable outcomes, and identifying unintended consequences or opportunities to improve the effectiveness of each approach. Events and programs will be evaluated on a regular basis.



Equity- Ensuring that Safe Routes to School initiatives are benefiting all demographic groups, with particular attention to ensuring safe, healthy, and fair outcomes for low-income students, students of color, students of all genders, students with disabilities, and others.

School District Boundaries and Locations

Neenah Joint School District

Source:
Base data provided by Winnebago County 2017.
SRTS data provided by ECWRPC 2019.

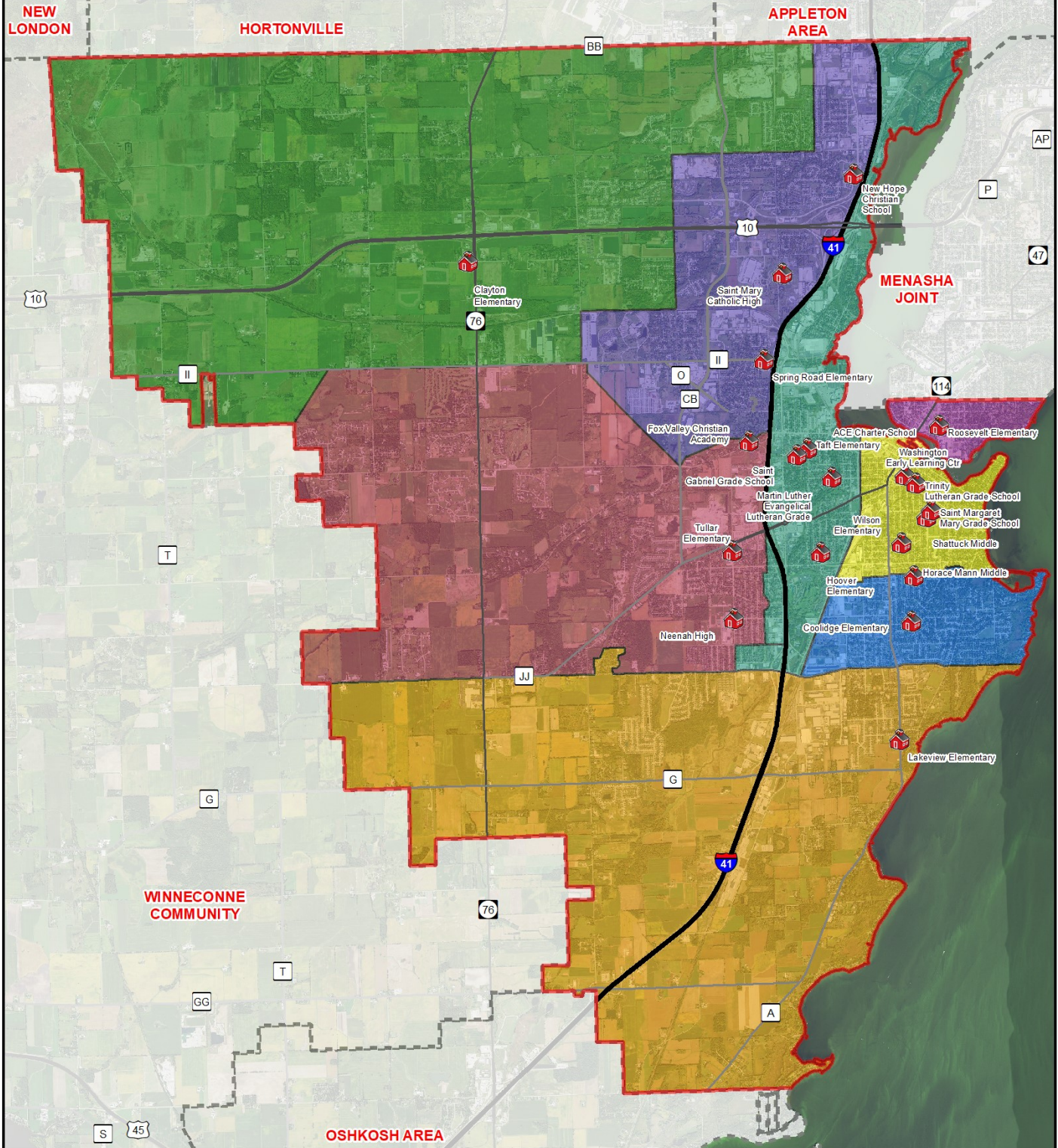
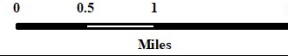
This data was created for use by the East Central Wisconsin Regional Planning Commission Geographic Information System. Any other use/application of this information is the responsibility of the user and such use/application is at their own risk. East Central Wisconsin Regional Planning Commission disclaims all liability regarding fitness of the information for any use other than for East Central Wisconsin Regional Planning Commission business.

PREPARED JULY 2020 BY:



- School Districts
- Horace Mann Middle School & Shattuck Middle School Service Area
- Clayton Elementary Service Area
- Coolidge Elementary Service Area
- Hoover Elementary School Service Area
- Lakeview Elementary School Service Area

- Spring Road Elementary Service Area
- Tullar Elementary School Service Area
- Wilson Elementary School Service Area
- Roosevelt Elementary School Service Area



Event and Program Descriptions



Walk to School Day— A global event that involves communities from more than 40 countries walking and bicycling to school on the same day. This event occurs annually on the first Wednesday in October.



Bike to School Day— Focuses on increasing bicycle safety and encourages students to bicycle to school. Bike to School Day typically falls on the second Wednesday in May.



Winter Walk to School Month— Is held in February and promotes walking to school year-round, even during the cold Wisconsin Winters.



Walking School Bus Program— Is a group of children who walk to school together under the supervision of a trained route leader.



Frequent Walker Program— Is a walking at school program and it encourages students to walk before, during, and after school by making it fun and rewarding.



Youth Engagement— Empowers elementary and middle school students, leaders, teachers, and adult facilitators by providing knowledge and resources to help lead activities and events that support active transportation.



Project RADAR— Creates awareness about safe driving habits around school zones by developing educational materials utilizing radar velocity speed guns.

SRTS Current Event and Program Participation

2020

School Name	Events			Programs			
	Walk to School Day	Winter Walk to School Month	Bike to School Day	Walking School Bus Program	Frequent Walker Program	Youth Engagement Program	Project RADAR Program
Clayton Elementary School							
Coolidge Elementary School	X		X				
Hoover Elementary School	X						
Horace Mann Middle School							
Lakeview Elementary School	X						
Roosevelt Elementary School							
Spring Road Elementary School	X	X	X		X		
Shattuck Middle School	X		X				
Taft Elementary School							
Tullar Elementary School							
Wilson Elementary School							

School District Equity Analysis

The Safe Routes to School Equity Analysis identifies schools that would benefit from additional resources to promote safe walking and bicycling. The percent of students receiving free and reduced cost lunch, the median household income, and the percent of arterials a half a mile around the school were collected and analyzed to identify the top five priority schools within the Neenah Joint School District. These data sets were evaluated because data shows that people walking and bicycling in low-income communities suffer from higher injury and fatality rates than the general population. Major arterial roadways and highways are also far more concentrated in low-income areas. By identifying the schools at the highest risk we can work to make walking and bicycling to school safe for all students.

School Name	Percent of Students Receiving Free and Reduced Cost Lunch	Median Household Income	Percent Arterials (Minor and Principal)	Equity Needs Score
Taft Elementary School	62.95%	\$54,072	56.40%	15
Hoover Elementary School	66.79%	\$45,640	45.94%	15
Roosevelt Elementary School	55.24%	\$55,395	21.10%	13
Wilson Elementary School	59.63%	\$55,501	12.70%	11
Spring Road Elementary School	36.70%	\$77,696	56.26%	11
Shattuck Middle School	30.98%	\$68,054	15.94%	9
Tullar Elementary School	21.12%	\$80,899	51.90%	7
Horace Mann Middle School	33.40%	\$68,054	12.29%	7
Coolidge Elementary School	40.21%	\$72,948	12.54%	7
Clayton Elementary School	20.08%	\$87,060	71.54%	7
Lakeview Elementary School	9.42%	\$83,881	16.49%	5

2017 DPI Data/ Winnebago County 2018/ Median HH Income 2019/2024 Esri Demographics






School District Equity Analysis Recommendations

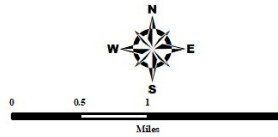
Students at under-privileged schools have typically higher rates of walking and biking to school. These students are particularly vulnerable to unsafe routes that lack bicycle and pedestrian accommodations, and where drivers speed. This equity analysis assessment identified the top three schools that could benefit from additional resources as well as locations that lack physical infrastructure to promote safe walking and biking.

School Name	Current Participation	Recommended Events and Programs	Arterials Located 1/2 Mile From School	Bicycle/Pedestrian Recommended Infrastructure
Roosevelt Elementary School	Not currently participating	Walk to School Day Winter Walk to School Month Bike to School Day Frequent Walker program	1st Street North Commercial Street Ahnaip Street Washington Street	Green Street and 6th Street– Sidewalk
Hoover Elementary School	Walk to School Day	Winter Walk to School Month Bike to School Day Frequent Walker program	West Cecil Street West Winneconne Avenue South Green Bay Road	Baldwin Street– Sidewalk
Taft Elementary School	Not currently participating	Walk to School Day Winter Walk to School Month Bike to School Day	Main Street North Lake Street North Green Bay Road	Plummer Court– Sidewalk Adams Street– Continue sidewalk on both sides of the street.

Bicycle & Pedestrian Network

Neenah Joint School District

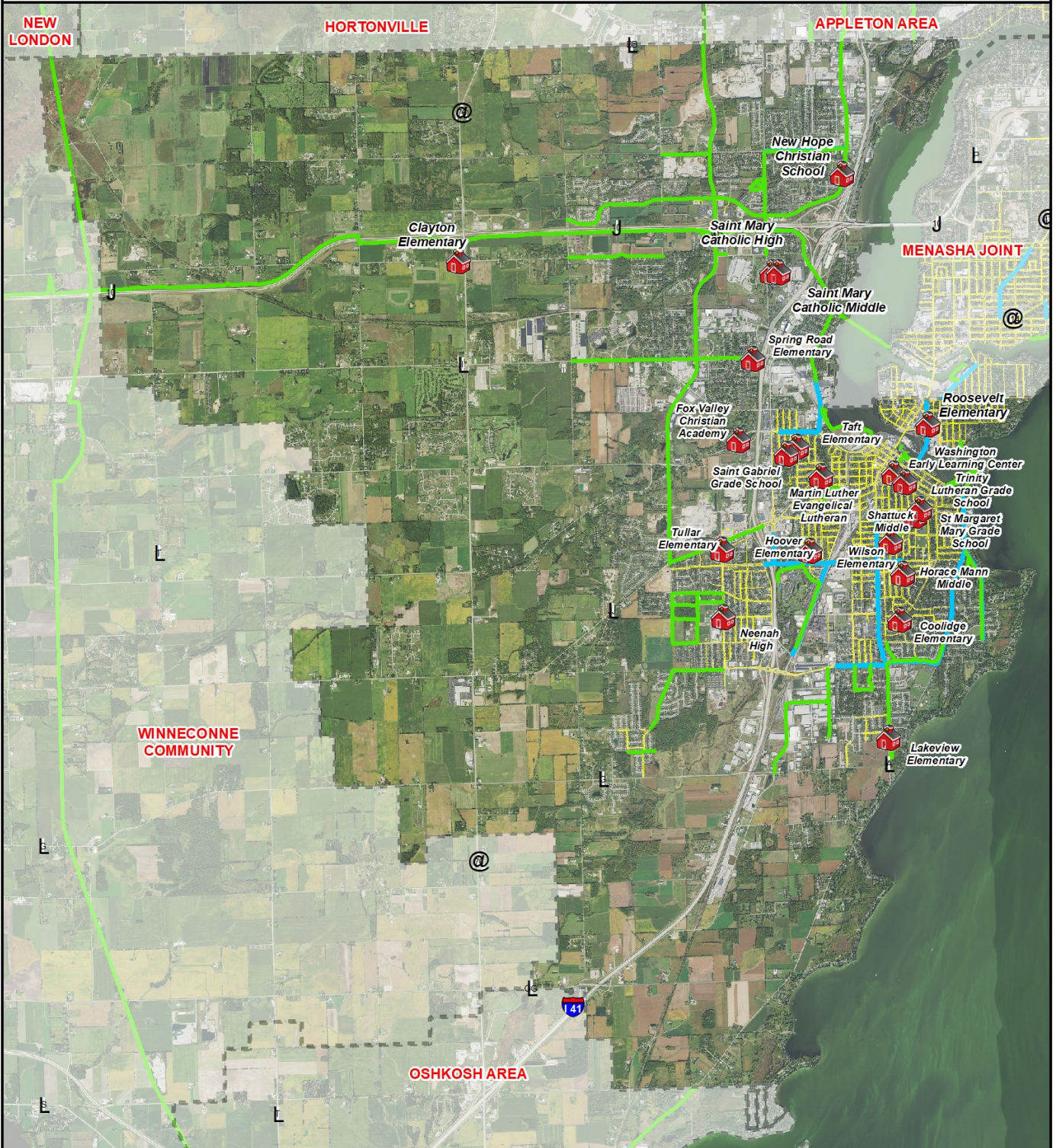
- Legend**
-  School Location
 -  Off Road Multi Use Path
 -  Bicycle Lane
 -  Sidewalk
 -  School Districts



Source:
Base data provided by Winnebago County 2017.
SRTS data provided by ECVRPC 2017.

This data was created for use by the East Central Wisconsin Regional Planning Commission Geographic Information System. Any other use application of this information is the responsibility of the user and such use application is at their own risk. East Central Wisconsin Regional Planning Commission disclaims all liability regarding fitness of the information for any use other than for East Central Wisconsin Regional Planning Commission business.

PREPARED JULY 2020 BY:

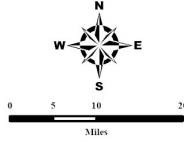


Bicycle & Pedestrian Network

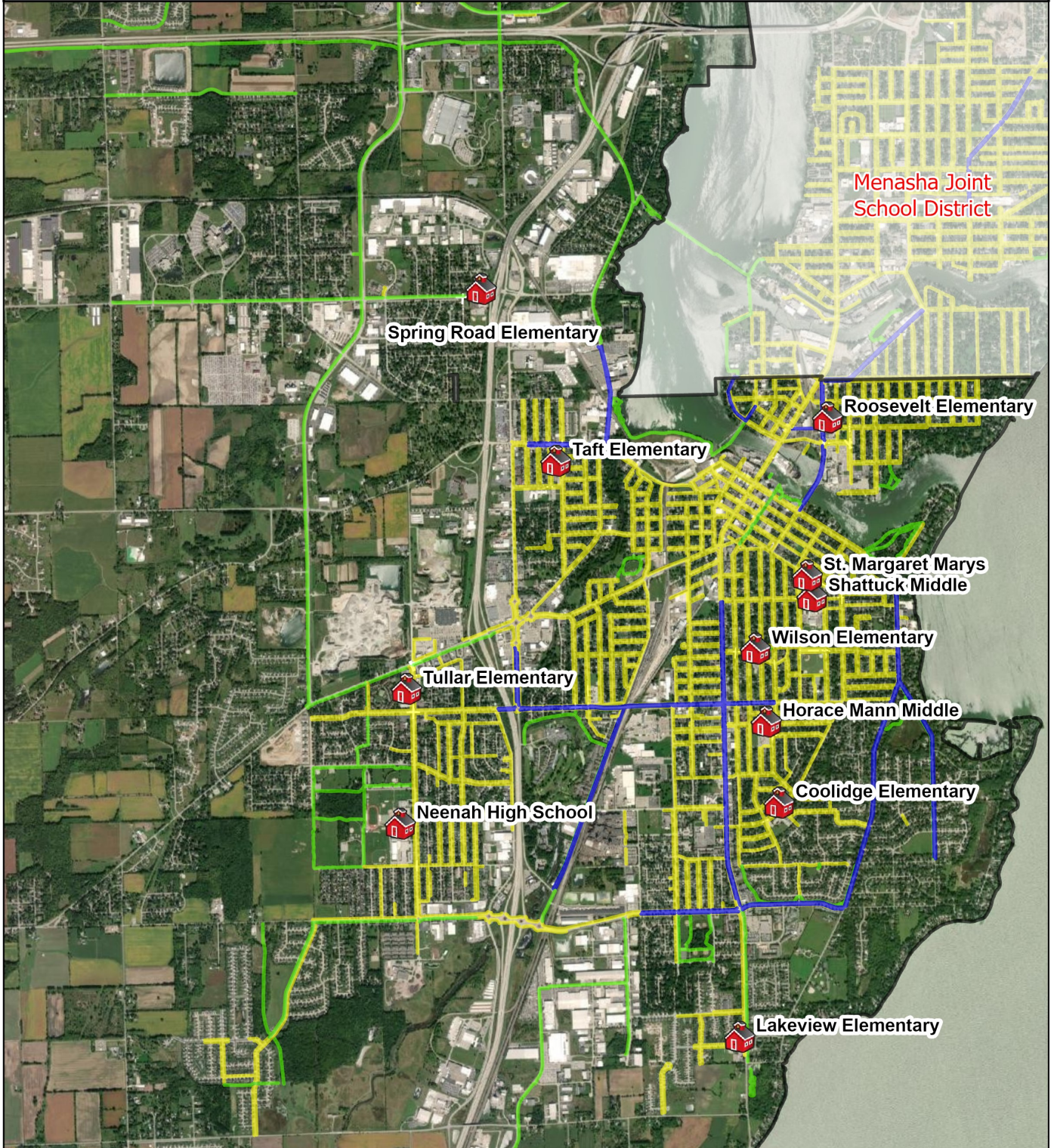
Neenah Joint School District
City of Neenah

Source:
Bike and Pedestrian data by ECWRPC 2020.
SRTS data provided by ECWRPC 2020.
This data was created for use by the East Central Wisconsin
Regional Planning Commission Geographic Information
System. Any other use application of this information is the
responsibility of the user and such use application is at their
own risk. East Central Wisconsin Regional Planning
Commission disclaims all liability regarding fitness of the
information for any use other than for East Central Wisconsin
Regional Planning Commission business.

-  Bike Lane
-  Trail
-  Sidewalk
-  School Locations
-  Neenah School District



PREPARED JULY 2020 BY:



P:\1138x_Regional_SRTS_GIS_Mapping\Action_Plans\Neenah_School_District\2020\Neenah_BikeandPed_REC.aprx
Source: Esri, Maxar, GeoEye, Earthstar Geographics, CNES/Airbus DS, USDA, USGS, AeroGRID, IGN, and the GIS User Community

Bicycle & Pedestrian Recommendations

Neenah School District

Road Name	From	To	Recommended Facility	Responsible Organization	Schools Impacted
South Park Avenue	S Commercial Street	Kuettel Court	Sidewalk	City of Neenah	Lakeview Elementary
Edgewood Drive	Campbell Street	Whittier Drive	Sidewalk	City of Neenah	Coolidge Elementary School
Whittier Drive	Hawthorne Street	Kraft Street	Sidewalk	City of Neenah	Coolidge Elementary School
Emerson Street	Whittier Drive	S Park Avenue	Sidewalk	City of Neenah	Coolidge Elementary School
Cedar Street	Fairview Avenue	Laudan Boulevard	Sidewalk	City of Neenah	Shattuck Middle School, St. Margaret Mary School
Baldwin Street	Winneconne Avenue	W Cecil Street	Sidewalk	City of Neenah	Hoover Elementary School
Green Street & 6th Street	4th Street	Hewitt Street	Sidewalk	City of Neenah	Roosevelt Elementary School
Wild Rose Lane	Byrd Avenue	Apple Blossom Drive	Complete sidewalks on the east side of the street	City of Neenah	Neenah High School
Babcock Street	W Cecil Street	Park Village Drive	Sidewalk	City of Neenah	Tullar Elementary School
Park Village Drive	Stuart Drive	Pilgrim Road	Continue sidewalk	City of Neenah	Tullar Elementary, Neenah High School
Plummer Court	S Green Bay Road	Adam Street	Continue sidewalk	City of Neenah	Taft Elementary School
Adams Street	Plummer Court	S Western Avenue	Continue sidewalks on both sides	City of Neenah	Taft Elementary School
Spring Road Drive	Winchester Road	Glenview Drive	Sidewalk	City of Neenah	Spring Road Elementary School
Glenview Drive	Deerwood Drive	Spring Road Drive	Sidewalk	City of Neenah	Spring Road Elementary School

Bicycle & Pedestrian Facility Recommendations



School Locations

Existing

- Bike Lane
- Trail
- Sidewalk

Recommendations

- Bike Lane
- Trail
- Sidewalk

Neenah Joint School District

Southeast



0 0.14 0.28 0.55 Miles

Source:
Bike and Pedestrian data by ECWRPC 2019.
SRTS data provided by ECWRPC 2019.
This data was created for use by the East Central Wisconsin Regional Planning Commission Geographic Information System. Any other use application of this information is the responsibility of the user and such use application is at their own risk. East Central Wisconsin Regional Planning Commission disclaims all liability regarding fitness of the information for any use other than for East Central Wisconsin Regional Planning Commission business.

PREPARED JUNE 2020 BY:



Path: P:\138x_Regional_SRTS_GIS_Mapping\Action_Plans\Neenah_School_District\2020\Neenah_BikeandPed_REC.aprx
Source: Esri, Maxar, GeoEye, Earthstar Geographics, CNES/Airbus DS, USDA, USGS, AeroGRID, IGN, and the GIS User Community

Bicycle & Pedestrian Facility Recommendations



- School Locations**
- Existing
- Bike Lane
 - Trail
 - Sidewalk
- Recommendations**
- Bike Lane
 - Trail
 - Sidewalk

Neenah Joint School District
Northeast



0 0.14 0.28 0.55
Miles

Source:
Bike and Pedestrian data by ECWRPC 2019.
SRIS data provided by ECWRPC 2019.
This data was created for use by the East Central Wisconsin
Regional Planning Commission Geographic Information
System. Any other use application of this information is the
responsibility of the user and such use application is at their
own risk. East Central Wisconsin Regional Planning
Commission disclaims all liability regarding fitness of the
information for any use other than for East Central Wisconsin
Regional Planning Commission business.

PREPARED JUNE 2020 BY:



Path: P:\138x_Regional_SRTS_GIS_Mapping\Action_Plans\Neenah_School_District\2020\Neenah_BikeandPed_REC.aprx
Source: Esri, Maxar, GeoEye, Earthstar Geographics, CNES/Airbus DS, USDA, USGS, AeroGRID, IGN, and the GIS User Community

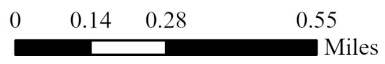
Bicycle & Pedestrian Facility Recommendations

 School Locations

- Existing
-  Bike Lane
 -  Trail
 -  Sidewalk
- Recommendations
-  Bike Lane
 -  Trail
 -  Sidewalk

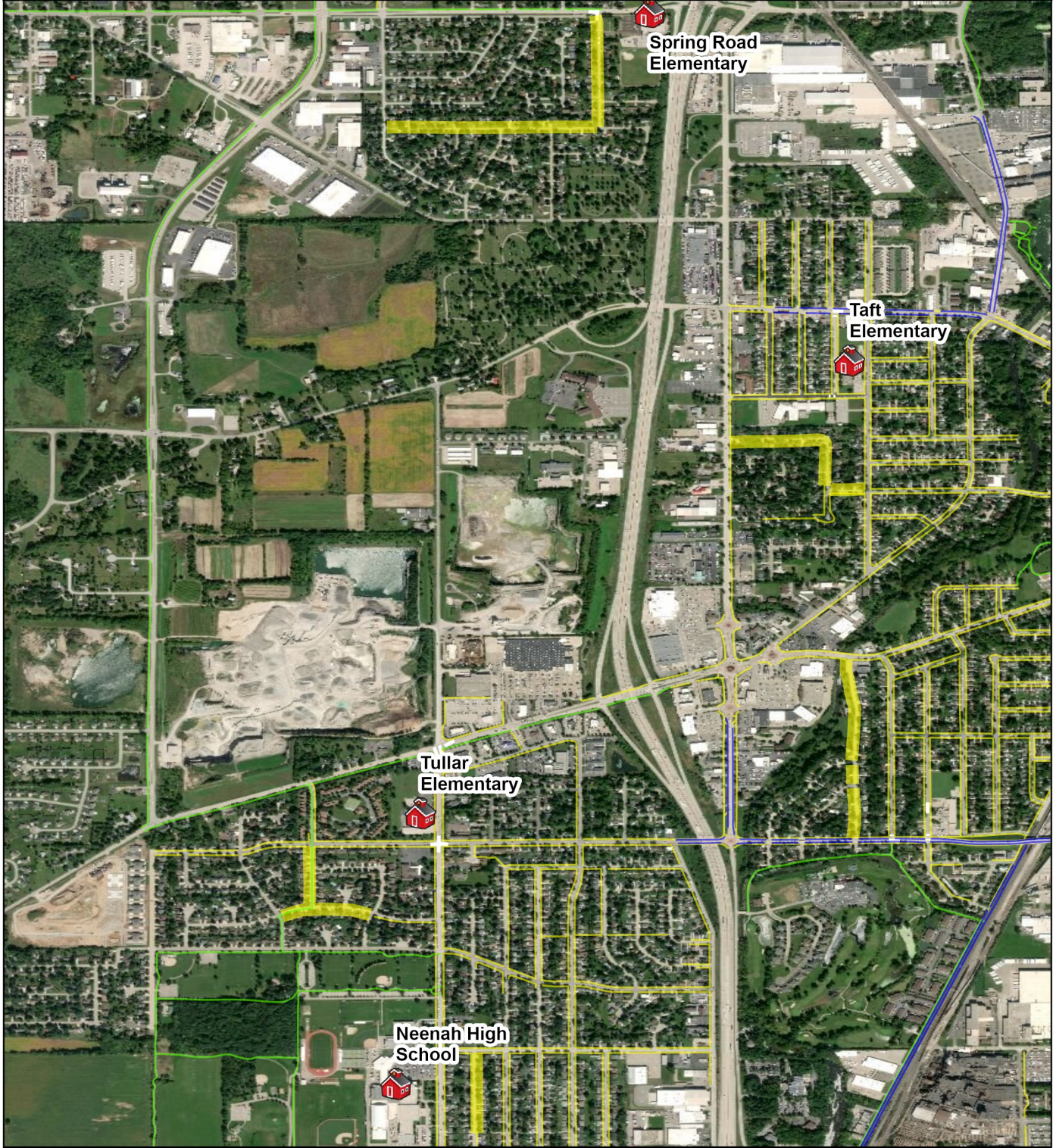
Neenah Joint School District

West



Source:
Bike and Pedestrian data by ECWRPC 2019.
SRTS data provided by ECWRPC 2019.
This data was created for use by the East Central Wisconsin Regional Planning Commission Geographic Information System. Any other use application of this information is the responsibility of the user and such use application is at their own risk. East Central Wisconsin Regional Planning Commission disclaims all liability regarding fitness of the information for any use other than for East Central Wisconsin Regional Planning Commission business.

PREPARED JUNE 2020 BY:



Path: P:\138x_Regional_SRTS_GIS_Mapping\Action_Plans\Neenah_School_District\2020\Neenah_BikeandPed_REC.aprx
Source: Esri, Maxar, GeoEye, Earthstar Geographics, CNES/Airbus DS, USDA, USGS, AeroGRID, IGN, and the GIS User Community

Clayton Elementary School Action Plan

Education & Encouragement

1. Participate in Walk to School Day, Winter Walk to School Month, and Bike to School Day events to encourage students to walk and bicycle to school.
2. Participate in the Frequent Walker Program to encourage students to be active and walking at school.
3. Participate in Project RADAR to educate students and community members about driving safe and slowing down in school zones.
4. Participate in Safe Routes to School educational campaigns to educate parents and community members about safe driving, walking, and biking at school and in the community.

Engineering

1. Make sure curb cuts are ADA compliant to allow access to all students.

Equity

1. Clayton Elementary School ranked in the low priority category of the Equity Analysis. Please reference the equity analysis on page 6 to learn more information.

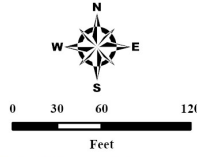
**Current Event and Program
Participation**

Not currently participating

Clayton Elementary School

Bicycle & Walk Audit

- | | | | |
|---|------------------|---|------------------|
|  | Safety Patrol |  | Transit Stop |
|  | Crossing Guard |  | Loading Zone |
|  | Pedestrian Sign |  | Bus Loading Zone |
|  | School Zone Sign |  | General Parking |
|  | Bike Rack |  | Staff Parking |
| | |  | No Parking |



Source:
 Base data provided by Winnebago County 2017.
 SRTS data provided by ECWRPC 2019.
 This data was created for use by the East Central Wisconsin
 Regional Planning Commission Geographic Information
 System. Any other use application of this information is the
 responsibility of the user and such use application is at their
 own risk. East Central Wisconsin Regional Planning
 Commission disclaims all liability regarding fitness of the
 information for any use other than for East Central Wisconsin
 Regional Planning Commission business.

PREPARED JULY 2020 BY:



Coolidge Elementary School Action Plan

Education & Encouragement

1. Participate in Walk to School Day, Winter Walk to School Month, and Bike to School Day events to encourage students to walk and bicycle to school.
2. Participate in the Walking School Bus program to encourage students to walk to school and/or the Frequent Walker program to encourage students to walk at school.
3. Participate in Project RADAR to educate students and community members about driving safe and slowing down in school zones.
4. Encourage students to walk their wheels on school grounds to reduce conflict points with other students and families.
5. Encourage parents to travel on Hawthorne Street and Campbell Street instead of driving on Alcott Drive. This is encouraged to eliminate congestion and left turn difficulties at the intersections of Hawthorne Street and Alcott Drive and Campbell Street and Alcott Drive.
6. Participate in Safe Routes to School educational campaigns to educate parents and community members about safe driving, walking, and biking at school and in the community.

Engineering

1. Paint ladder style crosswalks at the intersections of Alcott Drive and Hawthorne Street / Crescent Drive and Campbell Street and Alcott Drive to improve visibility of students walking and bicycling.
2. Make the curb cuts American with Disabilities Act (ADA) compliant at the intersections of Crescent Drive and Congress Street and Campbell Street and Alcott Drive .
3. Work with the City of Neenah to add traffic calming measures on Alcott Drive to slow down traffic speeds.

Enforcement

1. Enforce stopping for bicycle and pedestrian crossings at the intersections of Hawthorne Street and Alcott Drive and Campbell Street and Alcott Drive.
2. Enforce school zone speed limit on Alcott Drive to make it safer for students walking and bicycling.

Equity

1. Coolidge Elementary School ranked in the low priority category of the Equity Analysis. Please reference the equity analysis on page 6 to learn more information.

**Current Event and Program
Participation**

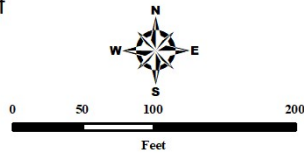


Coolidge Elementary School

Bicycle & Walk Audit

Legend

-  Crossing Guard
-  Pedestrian Sign
-  School Zone Sign
-  Bike Rack
-  Parent Pick Up & Drop Off
-  Bus Loading Zone
-  General Parking
-  Staff Parking
-  No Parking



Source:
Base data provided by Winnebago County 2015.
SRTS data provided by ECWRPC 2019.

This data was created for use by the East Central Wisconsin Regional Planning Commission Geographic Information System. Any other use/application of this information is the responsibility of the user and such use/application is at their own risk. East Central Wisconsin Regional Planning Commission disclaims all liability regarding fitness of the information for any use other than for East Central Wisconsin Regional Planning Commission business.

PREPARED OCTOBER 2019 BY:



Hoover Elementary School Action Plan

Education & Encouragement

1. Participate in Walk to School Day, Winter Walk to School Month, and Bike to School Day events to encourage students to walk and bicycle to school.
2. Participate in the Walking School Bus program to encourage students to walk to school and/or the Frequent Walker program to encourage students to walk at school.
3. Participate in Project RADAR to educate students and community members about driving safe and slowing down in school zones.
4. Educate parents on pick-up and drop-off procedures using a parent map and letter and encourage them to be kind and courteous to others.
5. Encourage students to use the crossing guard at the intersection of Reddin Avenue and West Cecil Street because it is unsafe for them to cross at the intersection of West Cecil Street and Hunt Avenue.

Engineering

1. Replace school zone signage on Zemlock Avenue as it is not Manual on Uniform Traffic Control Devices (MUTCD) compliant.

Enforcement

1. Enforce no parking near the midblock crossing on Hunt Avenue to improve visibility of students crossing in the crosswalk.
2. Enforce school zone speed limits on Cecil Street to make it safer for students walking and bicycling.
3. Enforce a complete stop at the intersection of Reddin Avenue and Cecil Street to improve the safety of students crossing at the crosswalk.

Equity

1. Hoover Elementary School ranked in the high priority category of the Equity Analysis. Please reference the equity analysis on pages 6 & 7 to learn more information about providing resources to this school to make walking and biking safer for students.

**Current Event and Program
Participation**

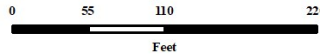


Hoover Elementary School

Bicycle & Walk Audit

Legend

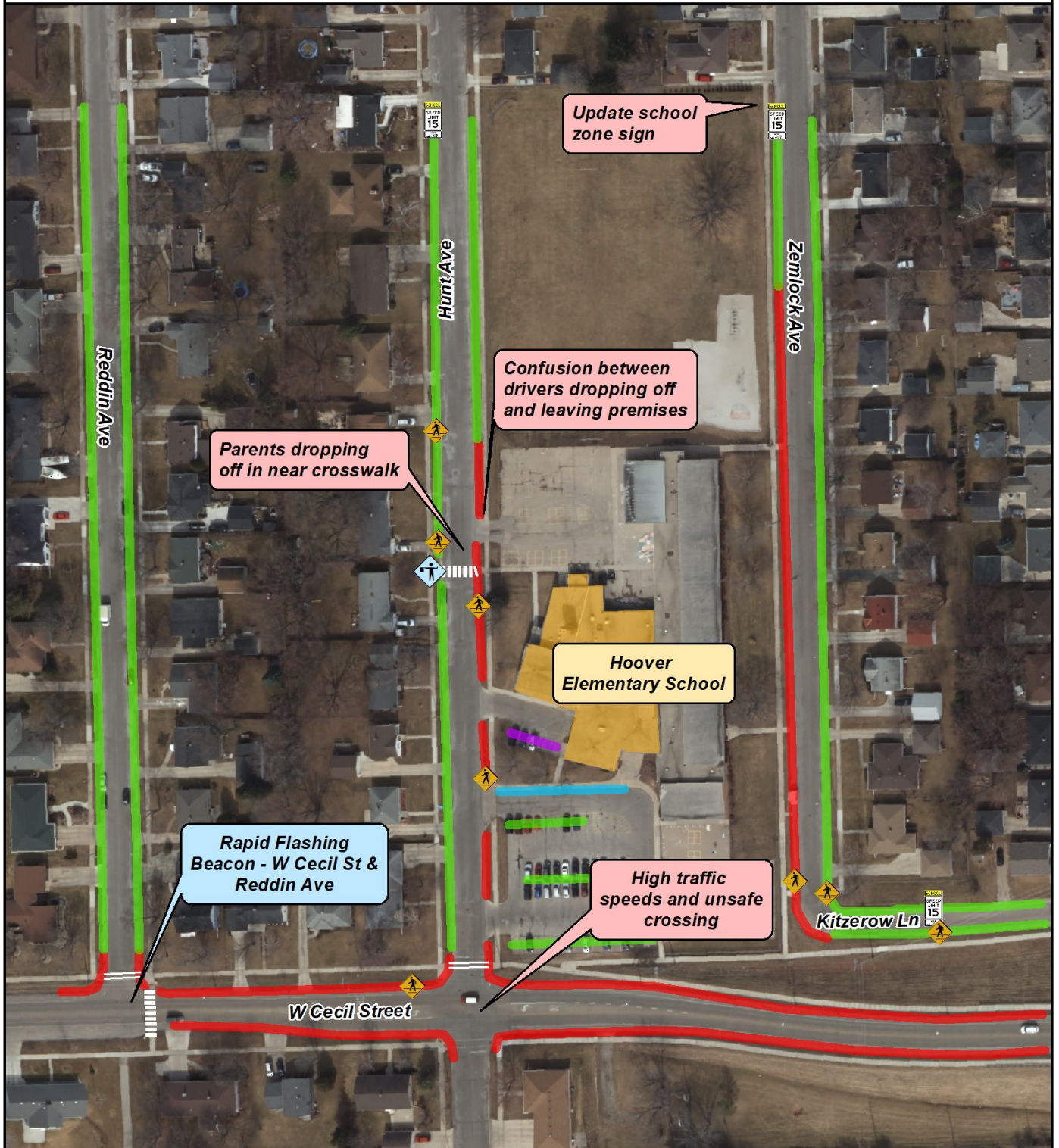
- | | | | |
|---|------------------|---|---------------------------|
|  | Crossing Guard |  | Parent Pick Up & Drop Off |
|  | Pedestrian Sign |  | Bus Loading Zone |
|  | School Zone Sign |  | General Parking |
|  | Bike Rack |  | Staff Parking |
| | |  | No Parking |



Source:
Base data provided by Winnebago County 2015.
SRTS data provided by ECWRPC 2019.

This data was created for use by the East Central Wisconsin Regional Planning Commission Geographic Information Systems. Any other use application of this information is the responsibility of the user and such use application is at their own risk. East Central Wisconsin Regional Planning Commission disclaims all liability regarding fitness of the information for any use other than for East Central Wisconsin Regional Planning Commission business.

PREPARED MARCH 2020 BY:



Horace Mann Middle School Action Plan

Education & Encouragement

1. Participate in Walk to School Day, Winter Walk to School Month, and Bike to School Day events to encourage students to walk and bicycle to school.
2. Participate in the Walking School Bus program to encourage students to walk to school and/or the Frequent Walker program to encourage students to walk at school.
3. Implement bicycling into the physical education curriculum to teach students bicycling safety skills.
4. Encourage parents to pull up to the southwest side of Oak Street for morning drop-off to reduce traffic congestion on the northwest side of Oak Street. Traffic backs up into the intersection of Oak Street and Haylett Street.
5. Educate and encourage students to use the crosswalk at the intersection of Kessler Drive and Oak Street
6. Participate in Safe Routes to School educational campaigns to educate parents and community members about safe driving, walking, and biking at school and in the community.

Engineering

1. Paint ladder style crosswalks on Kessler Dr. and repaint the crosswalks on Oak Street to improve visibility of students crossing.
2. Paint ladder style crosswalks at the intersection of Haylett Street and Higgens Avenue to improve visibility of students walking in the crosswalk.
3. Insert curb cuts at the intersection of Haylett Street and Higgens Avenue to make the crosswalks ADA compliant..

Equity

1. Horace Mann Middle School ranked in the low priority category of the Equity Analysis. Please reference the equity analysis on page 6 to learn more information.

**Current Event and Program
Participation**

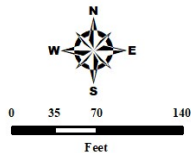
Not currently participating

Horace Mann Middle School

Bicycle & Walk Audit

Legend

- | | | | |
|---|------------------|---|------------------|
|  | Crossing Guard |  | Loading Zone |
|  | Pedestrian Sign |  | Bus Loading Zone |
|  | School Zone Sign |  | General Parking |
|  | Bike Rack |  | Staff Parking |
| | |  | No Parking |



Source:
Base data provided by Winnebago County 2017.
SRTS data provided by ECWRPC 2019.

This data was created for use by the East Central Wisconsin Regional Planning Commission's Geographic Information Systems. Any other use/application of this information is the responsibility of the user and such use/application is at their own risk. East Central Wisconsin Regional Planning Commission disclaims all liability regarding fitness of the information for any use other than for East Central Wisconsin Regional Planning Commission business.

PREPARED MARCH 2020 BY:



Lakeview Elementary School Action Plan

Education & Encouragement

1. Participate in Walk to School Day, Winter Walk to School Month, and Bike to School Day events to encourage students to walk and bicycle to school.
2. Participate in the Walking School Bus program to encourage students to walk to school and/or the Frequent Walker program to encourage students to walk at school.
3. Educate parents about leaving space for school busses turning left into the school parking lot off of Olde School Road through a parent pick-up and drop-off map and letter.
4. Participate in Safe Routes to School educational campaigns to educate parents and community members about safe driving, walking, and biking at school and in the community.

Engineering

1. Remove parking on the north side of Olde School Rd near the intersection of S Commercial Street and Olde School Road to create more space for busses turning left onto Olde School Road.
2. Designate the parking lot in the front of the school as a bus loading only zone to reduce congestion and conflicts with car traffic.

Enforcement

1. Enforce school zone speed limit on South Commercial Street to make it safer for students walking and bicycling.

Equity

1. Lakeview Elementary School ranked in the low priority category of the Equity Analysis. Please reference the equity analysis on page 6 to learn more information.

**Current Event and Program
Participation**

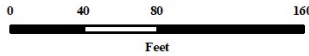


Lakeview Elementary School

Bicycle & Walk Audit

Legend

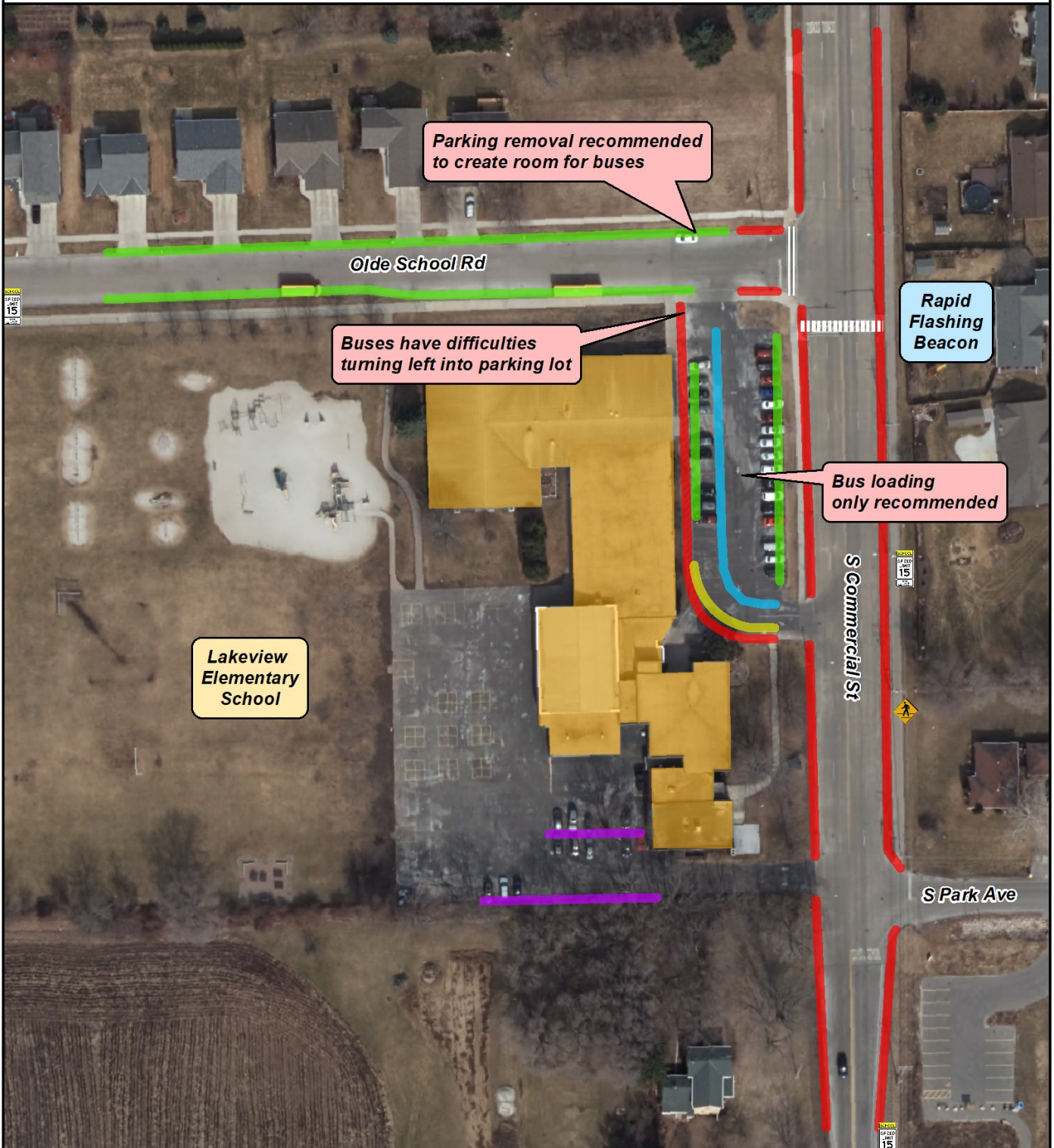
-  Crossing Guard
-  Pedestrian Sign
-  School Zone Sign
-  Bike Rack
-  Parent Pick Up & Drop Off
-  Bus Loading Zone
-  General Parking
-  Staff Parking
-  No Parking



Source:
Base data provided by Winnebago County 2015.
SRTS data provided by ECWRPC 2019.

This data was created for use by the East Central Wisconsin Regional Planning Commission Geographic Information System. Any other use/application of this information is the responsibility of the user and such use/application is at their own risk. East Central Wisconsin Regional Planning Commission disclaims all liability regarding fitness of the information for any use other than for East Central Wisconsin Regional Planning Commission business.

PREPARED OCTOBER 2019 BY:



Roosevelt Elementary School Action Plan

Education & Encouragement

1. Participate in Walk to School Day, Winter Walk to School Month, and Bike to School Day events to encourage students to walk and bicycle to school.
2. Participate in the Frequent Walker program to encourage students to walk at school.
3. Educate and encourage parents and students to use the designated crosswalks on 1st Street or 2nd Street to prevent unsafe midblock crossings.
4. Participate in Safe Routes to School educational campaigns to educate parents and community members about safe driving, walking, and biking at school and in the community.

Engineering

1. Make the curb cuts at the intersections surrounding the school ADA compliant. These intersections include 3rd Street and East Forest Avenue, 1st Street and East Forest Avenue, and 3rd Street and East North Water Street.
2. Paint ladder style crosswalks at the intersection of East Forest Avenue and 3rd Street to improve visibility of students walking in the crosswalk.
3. Paint ladder style crosswalks on East North Water Street at the intersection of East North Water Street and 3rd Street.

Equity

1. Roosevelt Elementary School ranked in the high priority category of the Equity Analysis. Please reference the equity analysis on pages 6 & 7 to learn more information about providing resources to this school to make walking and biking safer for students.

**Current Event and Program
Participation**

Not currently participating

Roosevelt Elementary School

Bicycle & Walk Audit

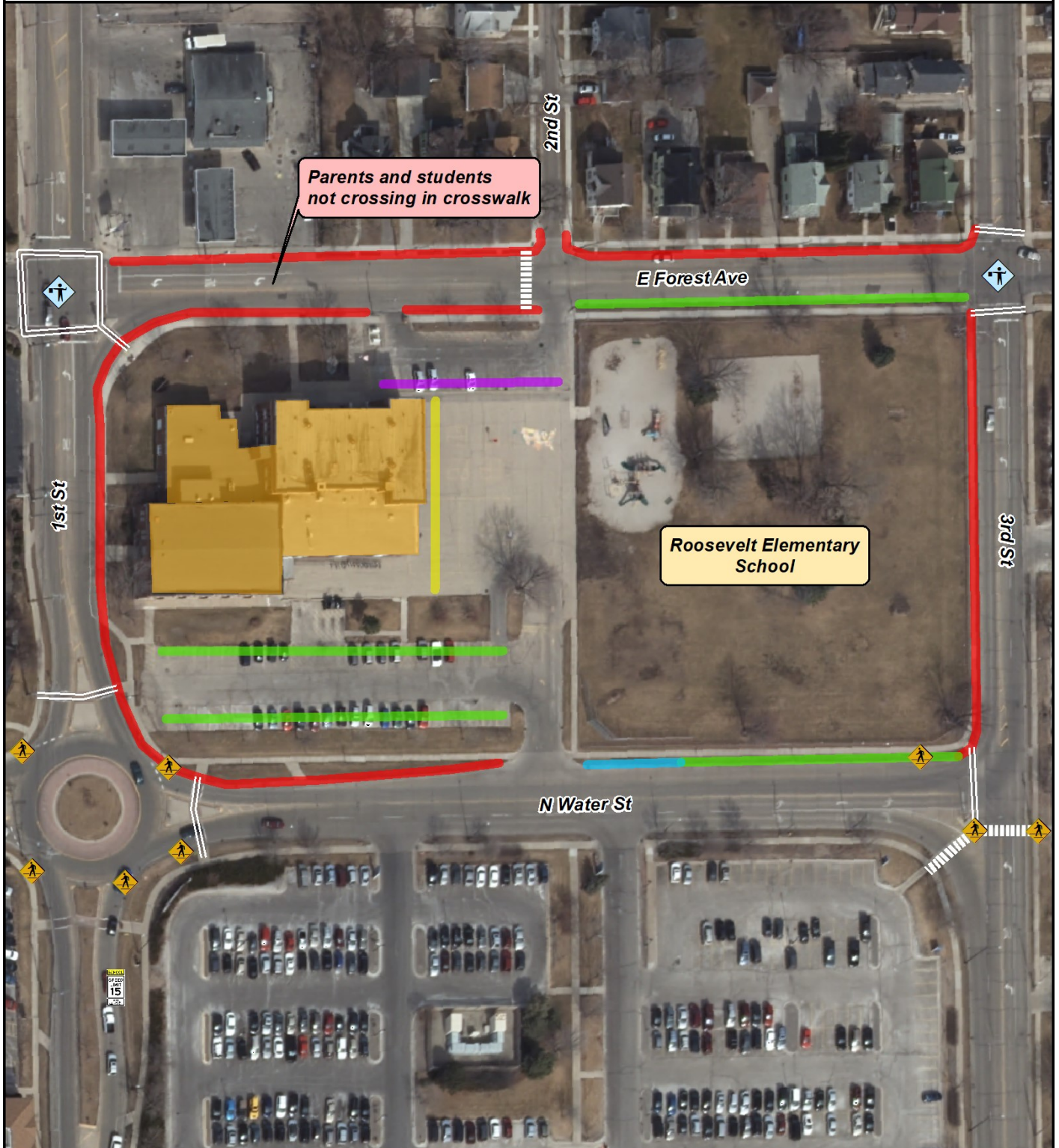
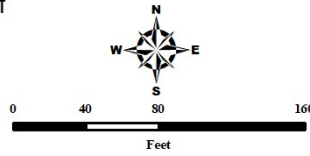
Legend

-  Crossing Guard
-  Pedestrian Sign
-  School Zone Sign
-  Bike Rack
-  Parent Pick Up & Drop Off
-  Bus Loading Zone
-  General Parking
-  Staff Parking
-  No Parking

Source:
Base data provided by Winnebago County 2015.
SRTS data provided by ECWRPC 2019.

This data was created for use by the East Central Wisconsin Regional Planning Commission Geographic Information System. Any other use/application of this information is the responsibility of the user and such use/application is at their own risk. East Central Wisconsin Regional Planning Commission disclaims all liability regarding fitness of the information for any use other than for East Central Wisconsin Regional Planning Commission business.

PREPARED OCTOBER 2019 BY:



Shattuck Middle School Action Plan

Education & Encouragement

1. Educate and encourage students to use the crosswalks to safely cross the street to prevent them from unsafe midblock crossings.
2. Encourage parents to pick up their students from remote locations to reduce the traffic at and around the school and to encourage more students to walk.
3. Participate in the Walking School Bus program starting to encourage more students to walk and reduce car congestion. The Walking School Bus could start at Quarry Park and walk to school.
4. Implement bicycling into physical education curriculum to teach students bicycle safety skills.
5. Participate in Safe Routes to School educational campaigns to educate parents and community members about safe driving, walking, and biking at school and in the community.

Engineering

1. Paint ladder style crosswalks at the intersections of Division Street and Elm Street, Laudon Boulevard and Reed Street, and Division Street and Reed Street to improve visibility of students crossing in the crosswalks.
2. Add a sidewalk extension on the east side of Elm Street from the parking lot to Cecil Street.
3. Insert a curb cut on the east side of Elm Street at the intersection of Elm Street and Laudan Boulevard. Paint ladder style crosswalks to improve visibility of students crossing.

Enforcement

1. Add a crossing guard at the intersecting of Division Street and Elm Street to make it safer for students walking and bicycling to and from Shattuck Middle School and St. Margaret Mary's School.

Equity

1. Shattuck Middle School ranked in the medium priority category of the Equity Analysis. Please reference the equity analysis on page 6 to learn more information.

**Current Event and Program
Participation**



Shattuck Middle School

Bicycle & Walk Audit

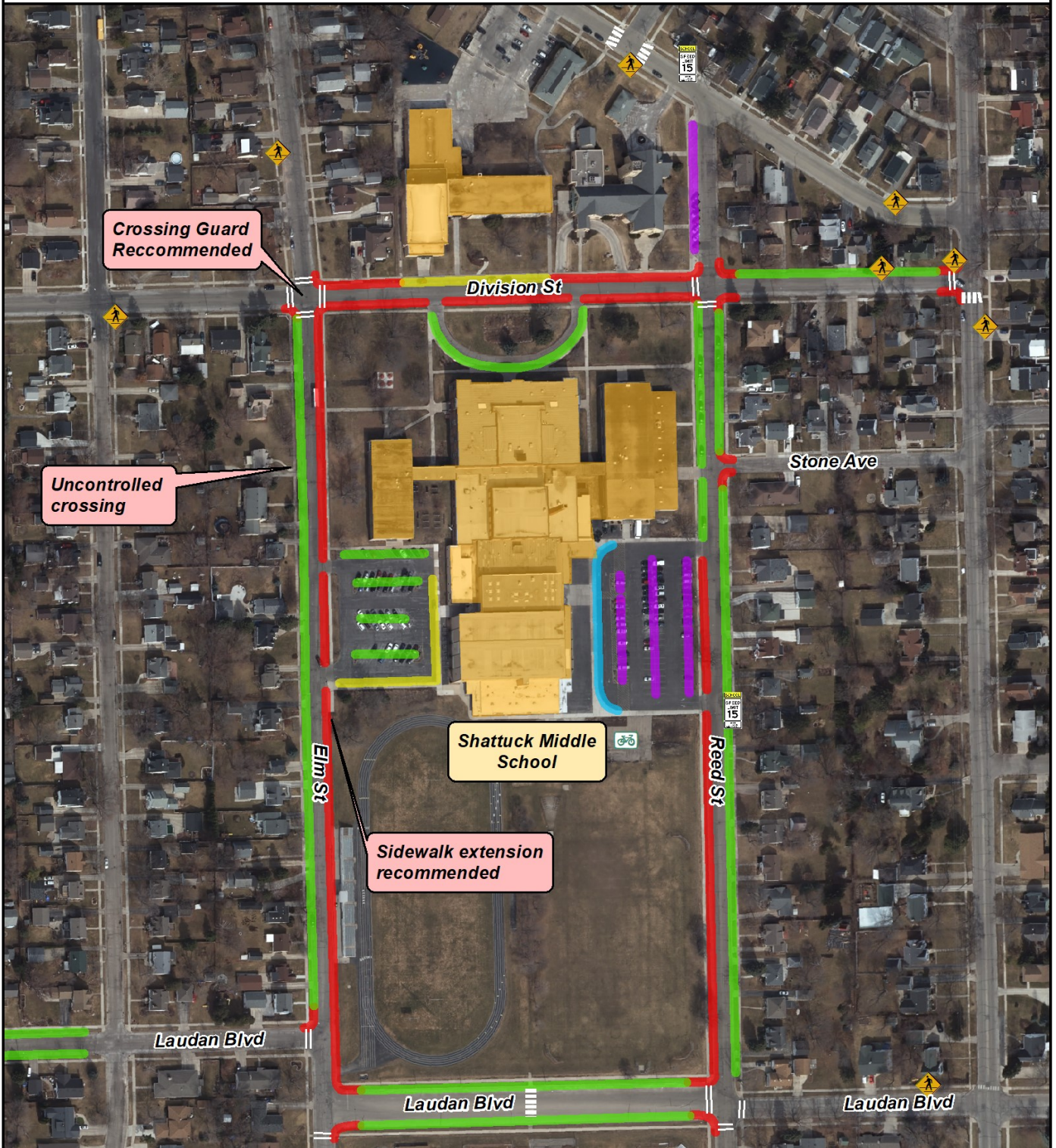
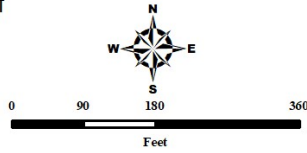
Legend

- | | | | |
|---|------------------|---|---------------------------|
|  | Crossing Guard |  | Parent Pick Up & Drop Off |
|  | Pedestrian Sign |  | Bus Loading Zone |
|  | School Zone Sign |  | General Parking |
|  | Bike Rack |  | Staff Parking |
| | |  | No Parking |

Source:
Base data provided by Winnebago County 2015.
SRTS data provided by ECWRPC 2019.

This data was created for use by the East Central Wisconsin Regional Planning Commission Geographic Information System. Any other use application of this information is the responsibility of the user and such use/application is at their own risk. East Central Wisconsin Regional Planning Commission disclaims all liability regarding fitness of the information for any use other than for East Central Wisconsin Regional Planning Commission business.

PREPARED MARCH 2020 BY:



Spring Road Elementary School Action Plan

Education & Encouragement

1. Participate in Walk to School Day, Winter Walk to School Month, Bike to School Day to encourage students to walk and bicycle to school.
2. Participate in the Walking School Bus program to encourage students to walk to school and/or the Frequent Walker program to encourage students to walk at school.
3. Encourage parents to use the sidewalk on the east side of the parking lot compared to walking through the designated pick-up and drop-off zone to reduce conflict points between drivers and pedestrians.
4. Participate in Safe Routes to School educational campaigns to educate parents and community members about safe driving, walking, and biking at school and in the community.

Engineering

1. Extend the sidewalk on the east side of Spring Road Drive to provide a safer walking route for students walking to and from school.

Enforcement

1. Enforce stopping before the crosswalk at the intersection of Winchester Road and Spring Road Drive to make it safer for students walking in the crosswalk.

Equity

1. Spring Road Elementary School ranked in the medium priority category of the Equity Analysis. Please reference the equity analysis on page 6 to learn more information.

Current Event and Program Participation

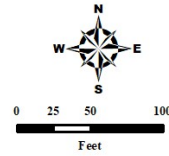


Spring Road Elementary School

Bicycle & Walk Audit

Legend

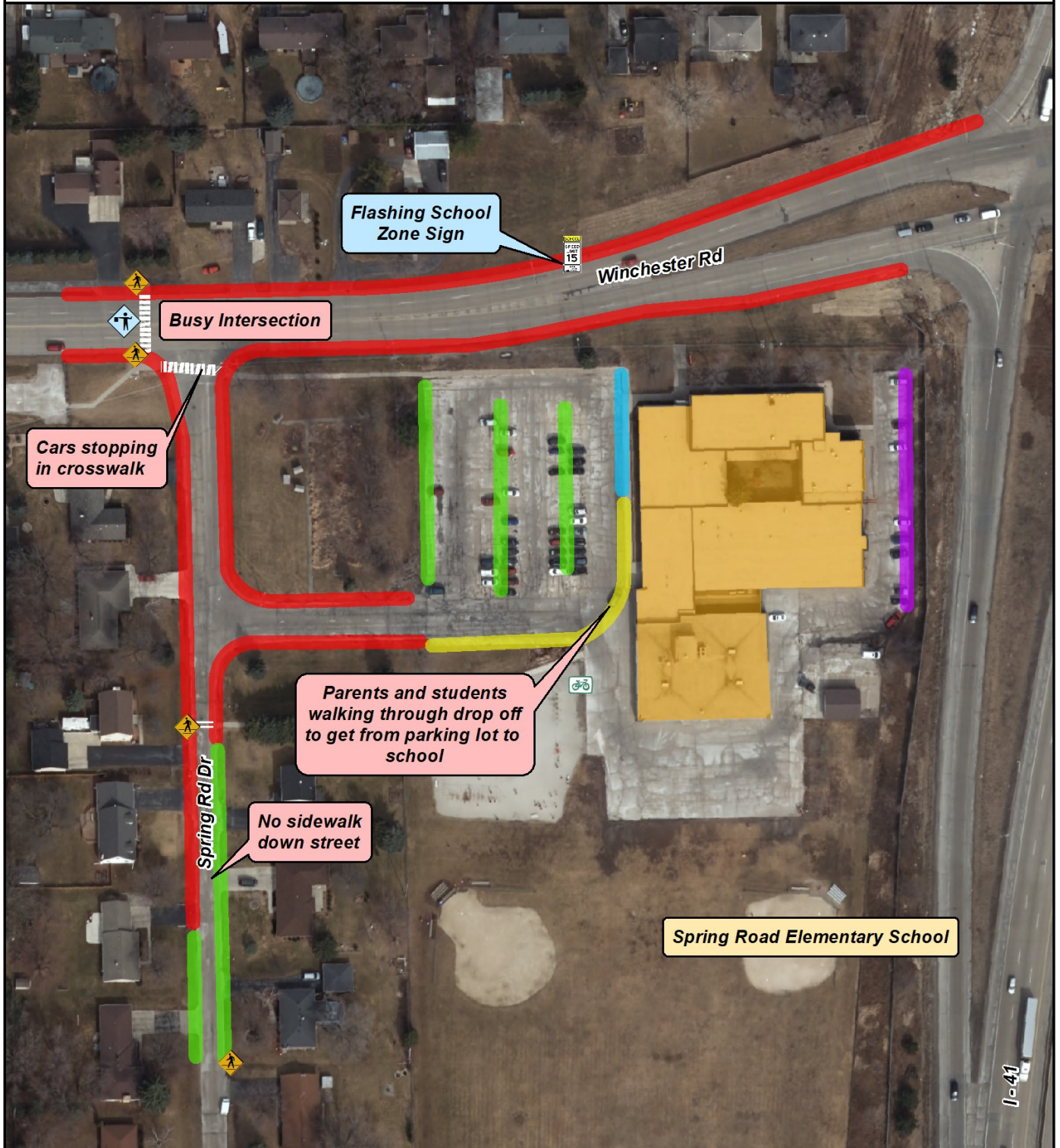
-  Crossing Guard
-  Pedestrian Sign
-  School Zone Sign
-  Bike Rack
-  Loading Zone
-  Bus Loading Zone
-  General Parking
-  Staff Parking
-  No Parking



Source:
Base data provided by Winnebago County 2017.
SRTS data provided by ECWRPC 2019.

This data was created for use by the East Central Wisconsin Regional Planning Commission Geographic Information System. Any other use/application of this information is the responsibility of the user and such use/application is at their own risk. East Central Wisconsin Regional Planning Commission disclaims all liability regarding fitness of the information for any use other than for East Central Wisconsin Regional Planning Commission business.

PREPARED MARCH 2020 BY:



Taft Elementary School Action Plan

Education & Encouragement

1. Participate in Walk to School Day, Winter Walk to School Month, and Bike to School Day to encourage students to walk and bicycle to school.
2. Participate in the Walking School Bus program to encourage students to walk to school and/or the Frequent Walker program to encourage students to walk at school.
3. Participate in Safe Routes to School educational campaigns to educate parents and community members about safe driving, walking, and biking at school and in the community.

Engineering

1. Paint ladder style crosswalks on all crosswalks adjacent to the school to improve visibility of students walking in the crosswalks.

Enforcement

1. Enforce cars coming to a complete stop at the intersection of Geiger Street and Claire Avenue to make it safer for students walking in the crosswalk.
2. Enforce no parking on the west side of South Western Avenue.

Equity

1. Taft Elementary School ranked in the high priority category of the Equity Analysis. Please reference the equity analysis on pages 6 & 7 to learn more information about providing resources to this school to make walking and biking safer for students.

**Current Event and Program
Participation**

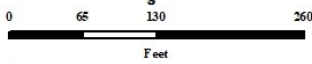
Not currently participating

Taft Elementary School

Bicycle & Walk Audit

Legend

-  Crossing Guard
-  Pedestrian Sign
-  School Zone Sign
-  Bike Rack
-  Parent Pick Up & Drop Off
-  Bus Loading Zone
-  General Parking
-  Staff Parking
-  No Parking



Source:
Base data provided by Wimebago County 2015.
SRTS data provided by ECWRPC 2019.

This data was created for use by the East Central Wisconsin Regional Planning Commission Geographic Information System. Any other use or application of this information is the responsibility of the user and such use applications is at their own risk. East Central Wisconsin Regional Planning Commission disclaims all liability regarding errors of the information for any use other than for East Central Wisconsin Regional Planning Commission business.

PREPARED OCTOBER 2019 BY:



Rapid Flashing Beacon

Taft Elementary School

Cars parking in no parking zone

Cars rolling through stop sign

Tullar Elementary School Action Plan

Education & Encouragement

1. Participate in Walk to School Day, Winter Walk to School Month, and Bike to School Day to encourage students to walk and bicycle to school.
2. Participate in the Walking School Bus program to encourage students to walk to school and/or the Frequent Walker program to encourage students to walk at school.
3. Participate in Safe Routes to School educational campaigns to educate parents and community members about safe driving, walking, and biking at school and in the community.

Engineering

1. Work with the City of Neenah to evaluate traffic flow on Tullar Road due to traffic congestion and speeds. Specifically review the intersection of West Cecil Street and Tullar Road.

Enforcement

1. Enforce the school zone speed limit on Tullar Road to make it safer for students walking and bicycling.

Equity

1. Tullar Elementary School ranked in the low priority category of the Equity Analysis. Please reference the equity analysis on page 6 to learn more information.

**Current Event and
Program Participation**

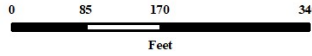
Not currently participating

Tullar Elementary School

Bicycle & Walk Audit

Legend

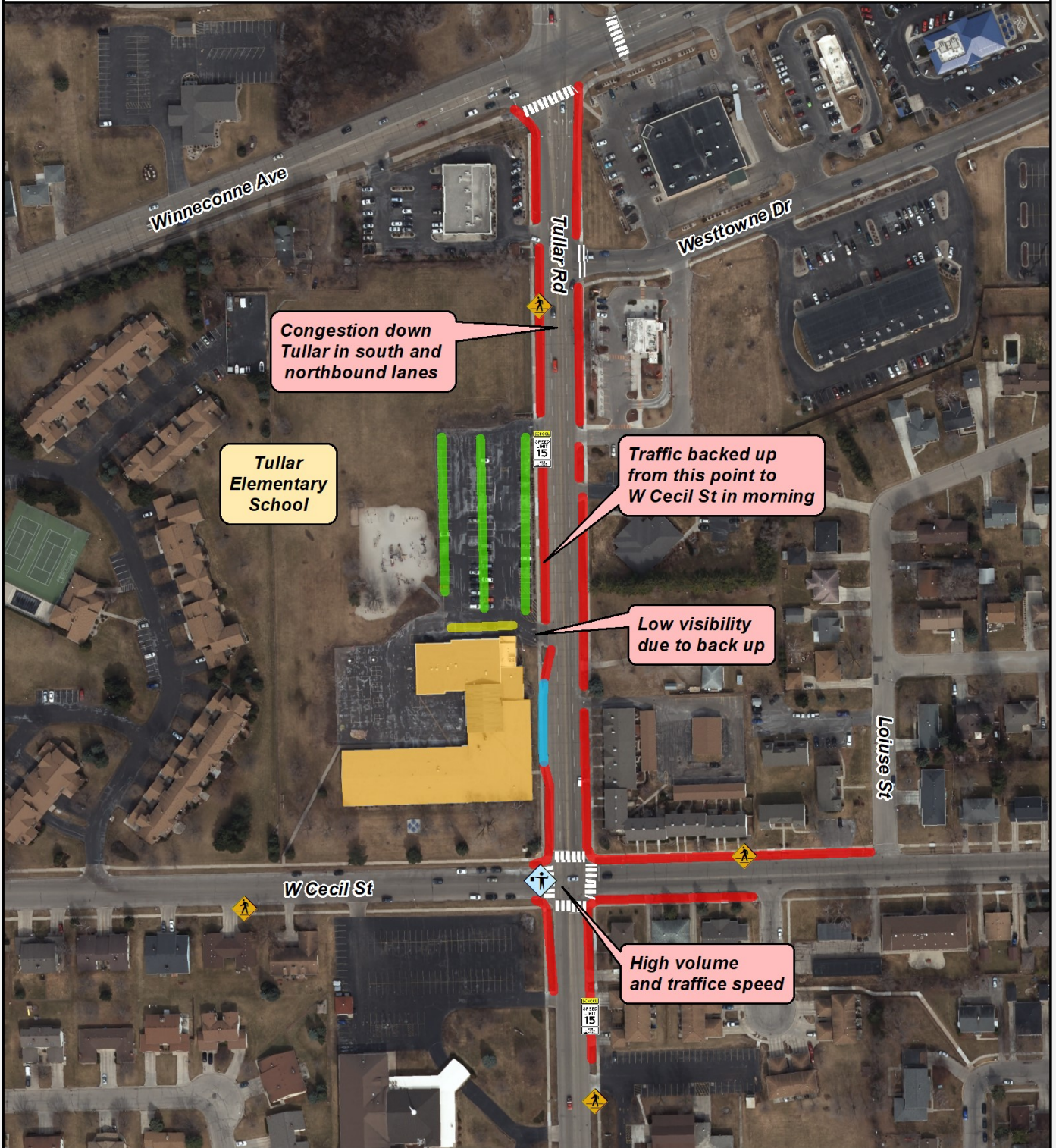
- | | | | |
|---|------------------|---|---------------------------|
|  | Crossing Guard |  | Parent Pick Up & Drop Off |
|  | Pedestrian Sign |  | Bus Loading Zone |
|  | School Zone Sign |  | General Parking |
|  | Bike Rack |  | Staff Parking |
| | |  | No Parking |



Source:
Base data provided by Winnebago County 2015.
SRTS data provided by ECRPC 2019.

This data was created for use by the East Central Wisconsin Regional Planning Commission Geographic Information System. Any other use/application of this information is the responsibility of the user and such use/application is at their own risk. East Central Wisconsin Regional Planning Commission disclaims all liability regarding fitness of the information for any use other than for East Central Wisconsin Regional Planning Commission business.

PREPARED JANUARY 2020 BY:



Wilson Elementary School Action Plan

Education & Encouragement

1. Participate in Walk to School Day, Winter Walk to School Month, and Bike to School Day to encourage students to walk and bicycle to school.
2. Participate in the Walking School Bus program to encourage students to walk to school and/or the Frequent Walker program to encourage students to walk at school. The Walking School Bus could start at Douglas Park.
3. Participate in Safe Routes to School educational campaigns to educate parents and community members about safe driving, walking, and biking at school and in the community.

Engineering

1. Work with the City of Neenah to evaluate the turn radius on the south side of Laudan Boulevard at the intersection of Laudan Boulevard and Higgins Avenue to make it safer for students walking in the crosswalk.
2. Work with the City of Neenah to paint ladder style crosswalks, make the curb cuts ADA accessible, and add traffic control to the intersection of Laudan Boulevard and Grove Street.

Equity

1. Wilson Elementary School ranked in the medium priority category of the Equity Analysis. Please reference the equity analysis on page 6 to learn more information.

**Current Event and Program
Participation**

Not currently participating

Wilson Elementary School

Bicycle & Walk Audit

Legend

- | | | | |
|---|------------------|---|---------------------------|
|  | Crossing Guard |  | Parent Pick Up & Drop Off |
|  | Pedestrian Sign |  | Bus Loading Zone |
|  | School Zone Sign |  | General Parking |
|  | Bike Rack |  | Staff Parking |
| | |  | No Parking |

Source:
Base data provided by Winnebago County 2015.
SRTS data provided by ECWRPC 2019.

This data was created for use by the East Central Wisconsin Regional Planning Commission Geographic Information System. Any other use/application of this information is the responsibility of the user and such use/application is at their own risk. East Central Wisconsin Regional Planning Commission disclaims all liability regarding fitness of the information for any use other than for East Central Wisconsin Regional Planning Commission business.

PREPARED MARCH 2020 BY:

