



# Hortonville Area School District

Safe Routes to School Action Plan

**DRAFT**

# *Abstract*

TITLE: Hortonville School District Safe Routes to School Action Plan

CONTACT: Melissa Kraemer-Badtke

AUTHORS: Ashley Tracy, Planner – Safe Routes to School  
Hannah Keckeisen, Planner - Safe Routes to School  
Melissa Kraemer Badtke, Principal Transportation Planner

SUBJECT: Safe Routes to School Action Plan

DATE: July 2020

PLANNING AGENCY: East Central Wisconsin Regional Planning Commission  
400 Ahnaip Street, Suite 100  
Menasha, WI 54952  
[www.ecwrpc.org](http://www.ecwrpc.org)

This Safe Routes to School Action Plan describes the existing conditions around schools within the Hortonville School District. The seven (7) schools included within this action plan are Greenville Middle School, Greenville Elementary School, Hortonville Middle School, Hortonville Elementary School, North Greenville Elementary School, Immanuel Lutheran School, St. Mary's Catholic School. This action plan also includes future community improvements based on these conditions and information gathered by parents of students.

# *Table of Contents*

<b>The Six E's of Safe Routes to School .....</b>	<b>1</b>
<b>Safe Routes to School and Hortonville Area School District Background Information .....</b>	<b>2</b>
<b>Hortonville Area School District Boundary Map.....</b>	<b>3</b>
<b>Current Event and Program Participation .....</b>	<b>4</b>
<b>School District Equity Analysis.....</b>	<b>6</b>
<b>Bicycle &amp; Pedestrian Infrastructure Facilities Map .....</b>	<b>7</b>
<b>Bicycle &amp; Pedestrian Infrastructure Recommendations Village of Hortonville .....</b>	<b>9</b>
<b>Bicycle &amp; Pedestrian Infrastructure Recommendations Town of Greenville .....</b>	<b>11</b>
<b>School Educational &amp; Enforcement Recommendations</b>	
<b>Greenville Elementary School Action Plan .....</b>	<b>13</b>
<b>Greenville Middle School Action Plan .....</b>	<b>14</b>
<b>Hortonville Elementary School Action Plan.....</b>	<b>16</b>
<b>Hortonville Middle School Action Plan .....</b>	<b>17</b>
<b>North Greenville Elementary School Action Plan .....</b>	<b>19</b>
<b>Immanuel Lutheran School Action Plan .....</b>	<b>21</b>
<b>St. Mary's Catholic School Action Plan.....</b>	<b>23</b>

# The 6 E's of Safe Routes to School

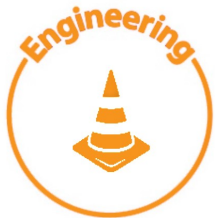
Comprehensive Safe Routes to School initiatives have been shown to be more effective at increasing physical activity and reducing injuries. The Regional Safe Routes to School program is based on these principals of the 6 E's.



**Education**— Providing students and the community with the skills to walk and bicycle safely, educating them about the benefits of walking and bicycling, and teaching them about the broad range of transportation choices.



**Encouragement**— Generating enthusiasm and increased walking and bicycling for students through events, activities, and programs.



**Engineering**— Creating physical improvements to streets and neighborhoods that make walking and bicycling safer, more comfortable, and more convenient.



**Enforcement**— Deterring unsafe traffic behaviors and encouraging safe habits by people walking, bicycling, and driving in school zones, school neighborhoods, and along school routes.



**Evaluation**— Assessing which approaches are more or less successful, ensuring that programs and initiatives are supporting equitable outcomes, and identifying unintended consequences or opportunities to improve the effectiveness of each approach. Events and programs will be evaluated on a regular basis.



**Equity**— Ensuring that Safe Routes to School initiatives are benefiting all demographic groups, with particular attention to ensuring safe, healthy, and fair outcomes for low-income students, students of color, students of all genders, students with disabilities, and others.

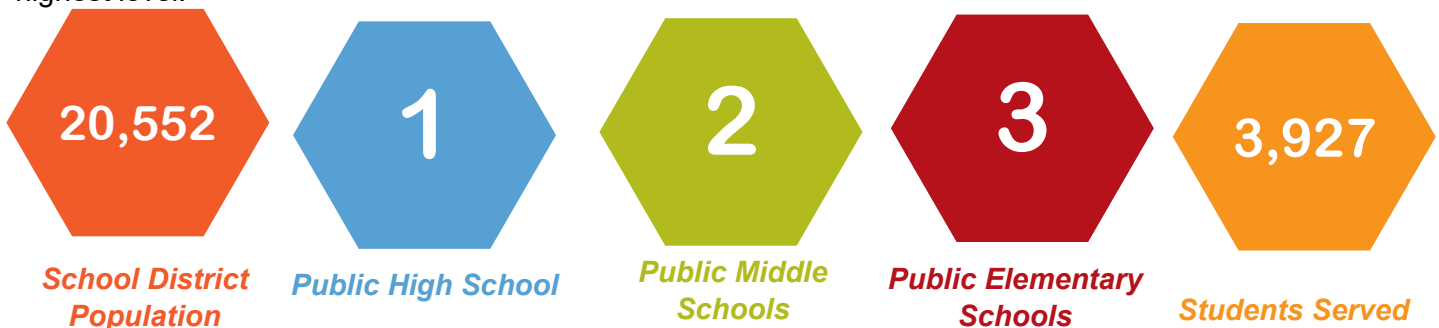
## Safe Routes to School Background Information

The East Central Wisconsin Regional Safe Routes to School (SRTS) Program focuses on engaging and empowering schools and communities to foster healthy lifestyles through environmental changes and safe walking and bicycling. By working to make it safer and more appealing for students in grades K-8 to walk and bike to school, the Regional SRTS Program is continually making strides to improve childhood health, reduce traffic congestion and pollution, and create more livable communities.

## Hortonville School District Background Information

This Action Plan identifies current transportation behaviors within the Hortonville School District. It lists known walking, bicycling, and driving barriers, and it identifies potential engineering and programmatic strategies to address those barriers. This Action Plan is available for use by the Village of Hortonville, Town of Greenville, portions of the Town of Liberty, Town of Center, Town of Dale, Town of Hortonia, Town of Ellington, and portions Town of Grand Chute parents, students, and community members to guide the communities work on Safe Routes to School.

The Hortonville School District has a total enrollment of 3,927 students from Kindergarten through Grade 12. Hortonville exceeds school expectations on the State Accountability Report card for the 2018-2019 school year. The Mission for the Hortonville School District is: our community ensures every student learns at the highest level.



## Hortonville School District Transportation Policies

A. Public Students - Students who attend public schools are eligible for transportation if these conditions are met: 1. The student's place of residence is within the school district along with the schools attendance boundary 2. Students must live two (2) or more miles from the school they attend, or if less than two (2) miles they must live within an area declared unusually hazardous for walking as determined by the Board of Education.

B. Private Students - Students who attend private schools are eligible for transportation if all these conditions are met: 1. The private school attended is located in the District or within five (5) miles of District boundaries. Wisconsin Statute 121.54(2)(b) 2. The private school attended has established an attendance area as prescribed by Wisconsin Statutes Sec. 121.54(4) 3. The student's place of residence is included in the attendance area. 4. Students must live two (2) or more miles from the school they attend, or if less than two miles they must live within an area declared unusually hazardous for walking as determined by the Board of Education. To learn more information visit Hortonville School District's Transportation Policy:

<https://www.hasd.org/district/boardofeducation/policies/8000/8600%20Transportation1.pdf>



School Locations

# School District Boundaries and Locations

## Hortonville Area School District



Hortonville School District



Elementary School Boundaries

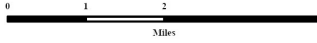
Middle School Boundaries



Hortonville Middle School

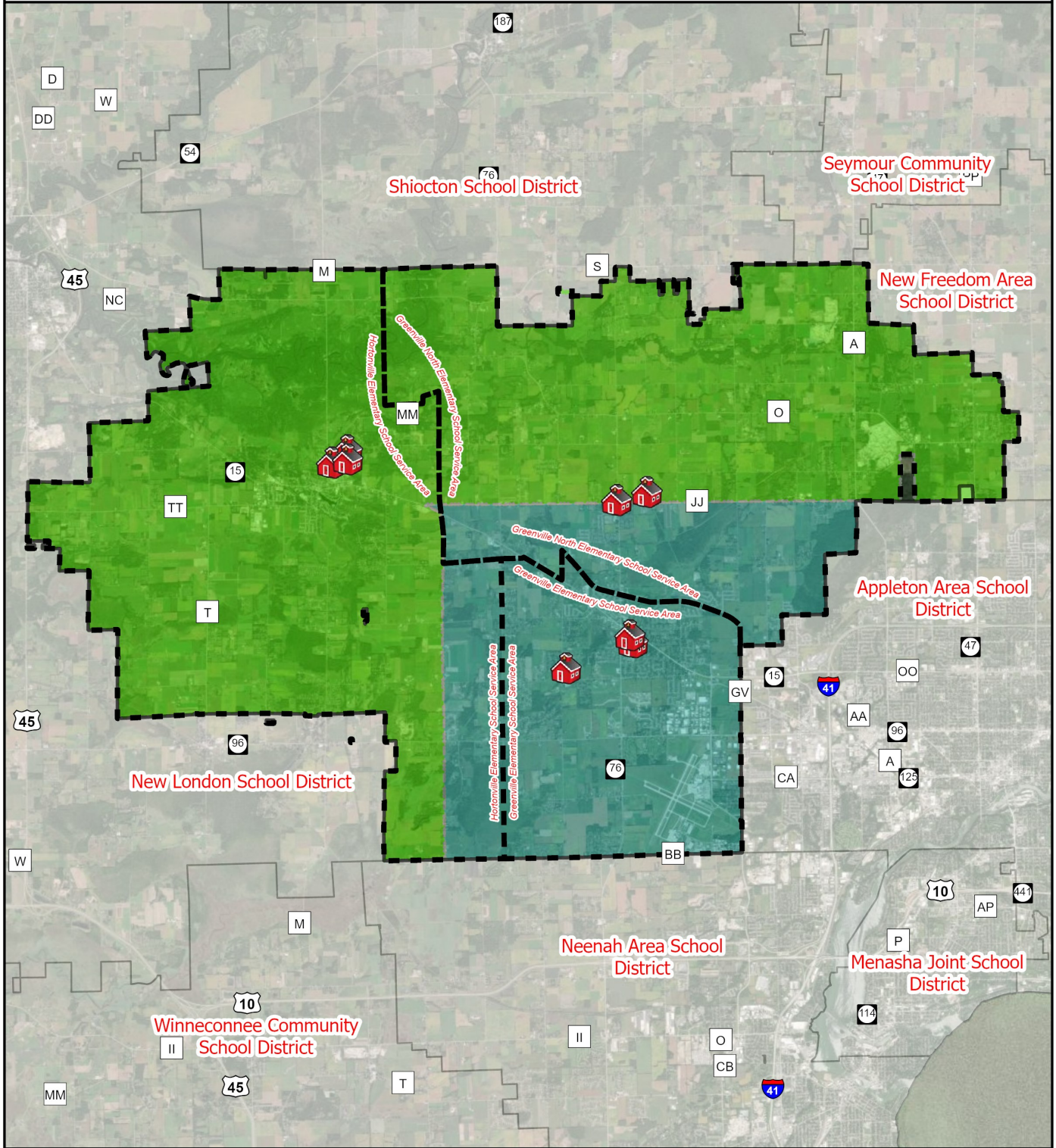


Greenville Middle School



Source:  
SRTS data provided by ECWRPC 2019.  
This data was created for use by the East Central Wisconsin Regional Planning Commission Geographic Information System. Any other use/application of this information is the responsibility of the user and such use/application is at their own risk. East Central Wisconsin Regional Planning Commission disclaims all liability regarding fitness of the information for any use other than for East Central Wisconsin Regional Planning Commission business.

PREPARED JUNE 2020 BY:



Path: P:\138x\_Regional\_SRTS\_GIS\_Mapping\Action\_Plans\Hortonville\_School\_District\2020\Hortonville\_School\_District.aprx  
Source: Esri, Maxar, GeoEye, Earthstar Geographics, CNES/Airbus DS, USDA, USGS, AeroGRID, IGN, and the GIS User Community

# Event and Program Participation

Hortonville School District	Events			Programs				2020
School Name	Walk to School Day	Winter Walk to School Month	Bike to School Day	Walking School Bus Program	Frequent Walker Program	Youth Engagement Program	Project RADAR Program	
Greenville Elementary School	X		X	X				
Greenville Middle School						X		
Hortonville Elementary School	X	X	X	X	X			
Hortonville Middle School								
North Greenville Elementary School								
Immanuel Lutheran School	X	X	X		X			
St. Mary's Catholic School	X	X	X					

# Event and Program Participation



**Walk to School Day**— A global event that involves communities from more than 40 countries walking and bicycling to school on the same day. This event occurs annually on the first Wednesday in October.



**Bike to School Day**— Focuses on increasing bicycle safety and encourages students to bicycle to school. Bike to School Day typically falls on the second Wednesday in May.



**Winter Walk to School Month**— Is held in February and promotes walking to school year-round, even during the cold Wisconsin Winters.



**Walking School Bus Program**— Is a group of children who walk to school together under the supervision of a trained route leader.



**Frequent Walker Program**— Is a walking at school program and it encourages students to walk before, during, and after school by making it fun and rewarding.



**Youth Engagement**— Empowers elementary and middle school students, leaders, teachers, and adult facilitators by providing knowledge and resources to help lead activities and events that support active transportation.



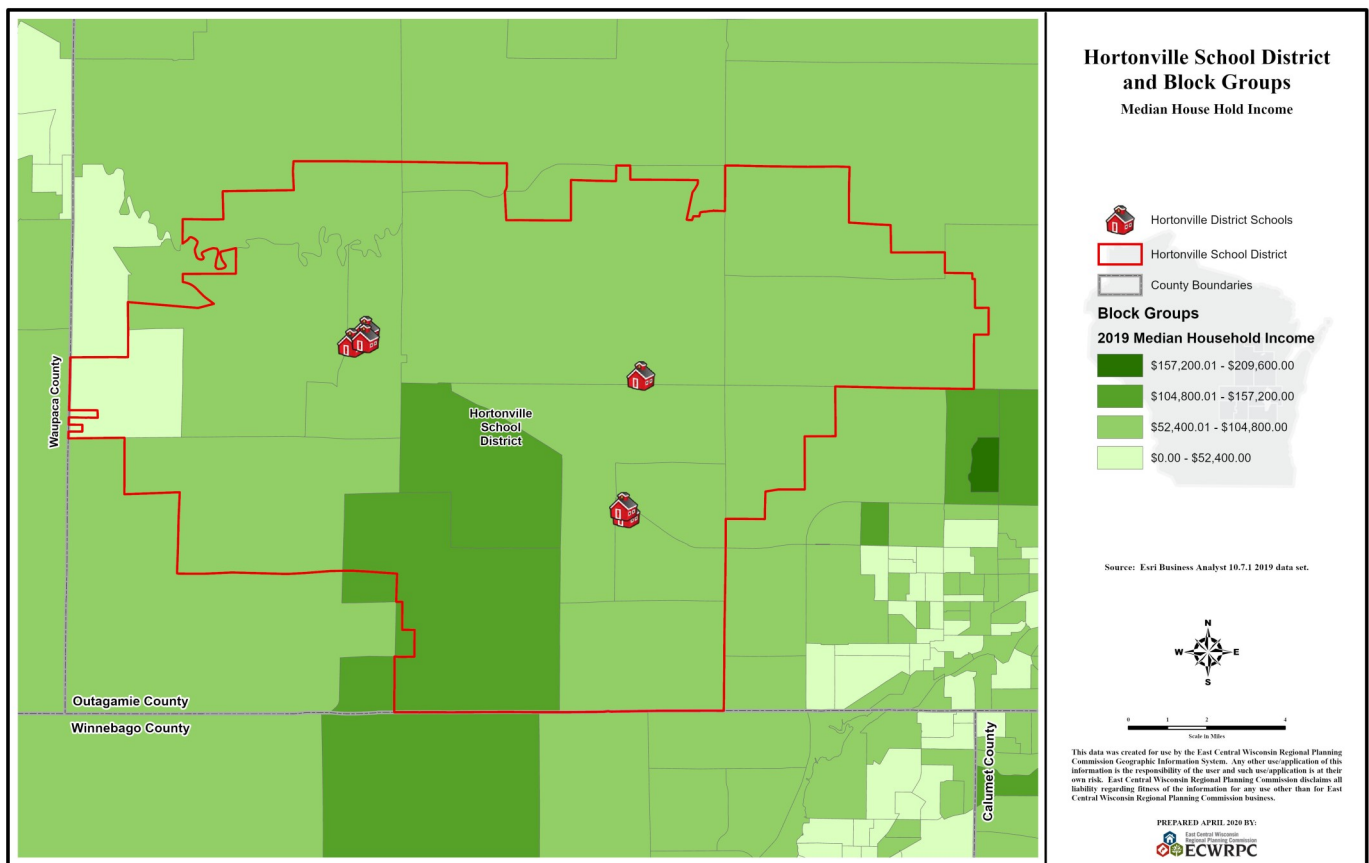
**Project RADAR**— Creates awareness about safe driving habits around school zones by developing educational materials utilizing radar velocity speed guns.



# Hortonville School District Equity Analysis

The Safe Routes to School Equity Analysis identifies school districts and block groups that would benefit from additional resources to promote safe walking and bicycling. A block group is a geographical unit used by the U.S. Census Bureau; it is the smallest geographical unit measured, and data is only collected from some of the households.<sup>1</sup> Median household income data can be used to identify block groups where more children are walking and bicycling because we know that children from low-income families are twice as likely to walk to school as children from higher-income families and will face greater risks.<sup>2</sup> A low-income family is generally defined as one in which the family income is no more than twice the federal poverty limit. The 2020 poverty limit is \$26,200 for a family of four, which means a low-income family of four makes \$52,400 or less.<sup>3</sup>

Median household income was collected by block groups for the Hortonville Area School District and is displayed in the map below. The block group in the west corner of the school district is categorized as a low-income median household income. This area should be evaluated and provided resources as needed to ensure there are safe accessible routes for students to walk and bicycle to school. Parent surveys and student travel tallies can be utilized in these school district to learn more information about who is walking and bicycling to school and the safety concerns those students are experiencing. This information can be used to improve safety and provide an equitable walking and bicycling experience for students.



- <https://www2.census.gov/geo/pdfs/reference/GARM/Ch11GARM.pdf>
- <https://www.saferoutespartnership.org/sites/default/files/pdf/LowIncomeGuide.pdf>
- <https://aspe.hhs.gov/poverty-guidelines>



School Locations

Existing

Bike Lane

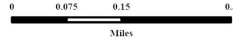
Trail

Sidewalk

# Bicycle & Pedestrian Network

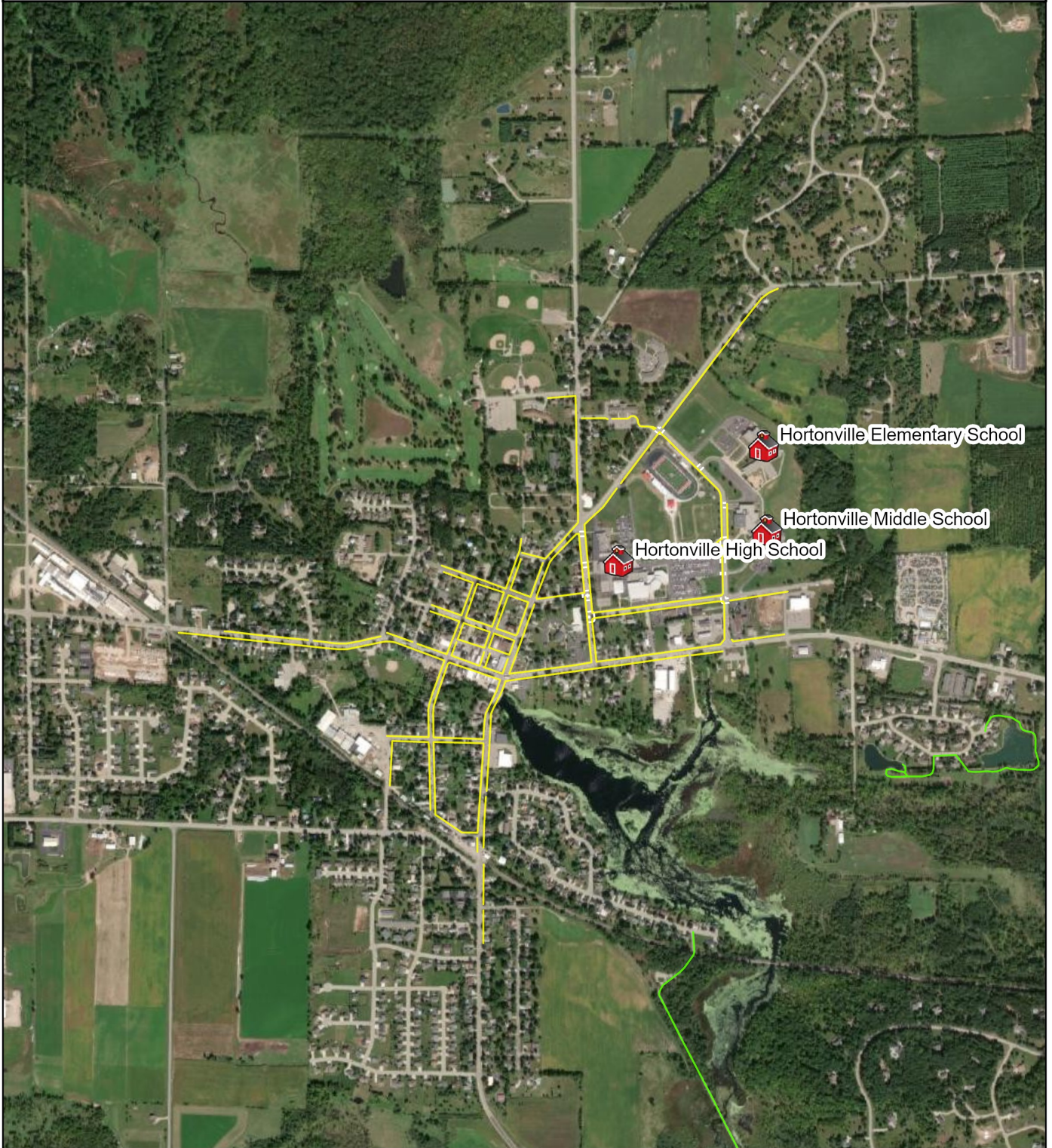
*Hortonville Area School District*

Village of Hortonville



Source:  
Bike and Pedestrian data by ECWRPC 2019.  
SRTS data provided by ECWRPC 2019.  
This data was created for use by the East Central Wisconsin  
Regional Planning Commission Geographic Information  
Systems. Any other use/application of this information is the  
responsibility of the user and such use/application is at their  
own risk. East Central Wisconsin Regional Planning  
Commission disclaims all liability regarding fitness of the  
information for any use other than for East Central Wisconsin  
Regional Planning Commission business.

PREPARED JUNE 2020 BY:



P:\138x\_Regional\_SRTS\_GIS\_Mapping\Action\_Plans\Hortonville\_School\_District\2020\Hortonville\_School\_District.aprx  
Source: Esri, Maxar, GeoEye, Earthstar Geographics, CNES/Airbus DS, USDA, USGS, AeroGRID, IGN, and the GIS User Community



School Locations

Existing

Bike Lane

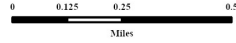
Trail

Sidewalk

# Bicycle & Pedestrian Network

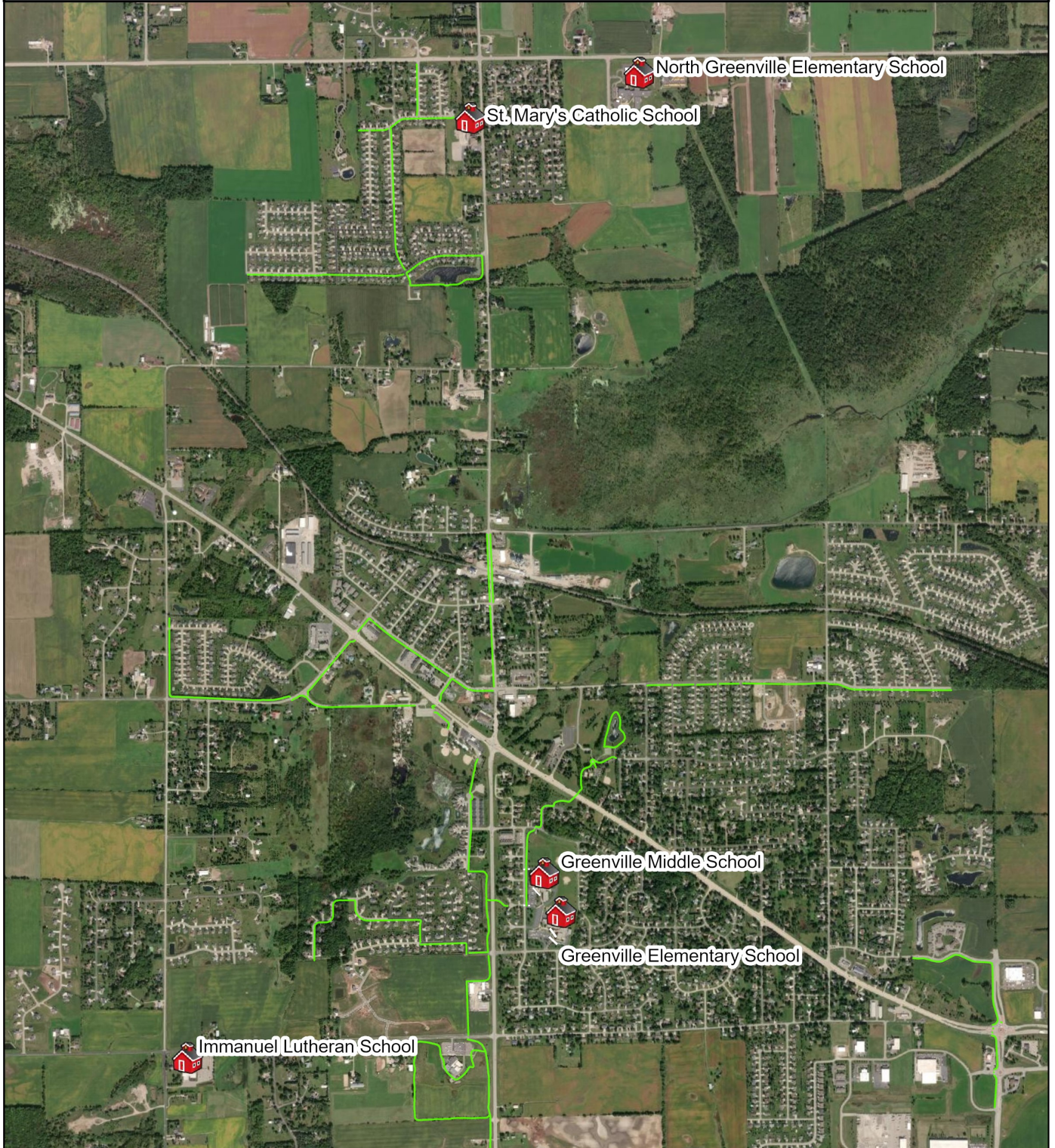
## Hortonville Area School District

### Town of Greenville



Source:  
Bike and Pedestrian data by ECWRPC 2019.  
SRTS data provided by ECWRPC 2019.  
This data was created for use by the East Central Wisconsin Regional Planning Commission Geographic Information System. Any other use application of this information is the responsibility of the user and such use application is at their own risk. East Central Wisconsin Regional Planning Commission disclaims all liability regarding fitness of the information for any use other than for East Central Wisconsin Regional Planning Commission business.

PREPARED JULY 2020 BY:



P:\1138x\_Regional\_SRTS\_GIS\_Mapping\Action\_Plans\Hortonville\_School\_District\2020\Hortonville\_School\_District.aprx

Source: Esri, Maxar, GeoEye, Earthstar Geographics, CNES/Airbus DS, USDA, USGS, AeroGRID, IGN, and the GIS User Community

# Bicycle & Pedestrian Recommendations





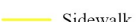
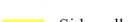
Village of Hortonville					
Road Name	From	To	Recommended Facility	Responsible Organization	Schools Impacted
N Cherry Street	W Cedar Street	W Main Street	Sidewalk	Village of Hortonville	Hortonville Elementary School, Hortonville Middle School, and Hortonville High School
Embarrass Street	N Cherry Street	Briggs Street	Continue sidewalk	Village of Hortonville	Hortonville Elementary School, Hortonville Middle School, and Hortonville High School
W Cedar Street	N Cherry Street	Briggs Street	Continue sidewalk	Village of Hortonville	Hortonville Elementary School, Hortonville Middle School, and Hortonville High School
Briggs Street	W Cedar Street	W Main Street	Sidewalk	Village of Hortonville	Hortonville Elementary School, Hortonville Middle School, and Hortonville High School
N Nash Street	Warner Street	N Olk Road	Continue sidewalk on both sides	Village of Hortonville	Hortonville Elementary School, Hortonville Middle School, and Hortonville High School
E Main Street	Warner Street	S Lake Street	Sidewalk	Village of Hortonville and Outagamie County	Hortonville Elementary School, Hortonville Middle School, and Hortonville High School

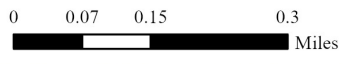
-  School Locations
-  Pedestrian Sign
-  School Zone Sign

# Bicycle & Pedestrian Facility Recommendations

*Hortonville Area School District*  
Village of Hortonville

Source:  
Bike and Pedestrian data by ECWRPC 2019.  
SRTS data provided by ECWRPC 2019.  
This data was created for use by the East Central Wisconsin Regional Planning Commission Geographic Information System. Any other use applications of this information is the responsibility of the user and such use application is at their own risk. East Central Wisconsin Regional Planning Commission disclaims all liability regarding fitness of the information for any use other than for East Central Wisconsin Regional Planning Commission business.

- | Existing  | Recommendations   |
|---|---|
|  Bike Lane |  Bike Lane |
|  Trail     |  Trail     |
|  Sidewalk  |  Sidewalk  |



PREPARED JUNE 2020 BY:



Default Geodatabase: P:\138x\_Regional\_SRTS\_GIS\_Mapping\Action\_Plans\Hortonville\_School\_District\2020\Hortonville\_bikeandped\_REC.gdb  
Source: Esri, Maxar, GeoEye, Earthstar Geographics, CNES/Airbus DS, USDA, USGS, AeroGRID, IGN, and the GIS User Community

# Bicycle & Pedestrian Recommendations

Town of Greenville					
Road Name	From	To	Recommended Facility	Responsible Organization	Schools Impacted
Greenridge Drive	State Road 76	Fairwinds Drive	Sidewalk	Town of Greenville	Greenville Middle School and Greenville Elementary School
Fawn Fidge Drive	Middle School Parking Lot	Greenridge Drive	Continuation of trail	Town of Greenville	Greenville Middle School and Greenville Elementary School
Sunnyvale Lane	State Road 76	Appletree Court	Sidewalk	Town of Greenville	Greenville Middle School and Greenville Elementary School
Sunnyvale Lane	Appletree Court	Fairwinds Drive	Continuation of trail	Town of Greenville	Greenville Middle School and Greenville Elementary School
Fairwinds Drive	Sunnyvale Lane	Greenridge Drive	Continuation of trail	Town of Greenville	Greenville Middle School and Greenville Elementary School



School Locations



Pedestrian Sign



School Zone Sign

Existing

Bike Lane

Trail

Sidewalk

Recommendations

Bike Lane

Trail

Sidewalk

# Bicycle & Pedestrian Facility Recommendations

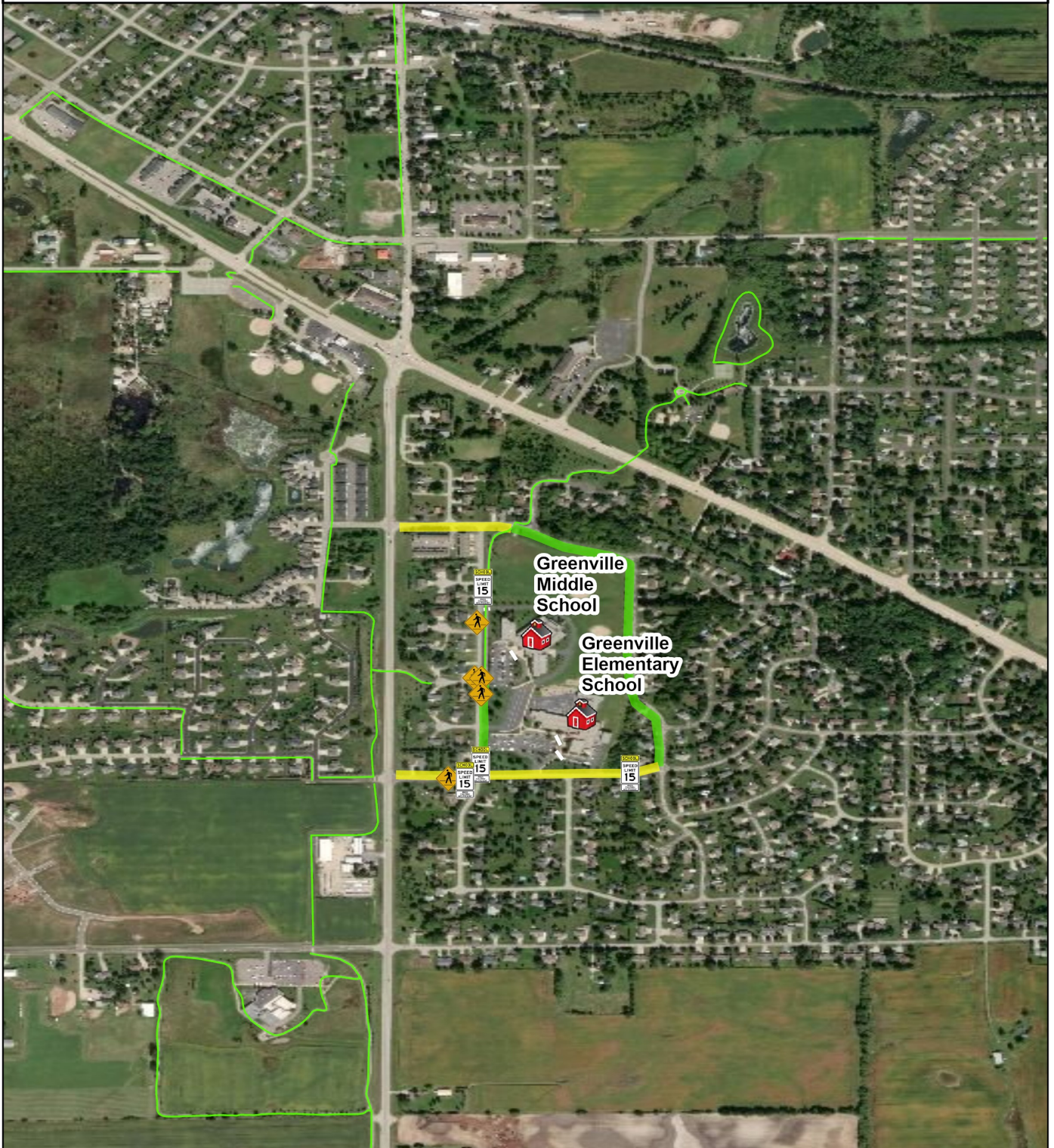
## Hortonville Area School District Town of Greenville



0 0.07 0.15 0.3  
Miles

Source:  
Bike and Pedestrian data by ECWRPC 2019.  
SRTS data provided by ECWRPC 2019.  
This data was created for use by the East Central Wisconsin  
Regional Planning Commission Geographic Information  
System. Any other use/application of this information is the  
responsibility of the user and such use/application is at their  
own risk. East Central Wisconsin Regional Planning  
Commission disclaims all liability regarding fitness of the  
information for any use other than for East Central Wisconsin  
Regional Planning Commission business.

PREPARED JUNE 2020 BY:



# Greenville Elementary School Action Plan

## Education & Encouragement

1. Participate in Walk to School Day, Winter Walk to School Month, and Bike to School Day events to encourage students to walk and bicycle to school.
2. Participate in the Frequent Walker program to encourage students to walk at school and the Walking School Bus program to walk to school.
3. Participate in Project RADAR to educate students and community members about driving safe and slowing down in school zones.
4. Educate parents on pick-up and drop-off procedures using a parent letter and map. Encourage parents to continue moving forward in the loading zone and enforce no parking in the designated no parking zone.

## Engineering

1. Update the curb ramp at the entrance of the elementary school to be ADA compliant.
2. Expand the multi-use trail to reach the south end of the school campus for safer walking and biking conditions for students.

## Enforcement

1. Enforce school zone speed limit to make it safer for students walking and bicycling to school.

Current Event and Program Participation





# Greenville Middle School Action Plan

## ***Education & Encouragement***

1. Participate in Walk to School Day, Winter Walk to School Month, and Bike to School Day events to encourage students to walk and bicycle to school.
2. Participate in the Frequent Walker program to encourage students to walk at school and the Walking School Bus program to walk to school. If more children walk to school there will be less traffic congestion during pick-up and drop-off times.
3. Participate in Project RADAR to educate students and community members about driving safe and slowing down in school zones.
4. Educate parents on pick-up and drop-off procedures using a parent letter and map. Encourage parents to continue moving forward in the loading zone and enforce no parking in the designated no parking zone.

## ***Engineering***

1. Paint ladder style crosswalks at the intersection of Kimberly Court and Fawn Ridge Drive to improve visibility of students walking in the crosswalk.

## ***Enforcement***


1. Enforce no parking in handicap parking stalls unless you are eligible to park there.
2. Educate and encourage parents to yield to pedestrians in the crosswalks and enforce this law to make it safer for children walking to and from school.
3. Enforce cars pulling all the way forward in the parking lot to decrease back ups.

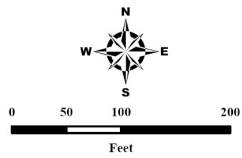
**Current Event and Program  
Participation**



# Greenville Elementary and Middle Schools

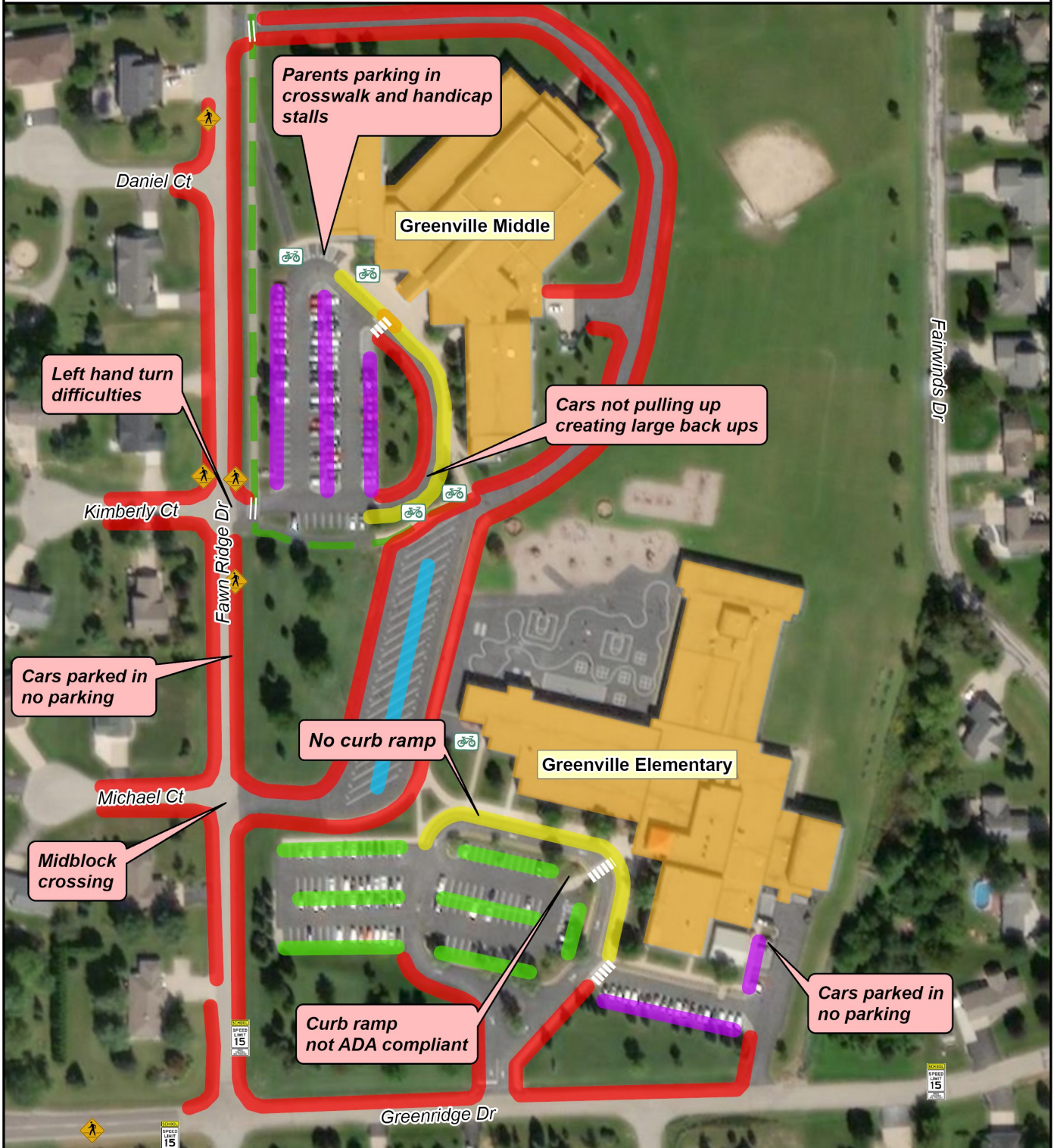
## Bicycle & Walk Audit

-  Crossing Guard
-  Pedestrian Sign
-  School Zone Sign
-  Bike Rack
-  Multi-Use Trail
-  Loading Zone
-  Bus Loading Zone
-  General Parking
-  Staff Parking
-  No Parking



Source:  
SRTS data provided by ECRPC 2019.  
This data was created for use by the East Central Wisconsin Regional Planning Commission Geographic Information System. Any other use-application of this information is the responsibility of the user and such use-application is at their own risk. East Central Wisconsin Regional Planning Commission disclaims all liability regarding fitness of the information for any use other than for East Central Wisconsin Regional Planning Commission business.

PREPARED JUNE 2020 BY:



P:\138x\_Regional\_SRTS\_GIS\_Mapping\Bicycle\_Walk\_Audits\2020\Hortonville\_School\_District\Greenville2020.aprx  
Source: Esri, Maxar, GeoEye, Earthstar Geographics, CNES/Airbus DS, USDA, USGS, AeroGRID, IGN, and the GIS User Community

# Hortonville Elementary School Action Plan

## Education & Encouragement

1. Participate in Walk to School Day, Winter Walk to School Month, and Bike to School Day events to encourage students to walk and bicycle to school.
2. Participate in the Walking School Bus program to encourage students to walk to school and the Frequent Walker program to encourage students to walk at school .
3. Participate in Project RADAR to educate students and community members about driving safe and slowing down in school zones.
4. Participate in Safe Routes to School educational campaigns to educate parents and community members about safe driving, walking, and biking at school and in the community.

## Engineering

1. Install a curb cut at the crosswalk closest to the main school entrance to make it ADA compliant.
2. Update the curb cuts at the intersection of East Towne Drive and Warner Street to be ADA compliant. The curb cuts currently lead pedestrians into the middle of the intersection.
3. Update the curb cuts at the intersection of East Main Street and Warner Street to make them ADA compliant. The curb cuts currently lead pedestrians into the middle of the intersection.
4. Paint ladder style crosswalks for all crosswalks within and adjacent to the school campus to improve visibility of students walking and bicycling to school.

## Enforcement

1. Enforce the school zone speed limit on North Oak Street and North Nash Street to make it safer for students walking and bicycling to and from school.
2. Enforce the no parking in the loading zone in the front drop-off circle to prevent congestion and to keep traffic flowing.

**Current Event and  
Program Participa-**



# Hortonville Middle School Action Plan

## Education & Encouragement

1. Participate in Walk to School Day, Winter Walk to School Month, and Bike to School Day events to encourage students to walk and bicycle to school.
2. Participate in Project RADAR to educate students and community members about driving safe and slowing down in school zones.

## Engineering

1. Update the curb cuts at the intersection of East Towne Drive and Warner Street to make them ADA compliant. The curb cuts currently lead pedestrians into the middle of the intersection.
2. Update the curb cuts on the south driveway of the high school to be ADA compliant. The ramp currently directs pedestrians into the middle of the road and is at a steep angle.
3. Paint ladder style crosswalks for all crosswalks within and adjacent to the school campus to improve visibility of students walking and bicycling to school.
4. Update the stop sign at the north driveway of the Middle School because it is not currently Manual on Uniform Traffic Control Devices (MUTCD) compliant.

## Enforcement

1. Enforce the school zone speed limit on North Oak Street and North Nash Street to make it safer for students walking and bicycling to and from school.

**Current Event and Program  
Participation**



# Hortonville Elementary, Middle, and High Schools

## Bicycle & Walk Audit

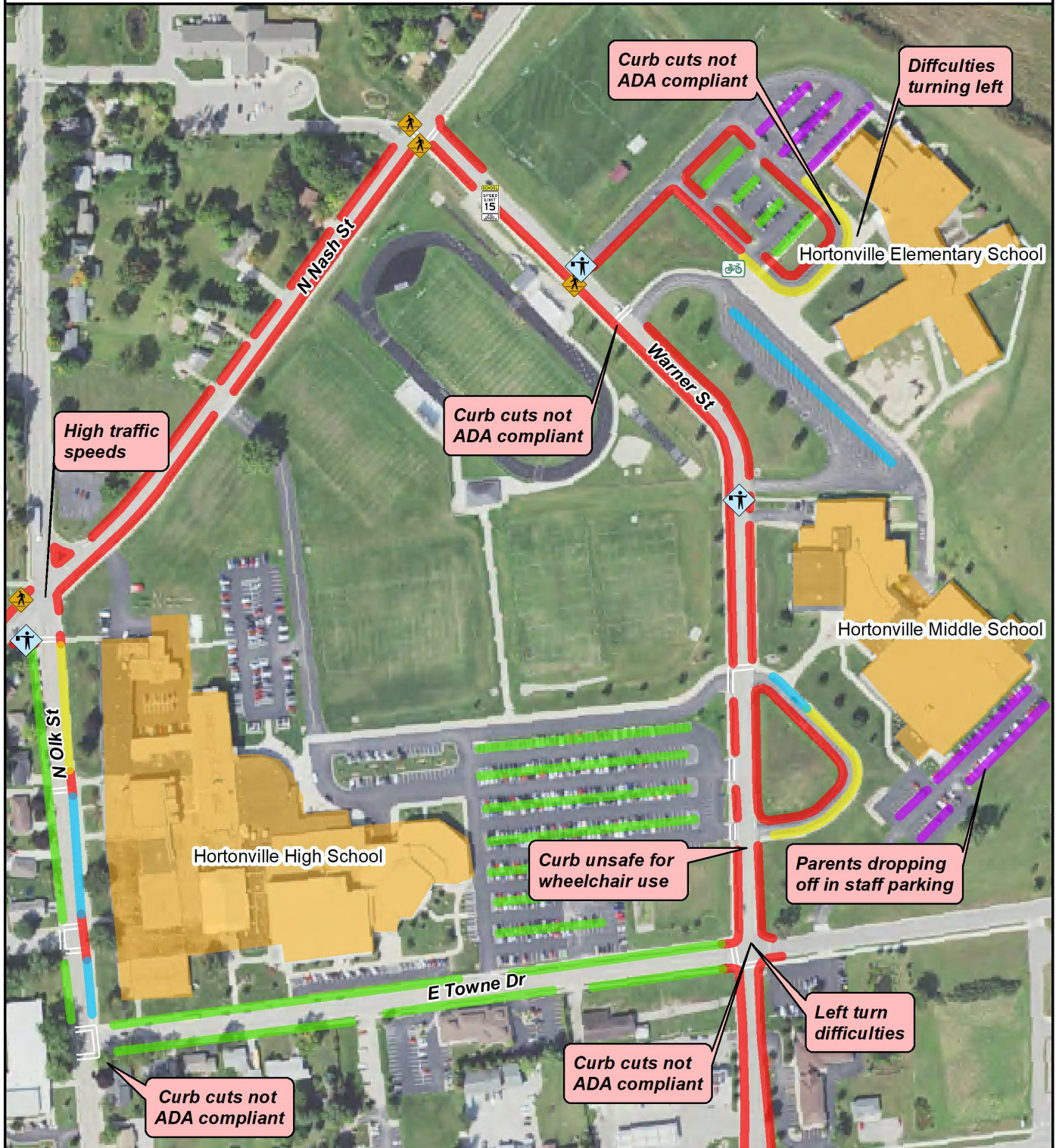
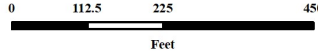
Source:  
Base data provided by Winnebago County 2015.  
SRTS data provided by ECWRPC 2019.

This data was created for use by the East Central Wisconsin Regional Planning Commission Geographic Information System. Any other use/application of this information is the responsibility of the user and such use/application is at their own risk. East Central Wisconsin Regional Planning Commission disclaims all liability regarding fitness of the information for any use other than for East Central Wisconsin Regional Planning Commission business.

PREPARED MAY 2020 BY:



- Crossing Guard
- Pedestrian Sign
- School Zone Sign
- Bike Rack
- Parent Pick Up & Drop Off
- Bus Loading Zone
- General Parking
- Staff Parking
- No Parking



# North Greenville Elementary School Action Plan

## Education & Encouragement

1. Participate in Walk to School Day, Winter Walk to School Month, and Bike to School Day events to encourage students to walk and bicycle to school. If it is unsafe for students to walk to school you could host walking and bicycling at school events.
2. Participate in the Frequent Walker program to encourage students to walk at school.
3. Participate in Safe Routes to School educational campaigns to educate parents and community members about safe driving, walking, and biking at school and in the community.
4. Encourage the bus drivers to release all of the students off the buses at the same time to make the students walking into school and the bus traffic more predictable.

## Engineering

1. Add school zone speed limit signs on Highway JJ to slow down traffic speeds making it safer for students.
2. Work with the Town of Greenville for the potential of adding a trail along Highway JJ.

## Enforcement

1. Direct traffic on Learning Way to keep high traffic volume moving and prevent cars from being backed up on Highway JJ.

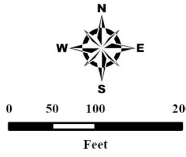
Current Event and Program  
Participation

**Not currently participating**

# North Greenville Elementary

## Bicycle & Walk Audit

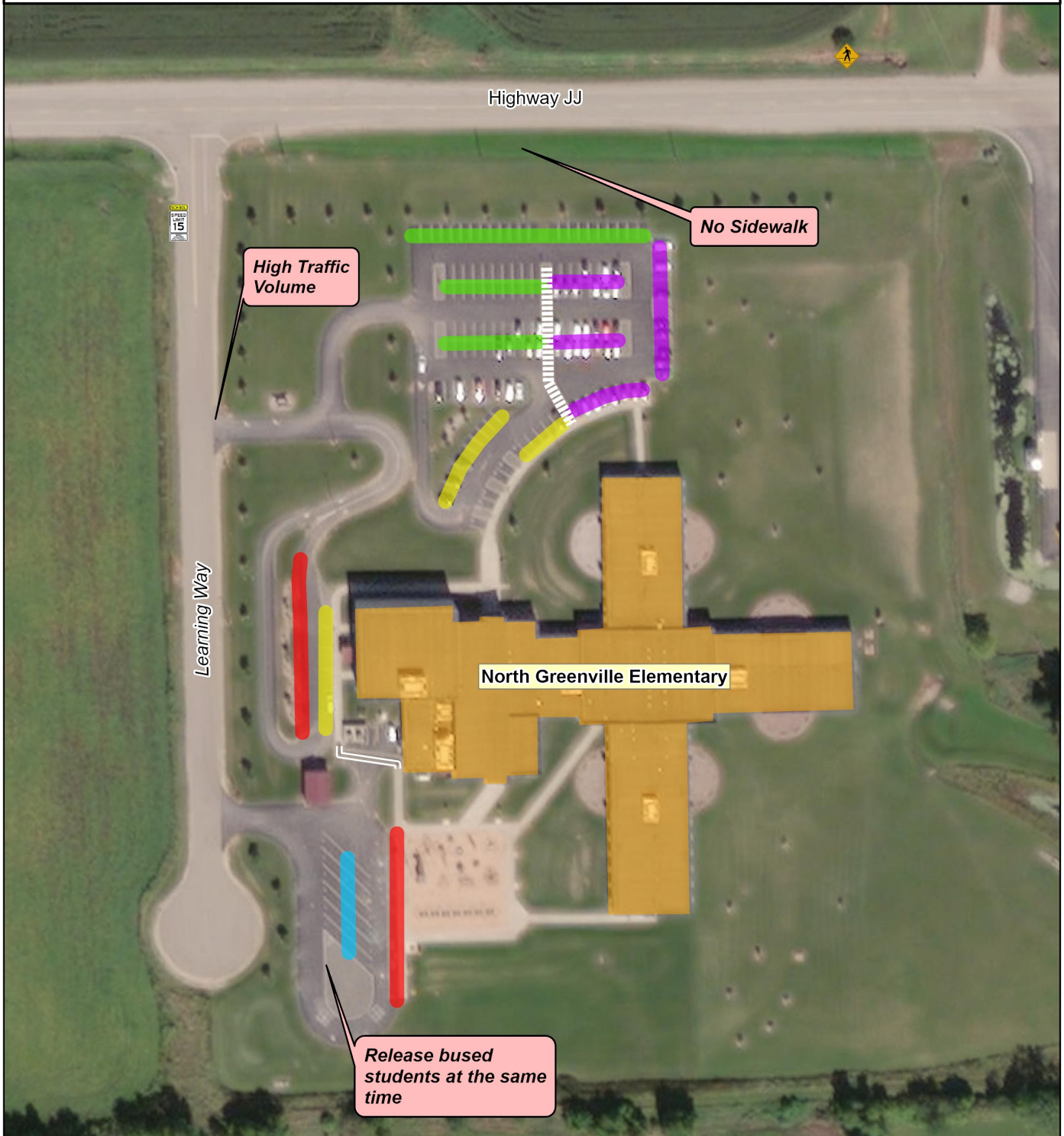
- |   |                  |   |                  |
|---|------------------|---|------------------|
|  | Pedestrian Sign  |  | Loading Zone     |
|  | School Zone Sign |  | Bus Loading Zone |
|  | Bike Rack        |  | General Parking  |
|   |                  |  | Staff Parking    |
|   |                  |  | No Parking       |



Source:  
SRTS data provided by ECWRPC 2019.

This data was created for use by the East Central Wisconsin Regional Planning Commission Geographic Information System. Any other use/application of this information is the responsibility of the user and such use/application is at their own risk. East Central Wisconsin Regional Planning Commission disclaims all liability regarding fitness of the information for any use other than for East Central Wisconsin Regional Planning Commission business.

PREPARED JULY 2020 BY:



P:\138x\_Regional\_SRTS\_GIS\_Mapping\Bicycle\_Walk\_Audits\2020\Hortonville\_School\_District\Greenville2020.aprx  
Source: Esri, Maxar, GeoEye, Earthstar Geographics, CNES/Airbus DS, USDA, USGS, AeroGRID, IGN, and the GIS User Community

# Immanuel Lutheran School Action Plan

## Education & Encouragement

1. Participate in Walk to School Day, Winter Walk to School Month, and Bike to School Day events to encourage students to walk and bicycle to school. If it is unsafe for students to walk to school you could host walking and bicycling at school events.
2. Participate in the Frequent Walker program to encourage students to walk at school.
3. Participate in Safe Routes to School educational campaigns to educate parents and community members about safe driving, walking, and biking at school and in the community.

## Engineering

1. Add school zone speed limit signs on Julius Drive and School Road to slow down traffic speeds making it safer for students.
2. Repaint the lines in the parking lot to improve visibility and improve traffic flow.

## Enforcement

1. Enforce the speed limit on Julius Drive and School Road.
2. Participate in Project RADAR along School Road/

Current Event and Program Participation





# Immanuel Lutheran

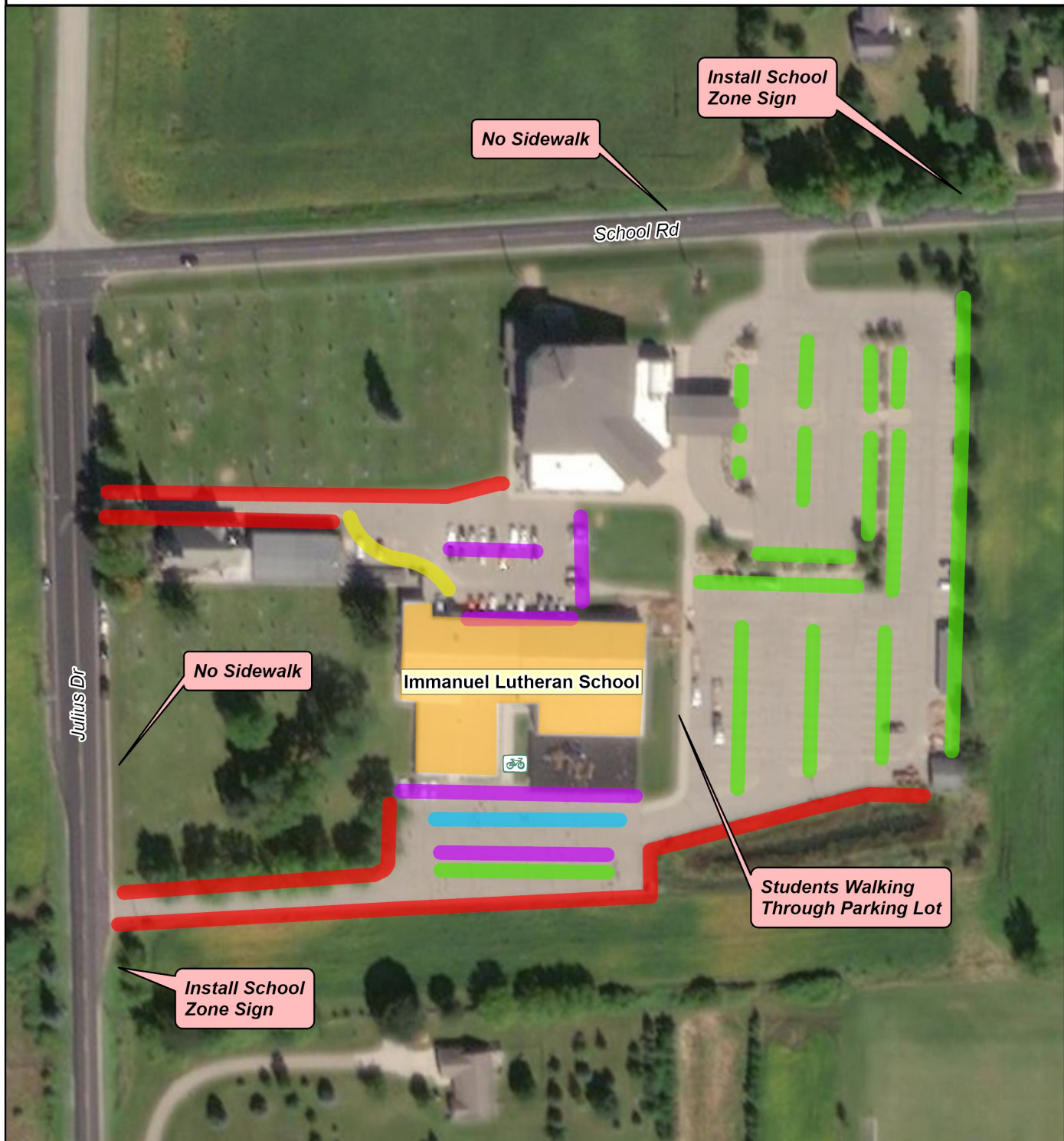
## Bicycle & Walk Audit

- |   |                  |   |                  |
|---|------------------|---|------------------|
|  | Safety Patrol    |  | Transit Stop     |
|  | Crossing Guard   |  | Loading Zone     |
|  | Pedestrian Sign  |  | Bus Loading Zone |
|  | School Zone Sign |  | General Parking  |
|  | Bike Rack        |  | Staff Parking    |
|   |                  |  | No Parking       |

Source:  
SRTS data provided by ECWRPC 2019.  
This data was created for use by the East Central Wisconsin Regional Planning Commission Geographic Information System. Any other use/application of this information is the responsibility of the user and such use/application is at their own risk. East Central Wisconsin Regional Planning Commission disclaims all liability regarding fitness of the information for any use other than for East Central Wisconsin Regional Planning Commission business.



PREPARED JUNE 2020 BY:



P:\1138x\_Regional\_SRTS\_GIS\_Mapping\Bicycle\_Walk\_Audits\2020\Hortonville\_School\_District\Greenville2020.aprx  
Source: Esri, Maxar, GeoEye, Earthstar Geographics, CNES/Airbus DS, USDA, USGS, AeroGRID, IGN, and the GIS User Community

# St. Mary's Catholic School Action Plan

## Education & Encouragement

1. Participate in Walk to School Day, Winter Walk to School Month, and Bike to School Day events to encourage students to walk and bicycle to school. If it is unsafe for students to walk to school you could host walking and bicycling at school events.
2. Participate in the Frequent Walker program to encourage students to walk at school.
3. Participate in Safe Routes to School educational campaigns to educate parents and community members about safe driving, walking, and biking at school and in the community.

## Engineering

1. Review the potential for adding sidewalks or a multi-use path along Municipal Drive.

## Enforcement

1. Participate in Project RADAR along Municipal Drive.

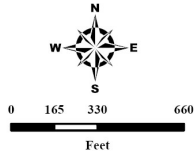
Current Event and Program Participation



# St. Mary's Catholic School

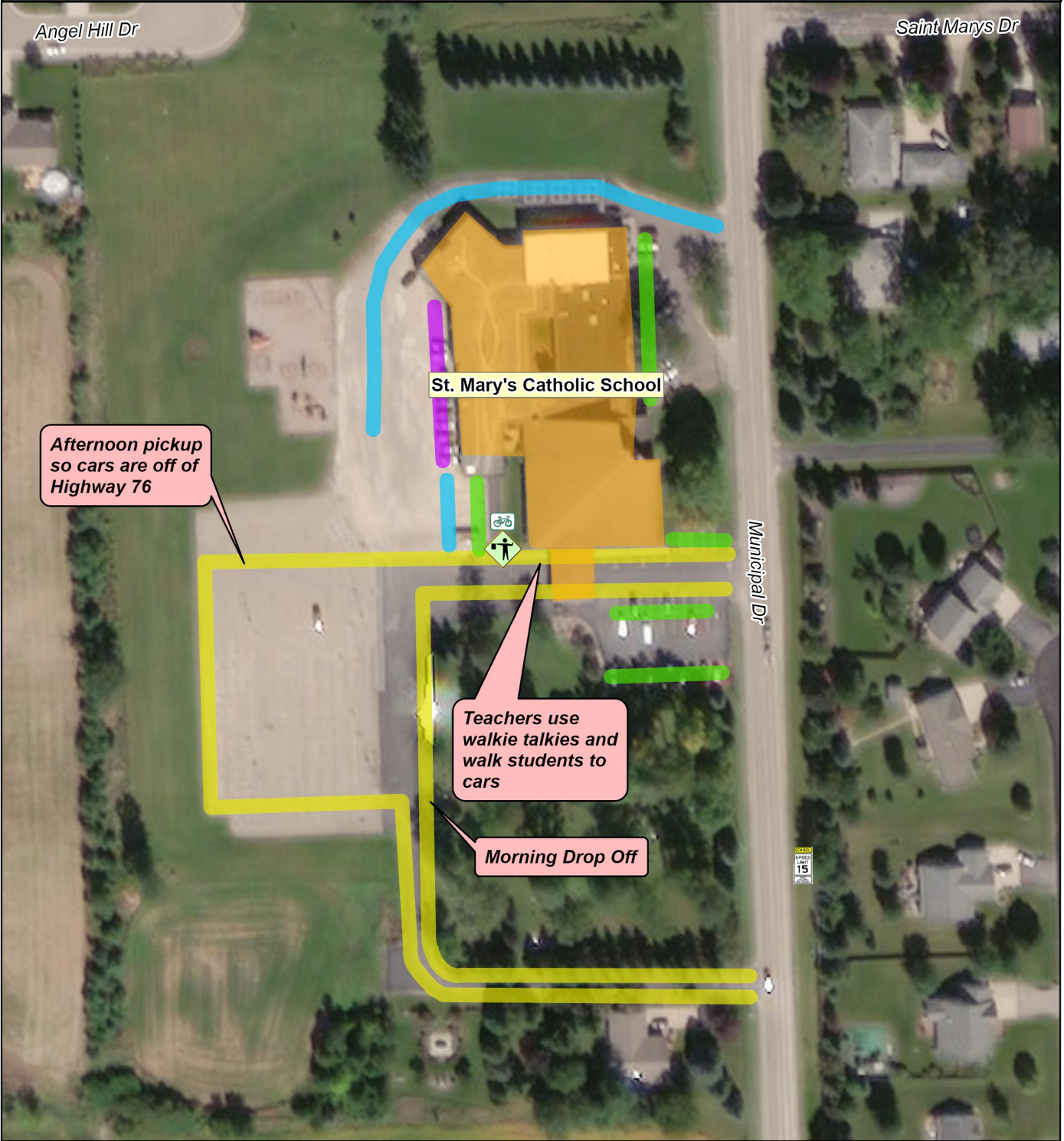
## Bicycle & Walk Audit

- |   |                  |   |                  |
|---|------------------|---|------------------|
|  | Safety Patrol    |  | Transit Stop     |
|  | Crossing Guard   |  | Loading Zone     |
|  | Pedestrian Sign  |  | Bus Loading Zone |
|  | School Zone Sign |  | General Parking  |
|  | Bike Rack        |  | Staff Parking    |
|   |                  |  | No Parking       |



Source:  
SRTS data provided by ECRPC 2019.  
This data was created for use by the East Central Wisconsin Regional Planning Commission Geographic Information System. Any other use/application of this information is the responsibility of the user and such use/application is at their own risk. East Central Wisconsin Regional Planning Commission disclaims all liability regarding fitness of the information for any use other than for East Central Wisconsin Regional Planning Commission business.

PREPARED JULY 2020 BY:  
East Central Wisconsin Regional Planning Commission  

P:\138x\_Regional\_SRTS\_GIS\_Mapping\Bicycle\_Walk\_Audits\2020\Hortonville\_School\_District\Greenville2020.aprx  
Source: Esri, Maxar, GeoEye, Earthstar Geographics, CNES/Airbus DS, USDA, USGS, AeroGRID, IGN, and the GIS User Community