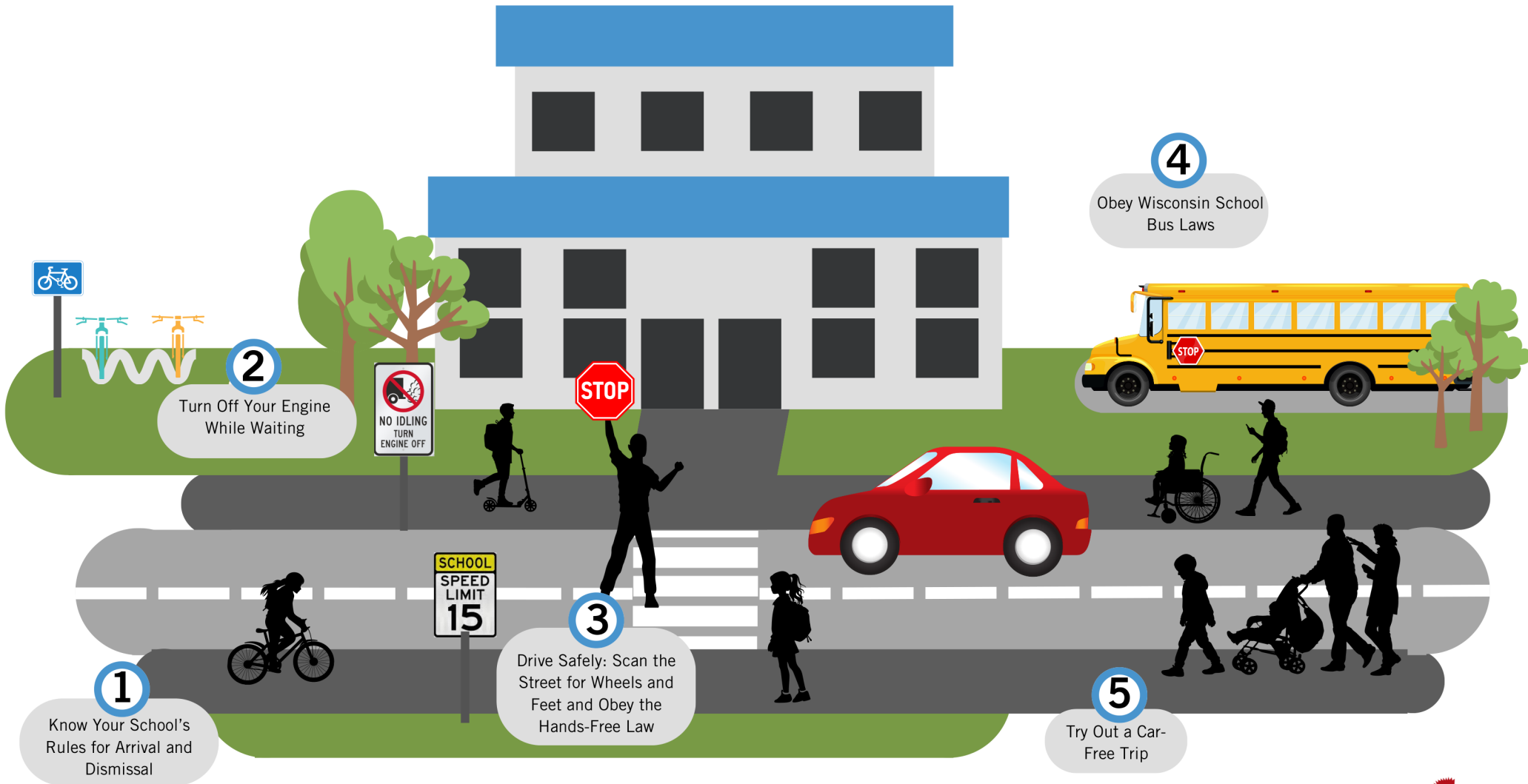


# Navigating School Zone Driving

All students deserve to get to and from school safely. It is vital for everyone to take extra care when they enter and exit the school campus. Here are simple guidelines to help you understand the basics.



## 1 Know Your School's Rules for Arrival and Dismissal

Before the school year starts, always review your school's arrival and dismissal procedure.



### TIP:

Share these procedures with any caregivers, family, and friends who may pickup or drop off your child.

#### Drop-Off and Pick-Up Checklist

- ✓ Drive at a walking pace
- ✓ Follow crossing guard instructions
- ✓ Ensure you are at the correct location for pick up and drop off

## 2 Turn Off Your Engine While Waiting

Running your car while not in motion (idling) for more than 10 seconds wastes fuel and produces emissions that contribute to poor air quality. Your child's lungs are still developing and are more sensitive to exhaust particulate pollution.

1. Turn off your car when you're waiting in the pick-up and drop-off area.
2. It is more fuel-efficient to simply restart your car when you are ready to move.



## 3 Drive Safely: Scan the Street for Wheels and Feet and Obey the Hands-Free Law

Pedestrians and cyclists are the most vulnerable roadway users. When driving, slow down make eye contact, and give them priority.

Wisconsin law prohibits operators of motor vehicles from using any electronic device, including mobile telephones, unless the device is used in a hands-free mode.

The "hands-free" law is effective as of October 1, 2016.



## 4 Obey Wisconsin School Bus Laws

If a school bus or van has its lights flashing and a stop sign extended, you must stop. This applies to vehicles traveling in the opposite direction on multi-lane roads. Remain stopped until the lights stop flashing or the stop sign folds back. Then move slowly and continue to look for children.

Failure to stop can be fined between \$30 and \$300. Four (4) points assessed against the driving record.



### SCHOOL BUS LAW

Must stop at least 20 feet away from a school bus. Cannot proceed until the bus resumes motion or the visual signals are no longer actuated.

## 5 Try Out A Car-Free Trip

You are not IN traffic you ARE traffic. Try a car-free trip to reduce congestion during pickup and drop off. If your home is within a close range (1/2 to one mile) of the school, opt for an active way of getting to school by walking or biking.

Consider these options with other families at your school.

- Start a Walking School Bus or a Bike Trian.
- Coordinate a Park and Walk location with the school to reduce the amount of traffic on school grounds.
- If you must drive, try carpooling.